

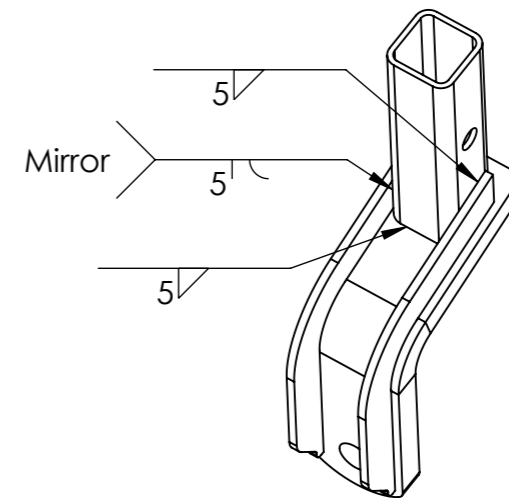
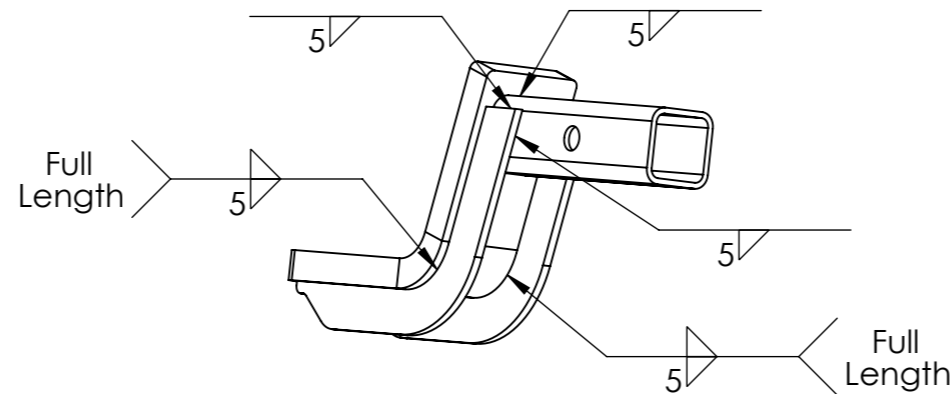
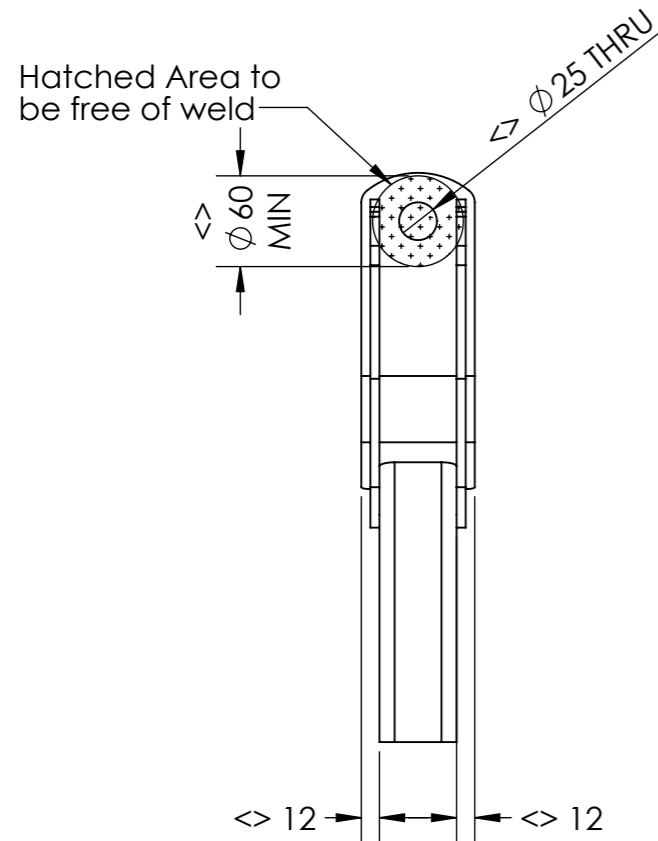
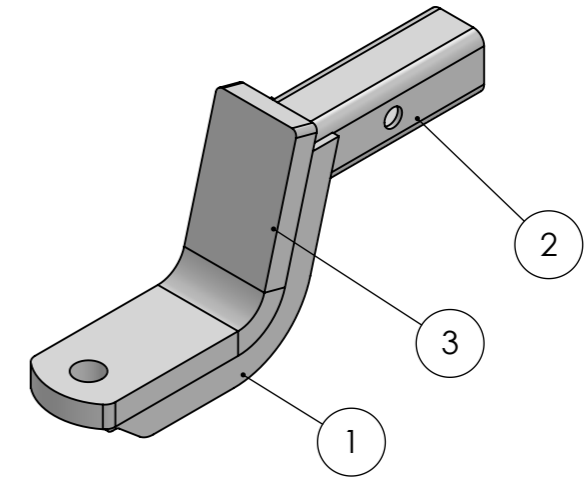
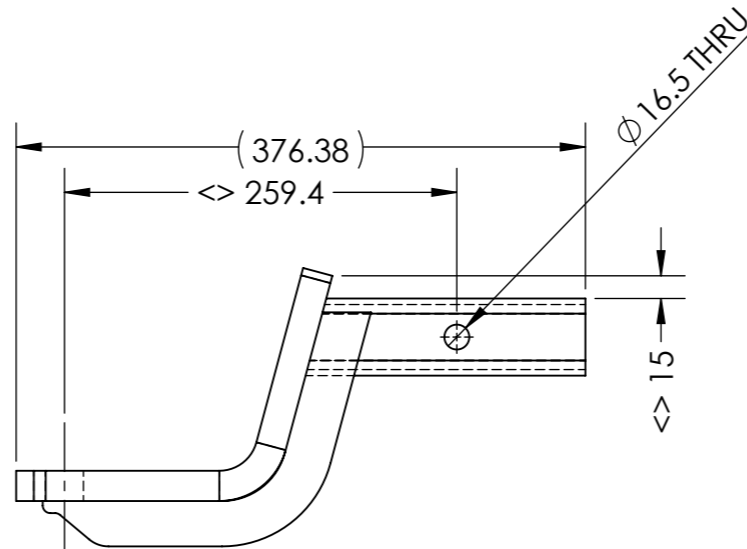
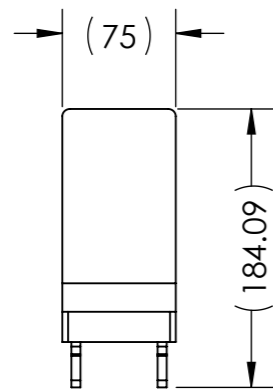
**GENERAL NOTES:**

- Parts that look to be flush/coincident are to be flush/coincident U.N.O
- Total runout between parallel edges to be  $\pm 2\text{mm}$
- $\langle \rangle$  = Significant Characteristic

**WELD NOTES:**

- Any area of the assembly without weld detail is to be free of all weld material
- Welding Material: EN ISO 14341-A : G 38 3 C1 3Si1 OR G 42 4 M21 3Si
- Welding Process: MAG
- Welding Standard: AS/NZS ISO 3834
- Welding Tolerance: +/- 2mm

ItemNo.	PartNo.	Rev	Description	QTY.	Mass	Thickness	Length	Process
1	L4271	00	L4271 Stiffener Plate	2	0.41 kg	6		Cut
2	L4271-01	00	L4271 Shank	1	0.96 kg	4.00	185.00	Cut, Punch, Linish, Die Grind
3	L4271-03	00	L4271 Tongue	1	3.48 kg	20.00	300.00	Cut, Punch, Linish, Bend



					DESIGNED BY:	UNLESS OTHERWISE STATED ALL DIMENSIONS ARE IN MILLIMETRES WITH THE FOLLOWING TOLERANCES: LINEAR TO 100: $\pm 1$ LINEAR 100 TO 500: $\pm 3$ LINEAR OVER 500: $\pm 5$ ALL HOLES AND SLOTS: $\pm 0.2$ ALL ANGLES: $\pm 1^\circ$			STATUS:			<b>TAG</b>	DESCRIPTION: Powder Coated Ball Mount					
					DRN BY: Tyson Morris				LOAD RATING:				This drawing is the property of TAG Towbars & Towing Accessories <a href="https://www.tagtowbars.com.au/">https://www.tagtowbars.com.au/</a> Phone: 07 3208 3022					
					CKD BY: JM				DRAFTING STANDARD AS 1100		SCALE	SHEET	SIZE	IF IN DOUBT ASK DO NOT SCALE	DRAWING NUMBER:	PROJECT NUMBER:	REV:	
					MATERIAL:						1:5	1 of 1	A3		L4271			00
					THICKNESS (mm):													
REV	DESCRIPTION	DATE	ECR No.	APPR.	WEIGHT (kg):													
					FINISH:													