

# Fitting Instructions



SKU

**T7P730**

PRODUCT

**TAG Heavy Duty Towbar to suit Jeep Grand Cherokee (10/2010 - on)**



Scan for latest version of these instructions

## SPECIFICATIONS

- Towbar Class: Heavy Duty
- Towing Capacity: 3500kg

## IN THIS GUIDE

- Fitment Instructions
- Torque Settings
- Warranty Info

# Towbar Fitting Instructions



## Step-By-Step Instructions

### Warning:

- This product is for towing purposes only and must only be loaded as shown in your vehicle Owner's Manual.
- This towbar is NOT to be drilled, cut, welded, or modified in any way.
- Check behind chassis rail and body panels before drilling to ensure no hazards are present
- All load ratings shown are under the assumption your trailer has a functional braking system installed
- When installed in positions other than the one depicted in these instructions the Tow Ball Mount may interfere or obstruct certain features of your vehicle (tailgate opening, Chassis clearance, etc.)

### General:

- Before fitting this towbar read fitting instructions and check installation hardware is correct.
- Check that the towbar is suitable for the vehicle and be wary of any changes to the vehicle design that may conflict with the fitting of this towbar. (Tray, Canopy, Suspension etc.)
- After drilling, blow any filings clear, remove any swarf and treat exposed metal with a rust inhibitor.
- The high tensile fasteners supplied with this product are an integral feature to achieving the specified rating, if replacement is required ensure that fasteners of the same grade (8.8) & quality are used. Contact an authorised TAG distributor or the TAG fitment centre - (07) 3208 3022 - if further information is required.

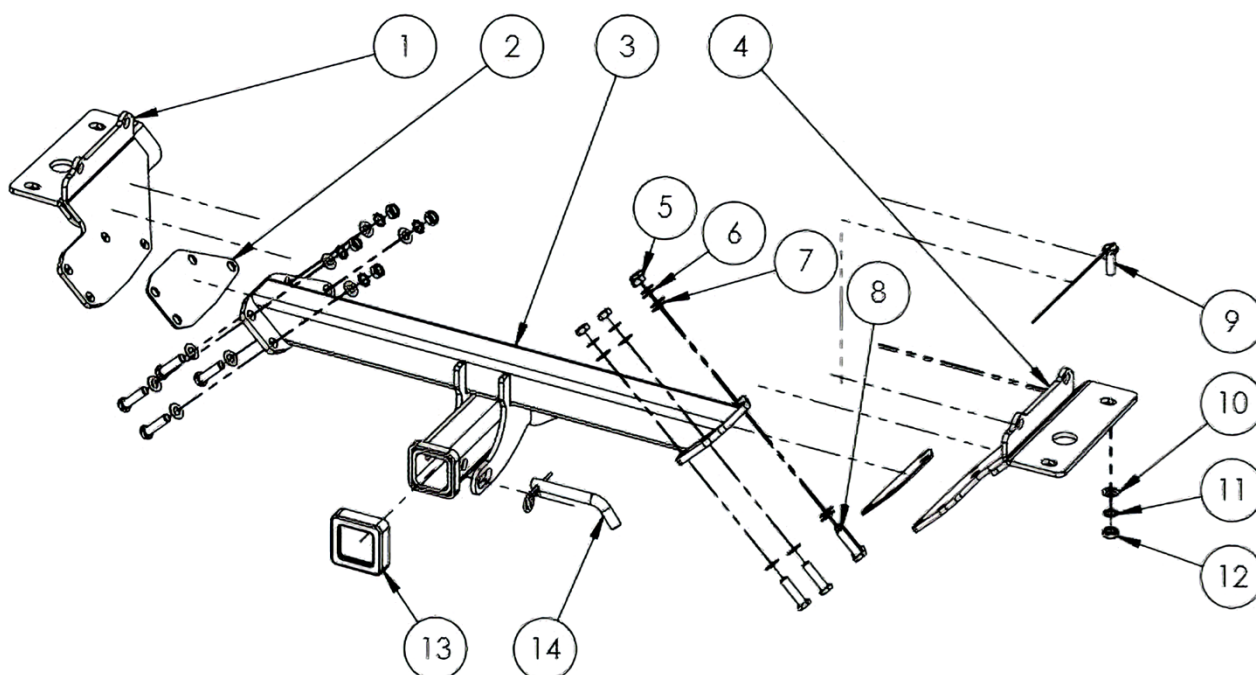
### Towbar Maintenance and Care:

It is recommended, when not in use, the Tow Ball Mount assembly and class 4 Pin and Clip is stored inside the car away from moisture to prevent standing water from forming rust. Inspect to ensure, on regular basis, fasteners are torqued to the specifications below and in good condition.

**Ensure that the fitting instructions are read and understood prior to fitment**

**Place these instructions in the vehicle's glovebox after installation is completed**

# Towbar Fitting Instructions

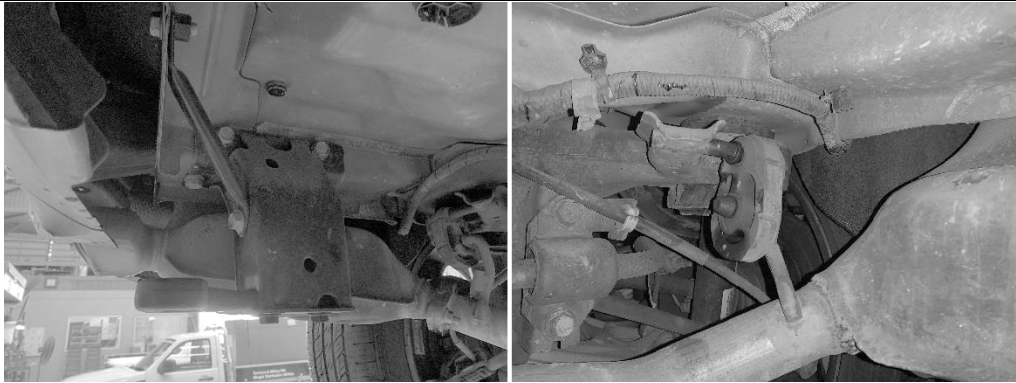


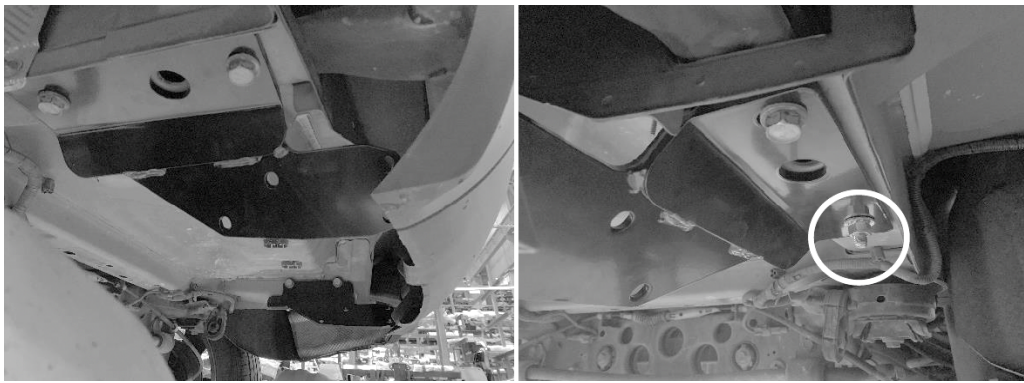
**Tools Required:** Spanners, Sockets, Torque Wrench

Kit Contents					
Item No.	Description	Qty	Item No.	Description	Qty
1.	End Plate PS	1	9.	½" UNC Bolt on Wire	1
2.	Spacer 3mm	2	10.	½" Flat Washer	1
3.	Main Bar Subassembly	1	11.	½" Shake Proof Washer	1
4.	End Plate DS	1	12.	½" UNC Nut	1
5.	M12x1.25 Nut	8	13.	Hitch Collar Cover	1
6.	M12 Shake Proof Washer	8	14.	Pin & Clip	1
7.	M12 Flat Washer	16	...	D-Shackles	2
8.	M12x1.25x45 Bolt	8	...	Compliance Sticker	1

# Towbar Fitting Instructions

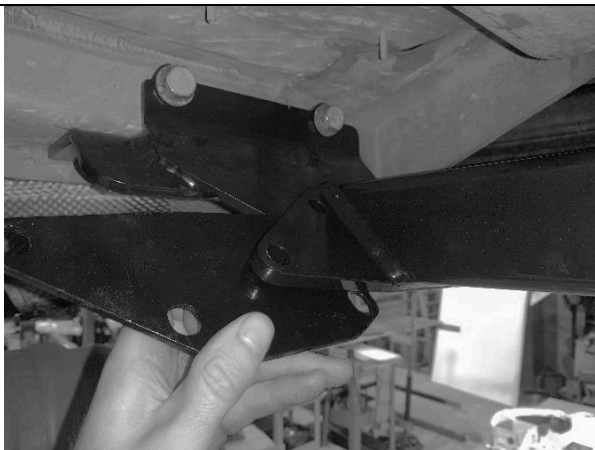


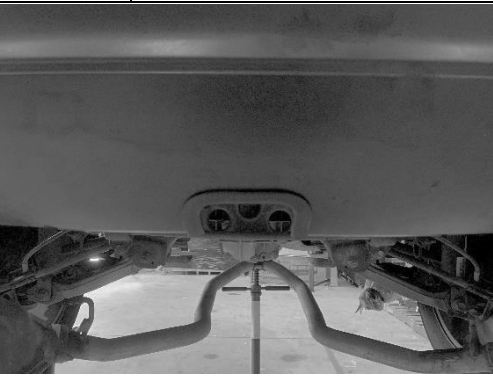
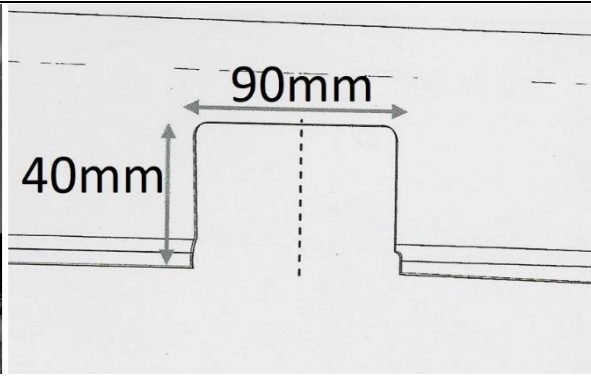
Step 1	Drop Exhaust & Remove Shipping Hook	
		
Instructions	Tools	Fasteners/Torques
<p>Support the centre of the exhaust near the differential. Disconnect the 2 rearmost exhaust hangers on each side of the vehicles and allow the rear section of the exhaust to hang lower, giving space to access towbar mounting points.</p> <p>Remove the shipping hook from the passenger side of the vehicle as well as the corresponding bolts on the other side. Retain all bolts to use for fitting the towbar end plates in the next step. Shipping hook can be discarded.</p>	Spanners, Sockets	N/A

Step 2	Fit Towbar End Plates & Drill Extra Hole	
		
Instructions	Tools	Fasteners/Torques
<ol style="list-style-type: none"> <li>Loosely secure both towbar end plates to the chassis. <ul style="list-style-type: none"> <li>Using Bolts removed in the previous step into the captive nuts in the side of each chassis rail (4 on the passenger side, 3 on the driver's side)</li> <li>Drill the remain foremost hole in the bottom of the driver's side chassis rail. Then feed the 1/2" bolt on wire, up through the hole in the chassis, fixing through the drilled hole with 1/2" nut, flat and shake proof washers.</li> </ul> </li> <li>Tighten the bolts to hold the end plates against the chassis rails. <b>DO NOT tighten to torque spec.</b></li> </ol>	Spanners, Sockets	N/A

# Towbar Fitting Instructions




Step 3	Determine if Spacers are Required	
		
Instructions	Tools	Fasteners/Torques
<p>Position the Towbar centre section between the two end plates.</p> <p>If there is more than approx. 3mm clearance between the parts on each side, then spacers will be required.</p> <p>If the clearance is less than this, spacers will not be required between the parts.</p>	NA	NA

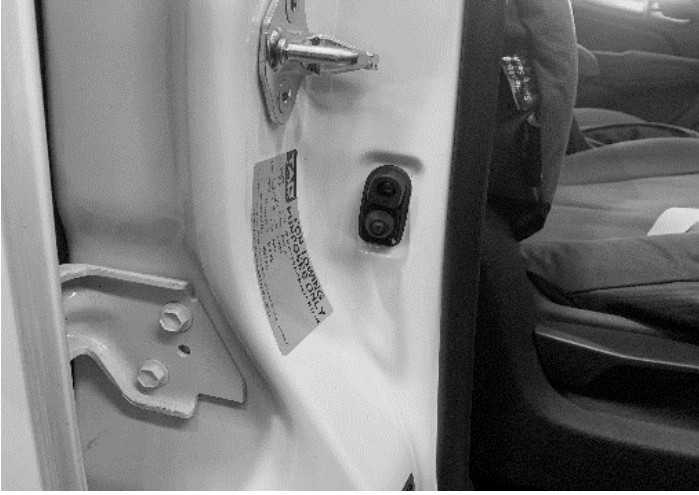
Step 4	Perform Bumper Cut	
		
Instructions	Tools	Fasteners/Torques
<p>Carefully perform bumper cut as indicated in the diagram above. Please note this is only an indication, bumpers can vary between models and the fitter should take their own measurements.</p>	Air Saw	NA



# Towbar Fitting Instructions



Step 5	Secure Towbar Centre Section		
			
Instructions	Tools	Fasteners/Torques	
<p>Secure Towbar Centre section to the end plates:</p> <ul style="list-style-type: none"> <li>- Using 4x M12x45 Bolts, Nuts &amp; Shake Proof Washers, 8x M12 Flat Washers, and 1x Spacer (if required) per side.</li> </ul> <p>When all hardware is in place, tighten all bolts (including those into the chassis rails) to the torque specified.</p> <p>Reattach the exhaust hangers as removed in step 1.</p>	<p>Spanner, Sockets, Torque Wrench</p>	<p>M12 = 100Nm ½" = 100Nm</p>	

Step 6	Apply Sticker to Door Jamb		
			
Instructions	Tools	Fasteners/Torques	
<p>Apply Towbar info label to the inside of the driver's side door Jamb.</p>	<p>N/A</p>	<p>N/A</p>	

# Towbar Fitting Instructions



## Torque table for bolt tightening

<b>Metric GRADE 8.8</b>	<b>UNC GRADE 8</b>
M6 – 12.5 Nm	3/8 – 50 Nm
M8 – 30 Nm	1/2 – 125 Nm
M10 – 60 Nm	5/8 – 245 Nm
M12 – 103 Nm	
M14 – 167 Nm	
M16 – 270 Nm	

## TAG Warranty Statement

SWD warrants your TAG Towbar for its full product life under the following conditions:

- You can show proof of purchase.
- The towbar has been correctly installed by a suitably qualified installer.
- The towbar has not been modified or abused in any way and has only been used for the purpose intended.
- The towbar was not fitted second hand to your vehicle.

The extent of this warranty includes materials and workmanship used in the manufacture of the towbar and is to the equivalent value of current, full replacement cost.

Nothing stated or implied in this warranty limits in any way, the statutory rights that you may have.

To make a claim visit the original installer in the first instance or, if you are unable to or are not satisfied with their help, then contact us direct by phone on 1300 669122 or visit [www.swd.com.au](http://www.swd.com.au)