

Fitting Instructions



SKU

T2T578

PRODUCT

**TAG Standard Duty Towbar for
Toyota Tarago (01/2006-10/2019)**

SPECIFICATIONS

- Towbar Class: CL 2 Light Duty
- Towing Capacity: 1200kg
- Tow ball Weight: 120kg
- Approx. Fitment Time: 90 Minutes



Scan for latest
version of these
instructions

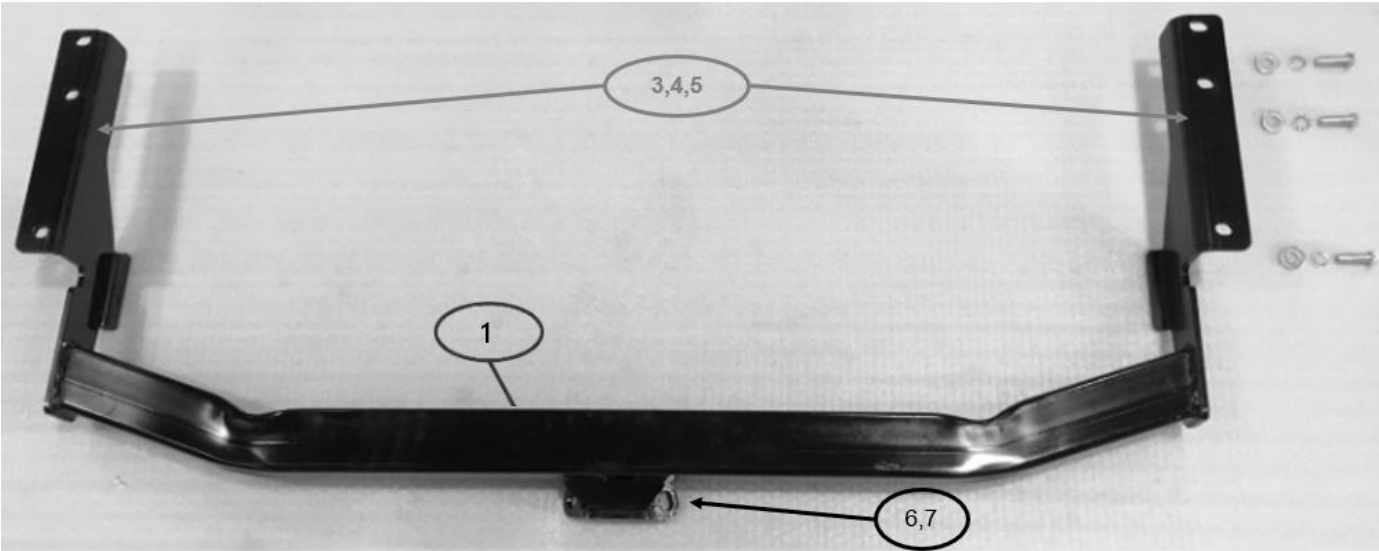
TOOLS REQUIRED

- Spanners
- Sockets
- Air Saw or similar.
- Trim Removal Tool
- Torque Wrench

IN THIS GUIDE

- Fitment Instructions
- Torque Settings
- Warranty Info

Towbar Assembly



ITEM NO.	DESCRIPTION	QTY.	ITEM NO.	DESCRIPTION	QTY.
1	Towbar – T2T578	1	5	M12 Flat Washer	6
NOT SHOWN	Ball Mount – L264	1	6	M16 x 2 x 40 Bolt	2
3	M12 x 1.25 x 35 Bolt	6	7	M16 Spring washer	2
4	M12 Shake proof washer	6			

Important Information



Warning:

- This product is for towing purposes only and must only be loaded as shown in your vehicle Owner's Manual.
- This towbar is NOT to be drilled, cut, welded, or modified in any way.
- Check behind chassis rail and body panels before drilling to ensure no hazards are present.
- All load ratings shown are under the assumption your trailer has a functional braking system installed.
- When installed in positions other than the one depicted in these instructions the Tow Ball Mount may interfere or obstruct certain features of your vehicle (tailgate opening, Chassis clearance, etc.)

General:

- Before fitting this towbar read fitting instructions and check installation hardware is correct.
- Check that the towbar is suitable for the vehicle and be wary of any changes to the vehicle design that may conflict with the fitting of this towbar. (Tray, Canopy, Suspension etc.)
- After drilling, blow any filings clear, remove any burrs and treat exposed metal with a rust inhibitor.
- The high tensile fasteners supplied with this product are an integral feature to achieving the specified rating, if replacement is required ensure that fasteners of the same grade (8.8) & quality are used. Contact an authorised TAG distributor or the TAG fitment center - (07) 3208 3022 - if further information is required.

Towbar Maintenance and Care:

It is recommended, when not in use, the Tow Ball Mount assembly and class 4 Pin and Clip is stored inside the car away from moisture to prevent standing water from forming rust. Inspect to ensure, on regular basis, fasteners are torqued to the specifications below and in good condition.

Ensure that the fitting instructions are read and understood prior to fitment, Following the fitment place these instructions in the vehicle's glovebox after installation is completed.

<i>Metric Bolt Torque Settings</i>										
Diameter	Pitch	Grade	Torque	Unit		Diameter	Pitch	Grade	Torque	Unit
M8	1.25	8.8	29	Nm		M12	1.25	10.9	125	Nm
M10	1.25	8.8	57	Nm		M12	1.50	10.9	105	Nm
M10	1.50	8.8	44	Nm		M14	1.25	10.9	195	Nm
M12	1.25	8.8	101	Nm		M14	1.50	10.9	165	Nm
M12	1.50	8.8	97	Nm		M16	1.25	10.9	295	Nm
M12	1.75	8.8	77	Nm		M16	1.50	10.9	250	Nm
M14	2.00	8.8	122	Nm		50mm Tow Ball	N/A	N/A	300	Nm
M16	2.00	8.8	190	Nm		70mm Tow Ball	N/A	N/A	750	Nm

Installation Instructions



Step 1: Remove Rear Bumper

- a. Remove the screw in each wheel arch.
- b. Lift the tailgate and remove the bolt from each side fastening the bumper to the body.
- c. Remove 5x scrivenets along the bottom side of the bumper.
- d. Beginning at each wheel arch carefully release bumper from the body clips and pull rearward to release.

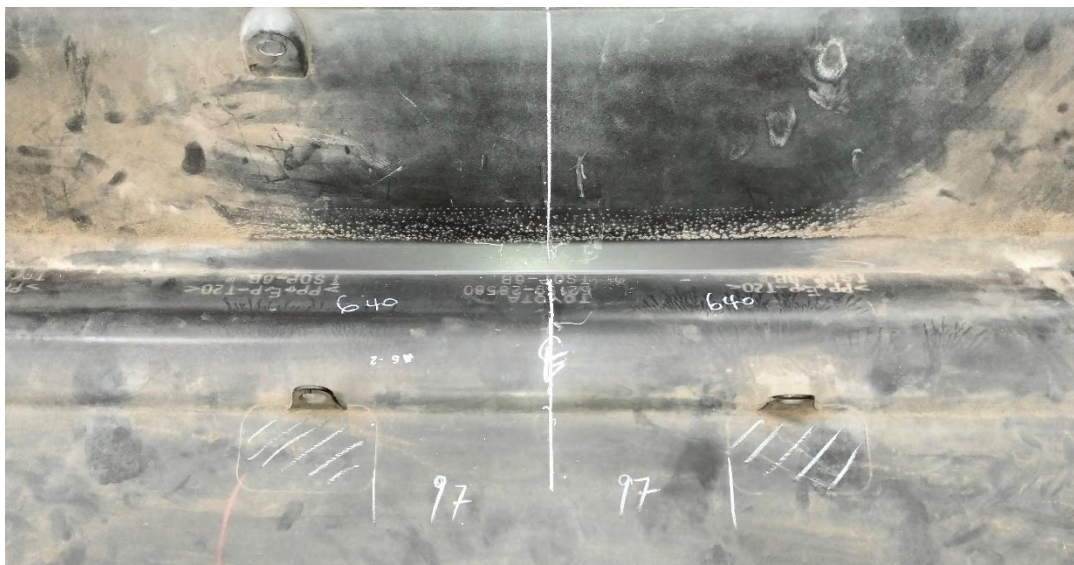
Step 2: Fit Towbar

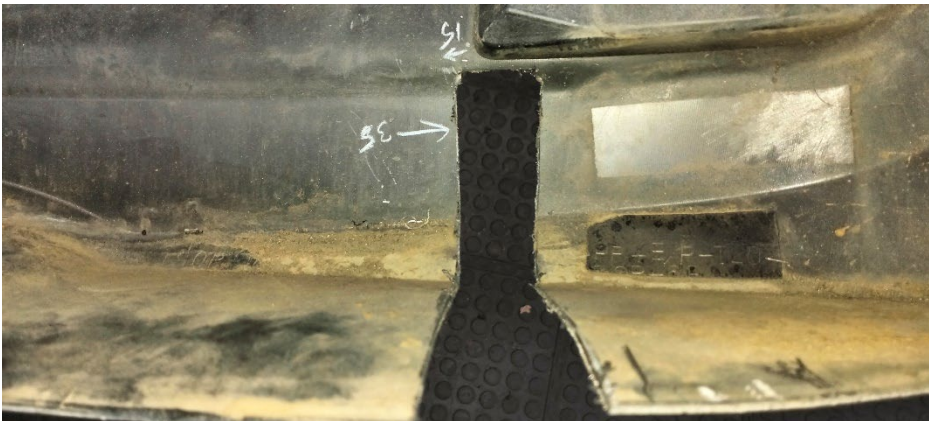
- a. Lift towbar up to the chassis and loosely fasten all bolts with washers and spring washers.
- b. Tighten all bolts to the torque specification on page 2.

Step 3: Cut Bumper

Note: The towbar installer is ultimately responsible for the location & quality of the bumper cut. To avoid mistakes, please use the following measurements as a guide only. We suggest making small incremental cuts and regularly test fit the bumper to ensure an accurate and tidy appearance. The additional application of rubber pinch-weld around the cut edge ensures a neat & tidy look.

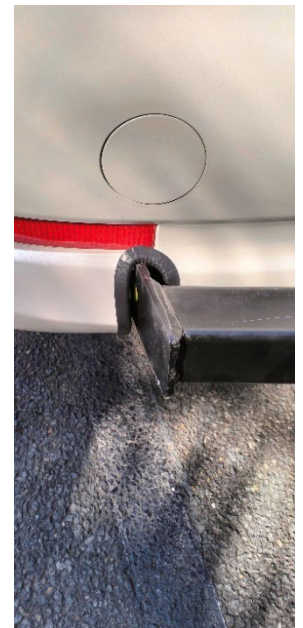
- a. Measure & mark the centre of the bumper using the inner edge of the two middle rectangular molding features (**approx. 97mm**).
- b. Measure & mark the centre of the bumper further down by halving the distance between the inside edge of each reflector housing. Create the centre line between these two marks & all the way to the lowest edge of the bumper.
- c. Mark the bumper 640mm out from the centre line of each side. This line will be approx. 15mm toward the centre from the inner most edge of the reflector housing.
- d. Mark another line 35mm (**675mm from centre**) toward the outside of the bumper.
- e. For the top of the cut-out, mark a line approximately 5mm below & parallel to the reflector housing.
- f. The cut-out should be wide enough to add pinch-weld for a tidy finish.
- g. Using a suitable device, carefully cut the bumper.
- h. Apply rubber pinch-weld to the cut-outs.
- i. Reinstall bumper in reverse of steps 1a-d.
- j. Some force may be required to insert the inner section of the bumper between the fitted bar and the body of the vehicle.





Step 4: Complete Towbar & Apply Spare Compliance Label

- Attach TAG Hitch cover with rubber mallet carefully to prevent breaking.
- Attach Tow ball to Ball Mount and slide hitch into towbar and secure with Pin and Clip if you are going to tow straight away, alternatively secure Ball Mount in a safe place inside your car.
- Apply one of the compliance labels to the pillar of the driver's door. Leave the remaining label and the fitting instructions in the vehicle handbook.



TAG Warranty Statement



SWD warrants your TAG Towbar for its full product life under the following conditions:

- You can show proof of purchase.
- The towbar has been correctly installed by a suitably qualified installer.
- The towbar has not been modified or abused in any way and has only been used for the purpose intended.
- The towbar was not fitted second hand to your vehicle.

The extent of this warranty includes materials and workmanship used in the manufacture of the towbar and is to the equivalent value of current, full replacement cost.

Nothing stated or implied in this warranty limits in any way, the statutory rights that you may have.

To make a claim visit the original installer in the first instance or, if you are unable to or are not satisfied with their help, then contact us direct by phone on 1300 669122 or visit www.swd.com.au.