

Fitting Instructions



SKU

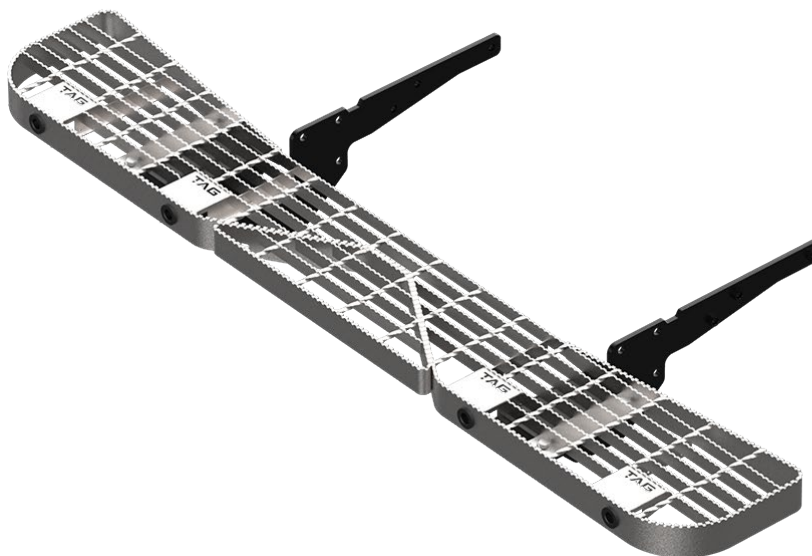
TSP746

PRODUCT

**TAG Rear Step for Volkswagen
Transporter (03/2010 - on)**

SPECIFICATIONS

- Towbar Class: CL 4 Heavy Duty
- Approx. Fitment Time: 90 Minutes



Scan for latest
version of these
instructions

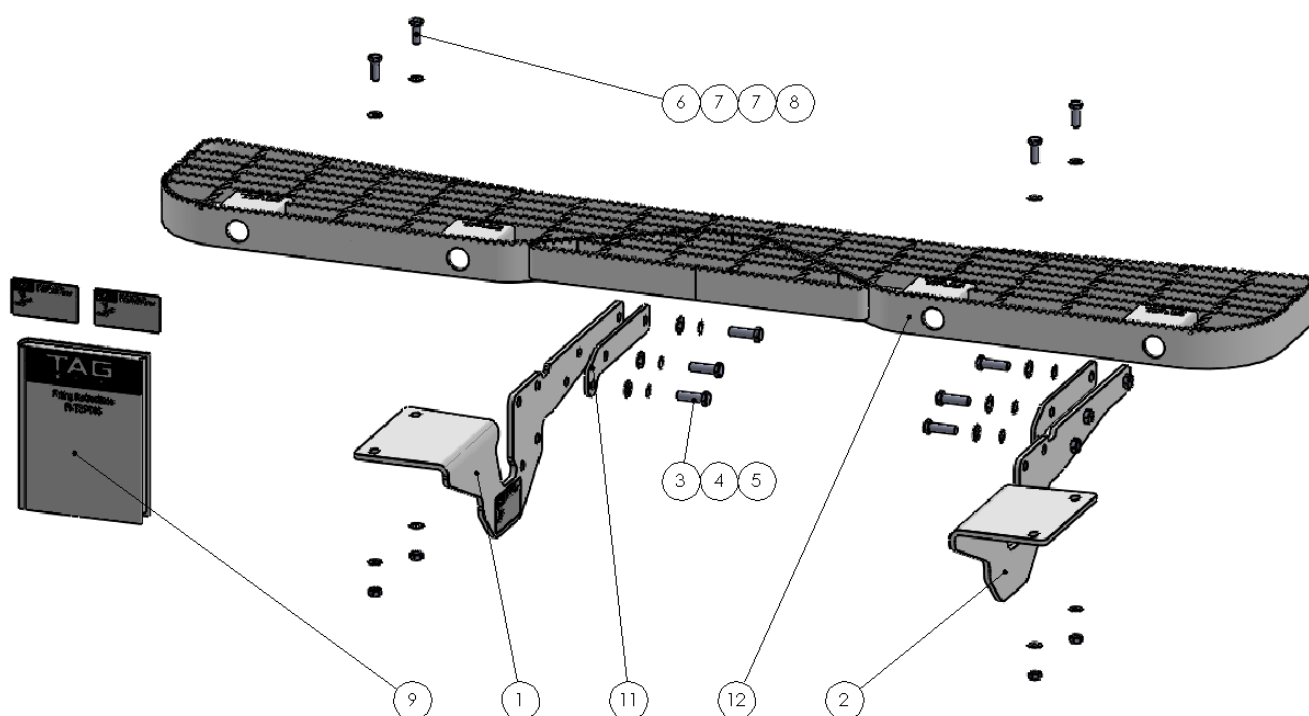
TOOLS REQUIRED

- Spanners
- Sockets
- Air Saw or similar.
- Trim Removal Tool
- Torque Wrench

IN THIS GUIDE

- Fitment Instructions
- Torque Settings
- Warranty Info

Towbar Assembly



ITEM NO.	DESCRIPTION	QTY	ITEM NO.	DESCRIPTION	QTY
1	Welded End Plate Assembly	1	7	M10 Flat Washer	8
2	Welded End Plate Assembly DS	1	8	M10 X 1.25 Nut	4
3	M12 x 1.75 x 40 Set Screw	6	9	Fitting Instruction	1
4	M12 Shakeproof Washer	6	10	TAG Compliance Sticker	3
5	M12 Flat Washer	6	11	Fixing Plate	2
6	M10X30 1.25 Bolt	4	12	TAG Non Tow Step Assembly	1

Important Information



Warning:

- This product is for towing purposes only and must only be loaded as shown in your vehicle Owner's Manual.
- This towbar is NOT to be drilled, cut, welded, or modified in any way.
- Check behind chassis rail and body panels before drilling to ensure no hazards are present.
- All load ratings shown are under the assumption your trailer has a functional braking system installed.
- When installed in positions other than the one depicted in these instructions the Tow Ball Mount may interfere or obstruct certain features of your vehicle (tailgate opening, Chassis clearance, etc.)

General:

- Before fitting this towbar read fitting instructions and check installation hardware is correct.
- Check that the towbar is suitable for the vehicle and be wary of any changes to the vehicle design that may conflict with the fitting of this towbar. (Tray, Canopy, Suspension etc.)
- After drilling, blow any filings clear, remove any burrs and treat exposed metal with a rust inhibitor.
- The high tensile fasteners supplied with this product are an integral feature to achieving the specified rating, if replacement is required ensure that fasteners of the same grade (8.8) & quality are used. Contact an authorised TAG distributor or the TAG fitment center - (07) 3208 3022 - if further information is required.

Towbar Maintenance and Care:

It is recommended, when not in use, the Tow Ball Mount assembly and class 4 Pin and Clip is stored inside the car away from moisture to prevent standing water from forming rust. Inspect to ensure, on regular basis, fasteners are torqued to the specifications below and in good condition.

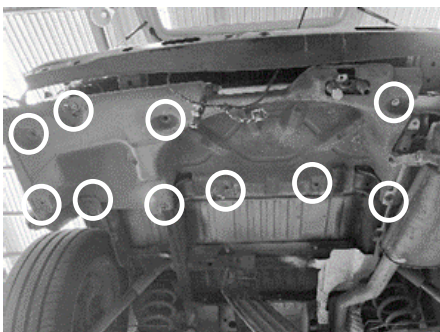
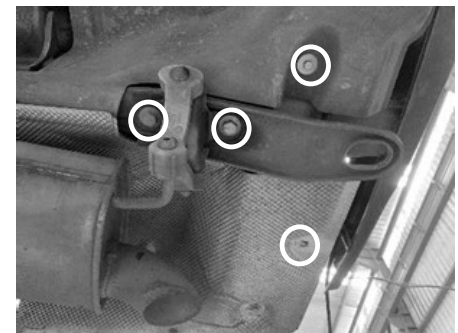
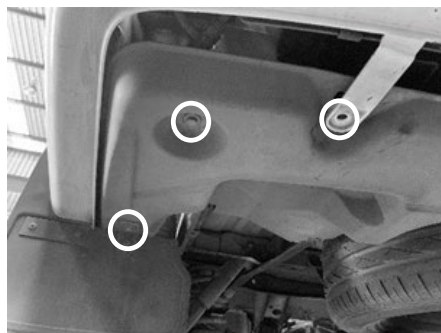
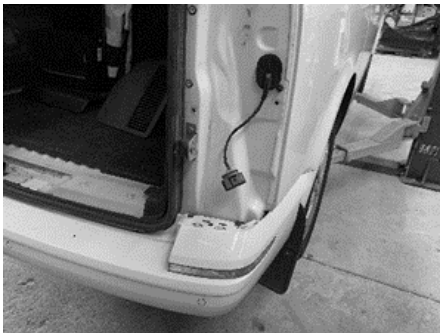
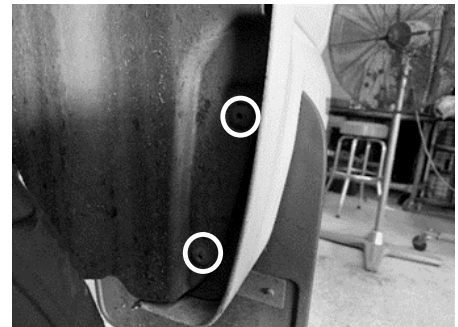
Ensure that the fitting instructions are read and understood prior to fitment, Following the fitment place these instructions in the vehicle's glovebox after installation is completed.

Metric Bolt Torque Settings

Diameter	Pitch	Grade	Torque	Unit		Diameter	Pitch	Grade	Torque	Unit
M8	1.25	8.8	29	Nm		M12	1.25	10.9	125	Nm
M10	1.25	8.8	57	Nm		M12	1.50	10.9	105	Nm
M10	1.50	8.8	44	Nm		M14	1.25	10.9	195	Nm
M12	1.25	8.8	101	Nm		M14	1.50	10.9	165	Nm
M12	1.50	8.8	97	Nm		M16	1.25	10.9	295	Nm
M12	1.75	8.8	77	Nm		M16	1.50	10.9	250	Nm
M14	2.00	8.8	122	Nm		50mm Tow Ball	N/A	N/A	300	Nm
M16	2.00	8.8	190	Nm		70mm Tow Ball	N/A	N/A	750	Nm

Step 1: Remove Rear Bumper

- a. Open tail gate and unclip any wiring attached to the rear bumper.
- b. Remove 2x Torx screws securing each taillight, and push taillights outwards to remove.
- c. Remove 2x Push Rivets securing the bumper from behind the taillights on each side.
- d. Remove 2x Torx screws from inside the rear of each wheel arch.
- e. Underneath the vehicle remove 2x screws and 1 push rivet from each side.
- f. Carefully with 2 people remove rear bumper.
- g. Remove the spare tire:
 - h. Remove 2 bolts to remove the factory shipping hook.
 - i. Remove spare tire.
 - j. Remove 5x screws to detach spare wheel under tray, 2x heat shield clips also need to be removed.
- k. Remove impact beam by removing 4x bolts.
- l. Set aside all parts removed above for reattachment.

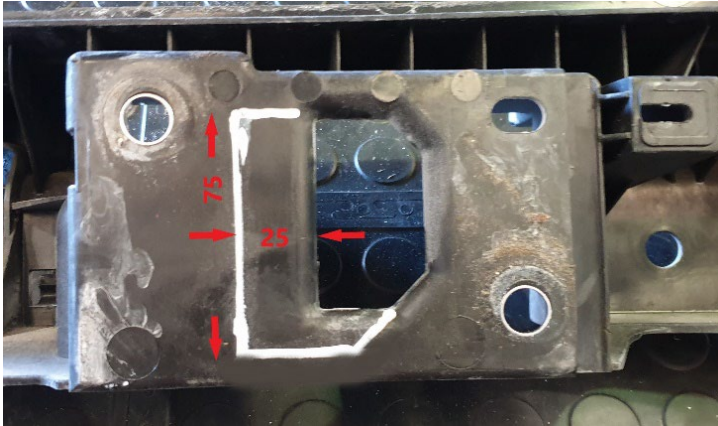


Installation Instructions



Step 2: Trim Crash Bar

- With a felt tip pen, mark the flat body mounting side of the plastic crash bar and trim. Repeat on each side.
- Refit crash bar to vehicle.



Step 3: Fit Step Mounts

- Insert endplates into chassis.
- Insert M12 bolts with washers into 6mm steel plates and loosely fasten the towbar end plates to the inside of the chassis.
- Tighten all bolts.
- Apply several layers of tape or similar on forward most edge of step mount to protect the bumper when reinstalling.



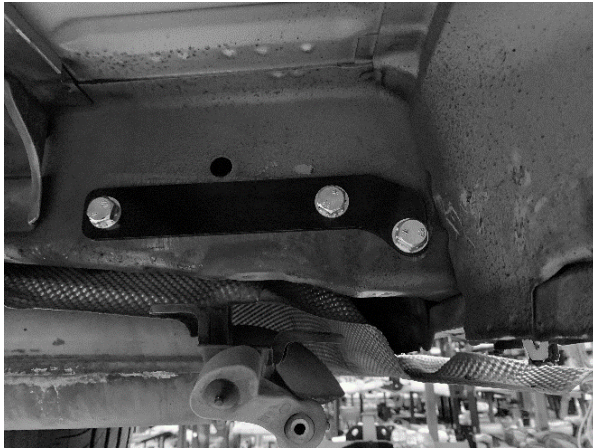
Installation Instructions



Step 4: Refit Bumper & Fit Step

Refit the rear bumper and other components removed in step 1.

Fit galvanized step onto brackets & insert M10x 30 bolts with flat washers & nuts.



Step 5: Complete Towbar & Apply Spare Compliance Label

- a. Apply one of the compliance labels to the pillar of the driver's door. Leave the remaining label and the fitting instructions in the vehicle handbook.



TAG Warranty Statement



SWD warrants your TAG Towbar for its full product life under the following conditions:

- You can show proof of purchase.
- The towbar has been correctly installed by a suitably qualified installer.
- The towbar has not been modified or abused in any way and has only been used for the purpose intended.
- The towbar was not fitted second hand to your vehicle.

The extent of this warranty includes materials and workmanship used in the manufacture of the towbar and is to the equivalent value of current, full replacement cost.

Nothing stated or implied in this warranty limits in any way, the statutory rights that you may have.

To make a claim visit the original installer in the first instance or, if you are unable to or are not satisfied with their help, then contact us direct by phone on 1300 669122 or visit www.swd.com.au.

Fitting Instructions



SKU

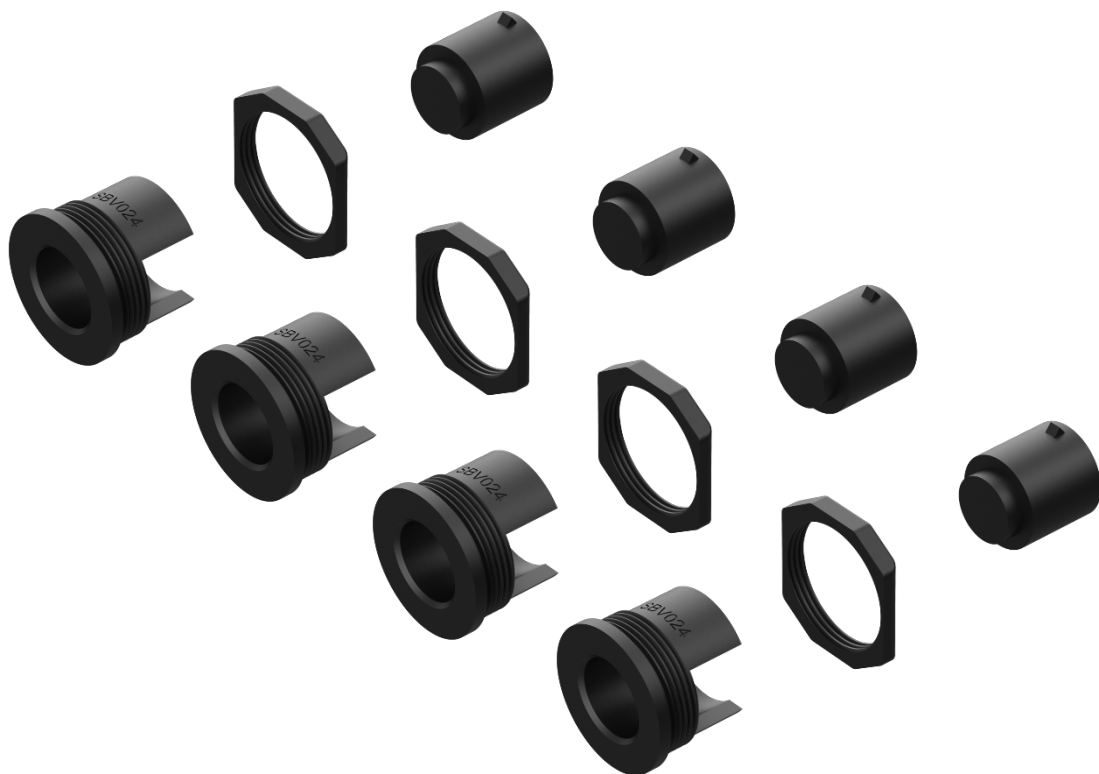
RSM024

PRODUCT

Reverse Sensor Mounting Kit

SPECIFICATIONS

- Approx. Fitment Time: 45 Minutes
- Suits: Ford Transit / Transit Custom, VW Transporter T6 / Crafter, Mercedes Sprinter / Vito, Renault Master / Trafic, Mitsubishi Express



TOOLS REQUIRED

- No Tools Required

IN THIS GUIDE

- Fitment Instructions

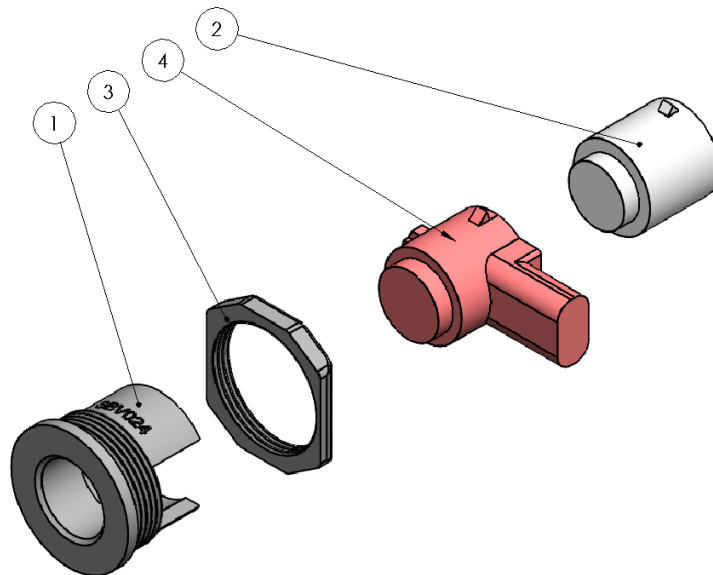
Important Information



Warning:

- This kit is designed to relocate the RPA (Reverse Park Assist) sensors from the vehicle bumper bar to the TAG galvanized step (TRS002 or TRS001).
- It is recommended that the sensor(s) be mounted to the TAG step in the exact orientation they were mounted in the OEM bumper.
- The installation of this kit may require the OEM sensor harness to be elongated to reach the new sensor location. Should the harness(s) need elongation it is suggested that new connections be made by stripping the wires attaching the extension wires by solder.
- The bumper plugs provided are to fill the hole in the OEM bumper where the sensor was removed.
- Contact an authorised TAG distributor or the TAG fitment center - (07) 3208 3022 - if further information is required.

ITEM NO.	DESCRIPTION	QTY.
1	Sensor Collar	4
2	Blanking Plug for Bumper	4
3	Collar Nut	4
4	Reverse Sensor (Not Included)	



Reverse Sensor Mount Instruction.

1. Insert sensor collar into hole of TAG step Fasten the collar with the collar nut against the inside face of the step.
2. Insert the sensor into the collar until an audible click is heard.
3. Adjust the orientation of the sensor collar if necessary.
4. If possible, route the sensor harness on the adjacent cable rail and tie off with cable ties.

