

Fitting Instructions



SKU

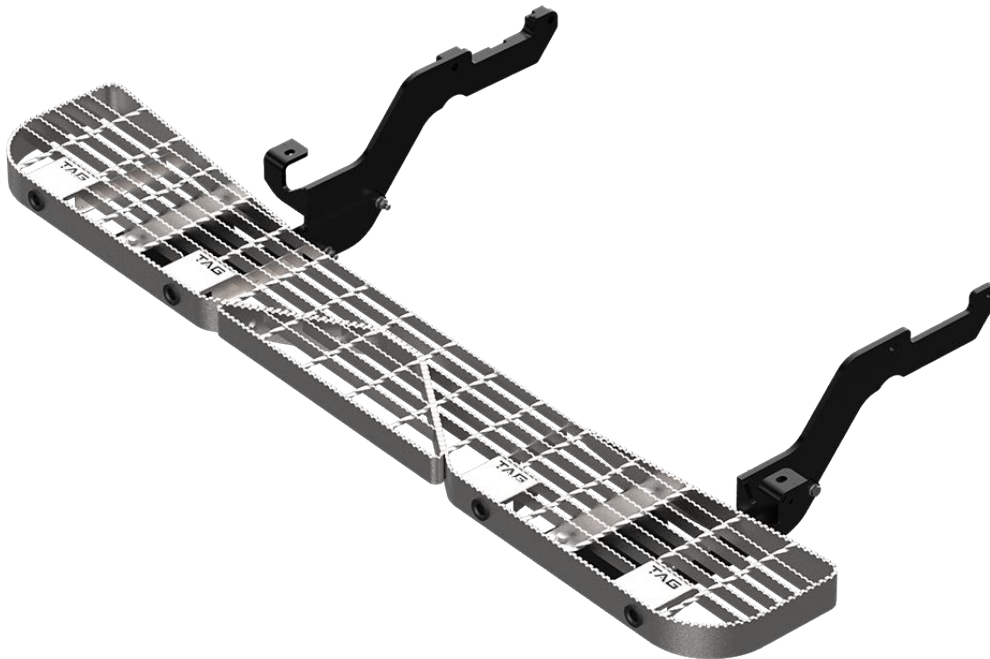
TSZ830

PRODUCT

**TAG Rear Step for Hyundai Staria
(01/2021 - on)**

SPECIFICATIONS

- Towbar Class: Rear Step
- Approx. Fitment Time: 30 Minutes



Scan for latest
version of these
instructions

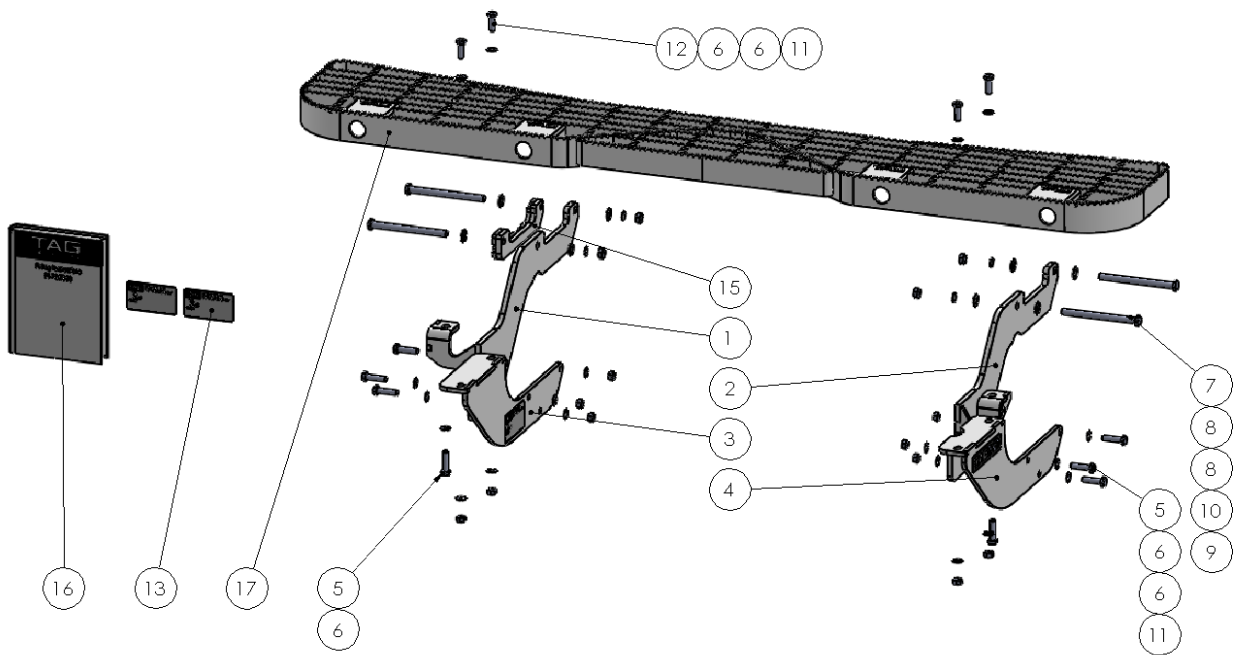
TOOLS REQUIRED

- Spanners
- Sockets
- Air Saw or similar.
- Trim Removal Tool
- Torque Wrench

IN THIS GUIDE

- Fitment Instructions
- Torque Settings
- Warranty Info

Towbar Assembly



Item No.	Description	QTY.	Item No.	Description	QTY.
1	End Plate Assembly	1	10	M12 Shakeproof Washer	4
2	End Plate Assembly DS	1	11	M10 X 1.25 Nut	10
3	Step Mount Assembly	1	12	M10 X 30 X 1.25 Bolt	4
4	Step Mount Assembly DS	1	13	TAG Compliance Sticker	3
5	M10 X 40 X 1.25 Bolt	8	14	TAG HD Sticker 150 x 33mm	1
6	M10 Flat Washer	22	15	Chassis Spacer Assembly	1
7	M12 x 1.75 x 150 Bolt	4	16	Fitting Instruction	1
8	M12 Flat Washer	8	17	TAG Non Tow Step Assembly	1
9	M12 X 1.75 Nut	4			

Important Information



Warning:

- This product is for towing purposes only and must only be loaded as shown in your vehicle Owner's Manual.
- This towbar is NOT to be drilled, cut, welded, or modified in any way.
- Check behind chassis rail and body panels before drilling to ensure no hazards are present.
- All load ratings shown are under the assumption your trailer has a functional braking system installed.
- When installed in positions other than the one depicted in these instructions the Tow Ball Mount may interfere or obstruct certain features of your vehicle (tailgate opening, Chassis clearance, etc.)

General:

- Before fitting this towbar read fitting instructions and check installation hardware is correct.
- Check that the towbar is suitable for the vehicle and be wary of any changes to the vehicle design that may conflict with the fitting of this towbar. (Tray, Canopy, Suspension etc.)
- After drilling, blow any filings clear, remove any burrs and treat exposed metal with a rust inhibitor.
- The high tensile fasteners supplied with this product are an integral feature to achieving the specified rating, if replacement is required ensure that fasteners of the same grade (8.8) & quality are used. Contact an authorised TAG distributor or the TAG fitment center - (07) 3208 3022 - if further information is required.

Towbar Maintenance and Care:

It is recommended, when not in use, the Tow Ball Mount assembly and class 4 Pin and Clip is stored inside the car away from moisture to prevent standing water from forming rust. Inspect to ensure, on regular basis, fasteners are torqued to the specifications below and in good condition.

Ensure that the fitting instructions are read and understood prior to fitment, Following the fitment place these instructions in the vehicle's glovebox after installation is completed.

Metric Bolt Torque Settings

Diameter	Pitch	Grade	Torque	Unit		Diameter	Pitch	Grade	Torque	Unit
M8	1.25	8.8	29	Nm		M12	1.25	10.9	125	Nm
M10	1.25	8.8	57	Nm		M12	1.50	10.9	105	Nm
M10	1.50	8.8	44	Nm		M14	1.25	10.9	195	Nm
M12	1.25	8.8	101	Nm		M14	1.50	10.9	165	Nm
M12	1.50	8.8	97	Nm		M16	1.25	10.9	295	Nm
M12	1.75	8.8	77	Nm		M16	1.50	10.9	250	Nm
M14	2.00	8.8	122	Nm		50mm Tow Ball	N/A	N/A	300	Nm
M16	2.00	8.8	190	Nm		70mm Tow Ball	N/A	N/A	750	Nm

Installation Instructions



Step 1: Remove Rear Bumper

Note to installer: Fitting of this step will inhibit the correct function of the reverse sensors. It is recommended that the included RSM kit be used to relocate the OEM reverse sensors onto the step & wiring extended.

The plastic bumper must be removed from the vehicle to extract/ disconnect the sensors and apply the filler plugs to existing holes.

****This instruction applies to both lift-up tail gate (TG) & barn door (BD) models.**

- a. Open door(s) and remove 4x phillips screws from each taillight assembly and gently remove rearward from body. Disconnect wiring.
- b. Remove plastic scrivets from the taillight cavity. (3per side **TG**) (2per side **BD**).
- c. Remove 1x phillips screw and 2x scrivets from inside each wheel arch.
- d. Remove 3x scrivets from behind each wheel arch attaching bumper to mud guard.
- e. Disconnect large sensor harness from inside rear LHS of bumper.
- f. Remove 2x M10 bolts (14mm socket) fastening the bumper to the chassis rail. Discard 2 bolts.



Installation Instructions



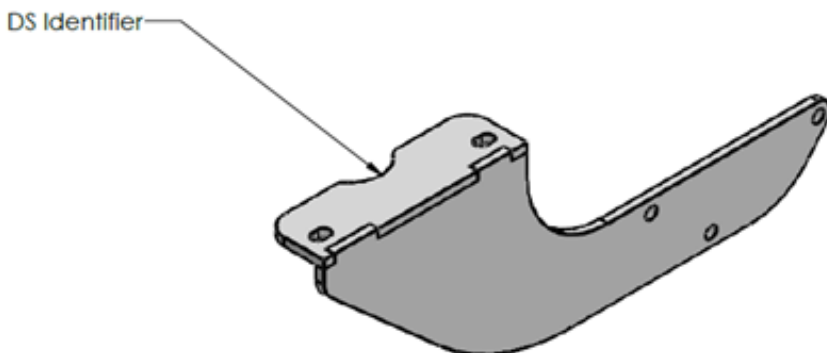
Step 1: Bumper Removal Cont'd

- g. (BD) models - to protect the paint on the bumper corner adjacent to the door hinge, apply masking tape to bumper before removal. **See picture below.**
- h. Beginning at each wheel arch, carefully peel the plastic bumper away from the body. Pull rearwards firmly below door area as bumper clips onto body.
- i. Disconnect and remove the sensors from the bumper. Insert blanking plugs into vacant holes if required.
- j. Reinstall the bumper in reverse of steps 1a-h.
- k. Note: do not re-install the rear-most M10 chassis bolts on each side.



Step 2: Fit the Endplates & Step

- a. Establish the centre of the bumper. Remove the exhaust from the rear-most hanger.
- b. Insert 2x M12x1.75x150 bolts with flat washers into the chassis holes from the outside till thread is level with inside of chassis.
- c. Lift the endplates up to the inside of the chassis & align with holes. Push bolts through.
- d. Pull bolts on PS back individually to allow the 18mm spacer to be inserted between the end plate & chassis. Loosely fasten all bolts with flat, shake proof washers & nuts.
- e. Insert M10x1.25x 40 bolts with flat washers into each end plate outrigger and loosely fasten to underside of bumper mounting bracket/ chassis. (Rear-most hole).
- f. Loosely fasten step mounting brackets to the **inside** of PS end plate & **outside** of DS end plate. ***Both step mounting bracket top plates are directed toward the PS.***
- g. ****DS step mounting bracket has identifying cut-out on top plate.**
- h. Place step onto mounting brackets & align holes. Insert M10x1.25x30 bolts with washers & loosely fasten with nuts & flat washers on the underside.
- i. Beginning at the chassis tighten all bolts to the torque specification on page 3.



Step 3: Apply Spare Compliance Label

- a. Apply one of the compliance labels to the pillar of the driver's door. Leave the remaining label and the fitting instructions in the vehicle handbook.



TAG Warranty Statement



SWD warrants your TAG Towbar for its full product life under the following conditions:

- You can show proof of purchase.
- The towbar has been correctly installed by a suitably qualified installer.
- The towbar has not been modified or abused in any way and has only been used for the purpose intended.
- The towbar was not fitted second hand to your vehicle.

The extent of this warranty includes materials and workmanship used in the manufacture of the towbar and is to the equivalent value of current, full replacement cost.

Nothing stated or implied in this warranty limits in any way, the statutory rights that you may have.

To make a claim visit the original installer in the first instance or, if you are unable to or are not satisfied with their help, then contact us direct by phone on 1300 669122 or visit www.swd.com.au.

Fitting Instructions



SKU

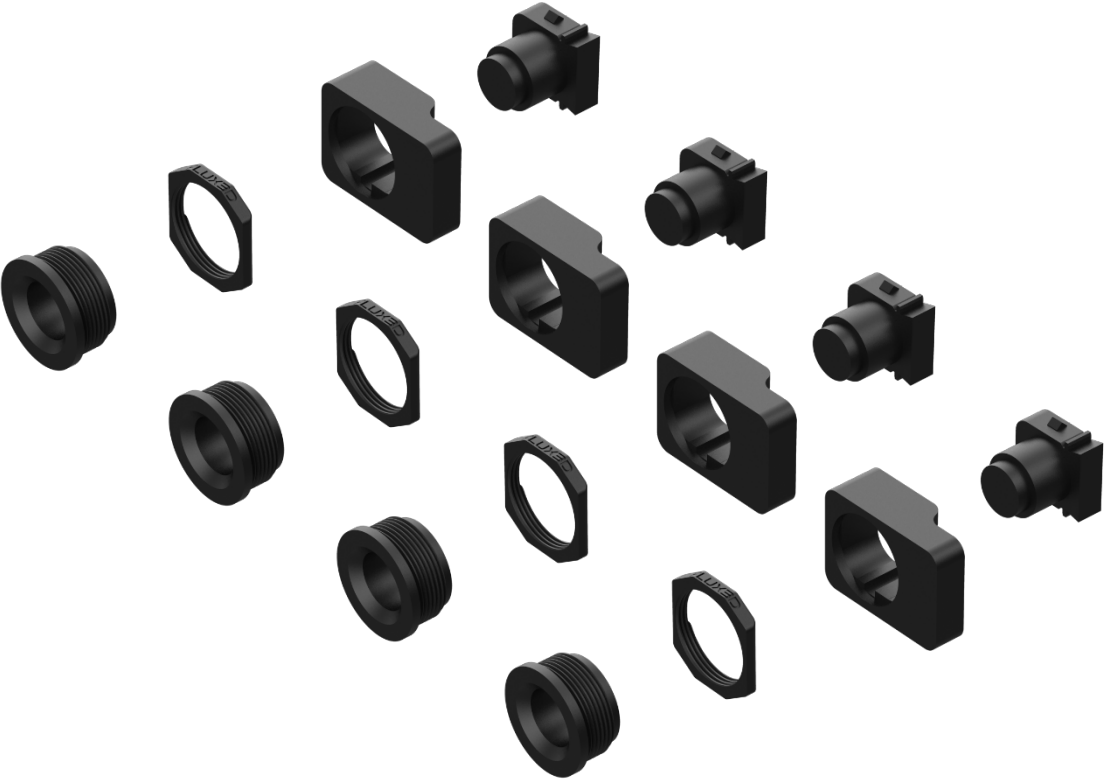
RSM029

PRODUCT

Reverse Sensor Mounting Kit

SPECIFICATIONS

- Approx. Fitment Time: 45 Minutes
- Suits: Hyundai Staria (09/2021- on)



TOOLS REQUIRED

- No Tools Required

IN THIS GUIDE

- Fitment Instructions

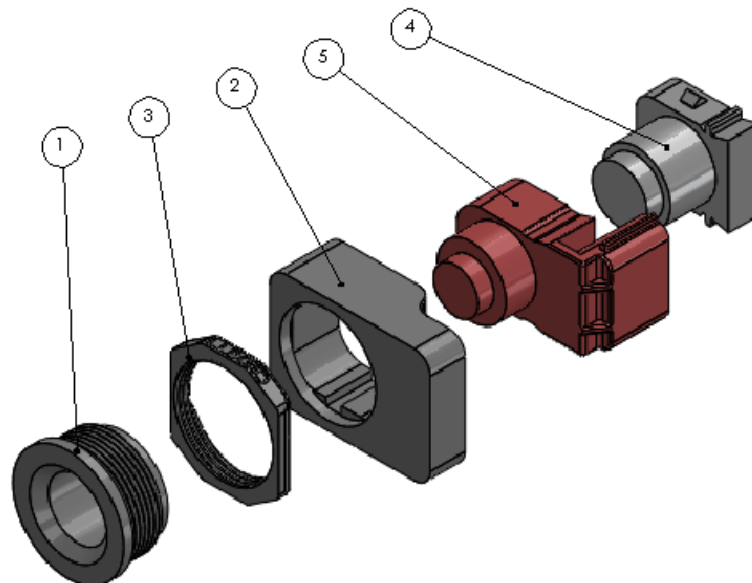
Important Information



Warning:

- This kit is designed to relocate the RPA (Reverse Park Assist) sensors from the vehicle bumper bar to the TAG galvanized step (TRS002 or TRS001).
- It is recommended that the sensor(s) be mounted to the TAG step in the exact orientation they were mounted in the OEM bumper.
- The installation of this kit may require the OEM sensor harness to be elongated to reach the new sensor location. Should the harness(s) need elongation it is suggested that new connections be made by stripping the wires attaching the extension wires by solder.
- The bumper plugs provided are to fill the hole in the OEM bumper where the sensor was removed.
- Contact an authorised TAG distributor or the TAG fitment center - (07) 3208 3022 - if further information is required.

ITEM NO.	DESCRIPTION	QTY.
1	Sensor Collar	4
2	Sensor Holder	4
3	Collar nut	4
4	Reverse Sensor Bumper Plug	4
5	Reverse Sensor (Not Included)	



Reverse Sensor Mount Instruction.

1. Insert sensor into housing and push in until you hear an audible click.
2. Insert sensor collar into sensor hole of TAG step and fasten with the collar nut.
3. Align the top of the sensor housing parallel the step and the center of the sensor collar and push together with an audible click.
4. If possible, route the sensor harness on the adjacent cable rail and tie off with cable ties.

