

# Fitting Instructions



SKU

**T7Y803**

PRODUCT

**TAG Heavy Duty Towbar  
for Ssangyong Musso LWB  
(03/2019-on)**

SPECIFICATIONS

- Towbar Class: CL 4 Heavy Duty
- Towing Capacity: 3500kg
- Tow ball Weight: 350kg
- Approximate Fitment Time: 1 Hour



Scan for  
latest version  
of instructions

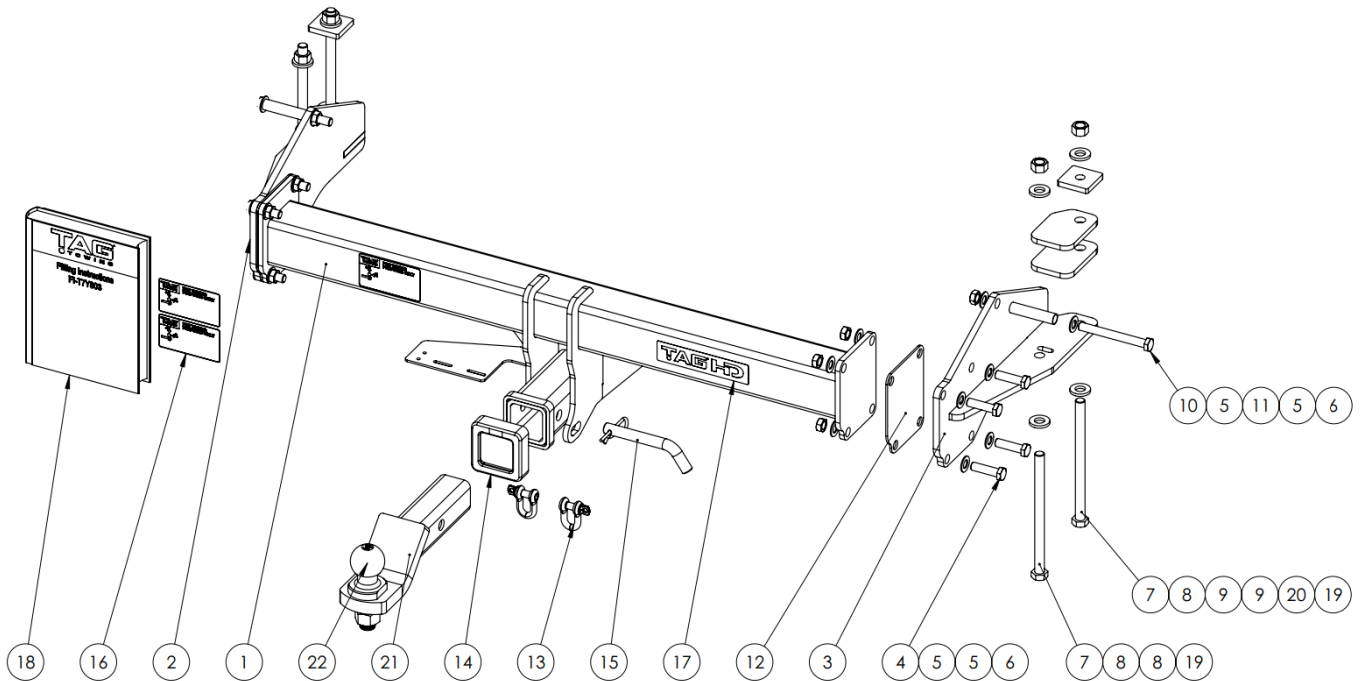
TOOLS REQUIRED

- Spanners
- Sockets
- Air Saw or similar.
- Trim Removal Tool
- Torque Wrench

IN THIS GUIDE

- Fitment Instructions
- Torque Settings
- Warranty Info

# Towbar Assembly



Item No.	Description	QTY.	Item No.	Description	QTY.
1	Welded Assembly for T7Y803	1	12	End Cap Spacer 3mm	2
2	End Plate Assembly	1	13	D-Shackle - 10mm. 1000kg	2
3	End Plate Assembly DS	1	14	Cover Hitch Receiver Collar TAG	1
4	M12 x 1.25 x 45 Bolt	8	15	Class 4 Pin & Clip	1
5	M12 Flat Washer	20	16	TAG Compliance Sticker	3
6	M12 X 1.25 Nut	10	17	TAG HD Sticker 150 x 33mm	1
7	M14 X 200 X 2.0 Bolt	4	18	T7Y803 Fitting Instructions	1
8	BM14 Flat Washer	8	19	M14 x 2 Nut	4
9	Chassis Spacer 8mm	4	20	Top Plate - 50x50x8 14mm Hole	2
10	M12 x 1.25 x 110 Hex Bolt	2	21	L4045S Ball Mount	1
11	Chassis Tube Spacer	2	22	50mm TAG Tow Ball with Flat edge - Chrome (TAG Printed Box)	1



## Important Information

### Warning:

- This product is for towing purposes only and must only be loaded as shown in your vehicle Owner's Manual.
- This towbar is NOT to be drilled, cut, welded, or modified in any way.
- Check behind chassis rail and body panels before drilling to ensure no hazards are present.
- All load ratings shown are under the assumption your trailer has a functional braking system installed.
- When installed in positions other than the one depicted in these instructions the Tow Ball Mount may interfere or obstruct certain features of your vehicle (tailgate opening, Chassis clearance, etc.)

### General:

- Before fitting this towbar read fitting instructions and check installation hardware is correct.
- Check that the towbar is suitable for the vehicle and be wary of any changes to the vehicle design that may conflict with the fitting of this towbar. (Tray, Canopy, Suspension etc.)
- After drilling, blow any filings clear, remove any swarf and treat exposed metal with a rust inhibitor.
- The high tensile fasteners supplied with this product are an integral feature to achieving the specified rating, if replacement is required ensure that fasteners of the same grade (8.8) & quality are used. Contact an authorised TAG distributor or the TAG fitment center - (07) 3208 3022 - if further information is required.

### Towbar Maintenance and Care:

It is recommended, when not in use, the Tow Ball Mount assembly and class 4 Pin and Clip is stored inside the car away from moisture to prevent standing water from forming rust. Inspect to ensure, on regular basis, fasteners are torqued to the specifications below and in good condition.

Ensure that the fitting instructions are read and understood prior to fitment  
Place these instructions in the vehicle's glovebox after installation is completed.

<i>Metric Bolt Torque Settings</i>										
Diameter	Pitch	Grade	Torque	Unit		Diameter	Pitch	Grade	Torque	Unit
M8	1.25	8.8	29	Nm		M12	1.50	8.8	97	Nm
M10	1.25	8.8	57	Nm		M12	1.75	8.8	77	Nm
M10	1.50	8.8	44	Nm		M14	2.00	8.8	122	Nm
M12	1.25	8.8	101	Nm		M16	2.00	8.8	190	Nm

# Installation Instructions

## Step 1: Fit Towbar

- a. Lower the spare wheel.
- b. Remove the exhaust from the rear most rubber hanger.
- c. Insert M12x 110 bolt with flat washer into the rear most horizontal hole of the chassis. Insert the tube spacer onto the bolt and align the bolt with the inner face of the chassis.
- d. Lift the end plate up to the inside of each chassis rail and push M12x 110 bolt through. Loosely fasten with a M12 nut.
- e. Insert M14x 200 bolts into rear most vertical hold and loosely fasten on top of chassis with flat washer & nut.
- f. Insert 2x 8mm chassis packers between the end plate and the bottom of chassis and align holes. Insert remaining M14 bolt into end plate and chassis and loosely fasten with M14 nut & 50x50x8mm square washer on top of chassis.
- g. Repeat steps c-f on opposite side.
- h. Lift the main bar up to the inside of each end plate assembly and insert M12x 40 bolts with flat washers. Fasten loosely with M12 nuts & flat washers.
- i. Beginning at the chassis, tighten all bolts to the torque specification on page 3.
- j. Refit exhaust onto hanger.
- k. Attach plastic hitch surround.
- l. Insert ball mount & secure with pull pin & clip.
- m. Raise the spare wheel.

- a. Apply one of the compliance labels to the pillar of the driver's door. Leave the remaining label and the fitting instructions in the vehicle handbook





## **TAG Warranty Statement**

SWD warrants your TAG Towbar for its full product life under the following conditions:

- You can show proof of purchase.
- The towbar has been correctly installed by a suitably qualified installer.
- The towbar has not been modified or abused in any way and has only been used for the purpose intended.
- The towbar was not fitted second hand to your vehicle.

The extent of this warranty includes materials and workmanship used in the manufacture of the towbar and is to the equivalent value of current, full replacement cost.

Nothing stated or implied in this warranty limits in any way, the statutory rights that you may have.

To make a claim visit the original installer in the first instance or, if you are unable to or are not satisfied with their help, then contact us direct by phone on 1300 669122 or visit [www.swd.com.au](http://www.swd.com.au).