

# Fitting Instructions



SKU

**T7T798**

PRODUCT

**TAG Heavy Duty Towbar  
for Toyota Rav4 (01/2019- on)**

SPECIFICATIONS

- Towbar Class: CL 4 Heavy Duty
- Towing Capacity: 1500kg
- Tow ball Weight: 150kg
- Approx. Fitment Time: 90 Minutes



Scan for latest  
version of these  
instructions

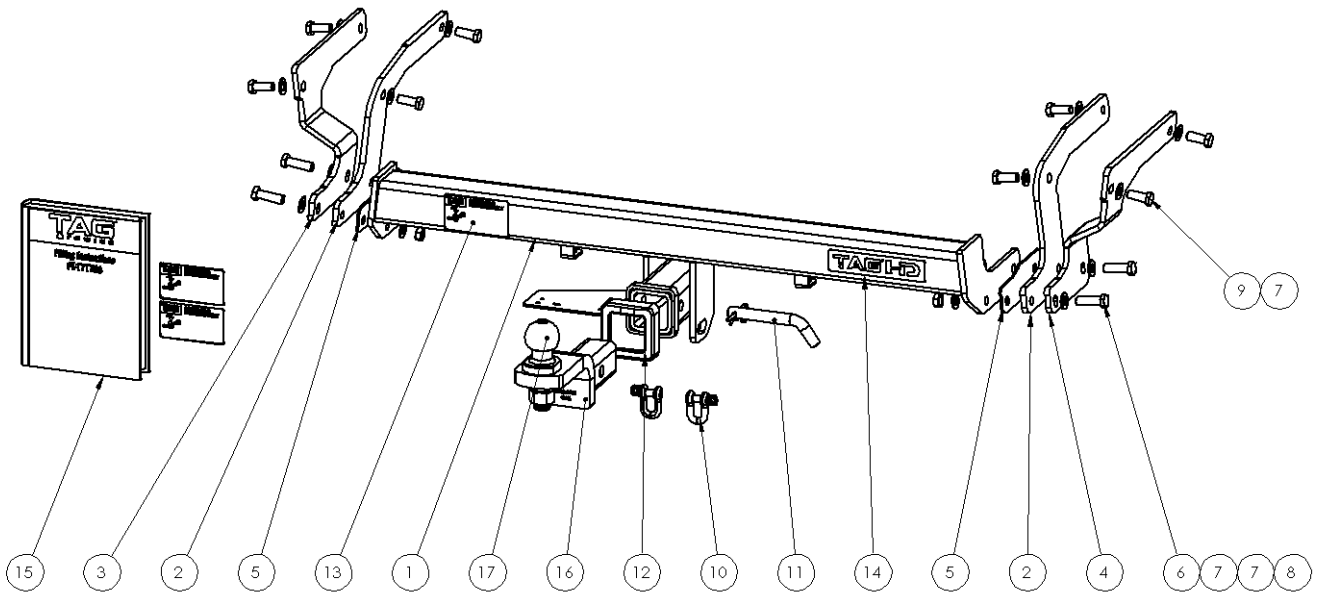
TOOLS REQUIRED

- Spanners
- Sockets
- Air Saw or similar.
- Trim Removal Tool
- Torque Wrench

IN THIS GUIDE

- Fitment Instructions
- Torque Settings
- Warranty Info

# Towbar Assembly



Item No.	Description	QTY.	Item No.	Description	QTY.
1	T7T798 Centre Assembly	1	10	D-Shackle - 10mm. 1000kg	2
2	Inner Chassis Mount	2	11	Class 4 Pin & Clip	1
3	Outer Chassis Mount Plate	1	12	TAG Hitch Cover	1
4	Outer Chassis Mount (DS)	1	13	TAG Compliance Sticker	3
5	Packer Plate	2	14	TAG HD Sticker 150 x 33mm	1
6	M12 x 1.25 x 40 Bolt	4	15	T7T798 Fitting Instruction	1
7	M12 Flat Washer	16	16	TAG Tow Ball Mount - L4120,	1
8	M12x1.25 Nut	4	17	50mm TAG Tow Ball - Chrome	1
9	M12 x 1.25 x 30 Bolt	8			

# Important Information



## Warning:

- This product is for towing purposes only and must only be loaded as shown in your vehicle Owner's Manual.
- This towbar is NOT to be drilled, cut, welded, or modified in any way.
- Check behind chassis rail and body panels before drilling to ensure no hazards are present.
- All load ratings shown are under the assumption your trailer has a functional braking system installed.
- When installed in positions other than the one depicted in these instructions the Tow Ball Mount may interfere or obstruct certain features of your vehicle (tailgate opening, Chassis clearance, etc.)

## General:

- Before fitting this towbar read fitting instructions and check installation hardware is correct.
- Check that the towbar is suitable for the vehicle and be wary of any changes to the vehicle design that may conflict with the fitting of this towbar. (Tray, Canopy, Suspension etc.)
- After drilling, blow any filings clear, remove any burrs and treat exposed metal with a rust inhibitor.
- The high tensile fasteners supplied with this product are an integral feature to achieving the specified rating, if replacement is required ensure that fasteners of the same grade (8.8) & quality are used. Contact an authorised TAG distributor or the TAG fitment center - (07) 3208 3022 - if further information is required.

## Towbar Maintenance and Care:

It is recommended, when not in use, the Tow Ball Mount assembly and class 4 Pin and Clip is stored inside the car away from moisture to prevent standing water from forming rust. Inspect to ensure, on regular basis, fasteners are torqued to the specifications below and in good condition.

Ensure that the fitting instructions are read and understood prior to fitment, Following the fitment place these instructions in the vehicle's glovebox after installation is completed.

*Metric Bolt Torque Settings*

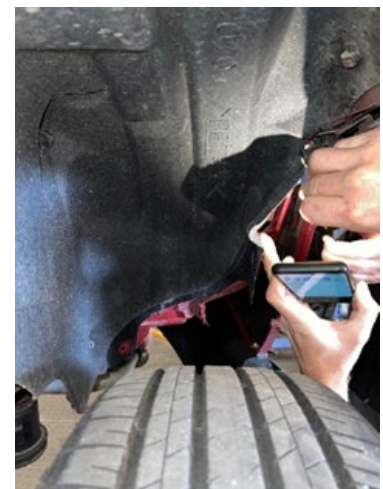
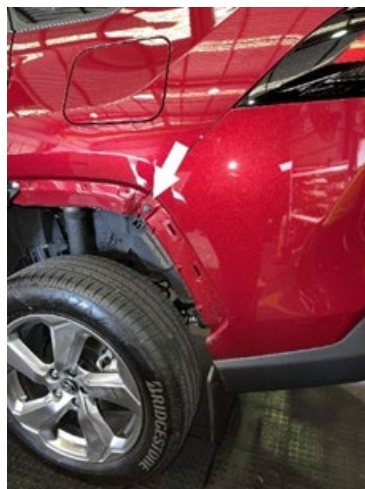
Diameter	Pitch	Grade	Torque	Unit		Diameter	Pitch	Grade	Torque	Unit
M8	1.25	8.8	29	Nm		M12	1.25	10.9	125	Nm
M10	1.25	8.8	57	Nm		M12	1.50	10.9	105	Nm
M10	1.50	8.8	44	Nm		M14	1.25	10.9	195	Nm
M12	1.25	8.8	101	Nm		M14	1.50	10.9	165	Nm
M12	1.50	8.8	97	Nm		M16	1.25	10.9	295	Nm
M12	1.75	8.8	77	Nm		M16	1.50	10.9	250	Nm
M14	2.00	8.8	122	Nm		50mm Tow Ball	N/A	N/A	300	Nm
M16	2.00	8.8	190	Nm		70mm Tow Ball	N/A	N/A	750	Nm

# Installation Instructions



## Step 1: Remove Rear Bumper

- a. Open Tailgate and remove 2 x bumper mounting screws (Pic 1 pg.3)
- b. Remove the plastic cover beside the taillight to expose the three mounting screws. Remove the lower most mount screw only (Pic 2 & 3 pg.3). Repeat for the other side.
- c. Inside the rear wheel well towards the back of the car remove the screw and with a trim puller or similar pop out the centre of the 2x black plastic scrivets to release (Pic 4 pg.3). Repeat for the other side.
- d. After removing the screws and scrivets peel the carpet wheel well liner away from the car to reveal the inside of the bumper. Using a finger to push from the inside, push the wheel flair tabs out and remove flair. Remove scrivet under the flair (Pic 5 & 6 pg.3).
- e. Remove the 2 x Screws securing the mudflap to the underside of the bumper. Repeat for the other side.
- f. On the underside of the car below the tailgate remove the 2x black plastic scrivet securing the bumper to the car
- g. Disconnect the white clip on the wiring harness located on the PS underneath the rear of the car then, starting from the wheel arches carefully peel the bumper away from the car. (Simultaneously pull up and out sharply and firmly to release the bumper from the car)
- h. Remove 6 x bolts securing the impact beam and set it to the side.
- i. Under the Vehicle on the DS remove the two bolts securing the tow hook and discard. Refit 2 x bolts and torque to 60Nm
- j. Remove the 4 x stickers from the inside and outside of the chassis rail covering the M12 Captive nuts. Repeat for the other side.



## Step 2: Fit Towbar

a. Mate the outer chassis mounting plate with the outside of the chassis rail and loosely secure with 2 x M12 x 1.25 x 35 Bolts. Repeat for the other side (Pic 1 pg.4)

b. Mate the inner chassis mounting plate with the inside of the chassis rail and loosely secure with 2 x M12 x 1.25 x 35 bolts. Repeat for the other side (Pic 2 pg.4)

**Note: a razor blade might be needed to cut out immoderate seam filler to completely fit Chassis plates (Pic 1 pg.4)**

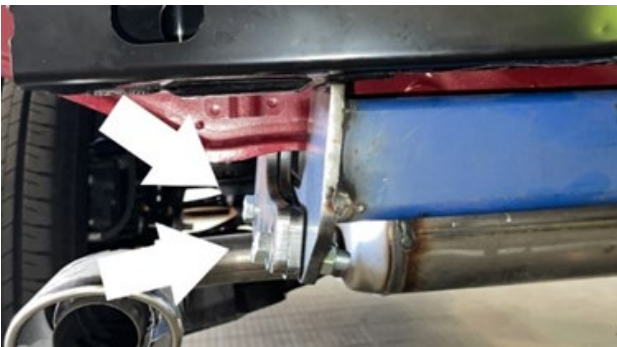
c. After finger tightening the mounting plates mate crossmember to the plates and secure with 2 x M12 x 50 bolts coupled with 2 x flat washers and a nut per bolt. Repeat on the other side.

**Note: provided 3mm spacer plates can be used where immoderate clearance between the cross member and mount plates is present (Pic 3 pg.4)**

d. Tighten all bolts to the torque specification on page 3.

e. Replace the impact beam.

**Note: If clearance is not possible between the impact beam and towbar discard the beam and mounting bolts.**



## Step 3: Cut Bumper

**Note:** The towbar installer is ultimately responsible for the location & quality of the bumper cut. To avoid mistakes, please use the following measurements as a guide only. We suggest making small incremental cuts and regularly test-fit the bumper to ensure an accurate and tidy appearance. The additional application of rubber pinch-weld around the cut edge ensures a neat & tidy look.

- a. Establish the centre of the bumper.
- b. Mark the cut-out 90mm wide x 130mm deep from the bottom lip of the bumper. See diagram.
- c. Cut the bumper using an air hacksaw or other suitable cutting device.
- d. De-burr all cut edges.
- e. Refit bumper in reverse of steps 1a-i.



# Installation Instructions



---

## Step 4: Complete Towbar & Apply Spare Compliance Label

---

- a. Attach TAG Hitch cover with rubber mallet carefully to prevent breaking.
- b. Attach Tow ball to Ball Mount and slide hitch into towbar and secure with Pin and Clip if you are going to tow straight away, alternatively secure Ball Mount in a safe place inside your car.
- c. Apply one of the compliance labels to the pillar of the driver's door. Leave the remaining label and the fitting instructions in the vehicle handbook.



# TAG Warranty Statement



SWD warrants your TAG Towbar for its full product life under the following conditions:

- You can show proof of purchase.
- The towbar has been correctly installed by a suitably qualified installer.
- The towbar has not been modified or abused in any way and has only been used for the purpose intended.
- The towbar was not fitted second hand to your vehicle.

The extent of this warranty includes materials and workmanship used in the manufacture of the towbar and is to the equivalent value of current, full replacement cost.

Nothing stated or implied in this warranty limits in any way, the statutory rights that you may have.

To make a claim visit the original installer in the first instance or, if you are unable to or are not satisfied with their help, then contact us direct by phone on 1300 669122 or visit [www.swd.com.au](http://www.swd.com.au).