

# Fitting Instructions



SKU

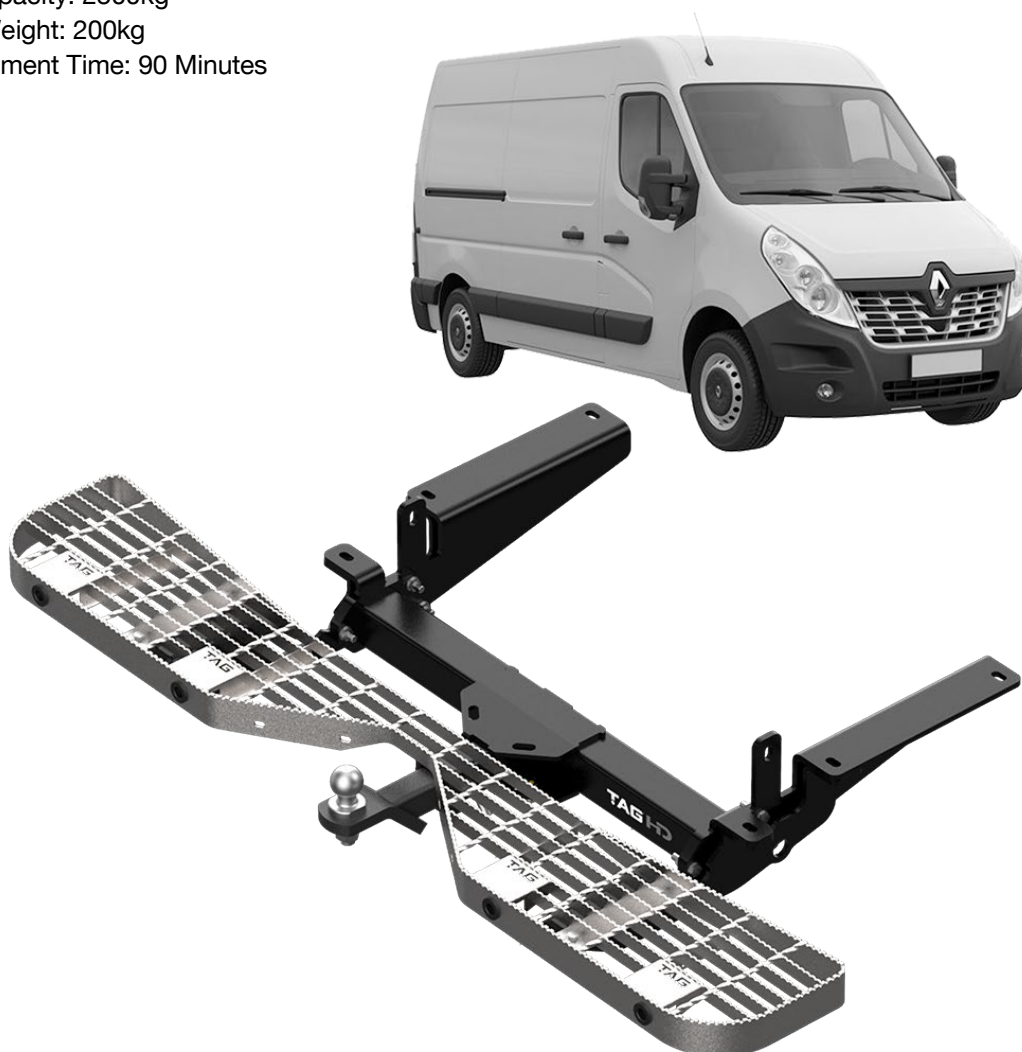
**T7P739**

PRODUCT

## **TAG Heavy Duty Towbar & Rear Step for Renault Master (09/2011 - on)**

SPECIFICATIONS

- Towbar Class: CL 4 Heavy Duty
- Towing Capacity: 2500kg
- Tow ball Weight: 200kg
- Approx. Fitment Time: 90 Minutes



Scan for latest version of these instructions

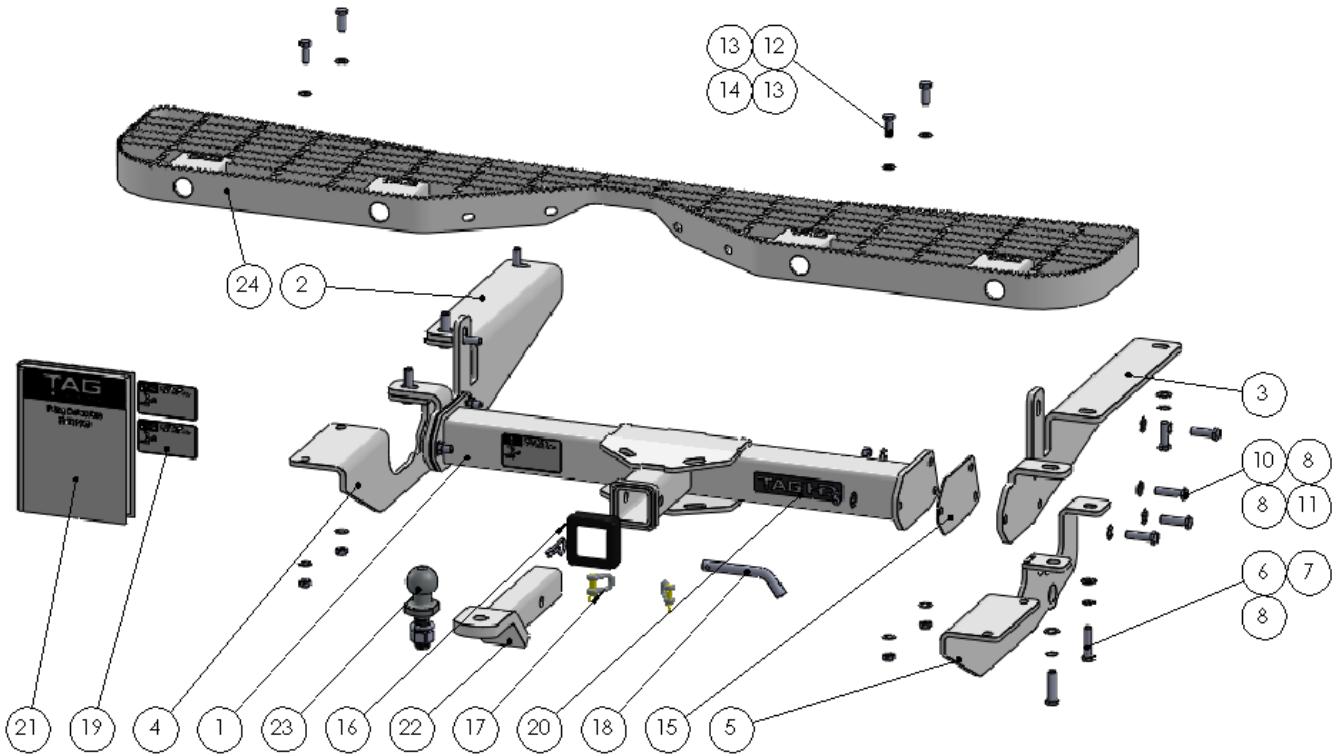
TOOLS REQUIRED

- Spanners
- Sockets
- Air Saw or similar.
- Trim Removal Tool
- Torque Wrench

IN THIS GUIDE

- Fitment Instructions
- Torque Settings
- Warranty Info

# Towbar Assembly



ITEM NO.	DESCRIPTION	QTY.	ITEM NO.	DESCRIPTION	QTY.
1	Main Bar Assembly	1	13	M10 Flat Washer	8
2	End Plate PS	1	14	M10 x 1.25 Nut	4
3	End Plate DS	1	15	Spacer 3mm	2
4	PS Step Mount	1	16	TAG Hitch Cover	1
5	DS Step Mount	1	17	D-Shackle - 10mm. 1000kg	2
6	M12 x 1.75 x 50 Set Screw	4	18	Class 4 Pin & Clip	1
7	M12 Shakeproof Washer	8	19	TAG Compliance Sticker	3
8	M12 Flat Washer	20	20	TAG HD Sticker 150 x 33mm	1
9	M12 x 1.75 x 40 Hex Set Screw	4	21	Fitting Instruction	1
10	M12 x 1.25 x 45 Hex Bolt	6	22	L4045 TBM	1
11	M12 x 1.25 Nut	6	23	50mm TAG Tow Ball with Flat edge	1
12	M10 x 30 x 1.25 Bolt	4	24	TAG Rear Step with Towing Relief	1

# Important Information



## Warning:

- This product is for towing purposes only and must only be loaded as shown in your vehicle Owner's Manual.
- This towbar is NOT to be drilled, cut, welded, or modified in any way.
- Check behind chassis rail and body panels before drilling to ensure no hazards are present.
- All load ratings shown are under the assumption your trailer has a functional braking system installed.
- When installed in positions other than the one depicted in these instructions the Tow Ball Mount may interfere or obstruct certain features of your vehicle (tailgate opening, Chassis clearance, etc.)

## General:

- Before fitting this towbar read fitting instructions and check installation hardware is correct.
- Check that the towbar is suitable for the vehicle and be wary of any changes to the vehicle design that may conflict with the fitting of this towbar. (Tray, Canopy, Suspension etc.)
- After drilling, blow any filings clear, remove any burrs and treat exposed metal with a rust inhibitor.
- The high tensile fasteners supplied with this product are an integral feature to achieving the specified rating, if replacement is required ensure that fasteners of the same grade (8.8) & quality are used. Contact an authorised TAG distributor or the TAG fitment center - (07) 3208 3022 - if further information is required.

## Towbar Maintenance and Care:

It is recommended, when not in use, the Tow Ball Mount assembly and class 4 Pin and Clip is stored inside the car away from moisture to prevent standing water from forming rust. Inspect to ensure, on regular basis, fasteners are torqued to the specifications below and in good condition.

Ensure that the fitting instructions are read and understood prior to fitment, Following the fitment place these instructions in the vehicle's glovebox after installation is completed.

*Metric Bolt Torque Settings*

Diameter	Pitch	Grade	Torque	Unit		Diameter	Pitch	Grade	Torque	Unit
M8	1.25	8.8	29	Nm		M12	1.25	10.9	125	Nm
M10	1.25	8.8	57	Nm		M12	1.50	10.9	105	Nm
M10	1.50	8.8	44	Nm		M14	1.25	10.9	195	Nm
M12	1.25	8.8	101	Nm		M14	1.50	10.9	165	Nm
M12	1.50	8.8	97	Nm		M16	1.25	10.9	295	Nm
M12	1.75	8.8	77	Nm		M16	1.50	10.9	250	Nm
M14	2.00	8.8	122	Nm		50mm Tow Ball	N/A	N/A	300	Nm
M16	2.00	8.8	190	Nm		70mm Tow Ball	N/A	N/A	750	Nm

# Installation Instructions



## Step 1: Remove Rear Bumper

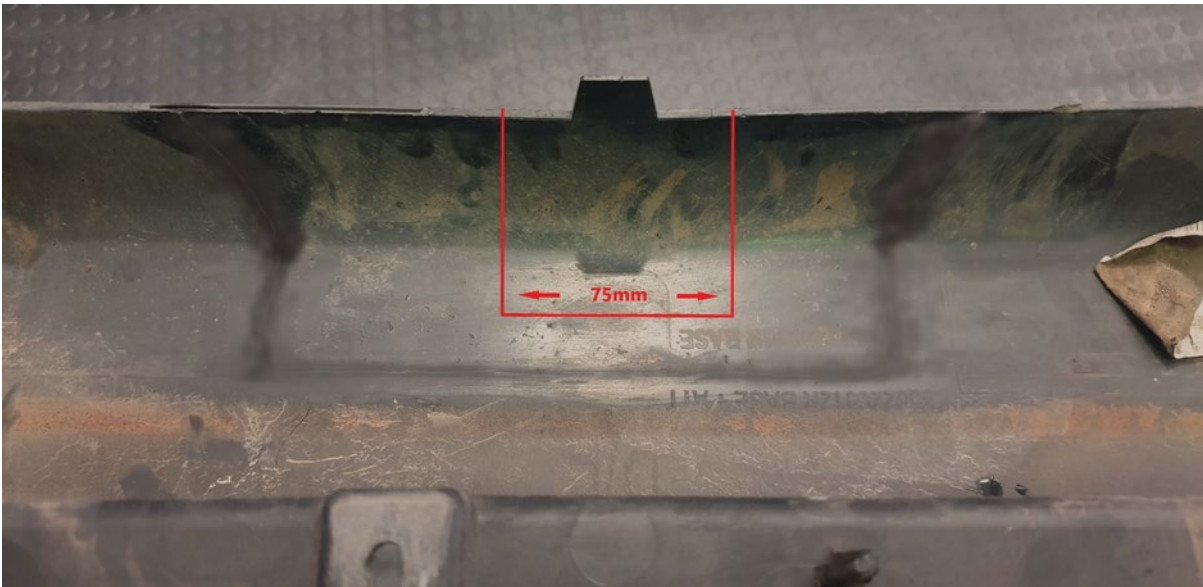
- i. **Note to installer: Fitting of this step will inhibit the correct function of the reverse sensors. It is recommended that the provided RSM Kit be used to relocate the OEM reverse sensors onto the step & wiring extended.**
  - a. Remove the factory towing/shipping hook from the PS Chassis if fitted via 4 M12 bolts. Discard tow hook & bolts.
  - b. Open rear doors.
  - c. Remove Torx head bolts securing bumper cover to body around rubber seal.
  - d. Remove plastic scrivenets from bumper cover near rear wheel arch.
  - e. Gently pull outer cover outwards.
  - f. Unclip the bottom of the centre bumper cover & unplug both (2) reverse sensor harnesses.



## Step 2: Cut Bumper

**Note:** The towbar installer is ultimately responsible for the location & quality of the bumper cut. To avoid mistakes, please use the following measurements as a guide only. We suggest making small incremental cuts and regularly test-fitting the bumper to ensure an accurate and tidy appearance. The additional application of rubber pinch-weld around the cut edge ensures a neat & tidy look.

- a. Establish the centre of the bumper.
- b. Mark the cut-out 90mm wide x 120mm deep from the bottom lip of the bumper. See diagram.
- c. Cut the bumper using an air hacksaw or other suitable cutting device.
- d. De-burr all cut edges.
- e. Refit bumper in reverse of steps 1a-l.



## Step 3: Fit Bar & Step

- a. Bolt the towbar end plates up to the chassis using the M12x 1.75x 40 bolts with flat & shake proof washers in forward most holes and side holes. Leave loose.
- b. Bolt the main bar to the endplates with the M12x 1.25x 45 bolts & flat washers.
  - If there is more than approx. 3mm clearance between the parts on each side, then spacers will be required.
  - If the clearance is less than this, spacers will not be required between the parts.
- c. Refit the bumper bar in reverse of step 1(a-f).
- d. Mount the step bracket assembly to the bottom side of the towbar end plates and insert M12x 50 bolts with flat & shakeproof washers.
- e. Mount the step to the step bracket assemblies and insert M10x 30 bolts with washers & nuts.
- f. Tighten all bolts to the torque specification on page 3.



# Installation Instructions



---

## Step 4: Complete Towbar & Apply Spare Compliance Label

---

- a. Attach TAG Hitch cover with rubber mallet carefully to prevent breaking.
- b. Attach Tow ball to Ball Mount and slide hitch into towbar and secure with Pin and Clip if you are going to tow straight away, alternatively secure Ball Mount in a safe place inside your car.
- c. Apply one of the compliance labels to the pillar of the driver's door. Leave the remaining label and the fitting instructions in the vehicle handbook.



# TAG Warranty Statement



SWD warrants your TAG Towbar for its full product life under the following conditions:

- You can show proof of purchase.
- The towbar has been correctly installed by a suitably qualified installer.
- The towbar has not been modified or abused in any way and has only been used for the purpose intended.
- The towbar was not fitted second hand to your vehicle.

The extent of this warranty includes materials and workmanship used in the manufacture of the towbar and is to the equivalent value of current, full replacement cost.

Nothing stated or implied in this warranty limits in any way, the statutory rights that you may have.

To make a claim visit the original installer in the first instance or, if you are unable to or are not satisfied with their help, then contact us direct by phone on 1300 669122 or visit [www.swd.com.au](http://www.swd.com.au).