

Fitting Instructions



SKU

T7F860

PRODUCT

**TAG Heavy Duty Towbar
for Next-Gen Ford Everest
(05/2022-on)**

SPECIFICATIONS

- Towbar Class: CL 4 Heavy Duty
- Towing Capacity: 3500kg
- Tow ball Weight: 350kg
- Approx. Fitment Time: 90 Minutes



Scan for latest
version of these
instructions

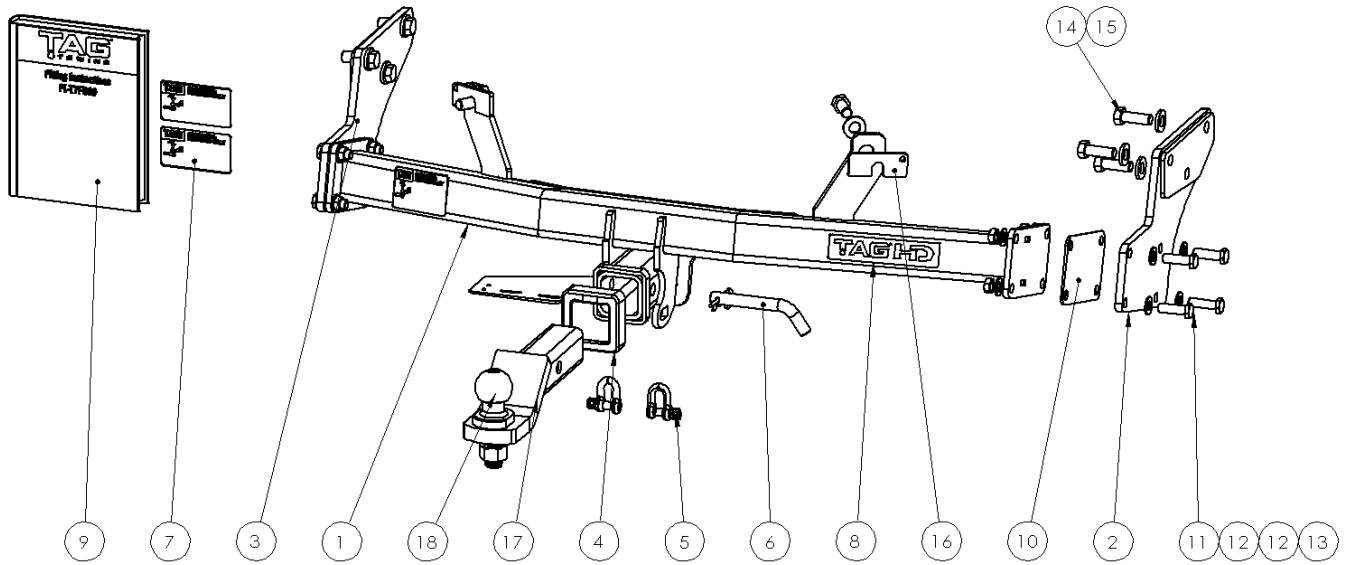
TOOLS REQUIRED

- Spanners
- Sockets
- Air Saw or similar.
- Trim Removal Tool
- Torque Wrench

IN THIS GUIDE

- Fitment Instructions
- Torque Settings
- Warranty Info

Towbar Assembly



Item No.	Description	QTY.	Item No.	Description	QTY.
1	Main Bar Assembly	1	10	End Plate Packer	2
2	Side Chassis Mount DS	1	11	M12 x 1.25 x 40 Bolt	8
3	Side Chassis Mount	1	12	M12 Flat Washer	16
4	Cover Hitch Receiver Collar TAG	1	13	M12 x 1.25 Nut	8
5	D-Shackle - 10mm. 1000kg	2	14	M14 x 2.0 x 40 Bolt	8
6	Class 4 Pin & Clip	1	15	M14 Flat Washer	8
7	TAG Compliance Sticker	3	16	Chassis Cross Member Brace Packer	2
8	TAG HD Sticker 150 x 33mm	1	17	L4045S Ball Mount	1
9	Fitting Instruction	1	18	50mm TAG Tow Ball with Flat edge	1

Important Information



Warning:

- This product is for towing purposes only and must only be loaded as shown in your vehicle Owner's Manual.
- This towbar is NOT to be drilled, cut, welded, or modified in any way.
- Check behind chassis rail and body panels before drilling to ensure no hazards are present.
- All load ratings shown are under the assumption your trailer has a functional braking system installed.
- When installed in positions other than the one depicted in these instructions the Tow Ball Mount may interfere or obstruct certain features of your vehicle (tailgate opening, Chassis clearance, etc.)

General:

- Before fitting this towbar read fitting instructions and check installation hardware is correct.
- Check that the towbar is suitable for the vehicle and be wary of any changes to the vehicle design that may conflict with the fitting of this towbar. (Tray, Canopy, Suspension etc.)
- After drilling, blow any filings clear, remove any burrs and treat exposed metal with a rust inhibitor.
- The high tensile fasteners supplied with this product are an integral feature to achieving the specified rating, if replacement is required ensure that fasteners of the same grade (8.8) & quality are used. Contact an authorised TAG distributor or the TAG fitment center - (07) 3208 3022 - if further information is required.

Towbar Maintenance and Care:

It is recommended, when not in use, the Tow Ball Mount assembly and class 4 Pin and Clip is stored inside the car away from moisture to prevent standing water from forming rust. Inspect to ensure, on regular basis, fasteners are torqued to the specifications below and in good condition.

Ensure that the fitting instructions are read and understood prior to fitment, Following the fitment place these instructions in the vehicle's glovebox after installation is completed.

Metric Bolt Torque Settings

Diameter	Pitch	Grade	Torque	Unit		Diameter	Pitch	Grade	Torque	Unit
M8	1.25	8.8	29	Nm		M12	1.25	10.9	125	Nm
M10	1.25	8.8	57	Nm		M12	1.50	10.9	105	Nm
M10	1.50	8.8	44	Nm		M14	1.25	10.9	195	Nm
M12	1.25	8.8	101	Nm		M14	1.50	10.9	165	Nm
M12	1.50	8.8	97	Nm		M16	1.25	10.9	295	Nm
M12	1.75	8.8	77	Nm		M16	1.50	10.9	250	Nm
M14	2.00	8.8	122	Nm		50mm Tow Ball	N/A	N/A	300	Nm
M16	2.00	8.8	190	Nm		70mm Tow Ball	N/A	N/A	750	Nm

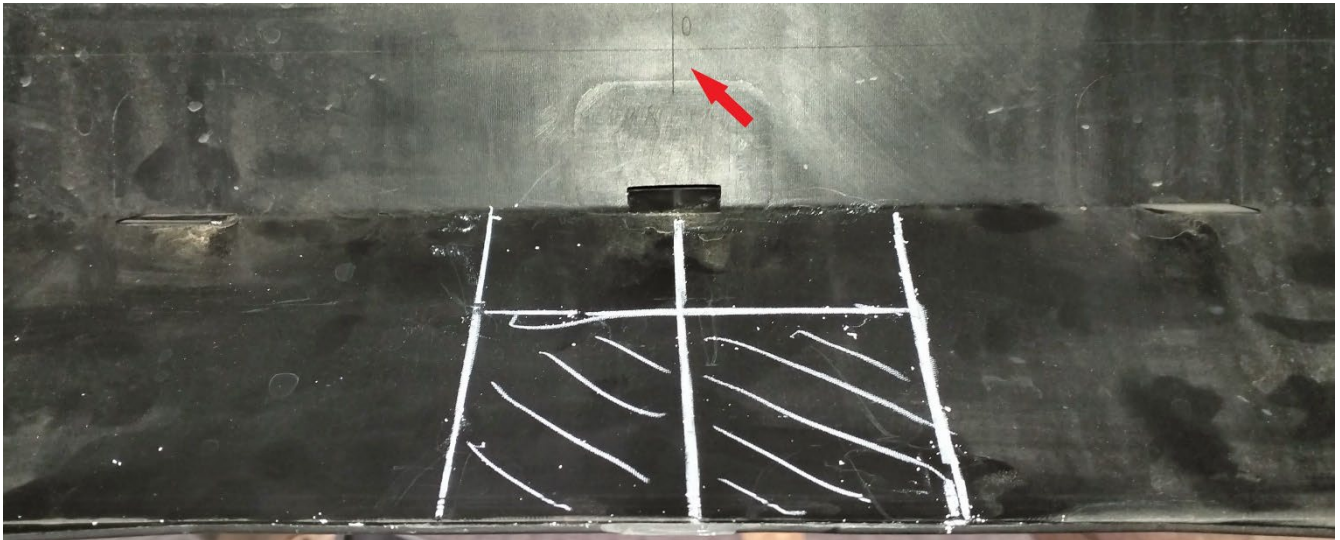
Step 1: Lower Spare Wheel

- a. Open tailgate, lift rear most false floor to reveal tool kit and spare tire winch access. Use the vehicle tools to lower the spare wheel.
- b. Remove the two inner-most hex head bolts from the lower edge of the bumper to allow flex when mounting the towbar. (8mm socket / spanner)

Step 2: Cut Bumper

Note: The towbar installer is ultimately responsible for the location & quality of the bumper cut. To avoid mistakes, please use the following measurements as a guide only. We suggest making small incremental cuts and regularly test-fitting the bumper to ensure an accurate and tidy appearance. The additional application of rubber pinch-weld around the cut edge ensures a neat & tidy look.

- a. Establish the centre of the bumper. (Centre line is imprinted inside bumper)
- b. Mark the cut-out 90mm wide. Mark across the bottom flat/ horizontal section of the bumper. Measure 50mm up from this bottom section toward the 1st contour line of the bumper. See picture.
- c. Cut the bumper using an air hacksaw or other suitable cutting device.
- d. De-burr all cut edges.



Step 3: Fit Towbar

- a. Lift the endplates up to the inside of each chassis rail and loosely fasten with 3x M14x 2.0x 40 bolts with flat washers per side.
- b. Lift the main bar up to the chassis end plates being sure to flex out the bumper to enable the main bar to sit inside the cavity. Insert 4x M12 x 1.25 x 40 bolts with flat washers per side. Loosely fasten with nuts & flat washers.
- c. Insert 2x M14x 2.0x 40 bolt with flat washer into the main bar braces and the chassis crossmember.
- d. **Note: If there is a gap greater than 6mm between the chassis cross member and main bar braces, insert the 6mm packers provided in the fitting kit. Otherwise, discard the packers.**
- e. Beginning at the chassis, tighten all bolts to the torque specification on page 3.
- f. Reinstall the two inner-most hex head bolts (step1b).



Installation Instructions



Step 4: Complete Towbar & Apply Spare Compliance Label

- a. Attach TAG Hitch cover with rubber mallet carefully to prevent breaking.
- b. Attach Tow ball to Ball Mount and slide hitch into towbar and secure with Pin and Clip if you are going to tow straight away, alternatively secure Ball Mount in a safe place inside your car.
- c. Apply one of the compliance labels to the pillar of the driver's door. Leave the remaining label and the fitting instructions in the vehicle handbook.

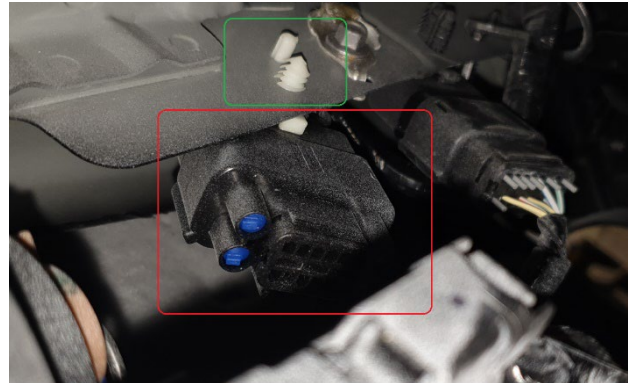
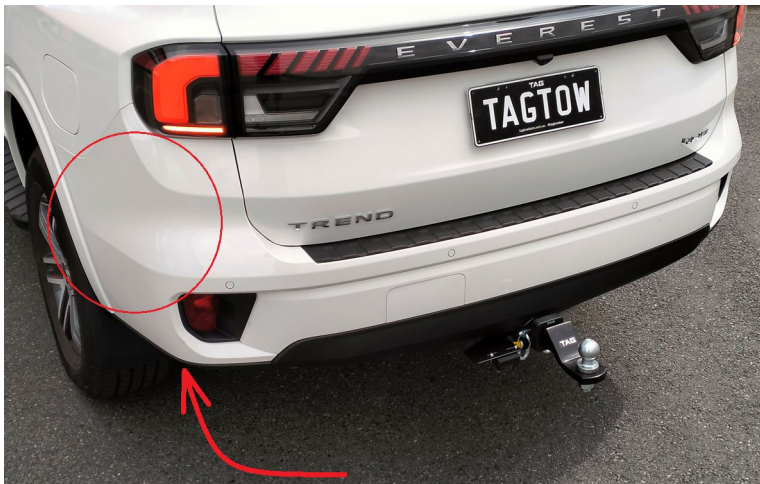


Installation Instructions



Step 5: Wiring Harness Installation (for BR-712365 harness only)

- Disconnect the negative (earth) terminal from the battery. This must be carried out to avoid damaging the vehicles' electrical system.
- Locate the unused bumper harness & plug located in the rear bumper on the passengers side.
- Remove the plug from its securing scrivet to allow for slack of the cables for easier access for working on.



- These wires will need to be spliced so remove enough tape to allow for easy access.
- The trailer harness included in the kit will have the same male plug as the vehicle harness therefore, it will be necessary to cut the trailer harness plug off.

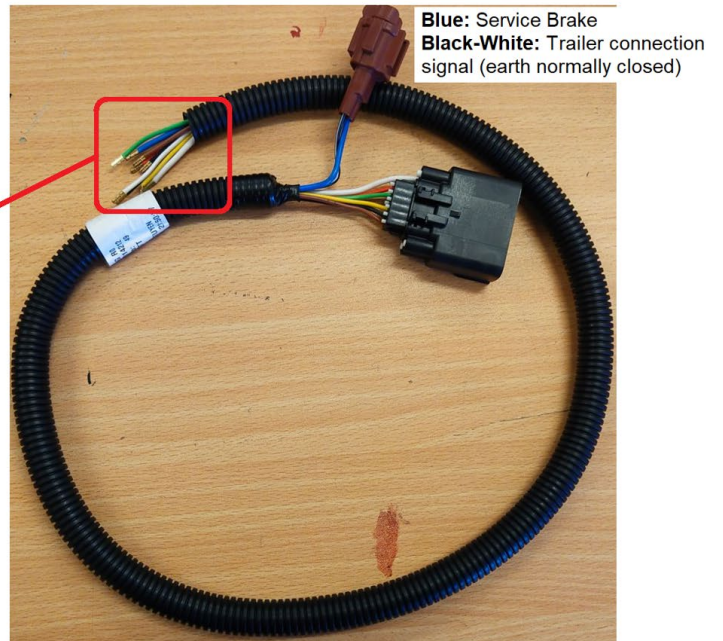
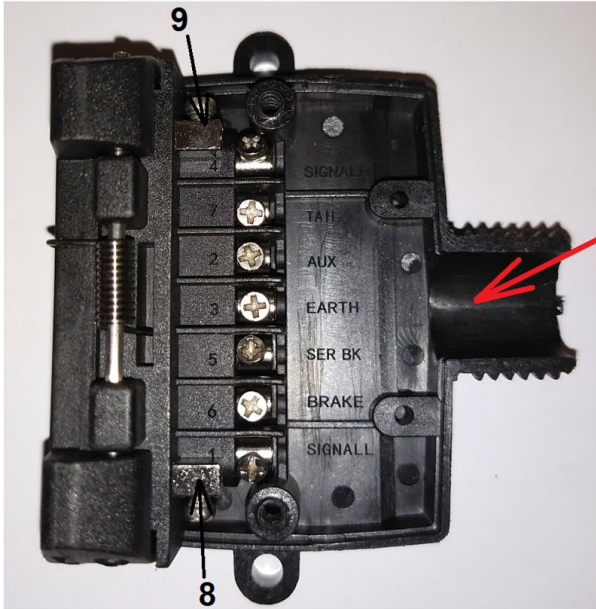


- Splice the corresponding coloured wires into the vehicle harness. It is recommended to splice and solder the wires however, Scotch Locks may be used.

Installation Instructions



- g. Apply adequate insulation tape to each of the spliced wires then apply tape to all wires gathering them up neatly. Make sure to apply tape to all areas where tape was originally removed.
- h. Secure the Trailer Wiring Harness to the supplied Normally Closed Trailer Socket. Refer to the table below.

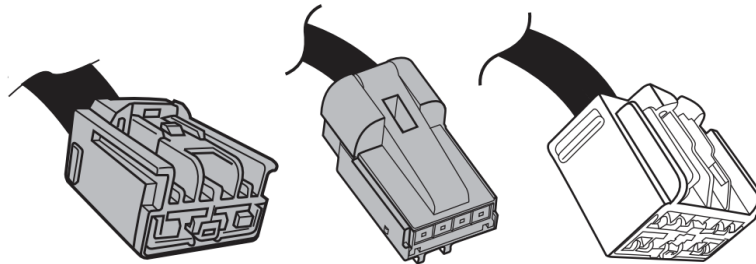


Pin No.	Function	Cable Colour
1	Left-hand Indicator Signal	YELLOW
2	Reverse light signal/Aux	BLACK
3	Earth return	WHITE (thick)
4	Right-hand indicator signal	GREEN
5	Service brakes	BLUE
6	Stop Lamp/Brake signal	RED
7	Tail light signal	BROWN
8	Earth (when applicable)	WHITE (thin)
9	Parking aid ground (when applicable)	BLACK/WHITE

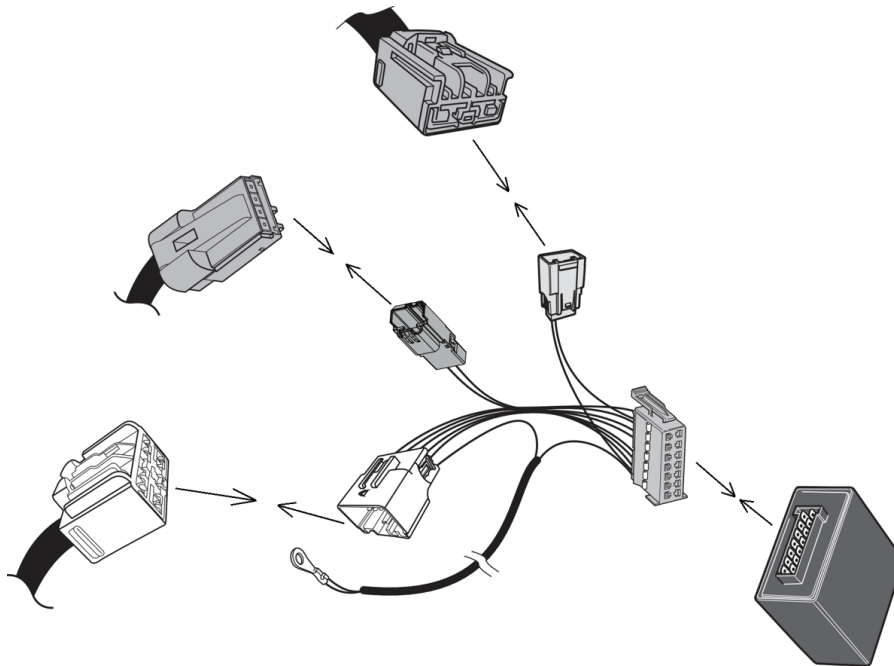
Installation Instructions



- i. Inside the cabin, behind the front passenger side kick panel and up on the vehicle body, locate an L shaped bracket acting as blank plugs for the CAN bus harness. Pull the L bracket away from the vehicle body dislodging its securing scrivet to allow for access to the harness.
- j. Unplug the bracket from the harness revealing 3 plugs.



- k. Plug in the included Trailer CAN Bus Harness to the 3 corresponding plugs and plug in the Trailer CAN module to its corresponding plug.



- l. For the ground/earth wire, find a suitable M6 stud in the vicinity and fasten the earth wire to it using a suitable pitch nut. Alternatively, use a suitable size tec-screw to attach the wire to the vehicle body.
- m. Mount the Trailer CAN module to a suitable surface in the vicinity.
- n. Tidy up the harness using zip ties and tucking the harness back behind the kick panel.
- o. Tidy up the Trailer Harness wires in the rear of the vehicle with zip ties.
- p. Reconnect the earth terminal to the battery.

TAG Warranty Statement



SWD warrants your TAG Towbar for its full product life under the following conditions:

- You can show proof of purchase.
- The towbar has been correctly installed by a suitably qualified installer.
- The towbar has not been modified or abused in any way and has only been used for the purpose intended.
- The towbar was not fitted second hand to your vehicle.

The extent of this warranty includes materials and workmanship used in the manufacture of the towbar and is to the equivalent value of current, full replacement cost.

Nothing stated or implied in this warranty limits in any way, the statutory rights that you may have.

To make a claim visit the original installer in the first instance or, if you are unable to or are not satisfied with their help, then contact us direct by phone on 1300 669122 or visit www.swd.com.au.