

Fitting Instructions



SKU

UNT355

PRODUCT

TAG Direct Fit Wiring Harness for Toyota Landcruiser (07/2021 - on)

SPECIFICATIONS

- Approx. Fitment Time: 30 Minutes
- Dealer Coding Required: No
- RPA Override: Optional
- Plug & Play: Yes



Scan for latest version of these instructions

TOOLS REQUIRED

- Spanners
- Sockets
- Pliers.
- Trim Removal Tool
- Screw Drivers

IN THIS GUIDE

- Fitment Instructions
- Warnings
- Warranty Info

Important Information



Warning:

- **This unit is designed to bypass the electronic control module in the vehicle.**
- **This unit will not require dealer coding.**
- The power source wire is for 12volt only. This can be taken directly to the battery or to a constant power source. This wire must have a 10-amp blade fuse housing attached. Please check that a 10-amp fuse is installed.
- **The 10amp fuse must never be removed and cannot be changed for a higher amp fuse.**
- If your vehicle has a dedicated towbar fuse within the fuse box, this is to remain as well – no fuse is ever to be removed or cut out.
- Make sure to inform the customer that there is a 10-amp blade fuse on the power source wire wherever you have made the connection, in the event the fuse needs to be replaced. **Kindly show them where they can access it.**
- Please give this copy of the instructions to your customer.
- Contact an authorised TAG distributor or the TAG fitment center - (07) 3208 3022 - if further information is required.

7 Pin Flat Plug & Socket

PIN No.	CIRCUIT	COLOUR
1	Left-hand turn	Yellow
2	Reversing signal	Black
3	Earth return	White
4	Right-hand turn	Green
5	Service brakes	Blue
6	Stop lamps	Red
7	Rear lamps, clearance & side marker lamps	Brown



7 Pin Plug



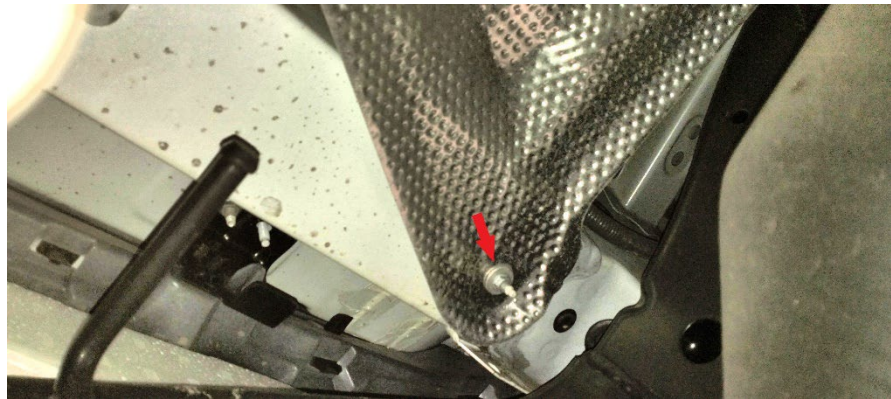
7 Pin Socket

Installation Instructions



Step 1: Install Wiring Harness

- Under the LHS rear of the vehicle, remove the M6 nut securing the heat shield to the body.
- Carefully pull the heat shield downwards to reveal 2x pre-wire towing connectors.
- Remove and discard the blanking plugs from the connectors.
- Connect the corresponding plugs of the UNT355 harness.
- Connect the 7-pin trailer plug to the tail of the UNT355 harness following the table on page 3.
- Mount the 7-pin connector to the LHS of the bumper cover.
- Use cable ties to secure the harness tail to the vehicle body.
- Re-fit the M⁶ Nut to secure the heat shield.



TAG Warranty Statement



SWD warrants your TAG Harness for its full product life under the following conditions:

- You can show proof of purchase.
- The harness has been correctly installed by a suitably qualified installer.
- The harness has not been modified or abused in any way and has only been used for the purpose intended.
- The harness was not fitted second hand to your vehicle.

The extent of this warranty includes materials and workmanship used in the manufacture of the harness and is to the equivalent value of current, full replacement cost.

Nothing stated or implied in this warranty limits in any way, the statutory rights that you may have.

To make a claim visit the original installer in the first instance or, if you are unable to or are not satisfied with their help, then contact us direct by phone on 1300 669122 or visit www.swd.com.au.