

# Fitting Instructions



## SKU

**T7D876**

## PRODUCT

**TAG Heavy Duty Towbar for Nissan Patrol Y62 (12/2012 - on)**

## SPECIFICATIONS

- Towbar Class: CL 4 Heavy Duty
- Towing Capacity: 3500kg
- Tow ball Weight: 350kg
- Approx. Fitment Time: 90 Minutes



Scan for latest version of these instructions

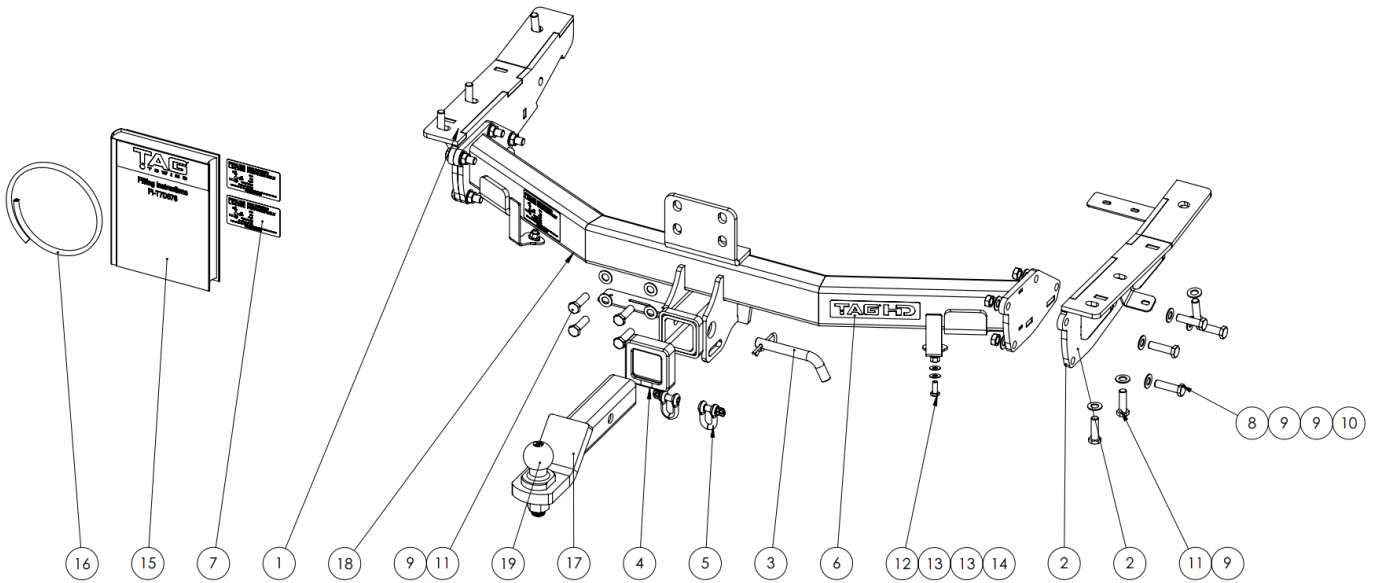
## TOOLS REQUIRED

- Spanners
- Sockets
- Air Saw or similar.
- Trim Removal Tool
- Torque Wrench

## IN THIS GUIDE

- Fitment Instructions
- Torque Settings
- Warranty Info

# Towbar Assembly



Item No.	Description	QTY.	Item No.	Description	QTY.
1	End Plate Assembly - PS	1	10	M12x1.25 Nut	8
2	End Plate Assembly - DS	1	11	M8 x 1.25 x 20 Hex Set Screw	2
3	Class 4 Pin & Clip	1	12	M8 Flat Washer	4
4	TAG Hitch Cover	1	13	M8 x 1.25 Nut	2
5	D-Shackle - 10mm. 1000kg	2	14	T7D876 Fitting Instruction	1
6	TAG HD Sticker 150 x 33mm	1	15	Rubber Pinch-weld 600mm	1
7	Compliance Lable	3	16	L4045 DURATEC PC TBM	1
8	M12 x 1.25 x 45 Hex Bolt	18	17	TXR852 Centre Assembly	1
9	M12 Flat Washer Zinc Clear	26	18	50mm TAG Tow Ball - Zinc	1

# Important Information



## Warning:

- This product is for towing purposes only and must only be loaded as shown in your vehicle Owner's Manual.
- This towbar is NOT to be drilled, cut, welded, or modified in any way.
- Check behind chassis rail and body panels before drilling to ensure no hazards are present.
- All load ratings shown are under the assumption your trailer has a functional braking system installed.
- When installed in positions other than the one depicted in these instructions the Tow Ball Mount may interfere or obstruct certain features of your vehicle (tailgate opening, Chassis clearance, etc.)

## General:

- Before fitting this towbar read fitting instructions and check installation hardware is correct.
- Check that the towbar is suitable for the vehicle and be wary of any changes to the vehicle design that may conflict with the fitting of this towbar. (Tray, Canopy, Suspension etc.)
- After drilling, blow any filings clear, remove any burrs and treat exposed metal with a rust inhibitor.
- The high tensile fasteners supplied with this product are an integral feature to achieving the specified rating, if replacement is required ensure that fasteners of the same grade (8.8) & quality are used. Contact an authorised TAG distributor or the TAG fitment center - (07) 3208 3022 - if further information is required.

## Towbar Maintenance and Care:

It is recommended, when not in use, the Tow Ball Mount assembly and class 4 Pin and Clip is stored inside the car away from moisture to prevent standing water from forming rust. Inspect to ensure, on regular basis, fasteners are torqued to the specifications below and in good condition.

Ensure that the fitting instructions are read and understood prior to fitment, Following the fitment place these instructions in the vehicle's glovebox after installation is completed.

*Metric Bolt Torque Settings*

Diameter	Pitch	Grade	Torque	Unit		Diameter	Pitch	Grade	Torque	Unit
M8	1.25	8.8	29	Nm		M12	1.25	10.9	125	Nm
M10	1.25	8.8	57	Nm		M12	1.50	10.9	105	Nm
M10	1.50	8.8	44	Nm		M14	1.25	10.9	195	Nm
M12	1.25	8.8	101	Nm		M14	1.50	10.9	165	Nm
M12	1.50	8.8	97	Nm		M16	1.25	10.9	295	Nm
M12	1.75	8.8	77	Nm		M16	1.50	10.9	250	Nm
M14	2.00	8.8	122	Nm		50mm Tow Ball	N/A	N/A	300	Nm
M16	2.00	8.8	190	Nm		70mm Tow Ball	N/A	N/A	750	Nm

# Installation Instructions



## Step 1: Remove Rear Bumper

- a. Lift the tailgate.
- b. Remove the plastic covers from the taillight.
- c. Remove 3x M6 bolts fastening the taillights and bumper.
- d. Remove taillights outward. Disconnect the harness.
- e. Remove the plastic scrivet from the cavity.
- f. Remove 6x torx head screws from the mudflap inside the wheel arch.
- g. Peel the wheel arch liner aside to reveal 1x vertical bolt fastening the bumper to the body.
- h. Remove 2x bolts rearward of the mudflap on the bottom edge of the bumper.
- i. Repeat steps 1a-h on opposite side. Retain all fasteners.
- j. Remove 2x bolts from the rear-most bumper retaining tabs.
- k. Remove and discard 2x splash guards attached to the bumper.
- l. Beginning at each wheel arch, gently peel the bumper away from the steel body and remove rearward.
- m. Disconnect the bumper harness.
- n. Keep the foam infills on the chassis/body in place.
- o. Remove and discard the towing hook and bumper retaining brackets from the chassis.





---

## Step 2: Fit Towbar

---

- a. Beginning with the forward most hole in the chassis, loosely fasten the end plates with 1x M12x 1.25x 40 bolt into the forward-most hole.
- b. Loosely fasten the rear of each end plate with the remaining M12x 1.25x 40 bolts.
- c. Lift the towbar crossmember up and loosely fasten to the chassis centre with 4x M12x 1.25x 40 bolts.
- d. Align the towbar crossmember to the end plates and loosely fasten with the remaining M12x 1.25x 45 bolts to the end plates.



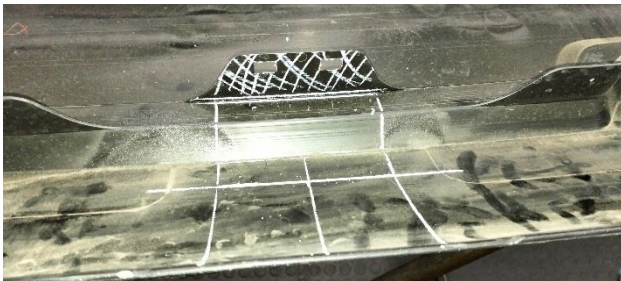
---

## Step 3: Cut Bumper

---

**Note:** The towbar installer is ultimately responsible for the location & quality of the bumper cut. To avoid mistakes, please use the following measurements as a guide only. We suggest making small incremental cuts and regularly test-fit the bumper to ensure an accurate and tidy appearance. The additional application of rubber pinch-weld around the cut edge ensures a neat & tidy look.

- a. Establish the centre line of the bumper.
- b. Measure & mark the towbar receiver cut-out to be 90mm wide x 95mm deep from the bottom lip of the bumper.
- c. The horizontal fin inside the bumper & above the receiver cut-out must also be cut & removed.
- d. De-burr & apply rubber pinch-weld to all cut edges.
- e. Refit bumper in reverse of steps 1a-m.



---

## Step 4: Complete Towbar & Apply Spare Compliance Label

---

- a. Attach TAG Hitch cover with rubber mallet carefully to prevent breaking.
- b. Attach Tow ball to Ball Mount and slide hitch into towbar and secure with Pin and Clip if you are going to tow straight away, alternatively secure Ball Mount in a safe place inside your car.
- c. Apply one of the compliance labels to the pillar of the driver's door. Leave the remaining label and the fitting instructions in the vehicle handbook.



# Installation Instructions



## Step 5: Install Wiring Harness (UNT353 – Sold Separately)

- a. Remove the negative terminal from the battery.
- b. Open the tailgate.
- c. Remove LHS & RHS taillight assemblies and unplug.



- d. Lift and fold the tool compartment cover forward.
- e. Remove the outer floor trim via 2x M6 bolts.



- f. Carefully dislodge the tailgate scuff plate.





# Installation Instructions



g. Dislodge the upper tie-down fixture. Repeat on opposite side.



h. Remove the lower tie-down fixture by lifting plastic flap and removing its securing bolt. Repeat on opposite side.



i. Carefully dislodge the outer interior trims from the body

j. Locate the taillight harness and pull through to the inside.

k. Connect the UNT353 mating plug (LHS) to the vehicle connector. Push the remaining plug back through the taillight harness hole. Repeat on the opposite side with the UNT353 mating plug (RHS).



# Installation Instructions



- l. Route the wires of the (RHS) connector across the back of the vehicle where the scuff plate will attach.
- m. On the LHS, secure the (-12v) grounding ring to the vehicle grounding bolt (M6) located forward & above the taillight harness hole.



- n. On LHS, locate the large round grommet at the lowest point behind the trim. Make a small incision and feed the tail harness (7 core) through to the outside.



- o. Route the tail harness toward the plug mount of the towbar and connect the 7-pin flat plug as per the diagram (pg2).
- p. In the engine bay, fasten the positive ring terminal to the battery and route the orange wire across the firewall and along the LHS chassis to the rear of the vehicle. Insert connector through the large grommet (step n) and connect to the UNT353 harness. **Make sure to re-seat the grommet.**

**Note: Ensure harness routing is clear of all sharp edges, moving parts and places of extreme heat.**

- q. Locate a suitable flat position for the ECU to be secured. Clean the location with an alcohol wipe, peel the cover from the double-sided tape on the ECU and adhere to the body.
- r. Loop the remaining harness and secure with cable ties.
- s. Re-install the interior trims in reverse of steps (c-i) being careful to hide the RHS taillight wire beneath the rear scuff plate.
- t. Reconnect the negative terminal of the battery & test the UNT353 harness using a light board or multi-meter.
- u. Place the fitting instructions in the glove when complete.

# TAG Warranty Statement



**SWD warrants your TAG Towbar for its full product life under the following conditions:**

- You can show proof of purchase.
- The towbar has been correctly installed by a suitably qualified installer.
- The towbar has not been modified or abused in any way and has only been used for the purpose intended.
- The towbar was not fitted second hand to your vehicle.

The extent of this warranty includes materials and workmanship used in the manufacture of the towbar and is to the equivalent value of current, full replacement cost.

Nothing stated or implied in this warranty limits in any way, the statutory rights that you may have.

To make a claim visit the original installer in the first instance or, if you are unable to or are not satisfied with their help, then contact us direct by phone on 1300 669122 or visit [www.swd.com.au](http://www.swd.com.au).