



ERICH JAEGER

## 7P/12V 100% Waterproof WEATHERLOCK™ Flat Socket - AS 4177.5

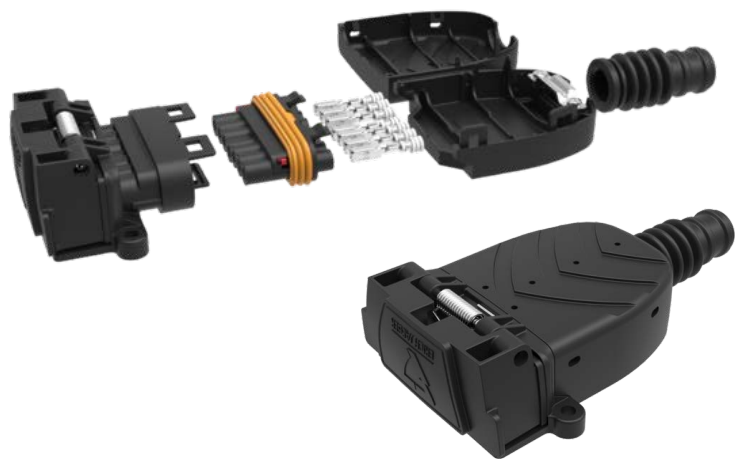
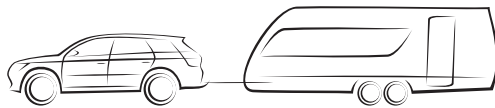
PART# 151303

WEATHERLOCK™  
TECHNOLOGY

FIBERCORE™  
COMPOSITE  
MATERIAL

TESTED TO  
AS4177.5

ENHANCED  
CORROSION  
PROTECTION



This EXPERT product from ERICH JAEGER is connectivity at its Best.

Arguably the best 7P/12V Flat AS4177.5 Trailer Socket on the market. It provides superior water tightness and corrosion protect.

WEATHERLOCK™ technology includes sophisticated, double contact systems with primary and secondary locks together with individual wire seals makes the penetration of moisture into the vehicle electrical impossible. Even under the most extreme conditions, the system provides 100% water-tightness. The socket is made with Erich Jaeger's proprietary FIBERCORE™ composite material to make it the toughest in the industry.

# 7P/12V 100% Waterproof WEATHERLOCK™ Flat Socket - AS 4177.5





## Superior Quality and Durability

The connector system satisfies all requirements of original equipment manufacturers in the automotive industry such as protection standard IPX7 (waterproof up to 1.0m depth) and IPX9K (protection against water during high pressure-/ steam jet cleaning). In addition to the water-tightness our new 7P/12V system has greatly simplified the installation process (Plug & Play) when used with our model specific towing harness solutions. Nearly every ERICH JAEGER towing harness has this socket included as standard.

Specifications	151303
Version	AU/NZ
Voltage	12V
Pins	7
Local Standard	AS4177.5
Waterproof Standards	IPX9K, IPX7
Also available as a side exit solution for cramped spaces. See Part# 151312	
Includes WEATHERLOCK™ and FIBERCORE™ Technologies	



- Socket is watertight (IPX9K and IPX7) by lamella seal and single wire seals
- Completely tested according to Australian Standard AS 4177.5
- Cover seal for dust and splash water protection
- Separate contact insert with primary and secondary locking
- Contact on reels for automatic crimp process
- Fold cap for 180° or 45° outlet



For those professionals doing many socket installs, a crimp tool is available. This tool is OEM approved and produces a perfect crimp every time. Part #: 361066

[www.erich-jaeger.co.nz](http://www.erich-jaeger.co.nz)



Scan this for our full E-Kit catalogue



Check out our complete product line as well as our compatible line of model specific ERICH JAEGER towing wiring kits at [www.erich-jaeger.co.nz](http://www.erich-jaeger.co.nz)

