

Fitting Instructions



SKU

T4C635

PRODUCT

TAG Heavy Duty Towbar for Mitsubishi Triton with Rear Bumper/Step (05/2015 - on)

SPECIFICATIONS

- Towbar Class: CL 4 Heavy Duty
- Towing Capacity: 3100kg
- Tow ball Weight: 310kg
- Approx. Fitment Time: 90 Minutes



Scan for latest
version of these
instructions

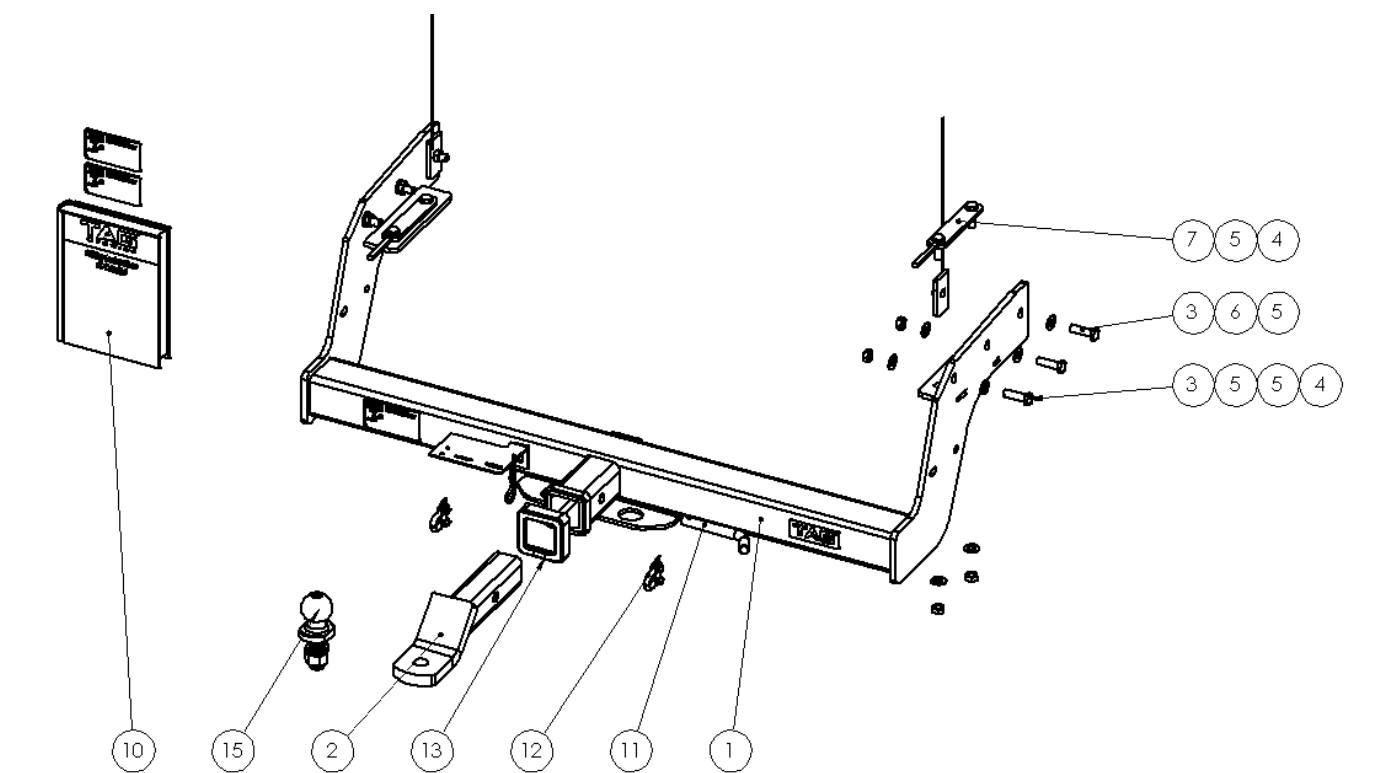
TOOLS REQUIRED

- Spanners
- Sockets
- Air Saw or similar.
- Trim Removal Tool
- Torque Wrench

IN THIS GUIDE

- Fitment Instructions
- Torque Settings
- Warranty Info

Towbar Assembly



Item No.	Description	QTY.	Item No.	Description	QTY.
1	Towbar Assembly	1	9	TAG STICKER - 100 X 40	1
2	L4045 TBM	1	10	Fitting Instruction	1
3	M12 x 1.25 x 40 Bolt	6	11	Class 4 Pin & Clip	1
4	M12 x 1.25 Nut	8	12	D-Shackle - 10mm. 1000kg	2
5	M12 Flat Washer	14	13	TAG Hitch Cover	1
6	Nut plate on wire	2	15	50mm TAG Tow Ball with Flat edge	1
7	Internal Chassis Bolt Plate	2			
8	TAG Compliance Sticker	3			

Important Information



Warning:

- This product is for towing purposes only and must only be loaded as shown in your vehicle Owner's Manual.
- This towbar is NOT to be drilled, cut, welded, or modified in any way.
- Check behind chassis rail and body panels before drilling to ensure no hazards are present.
- All load ratings shown are under the assumption your trailer has a functional braking system installed.
- When installed in positions other than the one depicted in these instructions the Tow Ball Mount may interfere or obstruct certain features of your vehicle (tailgate opening, Chassis clearance, etc.)

General:

- Before fitting this towbar read fitting instructions and check installation hardware is correct.
- Check that the towbar is suitable for the vehicle and be wary of any changes to the vehicle design that may conflict with the fitting of this towbar. (Tray, Canopy, Suspension etc.)
- After drilling, blow any filings clear, remove any burrs and treat exposed metal with a rust inhibitor.
- The high tensile fasteners supplied with this product are an integral feature to achieving the specified rating, if replacement is required ensure that fasteners of the same grade (8.8) & quality are used. Contact an authorised TAG distributor or the TAG fitment center - (07) 3208 3022 - if further information is required.

Towbar Maintenance and Care:

It is recommended, when not in use, that the Tow Ball Mount assembly and class 4 Pin and Clip is stored inside the car away from moisture to prevent standing water from forming rust. Inspect to ensure, on regular basis, fasteners are torqued to the specifications below and in good condition.

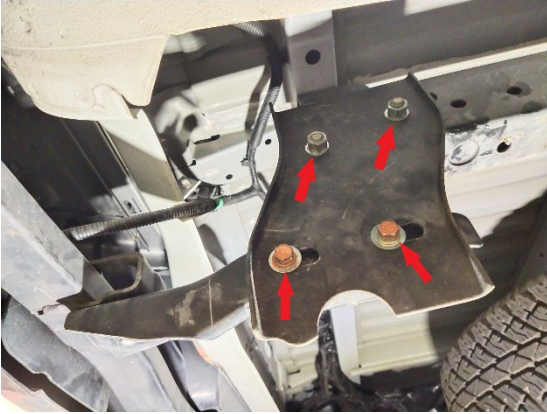
Ensure that the fitting instructions are read and understood prior to fitment, Following the fitment place these instructions in the vehicle's glovebox after installation is completed.

Metric Bolt Torque Settings

Diameter	Pitch	Grade	Torque	Unit		Diameter	Pitch	Grade	Torque	Unit
M8	1.25	8.8	29	Nm		M12	1.25	10.9	125	Nm
M10	1.25	8.8	57	Nm		M12	1.50	10.9	105	Nm
M10	1.50	8.8	44	Nm		M14	1.25	10.9	195	Nm
M12	1.25	8.8	101	Nm		M14	1.50	10.9	165	Nm
M12	1.50	8.8	97	Nm		M16	1.25	10.9	295	Nm
M12	1.75	8.8	77	Nm		M16	1.50	10.9	250	Nm
M14	2.00	8.8	122	Nm		50mm Tow Ball	N/A	N/A	300	Nm
M16	2.00	8.8	190	Nm		70mm Tow Ball	N/A	N/A	750	Nm

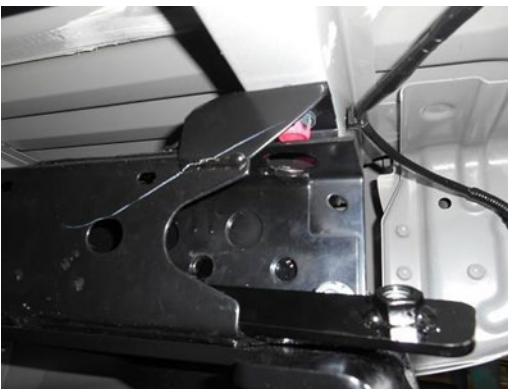
Step 1: Remove Rear Bumper

- a. Disconnect the bumper harness on each side of the vehicle. Remove bumper from the chassis drop-down bracket on each side via 2x M8 bolts per side. **Retain the M8 bumper bar fasteners.**
- b. Remove and discard the remaining bumper retaining bracket and fasteners from the chassis.



Step 2: Fit Towbar

- a. Insert the bolt plates into the chassis to align with holes in bottom side.
- b. Lift the towbar up to the chassis and loosely secure to the bottom of the rail and previously inserted bolt plate with M12x 1.25 nuts and flat washers.
- c. Insert M12x 1.25 nut plate on wire into chassis and align with front-most side hole. Fasten loosely with M12x 1.25x 40 bolt and flat washer.
- d. Insert the remaining M12x 1.25x 40 bolts with flat washers into the 2x rear most side holes of chassis. Loosely secure with flat washers and nuts on the inside.
- e. Repeat steps a-d on opposite side.
- f. Tighten all bolts to the torque specification on page 3.



Installation Instructions



Step 3: Fit Bumper

- a. Lift bumper up to the outside of the towbar end plates and align with holes. Insert original M8 bolts and loosely fasten. Repeat on opposite side.
- b. Align bumper to body and tighten all bolts.
- c. Reconnect the bumper bar harness.

Step 4: Complete Towbar & Apply Spare Compliance Label

- a. Attach TAG Hitch cover with rubber mallet carefully to prevent breaking.
- b. Attach Tow ball to Ball Mount and slide into receiver. Secure with Pull pin and Clip if you are going to tow straight away. Alternatively, secure the Ball Mount in a safe place inside your vehicle.
- c. Apply one of the compliance labels to the pillar of the driver's door. Leave the remaining label and the fitting instructions in the vehicle handbook.



TAG Warranty Statement



SWD warrants your TAG Towbar for its full product life under the following conditions:

- You can show proof of purchase.
- The towbar has been correctly installed by a suitably qualified installer.
- The towbar has not been modified or abused in any way and has only been used for the purpose intended.
- The towbar was not fitted second hand to your vehicle.

The extent of this warranty includes materials and workmanship used in the manufacture of the towbar and is to the equivalent value of current, full replacement cost.

Nothing stated or implied in this warranty limits in any way, the statutory rights that you may have.

To make a claim visit the original installer in the first instance or, if you are unable to or are not satisfied with their help, then contact us direct by phone on 1300 669122 or visit www.swd.com.au.