

Fitting Instructions



SKU

T4G839

PRODUCT

**TAG Heavy Duty Towbar
for GWM Cannon (01/2021 - On)**

SPECIFICATIONS

- Towbar Class: CL 4 Heavy Duty
- Towing Capacity: 3000kg
- Tow ball Weight: 300kg
- Approx. Fitment Time: 30 minutes



Scan for latest
version of these
instructions

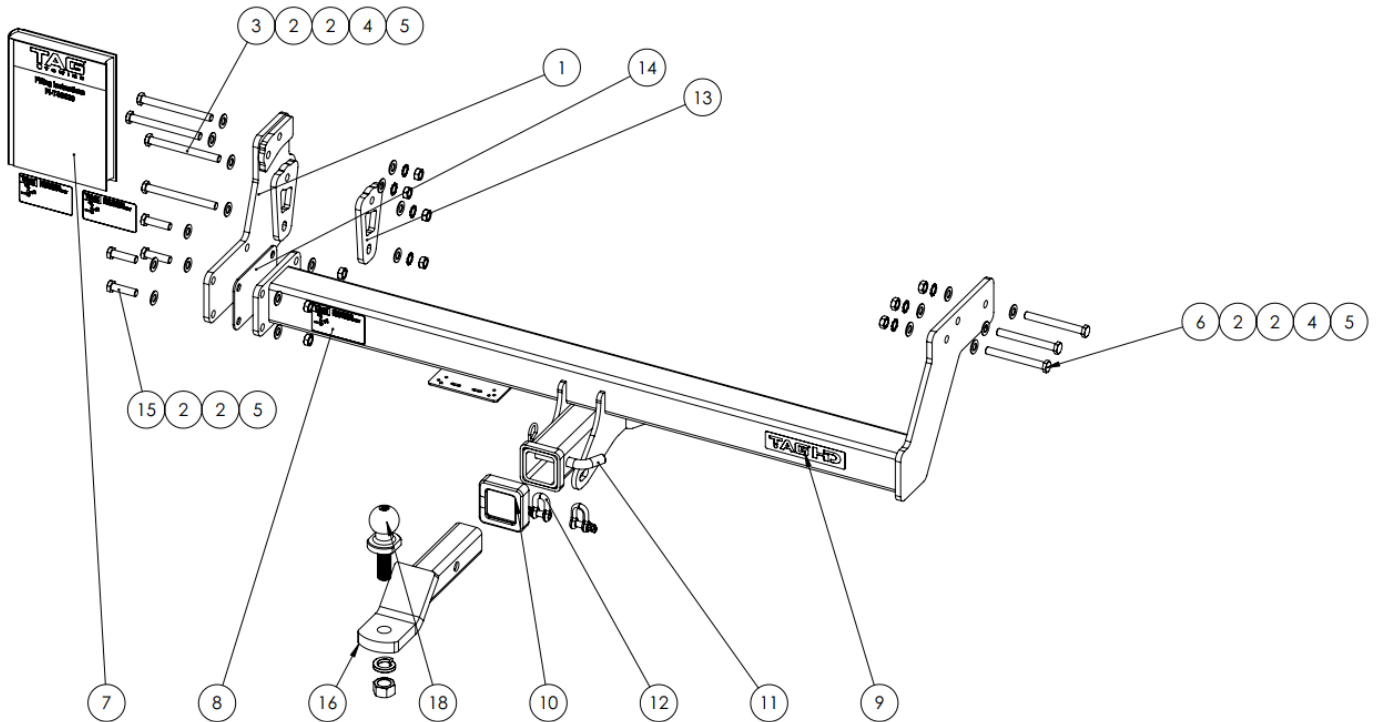
TOOLS REQUIRED

- Spanners
- Sockets
- Air Saw or similar.
- Trim Removal Tool
- Torque Wrench

IN THIS GUIDE

- Fitment Instructions
- Torque Settings
- Warranty Info

Towbar Assembly



ITEM NO.	DESCRIPTION	QTY.	ITEM NO.	DESCRIPTION	QTY.
1	End Plate Assembly Passenger Side	1	10	TAG Hitch Cover	1
2	M12 Flat Washer Zinc Clear	22	11	Class 4 Pin & Clip	1
3	M12 x 1.5 x 130 Hex Bolt	4	12	D-Shackle – 10mm. 1000kg	2
4	M12 Shaker-proof Washer	7	13	End Plate Doubler Lower PS	1
5	M12 x 1.5 Nut	11	14	End Plate Spacer	1
6	M12 x 1.5 x 110 Hex Bolt	3	15	M12 x 1.5 x45 Hex Set Screw	4
7	Fitting Instructions	1	16	L4045 Powder Coated TBM	1
8	TAG Compliance Sticker	3	17	T4G839 Welded Assembly	1
9	TAG HD Sticker	1	18	50mm TAG Tow Ball - Chrome	1

Important Information



Warning:

- This product is for towing purposes only and must only be loaded as shown in your vehicle Owner's Manual.
- This towbar is NOT to be drilled, cut, welded, or modified in any way.
- Check behind chassis rail and body panels before drilling to ensure no hazards are present.
- All load ratings shown are under the assumption your trailer has a functional braking system installed.
- When installed in positions other than the one depicted in these instructions the Tow Ball Mount may interfere or obstruct certain features of your vehicle (tailgate opening, Chassis clearance, etc.)

General:

- Before fitting this towbar read fitting instructions and check installation hardware is correct.
- Check that the towbar is suitable for the vehicle and be wary of any changes to the vehicle design that may conflict with the fitting of this towbar. (Tray, Canopy, Suspension etc.)
- After drilling, blow any filings clear, remove any burrs and treat exposed metal with a rust inhibitor.
- The high tensile fasteners supplied with this product are an integral feature to achieving the specified rating, if replacement is required ensure that fasteners of the same grade (8.8) & quality are used. Contact an authorised TAG distributor or the TAG fitment center - (07) 3208 3022 - if further information is required.

Towbar Maintenance and Care:

It is recommended, when not in use, that the Tow Ball Mount assembly and class 4 Pin and Clip is stored inside the car away from moisture to prevent standing water from forming rust. Inspect to ensure, on regular basis, fasteners are torqued to the specifications below and in good condition.

Ensure that the fitting instructions are read and understood prior to fitment, Following the fitment place these instructions in the vehicle's glovebox after installation is completed.

Metric Bolt Torque Settings

Diameter	Pitch	Grade	Torque	Unit		Diameter	Pitch	Grade	Torque	Unit
M8	1.25	8.8	29	Nm		M12	1.25	10.9	125	Nm
M10	1.25	8.8	57	Nm		M12	1.50	10.9	105	Nm
M10	1.50	8.8	44	Nm		M14	1.25	10.9	195	Nm
M12	1.25	8.8	101	Nm		M14	1.50	10.9	165	Nm
M12	1.50	8.8	97	Nm		M16	1.25	10.9	295	Nm
M12	1.75	8.8	77	Nm		M16	1.50	10.9	250	Nm
M14	2.00	8.8	122	Nm		50mm Tow Ball	N/A	N/A	300	Nm
M16	2.00	8.8	190	Nm		70mm Tow Ball	N/A	N/A	750	Nm

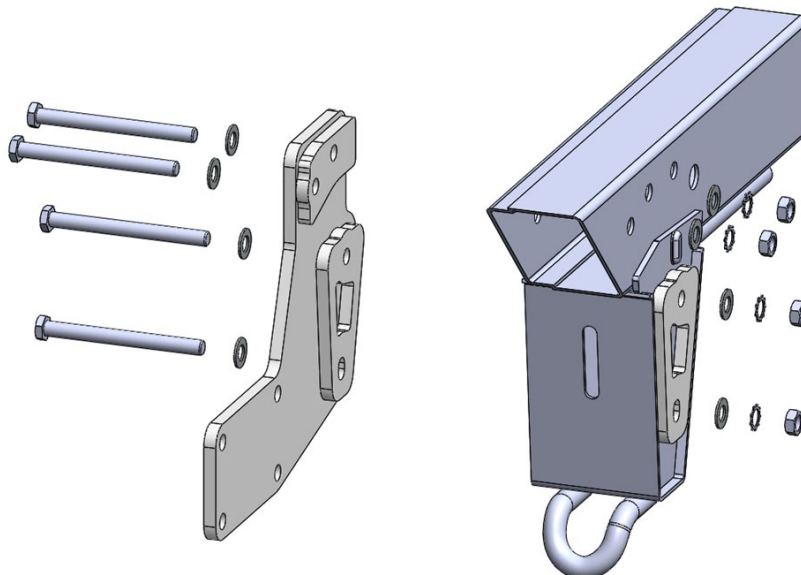
Step 1: Fit Towbar

1. Lower and remove the spare wheel for easier access
2. On the LHS chassis rail, remove & discard 2x Bolts & 2x Nuts from the chassis.



NOTE: The bumper will remain bolted to the vehicle chassis throughout the fitment.

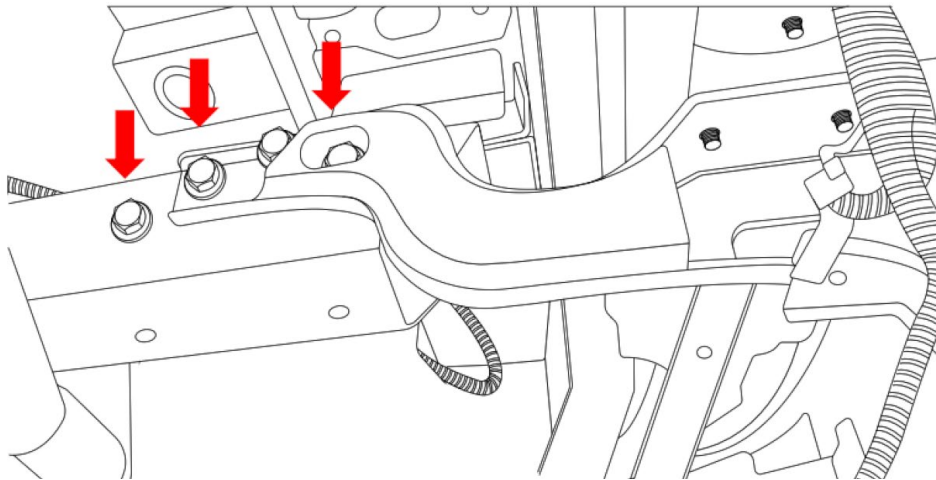
3. On the LHS, fit 2x M12 x 130 bolts, 4x M12 Washers, 2x M12 Shaker proof washers & 2x M12 Nuts through the horizontal chassis rail. Leave loose.
4. Fit 2x M12 x 130 bolts, 4x M12 Washers, 2x M12 Shaker proof washers, the PS End Plate Doubler & 2x M12 Nuts, through the vertical chassis member. Leave loose.



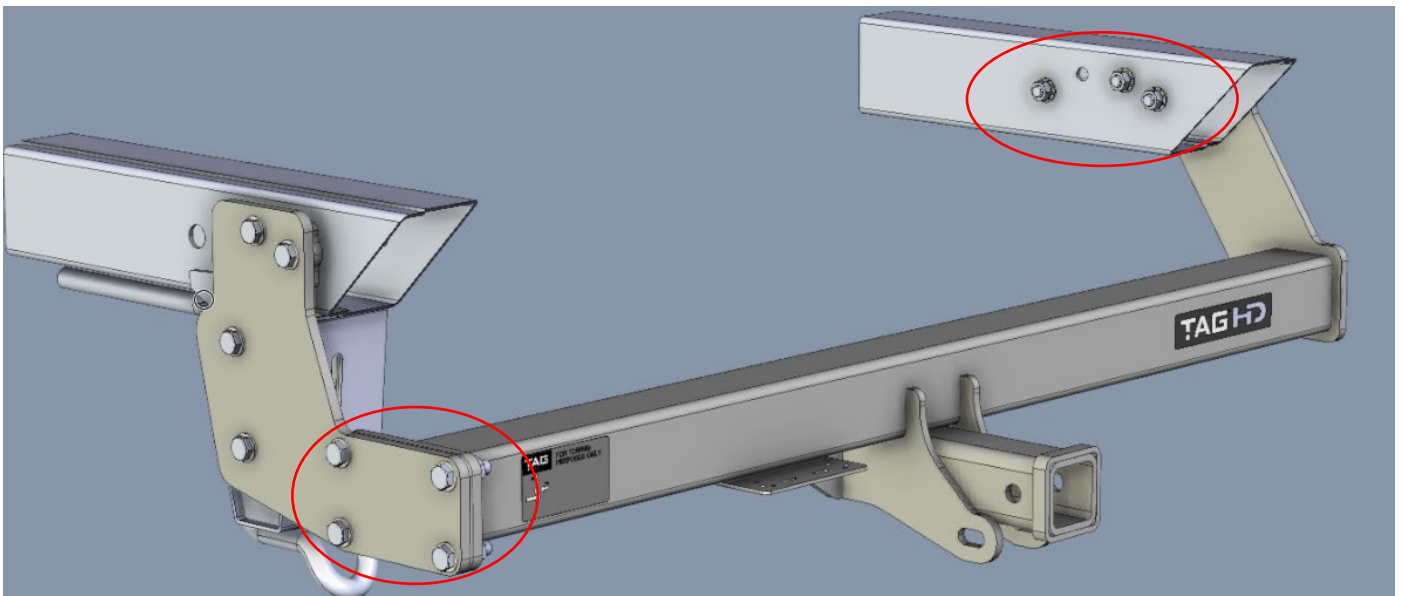
Installation Instructions



5. On the RHS Chassis, remove & discard 3x M12 Bolts & 3x Nuts.



6. Offer the T4G839 welded assembly to the vehicle. Loosely secure the RHS using 3x M12 x 110 Bolts, 6x M12 Flat Washers, 3x M12 Shaker proof washers & 3x M12 nuts.
7. Loosely secure the LHS End Cap of the bar to the LHS End Plate assembly using 4x M12 x 45 Bolts, 8x M12 Flat Washers, 4x M12 Shaker-proof washers & 4x M12 nuts. Use the supplied 3mm spacer plate if required.



8. Tighten all bolts to their specified torque (page 3) starting from the chassis bolts.
9. Reinstall the spare wheel.

Installation Instructions



Step 2: Complete Towbar & Apply Spare Compliance Label

- a. Attach TAG Hitch cover with rubber mallet carefully to prevent breaking.
- a. Attach Tow ball to Ball Mount and slide into receiver. Secure with Pull pin and Clip if you are going to tow straight away. Alternatively, secure the Ball Mount in a safe place inside your vehicle.
- b. Apply one of the compliance labels to the pillar of the driver's door. Leave the remaining label and the fitting instructions in the vehicle handbook.



TAG Warranty Statement



SWD warrants your TAG Towbar for its full product life under the following conditions:

- You can show proof of purchase.
- The towbar has been correctly installed by a suitably qualified installer.
- The towbar has not been modified or abused in any way and has only been used for the purpose intended.
- The towbar was not fitted second hand to your vehicle.

The extent of this warranty includes materials and workmanship used in the manufacture of the towbar and is to the equivalent value of current, full replacement cost.

Nothing stated or implied in this warranty limits in any way, the statutory rights that you may have.

To make a claim visit the original installer in the first instance or, if you are unable to or are not satisfied with their help, then contact us direct by phone on 1300 669122 or visit www.swd.com.au.