
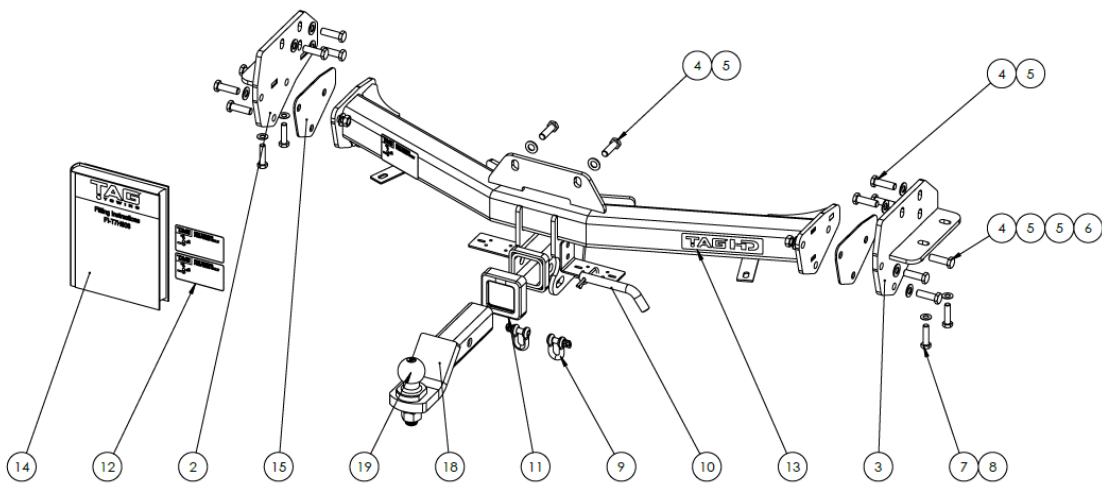


# FITTING INSTRUCTIONS



Isuzu MUX MY21 - T7H808

<b>Max Towing Capacity:</b> 3500kg	<b>Towbar Weight:</b> 23kg
<b>Max Ball Load:</b> 350kg	<b>Wiring Harness Part #:</b>
 <b>Tools Required:</b> Spanners, Sockets, Screwdriver, Torque wrench	



Item No.	Description	QTY.	Item No.	Description	QTY.
1	Welded Assembly for TXR832	1	11	TAG Hitch Cover	1
2	End Plate Assembly	1	12	TAG Compliance Sticker	3
3	End Plate Assembly DS	1	13	TAG HD Sticker 150 x 33mm	1
4	M12 x 1.25 x 40 Hex Bolt	14	14	Fitting Instruction	1
5	M12 Flat Washer Zinc Clear	20	15	TXR832 3mm Spacer Plate	2
6	M12x1.25 Nut	6	16	L4045S Ball Mount	1
7	M10 x 1.25 x 40 Set Screw	4	17	L4045S Shank	1
8	M10 Flat Washer	4	18	L4045 Tongue	1
9	D-Shackle	2	19	50mm TAG Tow Ball	1
10	Class 4 Pin & Clip	1			

# FITTING INSTRUCTIONS



Isuzu MUX MY21 - T7H808

**ENSURE THAT THE FITTING INSTRUCTIONS ARE READ AND UNDERSTOOD PRIOR TO FITMENT  
PLACE THESE INSTRUCTIONS IN THE VEHICLE'S GLOVEBOX AFTER INSTALLATION IS COMPLETED**

## Warning:

- This product is for towing purposes only and must only be loaded as shown in your vehicle Owner's Manual.
- This towbar is NOT to be drilled, cut, welded, or modified in any way.
- All load ratings shown are under the assumption your trailer has a functional braking system installed
- When installed in positions other than the one depicted in these instructions the Tow Ball Mount may interfere or obstruct certain features of your vehicle (tailgate opening, Chassis clearance, etc.)

## General:

- Before fitting this towbar check installation hardware is included and correct.
- Check that the towbar is suitable for the vehicle make, model and year then make sure any changes to the vehicle design do not conflict with the fitting of this towbar. (Tray, Canopy, Suspension etc.)
- After drilling, blow any filings clear, remove any swarf and treat exposed metal with a rust inhibitor.
- Check behind chassis rail and body panels before drilling to ensure no hazards are present (fuel lines, electrical wires etc.)
- If this vehicle requires a bumper cut out, please check to make sure that your measurements are correct and clear before cutting any panels as some bumper profiles can change. If you are not sure, then please ask your towbar supplier
- The high tensile fasteners supplied with this product are an integral feature to achieving the specified rating, if replacement is required ensure that fasteners of the same grade (8.8) & quality are used. Contact an authorised TAG distributor or the TAG fitment centre - (07) 3208 3022 - if further information is required.

## Towbar Maintenance and Care:

It is recommended, when not in use, the Tow Ball Mount assembly and class 4 Pin and Clip is stored inside the car away from moisture to prevent standing water from forming rust. Inspect to ensure, on regular basis, fasteners are torqued to the specifications below and in good condition.

Metric Bolt Torque Settings										
Diameter	Pitch	Grade	Torque	Unit		Diameter	Pitch	Grade	Torque	Unit
M8	1.25	8.8	29	Nm		M12	1.50	8.8	97	Nm
M10	1.25	8.8	57	Nm		M12	1.75	8.8	77	Nm
M10	1.50	8.8	44	Nm		M14	2.00	8.8	122	Nm
M12	1.25	8.8	101	Nm		M16	2.00	8.8	190	Nm
Imperial Bolt Torque Settings										
3/8"	UNC	8	44.75	Nm		1/2"	UNC	8	108.5	Nm

# FITTING INSTRUCTIONS



Isuzu MUX MY21 - T7H808

## Step 1 Remove Bumper, Impact Beam & Shipping Hook

### Instructions

- Remove 5x hex head screws fastening the mudflap to each wheel arch.
- Remove the plastic scrivet at the bottom of the bumper directly behind each wheel arch.
- Remove the plastic scrivets from the rear most underside of the bumper.
- Remove 1x hex head screw from either side of the tail gate below the taillight.
- Beginning at one wheel arch, carefully peel the bumper away from the body. Repeat on other side.
- Disconnect the bumper harness and set bumper aside.
- Remove the shipping hook from the chassis and discard bolts & hook.



## Step 2 Fit Towbar, Refit Componentry

### Instructions

- Fasten PS endplate assembly to inside of chassis using 3x M12x 1.25x 40 bolts & flat washers.
- Insert 2x M10x 1.25x 40 bolts into bottom of chassis. Leave all bolts loose.
- Repeat on DS
- Lift main bar assembly up to endplates & insert 3x M12x 1.25x 40 bolts with washers & nuts per side.
- Loosely fasten the top centre of the main bar to the chassis with 2x M12 x1.25x 40 bolts.
- Tighten all bolts.
- Refit Componentry using step 1 in reverse order

# FITTING INSTRUCTIONS



Isuzu MUX MY21 - T7H808

## Step 3 | Fit Ball Mount and Apply Door Sticker

### Instructions

- a. Attach plastic hitch surround to receiver.
- b. Insert ball mount into hitch receiver and secure with the pull pin and R-clip.
- c. Apply one of the compliance labels to the pillar of the driver's door.
- d. Leave the remaining label & the fitting instructions in the vehicle handbook.



## WARRANTY STATEMENT

The manufacturer of TAG branded products, warrants your TAG Towbar for its full product life under the following conditions:

- You can show proof of purchase.
- The towbar has been correctly installed by a suitably qualified installer.
- The towbar has not been modified or abused in any way and has only been used for the purpose intended.
- The towbar was not fitted second hand to your vehicle.

The extent of this warranty includes materials and workmanship used in the manufacture of the towbar and is to the equivalent value of current, full replacement cost. Nothing stated or implied in this warranty limits in any way, the statutory rights that you may have.

To make a claim visit the original installer in the first instance or, if you are unable to or are not satisfied with their help, then contact us directly by email at [warranty@tagtowing.com](mailto:warranty@tagtowing.com)