

Fitting Instructions



SKU

T4C284

PRODUCT

**TAG Heavy Duty Towbar
for Mitsubishi Pajero NM-NX
(05/2000 - 06/2023)**

SPECIFICATIONS

- Towbar Class: CL 4 Heavy Duty
- Towing Capacity: 3000kg
- Tow ball Weight: 250kg
- Approx. Fitment Time: 60 Minutes



Scan for latest
version of these
instructions

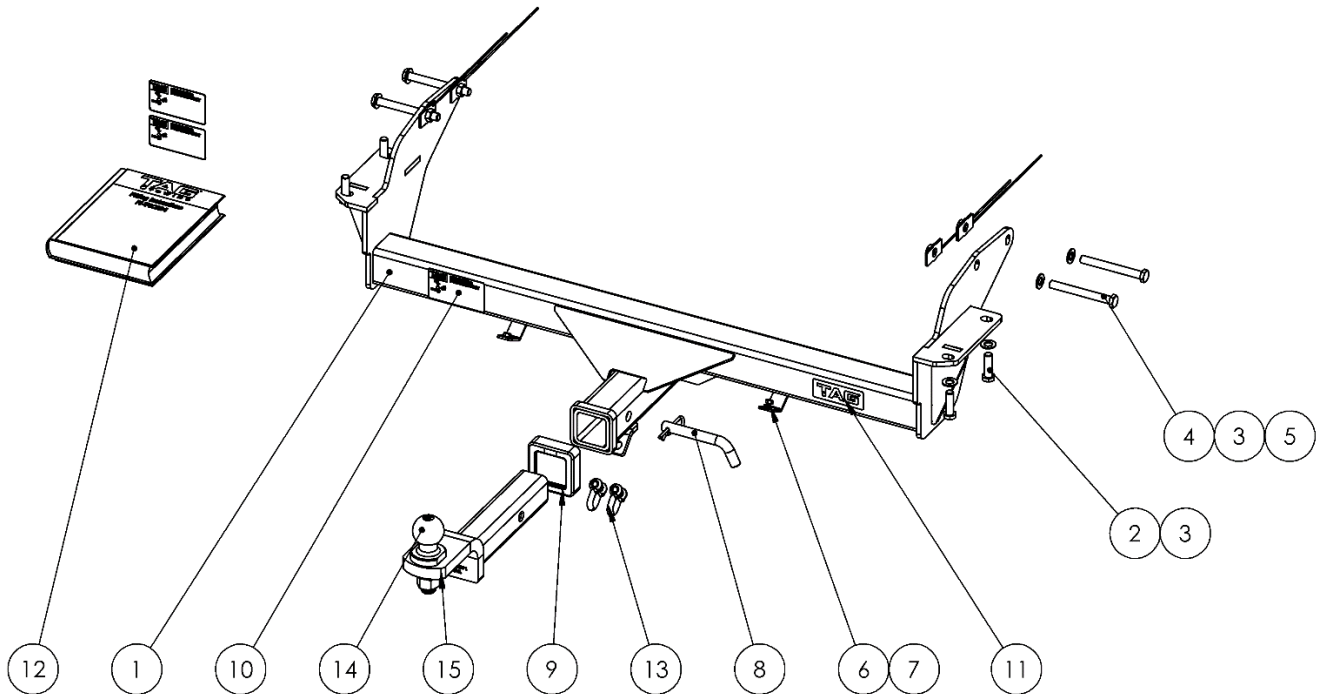
TOOLS REQUIRED

- Spanners
- Sockets
- Air Saw or similar.
- Trim Removal Tool
- Torque Wrench

IN THIS GUIDE

- Fitment Instructions
- Torque Settings
- Warranty Info

Towbar Assembly



ITEM NO.	DESCRIPTION	QTY.	ITEM NO.	DESCRIPTION	QTY.
1	Welded Assembly	1	9	TAG Hitch Cover	1
2	M12 x 1.25 x 40 Bolt	4	10	TAG Compliance Sticker	3
3	M12 Flat Washer	8	11	TAG STICKER	1
4	M12 x 1.25 x 110 Bolt	4	12	Fitting Instruction	1
5	Top Plate with M12 Nut and Wire	4	13	D-Shackle - 10mm. 1000kg,	2
6	M6 Shakeproof Washer	2	14	50mm TAG Tow Ball Chrome	1
7	M6 x 1.0 Nut	2	15	L4240 Ball Mount	1
8	Class 4 Pin & Clip	1			

Important Information



**ENSURE THAT THE FITTING INSTRUCTIONS ARE READ AND UNDERSTOOD PRIOR TO FITMENT
PLACE THESE INSTRUCTIONS IN THE VEHICLE'S GLOVEBOX AFTER INSTALLATION IS COMPLETED**

Warning:

- This product is for towing purposes only and must only be loaded as shown in your vehicle Owner's Manual.
- This towbar is NOT to be drilled, cut, welded, or modified in any way.
- All load ratings shown are under the assumption your trailer has a functional braking system.
- When installed in positions other than the one shown in these instructions the Tow Ball/ Tow Ball Mount may interfere or obstruct certain features of your vehicle (tailgate opening, Chassis clearance, Sensor Operation, etc.)

General:

- Before fitting this towbar check installation hardware is included and correct.
- Check that the towbar is suitable for the vehicle make, model and year then make sure any changes to the vehicle design do not conflict with the fitting of this towbar. (Tray, Canopy, Suspension etc.)
- Check behind chassis rail and body panels before drilling to ensure no hazards are present (fuel lines, electrical wires etc.)
- After drilling, blow any filings clear, remove any swarf in and around the area and treat exposed metal with a suitable rust inhibitor.
- If this vehicle requires a bumper cut out, please check to make sure that your measurements are correct and clear before cutting any panels as some bumper profiles can change. If you are not sure, please ask your towbar supplier.
- To ensure the towbar is safe and secure, it is the owners' responsibility that each fastener is torqued **at 1000km intervals**. If for any reason, a fastener is not suitable for re-torquing, it is the owners' responsibility to replace it to ensure it is of the same grade (8.8) and class as the original. Failure to do so will diminish the towing capacity of the towbar and may result in the deterioration of the chassis of the vehicle. Contact an authorised TAG distributor or the TAG fitment centre if further information is required.

Towbar Maintenance and Care:

It is recommended, when not in use, the Tow Ball Mount assembly and class 4 Pin and Clip is stored inside the car away from moisture to prevent standing water from forming rust. Inspect to ensure, on regular basis, fasteners are torqued to the specifications below and in good condition.

<i>Metric Bolt Torque Settings</i>										
Diameter	Pitch	Grade	Torque	Unit		Diameter	Pitch	Grade	Torque	Unit
M8	1.25	8.8	29	Nm		M12	1.25	10.9	125	Nm
M10	1.25	8.8	57	Nm		M12	1.50	10.9	105	Nm
M10	1.50	8.8	44	Nm		M14	1.25	10.9	195	Nm
M12	1.25	8.8	101	Nm		M14	1.50	10.9	165	Nm
M12	1.50	8.8	97	Nm		M16	1.25	10.9	295	Nm
M12	1.75	8.8	77	Nm		M16	1.50	10.9	250	Nm
M14	2.00	8.8	122	Nm		50mm Tow Ball	N/A	N/A	300	Nm
M16	2.00	8.8	190	Nm		70mm Tow Ball	N/A	N/A	750	Nm

Installation Instructions



Step 1: Remove Shipping Hook and Unhook Rear Muffler

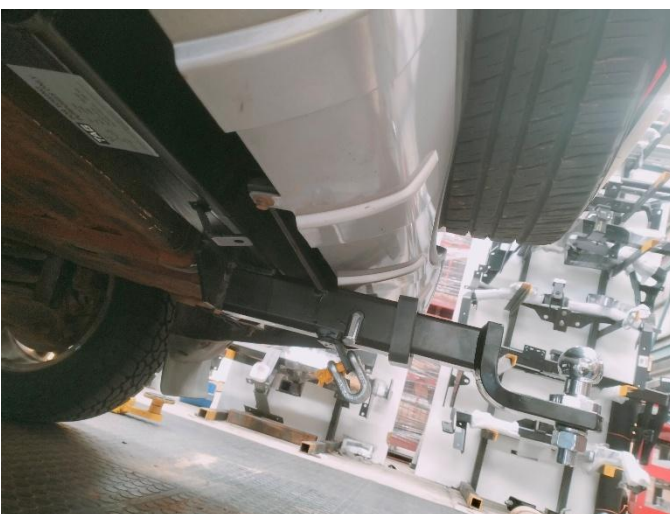
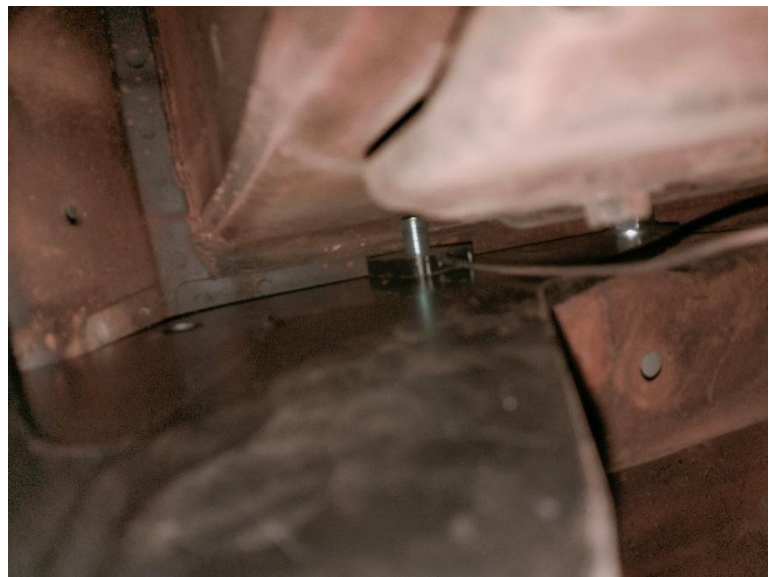
Note: Some vehicles may have a climate control unit fitted on the driver's side, it will need to be lowered to aid with access to the horizontal chassis bolts.

- a. Remove 4x M6 x 20 bolts from the climate control unit and carefully lower it. Unclip the air conditioning and heater hoses from the unit to aid in lowering.
- b. Remove the shipping hook frame from the vehicle via 8x M12 bolts. Discard the frame and all fasteners.
- c. Lower the rear muffler to help with access if required.



Step 2: Fit Towbar

- a. Insert the M12x 1.25x 110 bolts with flat washers into the horizontal holes of the chassis from the outside so the ends are flush to the chassis.
- b. Lift the towbar up to the bottom of the chassis and push the M12x 110 bolts through to secure the bar in place.
- c. Loosely secure the M12x 110 bolts with the M12 nut plates on wire between the inside face of the chassis and the depressed body section.
- d. Insert the M12x 1.25x 40 bolts into the chassis base plates of the towbar and secure loosely.
- e. Tighten the bolts vertical chassis bolts according to the torque specification on page 3.
- f. Tighten the bolts horizontal chassis bolts according to the torque specification on page 3.
- g. Refit the climate control unit.
- h. Return the muffler to the hangers if required.

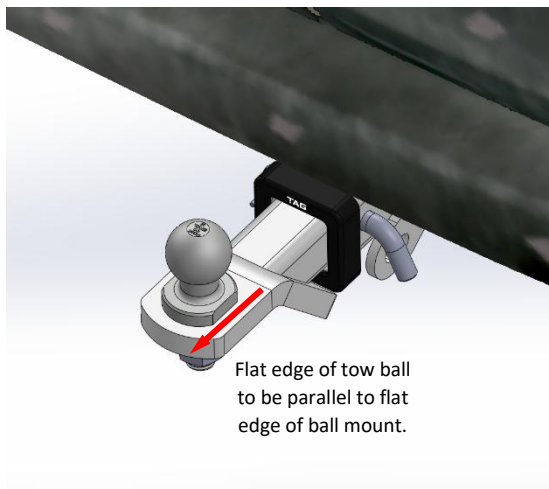


Installation Instructions



Step 3: Complete Towbar & Apply Spare Compliance Label

- a. Attach TAG Hitch cover with rubber mallet carefully to prevent breaking.
- b. Attach the tow ball to the ball mount. The flat side of the tow ball **MUST BE** parallel to the outer edge of the ball mount. **Tighten the tow ball to 300Nm.**
- c. Insert the Tow Ball Mount into the receiver and secure with the Pull pin and R-Clip. When not in use, secure the Ball Mount in a safe place inside your vehicle.
- d. Apply one of the compliance labels to the pillar of the driver's door. Place the remaining label and the fitting instructions in the vehicle handbook.



TAG Warranty Statement



SWD warrants your TAG Towbar for its full product life under the following conditions:

- You can show proof of purchase.
- The towbar has been correctly installed by a suitably qualified installer.
- The towbar has not been modified or abused in any way and has only been used for the purpose intended.
- The towbar was not fitted second hand to your vehicle.

The extent of this warranty includes materials and workmanship used in the manufacture of the towbar and is to the equivalent value of current, full replacement cost.

Nothing stated or implied in this warranty limits in any way, the statutory rights that you may have.

To make a claim visit the original installer in the first instance or, if you are unable to or are not satisfied with their help, then contact us direct by phone on 1300 669122 or visit www.swd.com.au.