

Fitting Instructions



SKU

TXR814

PRODUCT

TAG Extreme Recovery Towbar for Jeep Gladiator Ute (Cab Chassis) (JT) (01/20-on)

SPECIFICATIONS

- Towbar Class: CL 7 Xtreme Recovery
- Towing Capacity: 2721kg (6000lbs)
- Tow ball Weight: 272kg (600 lbs)
- Recovery Point WLL: 4500kg
- Approx. Fitment Time: 60 Minutes



Scan for latest version of these instructions

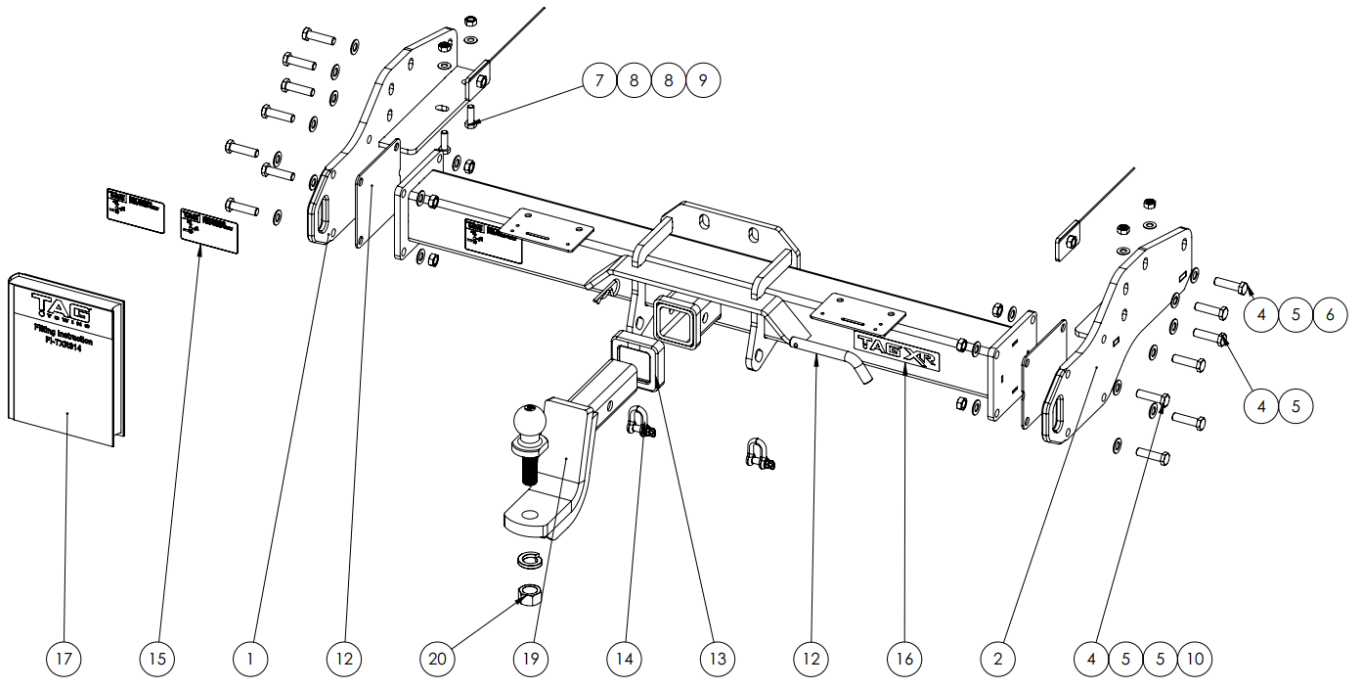
TOOLS REQUIRED

- Spanners
- Sockets
- Air Saw or similar.
- Trim Removal Tool
- Torque Wrench

IN THIS GUIDE

- Fitment Instructions
- Torque Settings
- Warranty Info

Towbar Assembly



ITEM No..	DESCRIPTION	QTY.	ITEM No.	DESCRIPTION	QTY
1	End Plate PS TXR814	1	11	End Plate Spacer 3mm	2
2	End Plate DS TXR814	1	12	Class 4 Pin & Clip	1
3	Welded Assembly TXR814	1	13	TAG Hitch Cover	1
4	M12 x 1.25 x 45 Bolt	12	14	D-Shackle - 10mm. 1000kg,	2
5	M12 Flat Washer	28	15	TAG Compliance Label	3
6	Plate w/ wire & M12x1.25 nut	2	16	TAG XR Label 150 x 33mm	1
7	M10 X 30 1.25 Bolt	4	17	TXR814 Fitting Instruction	1
8	M10 Flat Washer	4	18	TAG WLL Label (4500kg)	1
9	M10 x 1.25 Nut	4	19	Ball Mount - L4171	1
10	M12x1.25 Nut	8	20	50mm TAG Tow Ball 3.5t	1

Important Information



**ENSURE THAT THE FITTING INSTRUCTIONS ARE READ AND UNDERSTOOD PRIOR TO FITMENT
PLACE THESE INSTRUCTIONS IN THE VEHICLE'S GLOVEBOX AFTER INSTALLATION IS COMPLETED**

Warning:

- This product is for towing purposes only and must only be loaded as shown in your vehicle Owner's Manual.
- This towbar is NOT to be drilled, cut, welded, or modified in any way.
- All load ratings shown are under the assumption your trailer has a functional braking system.
- When installed in positions other than the one shown in these instructions the Tow Ball/ Tow Ball Mount may interfere or obstruct certain features of your vehicle (tailgate opening, Chassis clearance, Sensor Operation, etc.)

General:

- Before fitting this towbar check installation hardware is included and correct.
- Check that the towbar is suitable for the vehicle make, model and year then make sure any changes to the vehicle design do not conflict with the fitting of this towbar. (Tray, Canopy, Suspension etc.)
- Check behind chassis rail and body panels before drilling to ensure no hazards are present (fuel lines, electrical wires etc.)
- After drilling, blow any filings clear, remove any swarf in and around the area and treat exposed metal with a suitable rust inhibitor.
- If this vehicle requires a bumper cut out, please check to make sure that your measurements are correct and clear before cutting any panels as some bumper profiles can change. If you are not sure, please ask your towbar supplier.
- To ensure the towbar is safe and secure, it is the owners' responsibility that each fastener is torqued **at 1000km intervals**. If for any reason, a fastener is not suitable for re-torquing, it is the owners' responsibility to replace it to ensure it is of the same grade (8.8) and class as the original. Failure to do so will diminish the towing capacity of the towbar and may result in the deterioration of the chassis of the vehicle. Contact an authorised TAG distributor or the TAG fitment centre if further information is required.

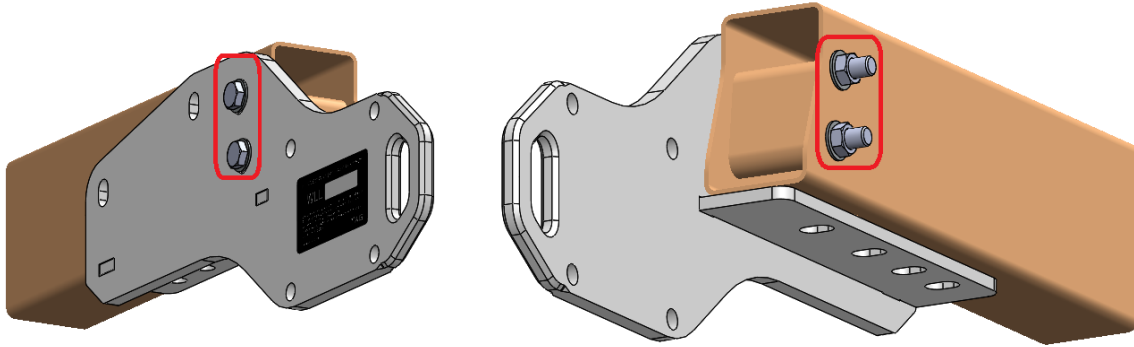
Towbar Maintenance and Care:

It is recommended, when not in use, the Tow Ball Mount assembly and class 4 Pin and Clip is stored inside the car away from moisture to prevent standing water from forming rust. Inspect to ensure, on regular basis, fasteners are torqued to the specifications below and in good condition.

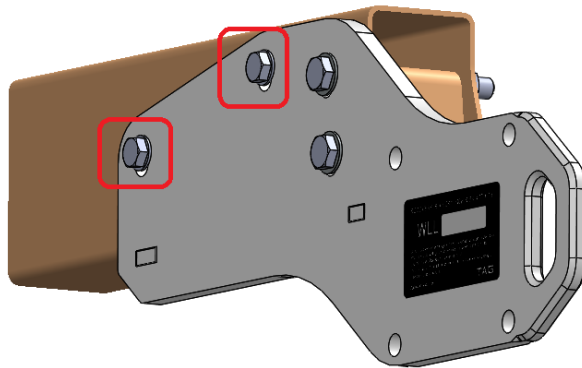
<i>Metric Bolt Torque Settings</i>										
Diameter	Pitch	Grade	Torque	Unit		Diameter	Pitch	Grade	Torque	Unit
M8	1.25	8.8	29	Nm		M12	1.25	10.9	125	Nm
M10	1.25	8.8	57	Nm		M12	1.50	10.9	105	Nm
M10	1.50	8.8	44	Nm		M14	1.25	10.9	195	Nm
M12	1.25	8.8	101	Nm		M14	1.50	10.9	165	Nm
M12	1.50	8.8	97	Nm		M16	1.25	10.9	295	Nm
M12	1.75	8.8	77	Nm		M16	1.50	10.9	250	Nm
M14	2.00	8.8	122	Nm		50mm Tow Ball	N/A	N/A	300	Nm
M16	2.00	8.8	190	Nm		70mm Tow Ball	N/A	N/A	750	Nm

Step 1: Fit Towbar

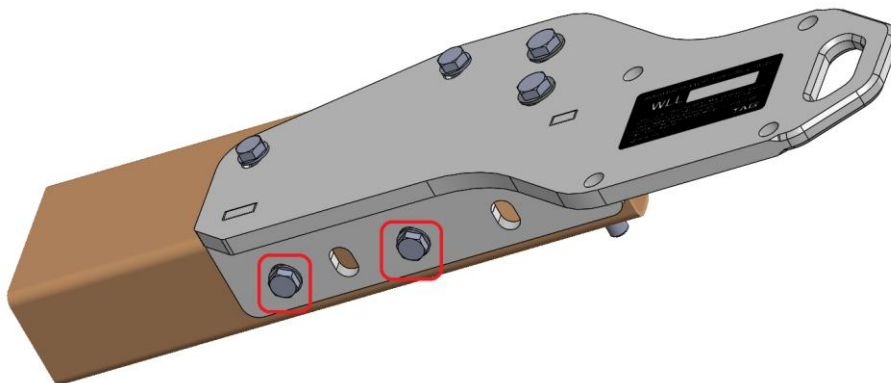
- a. On the rear passenger side chassis rail, lift up the recovery end plate and loosely secure using 2x M12x1.25x110 bolts, 4x M12 Washers & 2x M12x1.25 Nuts on the two rear most holes.



- b. Insert and loosely screw in 2x M10x1.25x30 & 2x M10 Flat Washers into the captive nuts through the two remaining side holes.



- c. On the underside of the chassis, loosely screw in 2x M10x1.25x30 bolts & 2x M10 Flat Washers to captive nuts on the chassis. 2 of the slots on the end plate should line up with 2 captive nuts.



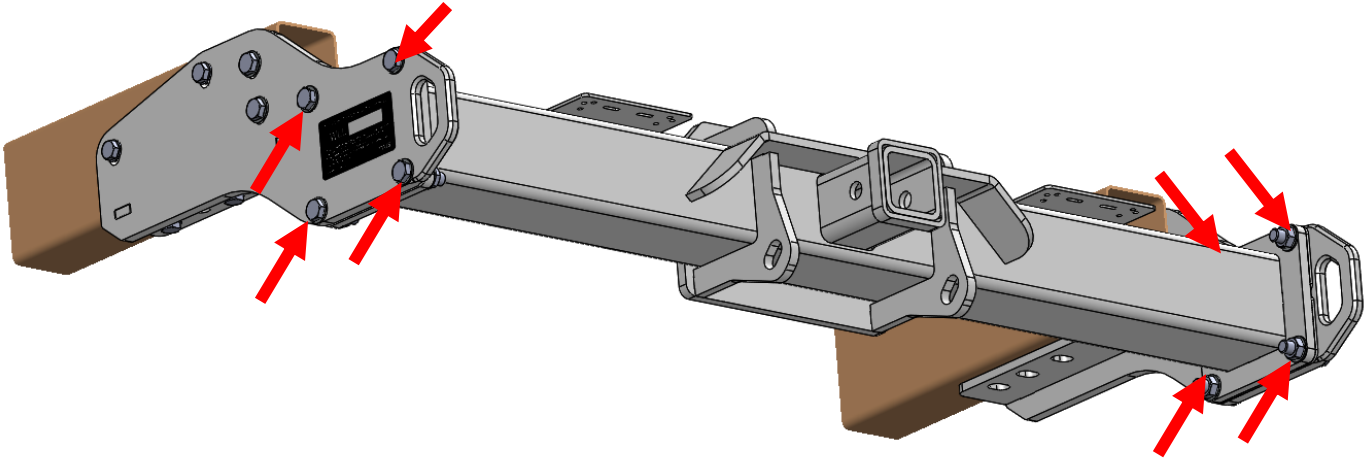
- d. Repeat steps (a – c) on the drivers side chassis.

Installation Instructions



- e. Lift the main bar up to the inside of the end plates and insert 2x of the four M12 bolts temporarily. Add nuts to the start of the bolt threads so the bar does not fall.
- f. Working on one side at a time whilst supporting the main bar, remove the M12 bolts and insert the Recovery Point End Plate between the chassis end plate and the outside of the main bar.
- g. Insert 4 x M12 x 1.25 x 45 bolts with flat washers and loosely secure with M12 x 1.25 nuts with flat washers.
- h. Repeat step (f-g) on opposite side.

NOTE: Use the provided 3mm spacer plates if required.



- i. Beginning with the chassis bolts, tighten all bolts according to the torque specification chart on page 3.

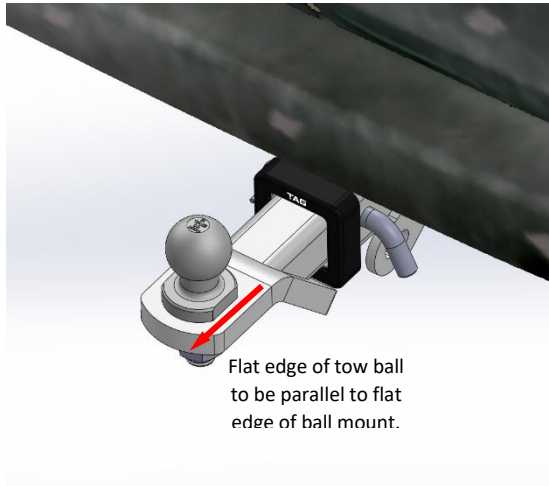


Installation Instructions



Step 2: Complete Towbar & Apply Spare Compliance Label

- Attach TAG Hitch cover with rubber mallet carefully to prevent breaking.
- Attach the tow ball to the ball mount. The flat side of the tow ball **MUST BE** parallel to the outer edge of the ball mount. **Tighten the tow ball to 300Nm.**
- Insert the ball mount into the receiver and secure with the Pull pin and R-Clip. When not in use, secure the Ball Mount in a safe place inside your vehicle.
- Apply one of the compliance labels to the pillar of the driver's door. Place the remaining label and the fitting instructions in the vehicle handbook.



TAG Warranty Statement



SWD warrants your TAG Towbar for its full product life under the following conditions:

- You can show proof of purchase.
- The towbar has been correctly installed by a suitably qualified installer.
- The towbar has not been modified or abused in any way and has only been used for the purpose intended.
- The towbar was not fitted second hand to your vehicle.

The extent of this warranty includes materials and workmanship used in the manufacture of the towbar and is to the equivalent value of current, full replacement cost.

Nothing stated or implied in this warranty limits in any way, the statutory rights that you may have.

To make a claim visit the original installer in the first instance or, if you are unable to or are not satisfied with their help, then contact us direct by phone on 1300 669122 or visit www.swd.com.au.