



# TINA DAL

*USA based Fashion Model*

## PROFILE

I am a high fashion model who is originally from Detroit, Michigan but has been able to travel internationally for the fashion industry!

## STATISTICS

Hair	Brunette
Eyes	Hazel
Weight	105 lbs.
Height	5'8"/173cm
Waist	24in/60cm
Bust	30in/76cm
Hip	33in/83cm

DOB: 02/25/2001

## RUNWAY

**2021** New York Fashion Week  
Kenneth Nicholson SS22  
Des Pierott SS22  
Imitation of Christ SS22

## SPECIAL SKILLS

Dance

## CONTACT

Email:  
christinadal.modeling@gmail.com

Phone: (248) 912-2940

Instagram: whoistinadal

## TRAINING

**2021** Coco Rocha Model Camp

**2018** IMG Fashion Camp

## COMMERCIAL WORK 2021. ADDITIONAL YEARS AVAILABLE UPON REQUEST

**2021** Malvie Magazibe Cover and article in the September edition  
KMxtend hair extensions collaboration

English Factory E-commerce photoshoot

Second Dance GR E-commerce work

## LANGUAGES

English, Spanish, beginner Italian





www.MALVIEmag.com

# MALVIE

Digital  
Cover

magazine

EXPRESS YOURSELF  
**SEASON'S HOTTEST  
TRENDS**  
LOVE STORY, IT'S  
YOU THAT MATTERS

CHRISTINA  
D'ALESSANDRO  
PHOTOGRAPHED BY  
**MARÍA  
NOVO**  
FASHION DESIGNER  
PAULA DELGADO

TAKE YOUR  
FRONT-ROW SEAT  
FOR OUR  
**COUTURE**  
EXTRAVAGANZA

POWER OF  
THE YOUTH

**THE NEW  
ELLEGANCE**  
AN AUDIENCE  
WITH THE WORLD'S  
GREATEST ARTISTS

**RÊVESET**  
DANS LE  
TEMPS  
**REALITE**









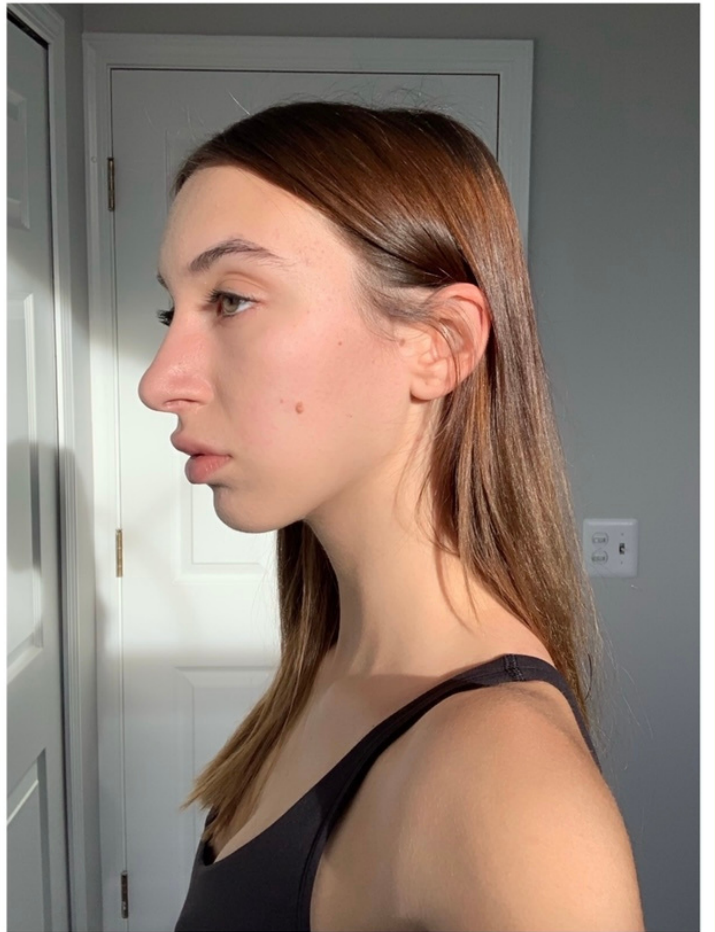
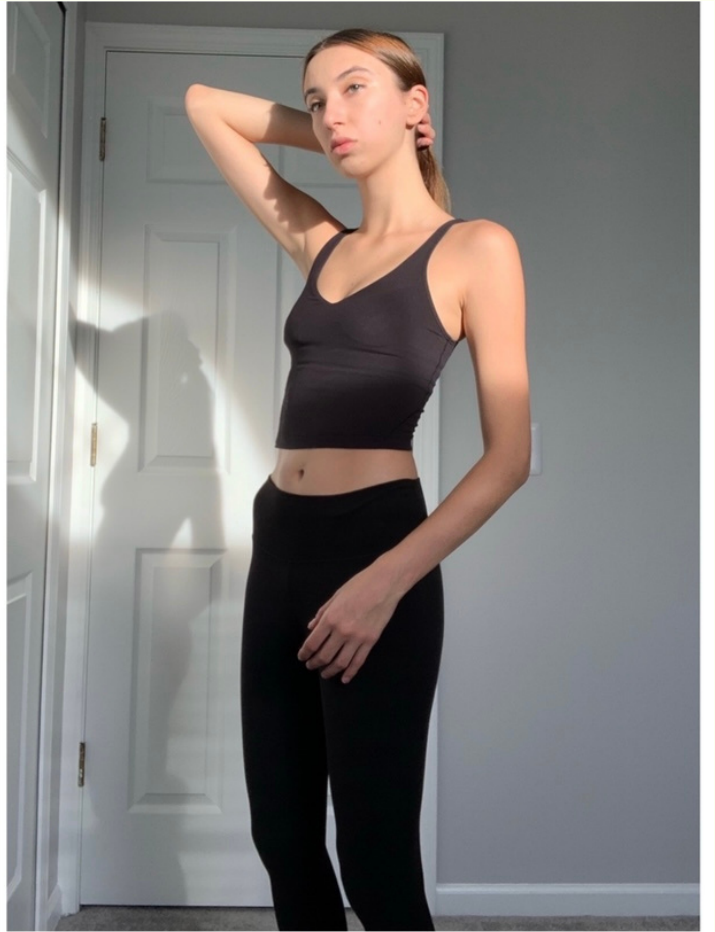
Imitation of Christ, spring 2022 ready-to-wear Photo: Michael  
Loccisano / Getty Images for NYFW: The Shows













Polaroids