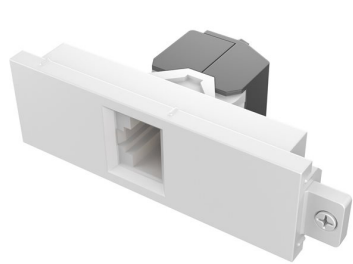


VISION Techconnect Modular AV Faceplate Module - LIFETIME WARRANTY(TC3 RJ45/KS)

RJ45 CAT6A module - female on front - butterfly type - bare-wire punch-down on rear - low next noise design - system warranty compliant - fixes into Techconnect surrounds - plastic - white



The Vision Techconnect TC3 RJ45/KS is designed for high-performance networking needs with its effective modular insert configuration. With one port available and punchdown termination features, it facilitates a simplified installation process while ensuring solid connections. The gold-plated contacts ensure reliable performance, and the CAT 6a category classification enhances data transmission capabilities. This modular insert is wall outlet connectable and is compatible with T568A/B wiring schemes, providing versatility in various networking environments. Constructed from durable polycarbonate, this Ethernet module upholds quality standards, meeting ISO 9001:2015 compliance for reliability. Ideal for both residential and commercial applications, it ensures user-friendly installation and quality connectivity for all network needs.

Key Selling Points

- Includes one port with punchdown termination
- Constructed with gold-plated contacts for reliability
- Compatible with CAT 6a standards for data transmission
- Designed for RJ-45 wall outlet connections
- Meets ISO 9001:2015 compliance for quality assurance

Product Features

- Reliable connectivity**
Equipped with gold-plated contacts, this modular insert ensures consistent performance and long-lasting connections for networking applications.
- Versatile compatibility**
This Ethernet module supports both T568A and T568B wiring schemes, adapting to various installation requirements.
- Durable construction**
Made from robust polycarbonate material, this product is designed to withstand regular use and maintain performance over time.

Main Specifications

Product Description	Vision Techconnect modular insert
Product Type	Modular insert - CAT 6a - RJ-45
Placing / Mounting	Faceplate mountable
Dimensions (WxDxH)	2.07 cm x 3.85 cm x 7.5 cm
Product Material	Polycarbonate
Colour	White
Port Qty	1 port
Wiring Scheme	T568A/B
Compliant Standards	ISO 9001:2015
Manufacturer Warranty	30 years warranty

Extended Specification

General

Product Type	Modular insert - CAT 6a
Placing / Mounting	Faceplate mountable
Product Material	Polycarbonate
Width	2.07 cm
Depth	3.85 cm
Height	7.5 cm
Enclosure Colour	White

Manufacturer Warranty

Service & Support	Limited warranty - 30 years
-------------------	-----------------------------

Miscellaneous

Compliant Standards	ISO 9001:2015
---------------------	---------------

Cabling & Wiring

Port Qty	1 port
Wiring Scheme	T568A/B
Features	Gold-plated contacts, punchdown termination
Connector Provided	1 x RJ-45 female

Dimensions & Weight (Shipping)

Shipping Width	2.2 cm
Shipping Depth	8 cm
Shipping Height	16 cm
Shipping Weight	150 g

Product data is provided by CNET, we do not warrant the accuracy and completeness of the material contained in this data sheet