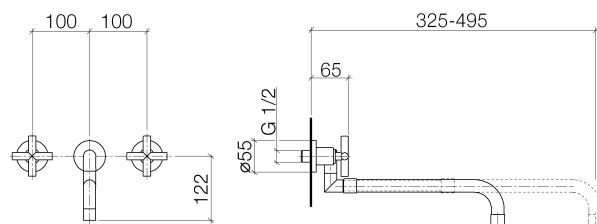




Product specifications

Exposed trim parts only, rough to be ordered separately

- **12 3/4-19 1/2" projection**
- Swivel spout
- Extendable spout
- Spout with integrated aerator
- 2x Ceramic disc cartridge, stem can be cut to length 1/2"
- 2x brass sleeve can be cut to length
- Flanges, diameter 2 1/8"
- Water flow rate limited to max. 1.5 gpm
- low lead compliant



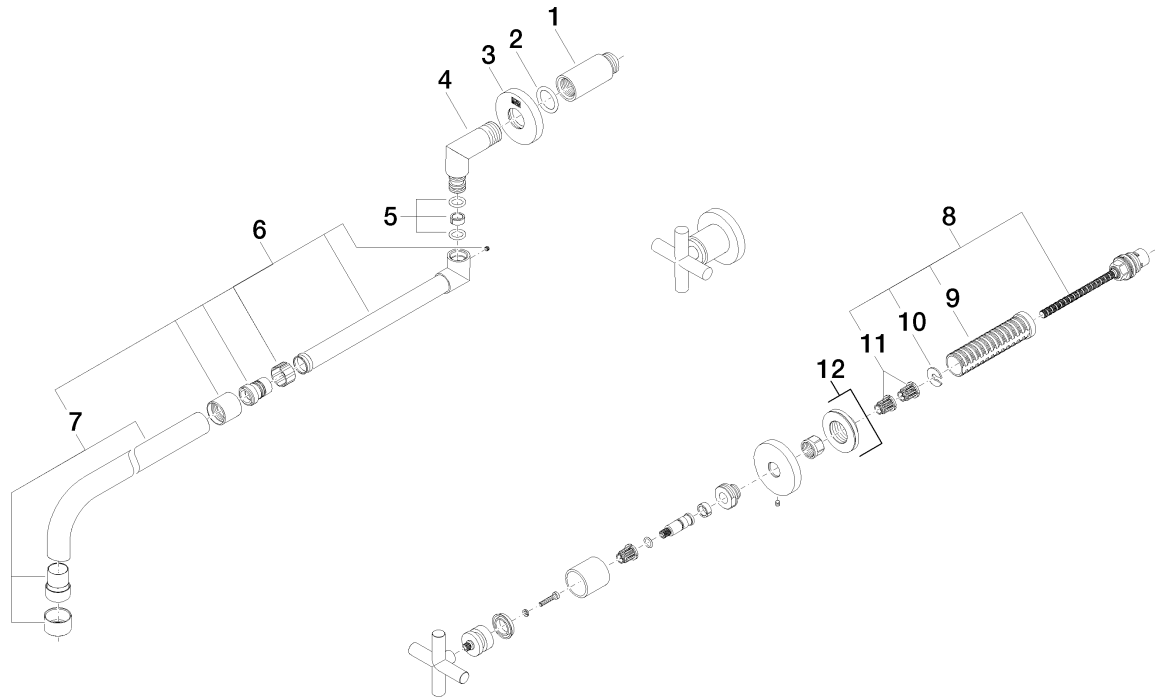
Surfaces

- | | |
|-----------------|-------------|
| • chrome | 36819892-00 |
| • matt platinum | 36819892-06 |

Accessories required

- Rough, spout on the left; 35713970
- Rough, spout in the center; 35707970
- Rough, spout on the right; 35714970
- Rough, flexible positioning; 35712970

Exploded assembly drawing



Kitchen

Tara. Wall-mounted three-hole kitchen mixer

Article number: 36819892



Order quantity

No.	Article number	Name	Installation quantity
1	0924030811090	extension	1
2	09141002690	seal	1
3	092722503ff	rosette	1
4	09230108790	flow reducer	1
5	09110301310ff	connection	1
6	9014150200090	gasket kit	1
7	04282507710ff	spout	1
8	90282507600ff	spout	1
9	0490031570090	top	2
10	09184007790	sleeve	2
11	09160102690	ring	2
12	09121200290	fixing cap	4
13	36310892ff	connection	2