

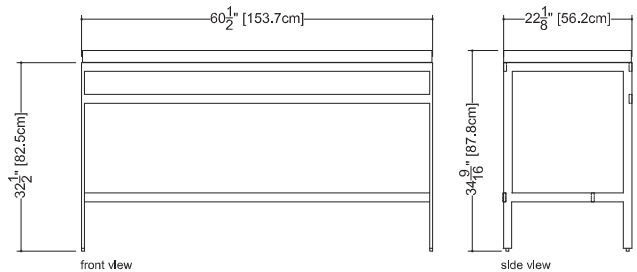


Furniture

CONSOLE TABLE C 60M – mirror finish **C 60B** – brushed finish **C 60BLK** – blackened mirror
 dimensions: 22 1/8" depth x 60 1/2" length x 34 9/16" height - 562 x 1537 x 878 mm

- **Stainless steel**
grade 304
gauge 16
- **finish**
mirror
brushed
blackened mirror
- **laminated glass**
(2) 2,7 mm non-tempered Starphire
0,030" PVB ■ Polished sides

- console is made of stainless steel
- adjustable legs
- to combined with 60 inch – 152 cm integrated countertop CUBE
- combination weight - 105 lb (US) 48 kg (CA)
- overflow
without overflow: VCS 60
built-in overflow: VCS 60-O
polished chrome or brushed nickel
- faucet hole
mono, 8" c/c or no hole
- option
decorative round-style bottle trap
polished chrome or brushed nickel



WETSTYLE cannot be held responsible for any technical errors and reserves the right to make revisions without notice.

Approximate measurement.
 The manufacturer accepts 1/4" (6.35mm) variance.

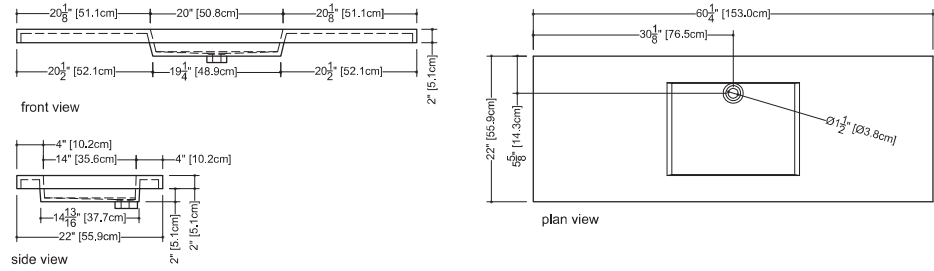
R10/13

www.WETSTYLE.CA - Montreal - Canada
 Tel. 450.536.9000 - 1 888.536.9001 - Fax. 450.536.0202

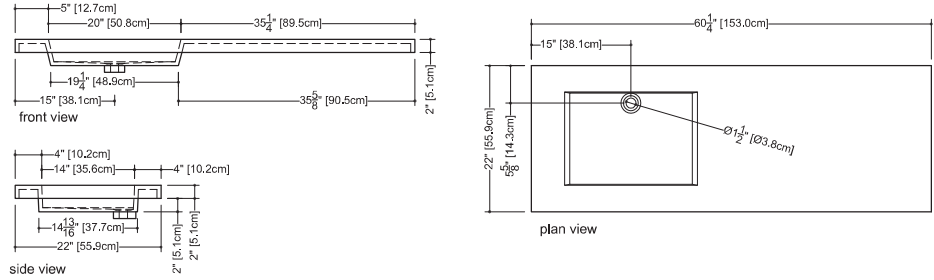


Cube Collection Integrated Countertop_22" depth x 60 1/4" length x 2" height - 559 x 1530 x 51 mm

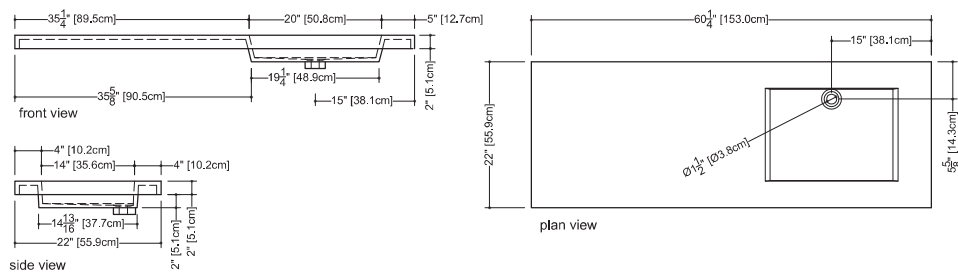
VCS 60C



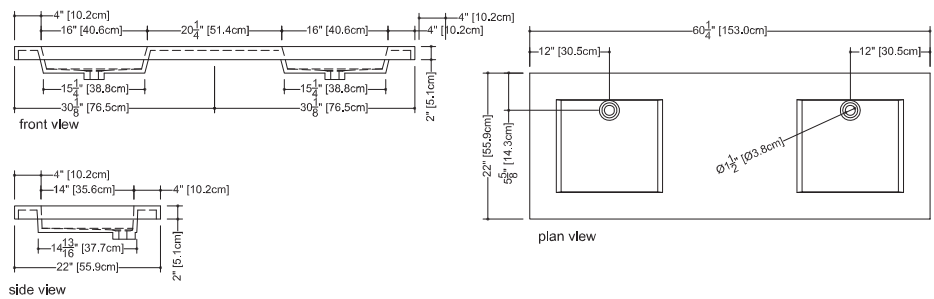
VCS 60L



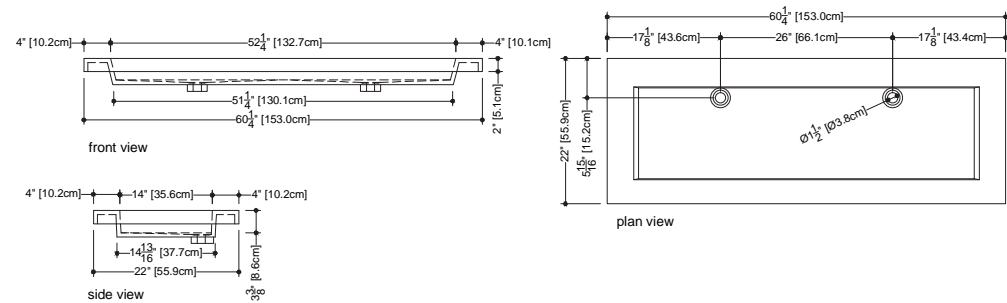
VCS 60R



VCS 60



VCS60T



WETSTYLE cannot be held responsible for any technical errors and reserves the right to make revisions without notice.

Approximate measurement.
The manufacturer accepts 1/4" (6.35mm) variance.