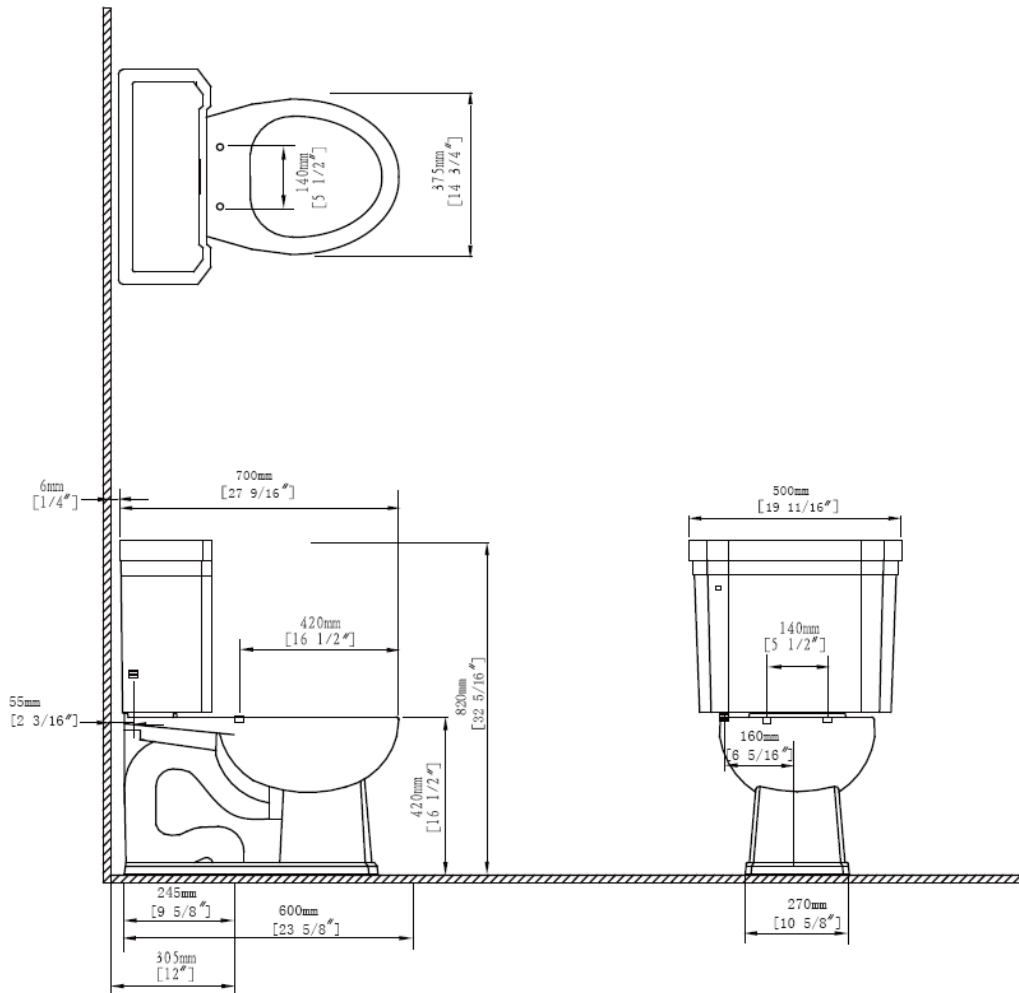


Chair-Height Round-Front Bowl 6123.821 & Tank 6125.028

Technical information:

Fixture		Included components:	
Configuration	2PC Round-Front bowl & tank	Bowl	6123.821.xx
Flushing volume	1.28 gpf / 4.8 lpf	Tank	6125.028.xx
Passageway	2 1/8"	Silent Close Seat	9400.480.xx
Seat post hole centers	5 1/2"	Valve Kit	9400.509.00
Fixture	Weight	Trip Lever	9400.120.xx
Bowl	L 27 9/16" x W 14 3/4" x H 16 1/2"	Bolt caps	9400.170.xx
Tank	L 8 7/8" x W 19 7/8" x H 15 13/16"	Tank lid	6125.025.xx

Product diagram:



These measurements are subject of change or cancellation. No responsibility will be assumed for use of superseded or voided pages.