

# Emma

Simplicity and classic design define the Emma. With its spacious and barrier-free interior, the Emma is just the tub for relaxation. Shown with no drip ledge.

### Available Sizes:

66"L x 42"W x 22"D  
 85 Gallons



### Acrylic Tub – construction features

**Acrylic** models finished in 1/8" thick layer of deep lustrous acrylic.

**Extra thick** reinforced fiberglass.

**Pre-wired** pump on pump platform (standard pump location only)

**Integral E-Z** Level platform facilitates installation.

**Non-skid** bottom.

### PVC Systems – include:

**8 Fully** directional adjustable PVC jets

**Anti-vortex** safety suction.

*Color matched* system trim

**Hydrozone** ozone sanitation system

**Rigid PVC** piping

**Self draining** pump and system

**Soft Touch** electronic on/off control with 30-min. integral timer

**2.25 HP** Single Speed Pump

**Cable** waste & overflow

### Hydro Systems – Options:

**Available** as Tub only, Thermal Air, Whirlpool or Combo

**Microban** Antibacterial Protection

**Extra High Density** Fiberglass

**Armrests**

**Skirt**

**Custom** jet and pump locations

**Plated** Metallic finish

**Additional** directional Jets

**Swirling**, Rotating, or Jumbo Jets

**Micro Therapy** Jet

**Integral** Waste & Overflow

**1.5 HP** Variable Speed Pump (digital temperature display optional)

**Electronic** low water protection

**In-line** Heater

**Chromatherapy-LED** Lighting System

**Chromatherapy-LED** Mini Spotlights

**Mood Light**

**Grab Bars**

**Back Masseuse**

**Neck Masseuse Pillow**

**Hydro Fragrance**

**Hydro Fusion**

**Hydro Coat**

**Hydro Express quick ship**

### Approvals & Listings

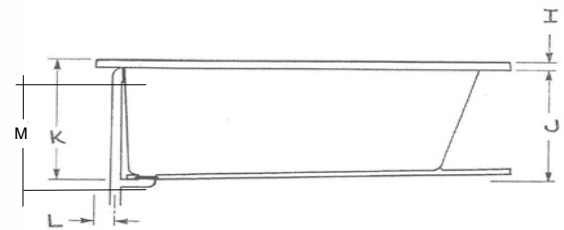
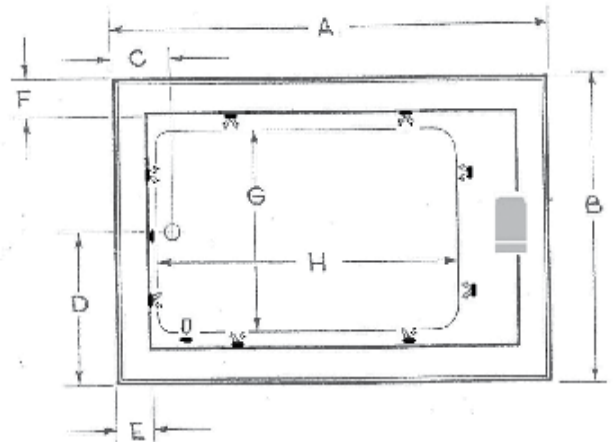
Commonwealth of Massachusetts  
 UPC & USPC - US & Canada







# Emma

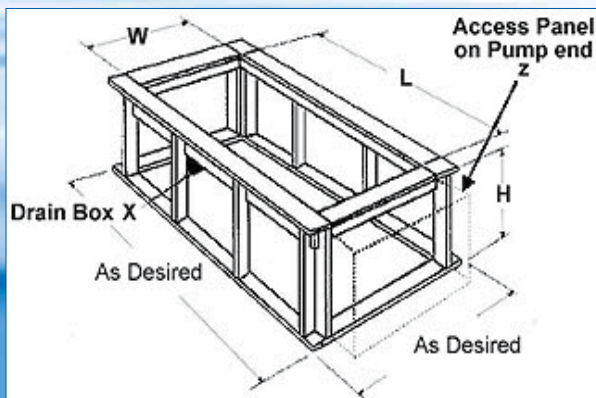


Must be set in Mortar Base



-  Pump motor
  -  Jets
  -  Anti-vortex suction
  -  Overflow location
- AS SHOWN:  
Whirlpool option w/ standard jets
- ALSO AVAILABLE:  
Soaking Tub Only,  
Thermal Air, Combo

Model	GC	AC	A	B	C	D	E	F	G	H	I	J	K	L	M	Jet	Pump	Wat.Cap.
6642	N/A		66"	42"	8½"	21"	4½"	4½"	29"	48½"	1¾"	20¼"	22"	3½"	19½"	8	2.25	85 gal.
<b>Amp</b>	<b>Volt</b>	<b>Breaker</b>	<b>Dedicated Service</b>															
13.5	120	20 amp	GFCI Protected															



Drop- Installation				
Model	(L)ength	(W)idth	X	(H)eighth Finish
6642	64"	40"	47¼"	21¼"

*Disclaimer: Certain options or altering the pump/blower location may cause the pump/blower to extend beyond the tub decking. For cutout dimensions wait for unit to arrive. All specifications subject to change without notice.*