

**Celebrity® Double Bowl-Corner
20 Gauge - Type 304 - Self Rim
Model CCR-3232**



SPECIFICATIONS

GENERAL

Space-saving corner model sink for installation in "L" shaped counter top layout. Good quality sink bowls seamlessly drawn of #20 gauge, type 304 (18-8) nickel bearing stainless steel.

DESIGN FEATURES

- Bowl Depth: 7".
- Coved Corners: 3" vertical radius.
- Bowl Recessed: 3/16" below outside edge of sink.
- Finish: Exposed surfaces are machine polished to a highlighted bright finish, with hi-shine bowl radius.
- Underside: Fully undercoated to prevent condensation and deaden sound.

OTHER

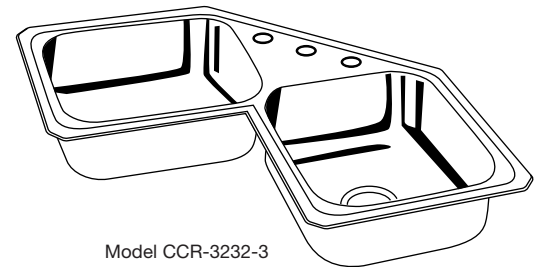
- Drain Opening: 3-1/2".
- Note: Where three or four faucet holes are indicated, four faucet holes furnished unless otherwise specified.
- Complies with ANSI Standard A112.19.3M.



This sink is listed by the International Association of Plumbing and Mechanical Officials as meeting the requirements of the Uniform Plumbing Code.



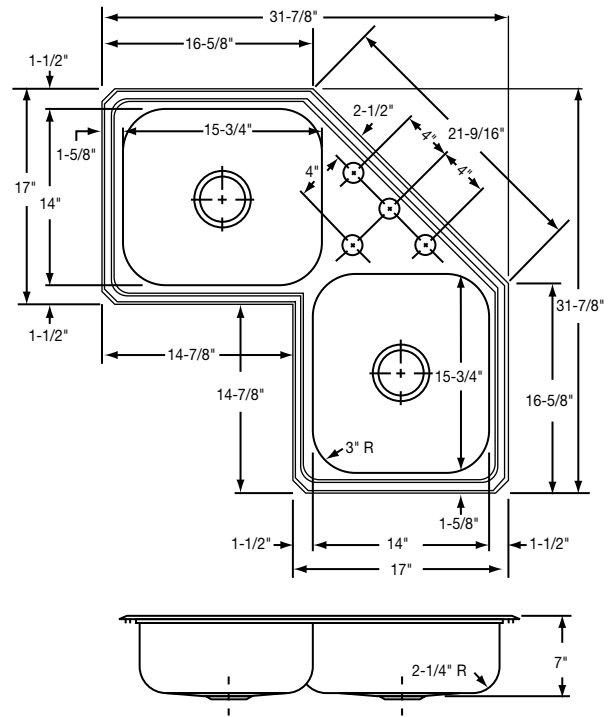
This sink is listed with the Canadian Standards Association.



Model CCR-3232-3

SINK DIMENSIONS

Model Number	DIMENSIONS IN INCHES					Cutout in Countertop Use Sink Up-side-down as template and cut 5/16" INSIDE Sink Outline	No. of 1 1/2" Dia. Faucet Holes 4" Centers	Ship. Wt. Lbs.
	Length is left to right. Width is front to back.							
	Overall		Inside Each Bowl					
L	W	L	W	D				
CCR-3232	31 7/8	31 7/8	15 3/4	14	7	INSIDE Sink Outline	3 or 4	18 1/2



Model CCR-3232-4 Illustrated

ALL DIMENSIONS IN INCHES, TO CONVERT TO MILLIMETERS MULTIPLY BY 25.4.

In keeping with our policy of continuing product improvement, Elkay reserves the right to change product specifications without notice.

This specification describes an Elkay product with design, quality and functional benefits to the user. When making a comparison of other producers' offerings, be certain these features are not overlooked.