



LEFROY BROOKS

1 8 2 8 T R O U T M A N S T R E E T
R I D G E W O O D N E W Y O R K N Y 1 1 3 8 5 U S A
T: +1(718) 302 5292 F: +1(718) 302 4177

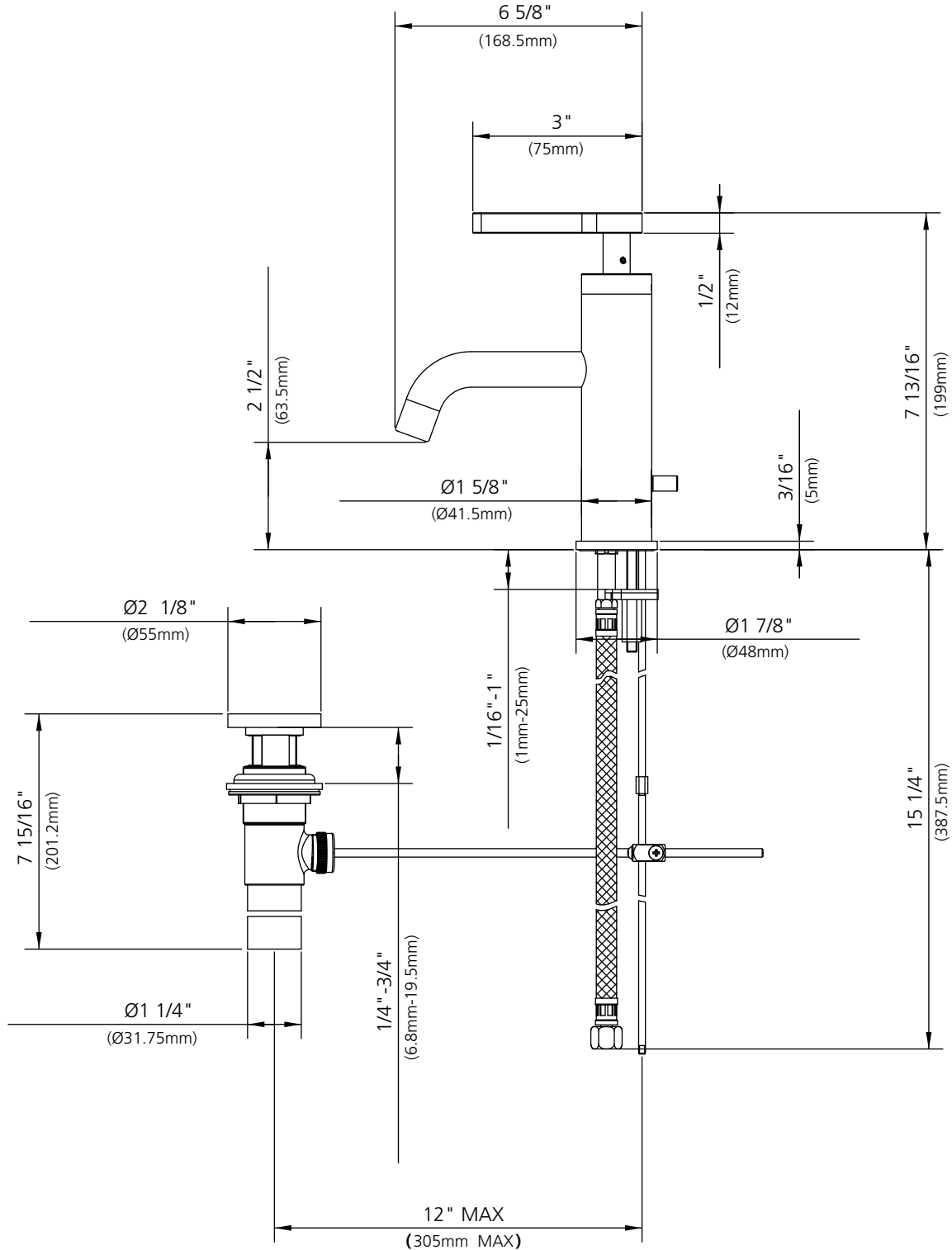
K1-1203

LEVER MONOBASIN WITH P.U.W.

DIMENSIONAL DATA SHEET

DATE: 15 December 2009

No: FS1AC600



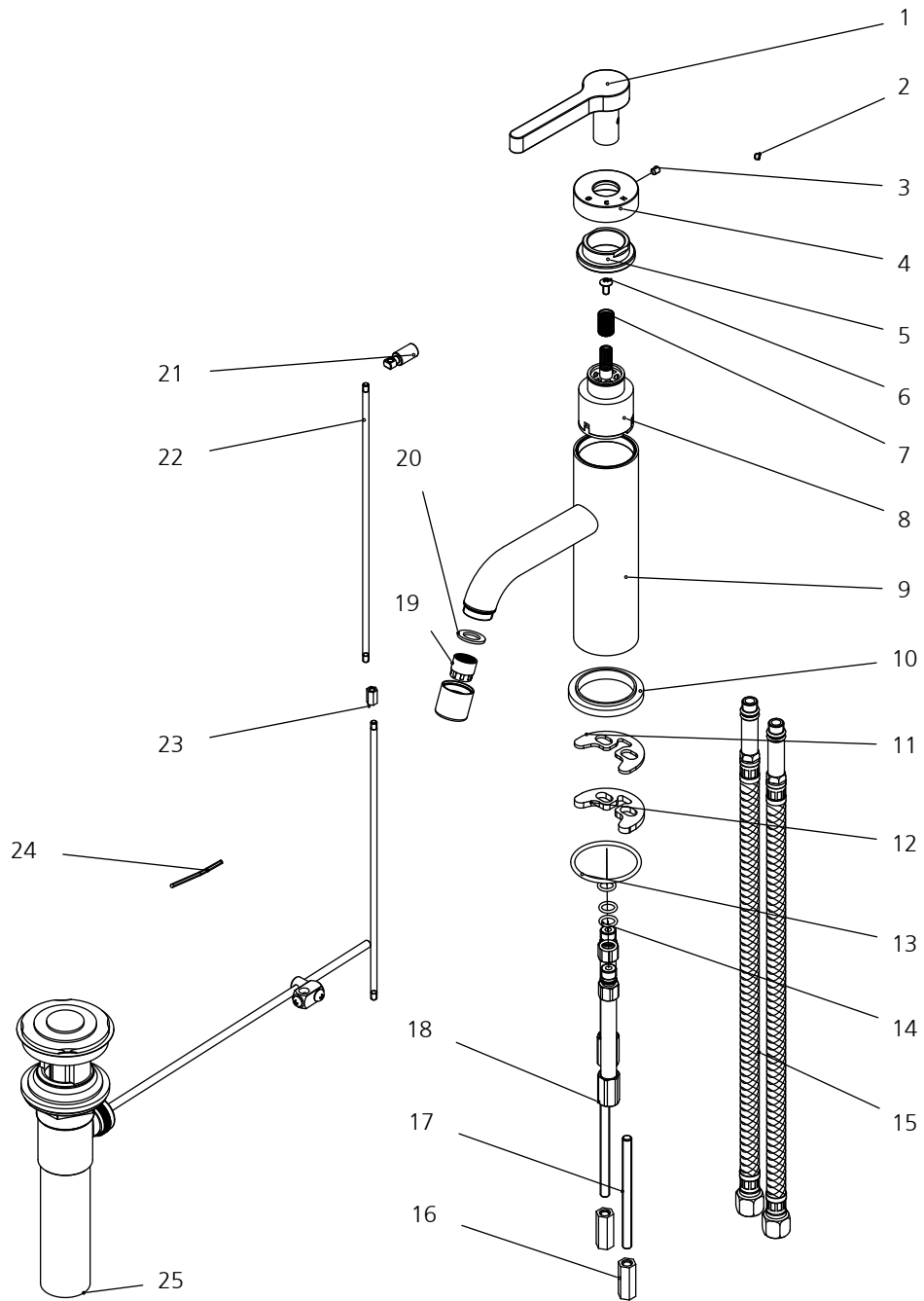
©COPYRIGHT 2009. CHRISTO LEFROY BROOKS. ALL RIGHTS RESERVED.

DIMENSIONS IN INCHES & MILLIMETRES

WHILST EVERY EFFORT IS MADE TO ENSURE THE ACCURACY OF THESE DATA SHEETS THEY ARE SUBJECT TO CHANGE WITHOUT NOTICE AS PART OF THE COMPANY'S PRODUCT DEVELOPMENT PROCESS

K1-1203

LEVER MONOBASIN WITH P.U.W.



- | | | | | | |
|---|--------------------------|----|--------------------------|----|------------------------------|
| 1 | Handle (506078-50) | 10 | Base (034770) | 19 | Aerator insert (553641N) |
| 2 | Screw (008772) | 11 | Washer (013715) | 20 | Oil-seal (010805N) |
| 3 | Set screw (292545) | 12 | Washer (013978) | 21 | Pop-up knob (124367) |
| 4 | Collar (215358-50) | 13 | O-ring (048031N) | 22 | Pop-up rod (125322) |
| 5 | Adjusting ring (104257) | 14 | O-ring (004001N) | 23 | Adaptor (039807) |
| 6 | Screw (065172) | 15 | Flexible hoses (105193N) | 24 | Allen wrench (031003) |
| 7 | Adaptor (057673) | 16 | Nut (009812) | 25 | Pop-up sub-assembly (556781) |
| 8 | Cartridge (507859N) | 17 | Bolt (017820) | | |
| 9 | Spout assembly (061943N) | 18 | Pipes assembly (064245N) | | |