



Product specifications

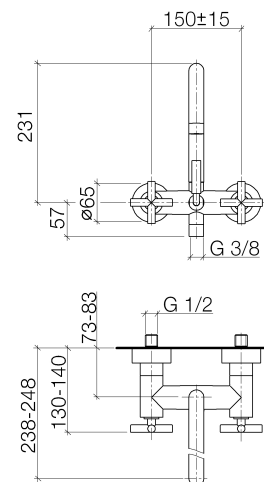
- **9 1/2" projection**

- M 22 x 1 aerator – female thread
- Back flow preventer in shower outlet
- 3/8" female or 1/2" male connection
- 1/2" ceramic disc cartridge
- Diverter
- Flanges \varnothing 2 1/2"
- Center to center 5 7/8"
- Required adaptors (2 x 35 080 970-90 0010) to be ordered separately

Combination with risers possible on request.

Internal backflow preventer.

NOTE: Local building codes may require the use of an anti-scald device. Please refer to remote pressure balanced valve (35 910 970 90)





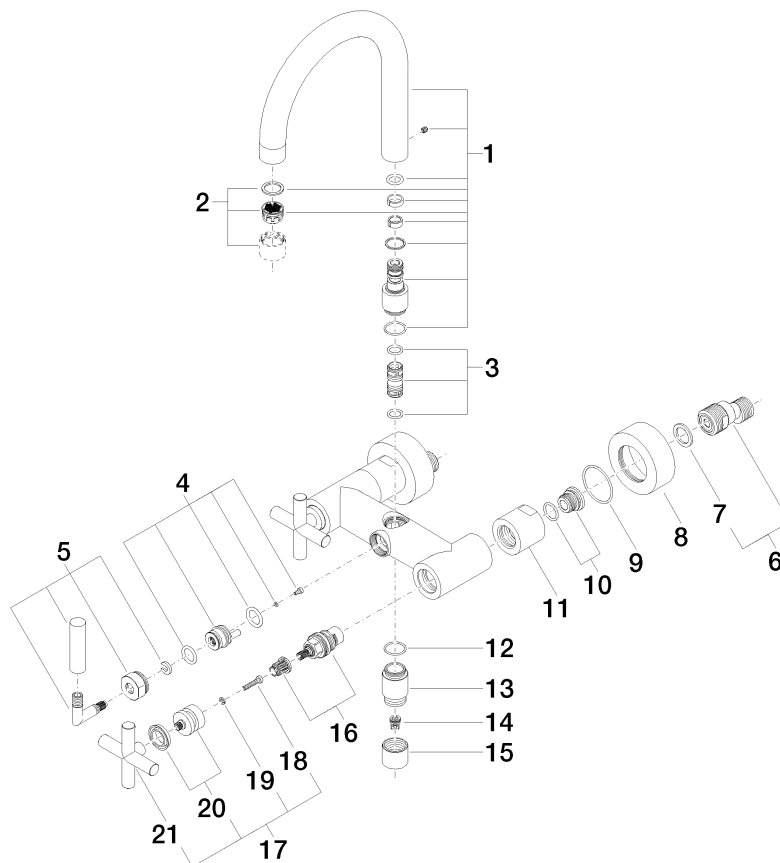
Surfaces

- chrome 25100892-00
- chrome 25100892-00
- matt platinum 25100892-06
- matt platinum 25100892-06
- platinum 25100892-08
- platinum 25100892-08
- matt white 25100892-10
- matt white 25100892-10
- matt black 25100892-33
- matt black 25100892-33

Accessories required

- Hand shower set; 26403892
- Hand shower set; 26403892
- Hand shower set; 26402892
- Hand shower set; 26402892

Exploded assembly drawing



Order quantity

No.	Article number	Name	Installation quantity
1	90282221900ff	spout	1
2	90230102400ff	aerator	1
3	9021100110090	diverter	1
4	9015010050090	insert	1
5	90182002500ff	diverter	1
6	0411040300090	connection	2
7	09142001090	seal	2
8	092789103ff	rosette	2
9	09141003490	seal	2
10	0429050140090	nipple	2
11	092310064ff	nut	2
12	09141003290	seal	1
13	092403121ff	nipple	1
14	09230113190	back-flow preventer	1
15	092102143ff	sleeve	1
16	9090031310090	top	2
17	04208901000ff	handle	2
18	09303007590	screw	2
19	09301102990	disc	2
20	90121200700ff	base	2
21	092089010ff	handle	2

