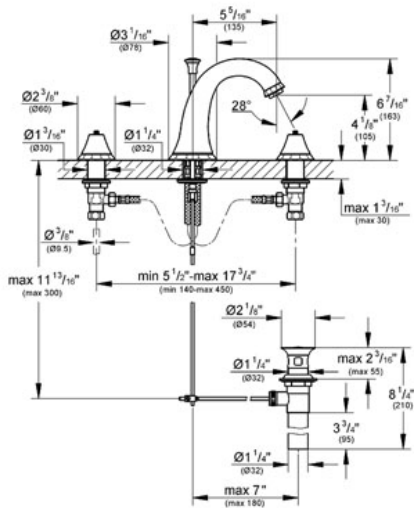


KENSINGTON
 Three-hole basin mixer 1/2"
 MODEL # 20124

Pure Freude an Wasser



GROHE America, Inc | 200 North Gary Avenue, Suite G, Roselle, IL 60172
 Phone: +1 (800) 444-7643 | Fax: +1 (800) 225-2778 | us-customerservice@grohe.com



Product Description:
 Three-hole basin mixer 1/2"

Standard Specification:

- GROHE StarLight® finish
- Handles sold separately
- Flow control
- Side valves
- 1/2" ceramic cartridge (90° turn)
- 1 1/4" pop-up waste set
- Pressure resistant flexible connection hoses (between spout and side valves)
- Round Handles 18 086 000 & 18 086 EN0 (sold separately)
- Swarovski® Crystal Handles 18 086 VP0 (sold separately)
- Lever Handles 18 087 000 & 18 087 EN0 (sold separately)
- Max Flow Rate 1.5 gpm (5.7 L/min)

Applicable Codes & Standards:

- Energy Policy Act of 1992
- NSF 61
- ASME A112.18.1/CSA B125.1
- US Federal and State material regulations
- EPA WaterSense®

Color:

- 20124 000 chrome
- 20124 EN0 Brushed Nickel

