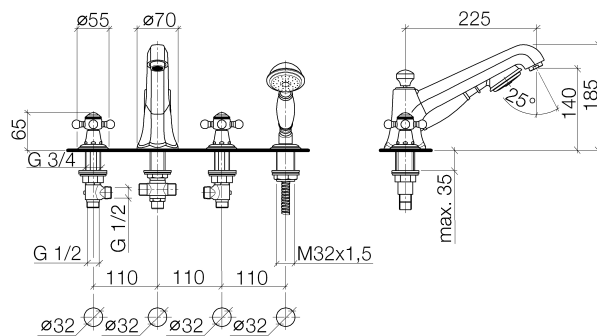




Product specifications

- **8 7/8" projection**
- M 28 x 1 aerator – male thread
- Back flow preventer in shower outlet
- Automatic diverter
- 1/2" deck valves with ceramic disc cartridges
- Hand shower with back flow preventer
- Metal shower hose 88 5/8", consisting of 1 pc. 19 5/8" chrome plated metal hose and 1 pc. 68 7/8" flex line
- 1 1/4" hole diameter
- 35° x 1/2" x 1/2" angle
- 2x 1/2" x 1/2" x 15 3/4" high pressure hose
- Shower hose guide
- Hand shower water flow rate limited to max. 2.38 gpm
- ...
- Internal backflow preventer.

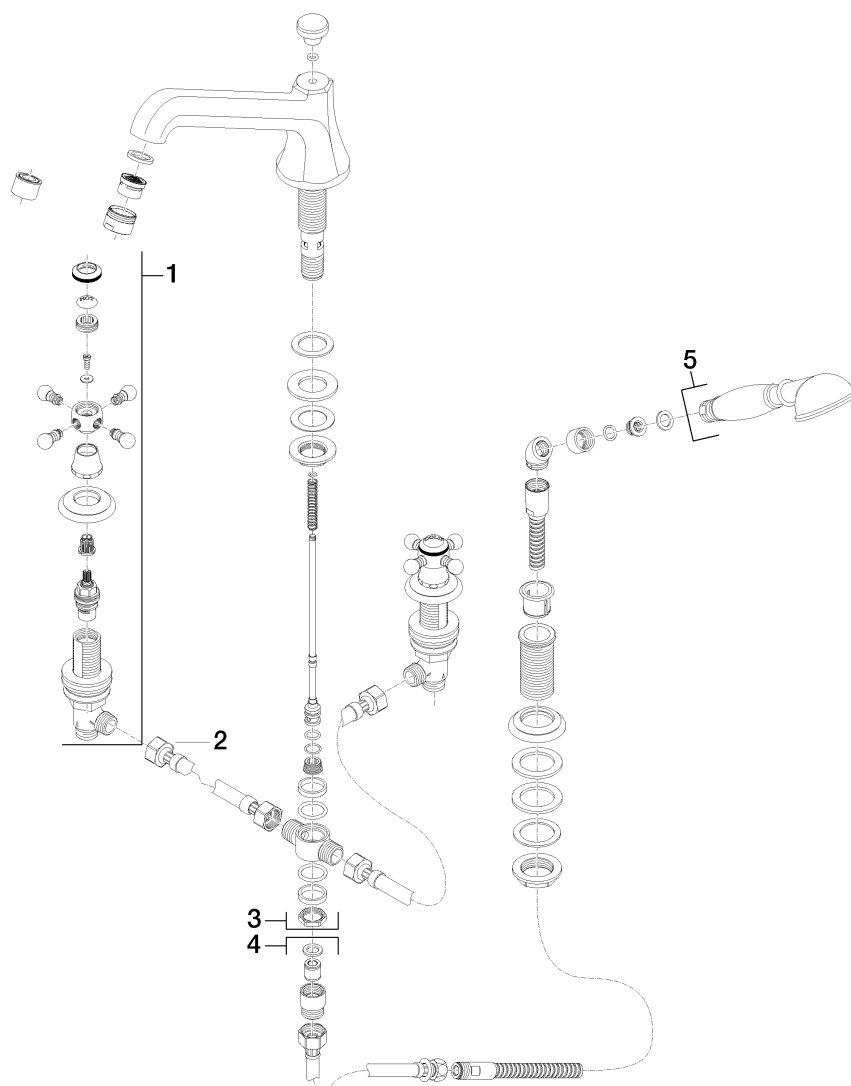




Surfaces

- chrome 27502360-00
- chrome 27502360-00
- matt platinum 27502360-06
- matt platinum 27502360-06
- platinum 27502360-08
- platinum 27502360-08
- brass 27502360-09
- brass 27502360-09

Exploded assembly drawing



Order quantity

No.	Article number	Name	Installation quantity
1	20000360ff	side panel	1
2	1250297090	hose	2
3	13502380ff	spout	1
4	27703360ff	shower set	1
5	28002970ff	shower	1

