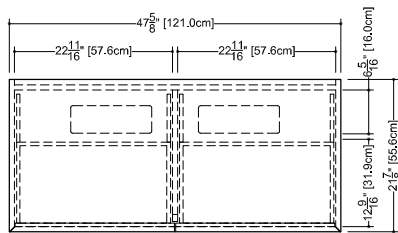


M Collection  
Wall-mount vanity  
18" height

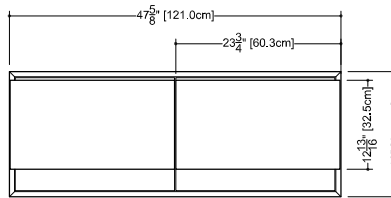


# Furniture

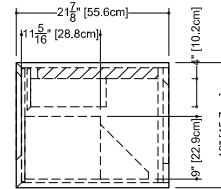
## Wall-mount vanity M 4818 WM – 2 drawers – 48" length 21 7/8" depth x 47 5/8" length x 18" height – 557 x 1210 x 457 mm



plan view



front view



side view

### Finishes and colors

oak	matte lacquer*
natural	white
white	light grey
wenge	blue steel
light grey	sand
blue steel	hemp
sand	
hemp	
smoked	

walnut	high gloss lacquer**
natural	white
chocolate	

- 45 degree bevel cuts precluding the need for drawer hardware
  - all natural wood veneer on dimensionally stable MDF core
  - AWI rated level 5 marine grade finish for moisture resistance and durability (industry's highest finishing class)
  - finished vanity interiors in addition to front and sides finished vanity interiors in addition to front and sides
  - solid maple dovetailed drawer
  - divider for storage
  - drawer within a drawer
  - slow closing ball bearing glides
  - special wall preparation recommendations
- The distance between studs should not exceed 16". Each stud should be reinforced vertically by 2"x3" wooden studs and horizontally with 2"x6" wooden studs at a height of 30" all along the width of the vanity.

\* ATTENTION: Vessel sink not recommended with this finish

\*\* ATTENTION: High-Gloss finish on sides and drawer facade only. Bottom and interior in white mat. This finish should only be ordered with an integrated countertop (vessel sink not recommended)

WETSTYLE cannot be held responsible for any technical errors and reserves the right to make revisions without notice.

Approximate measurement.  
The manufacturer accepts ±(6.35mm) variance.

www.WETSTYLE.CA - Montreal - Canada  
Tel. 450.536.9000 - 1 888.536.9001 - Fax. 450.536.0202

