



© WETSTYLE

Cube

BC 0803

inch 60x30x24 mm 1524x762x610

■ **interior dimensions**

rim: inch 58x28 mm 1473x711
 base: inch 47.5x27 mm 1207x686
 height: inch 20 mm 508

■ **capacity to overflow**

gal (us) - 86 liters - 326

■ **weight**

lb - 210 kg - 96

■ **plinth, solid oak**

natural, dark brown, white-washed

■ **installation**

freestanding

■ **accessory**

oak bridge wenge shade

■ **material**

WETMAR BIO™, True High Gloss™
 or matte finish

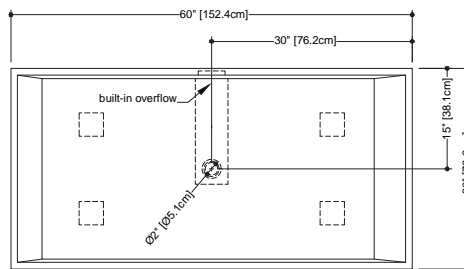
■ **color**

white

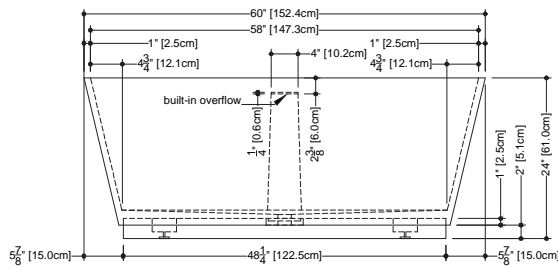
■ **codes/standards applicable**

IAPMO-ANSI Z124.1
 IAPMO-ANSI Z124.3
 CSA B 45.0 - CSA B45.4

BC 0803



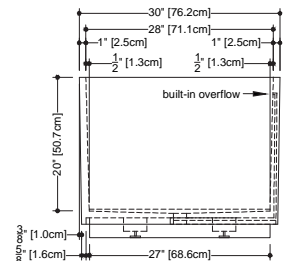
plan view



front view

WETSTYLE Plug & Bathe™ overflow and drain connection system includes:

- Soft-touch pop-up drain, for built-in overflow. Fits both 1-1/2" ABS drain waste and 1-1/2" tubular brass
- 1-1/2" ABS Direct vertical drain waste fitting (copper/brass option also available)
- 1-1/2" ABS 90° Elbow drain waste fitting (copper/brass option also available)



side view

Plumbing installation restriction

BC 0803, freestanding bathtub requires a vertical plumbing connection rising from the floor. A horizontal connection is only possible by drilling a hole in the side of the tub. Please refer to the installation instructions available on our web site.

WETSTYLE cannot be held responsible for any technical errors and reserves the right to make revisions without notice.

Approximate measurement. The manufacturer accept 1/4" (6.35mm) variance.

www.WETSTYLE.CA - Montreal - Canada
 Tel. 450.536.9000 - 1 888.536.9001 - Fax. 450.536.0202





Cube

BC 0803

inch 60x30x24 mm 1524x762x610

■ **overflow and drain connection**
WETSTYLE Plug & Bathe™ system
(ABS or copper/brass)

■ **overflow**
built-in
slot design
polished chrome or brushed nickel

■ **drain**
soft toe touch
polished chrome or brushed nickel

■ **faucet area recommended**
wall-mounted or floor-mounted

■ **option**
columns for wall or
deck-mounted faucets
(refer to the Column collection)

WETSTYLE cannot be held responsible for any technical errors and reserves the right to make revisions without notice.

Approximate measurement.
The manufacturer accept 1/4" (6.35mm) variance.

www.WETSTYLE.CA - Montreal - Canada
Tel. 450.536.9000 - 1 888.536.9001 - Fax. 450.536.0202

