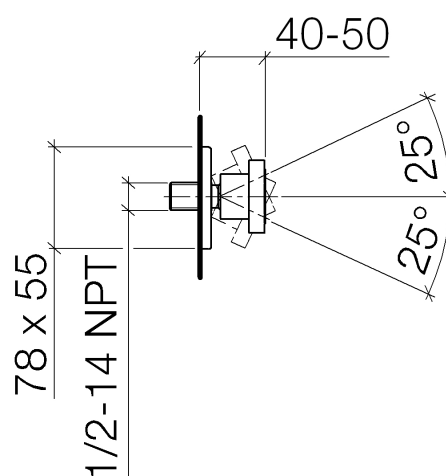




Product specifications

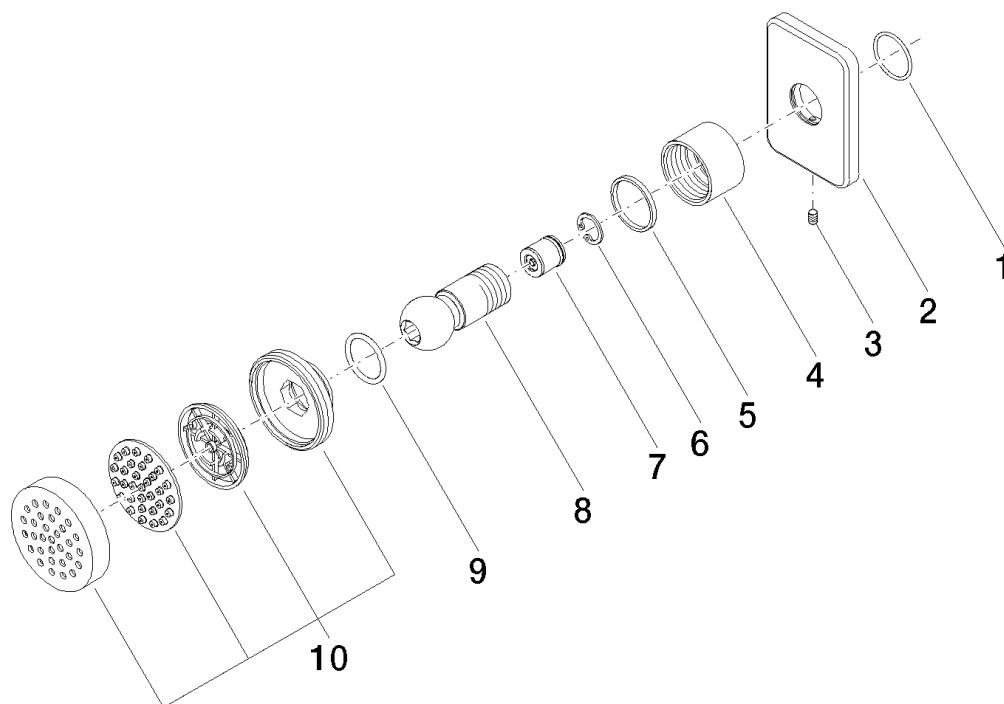
- Flange 3 1/8 x 2 1/8"
- Descaling system
- 25° degree swivel in each direction
- Water flow rate limited to max. 1.32 gpm
- 1/2" connection



Surfaces

- | | |
|-----------------|-------------|
| • chrome | 28518710-00 |
| • chrome | 28518710-00 |
| • matt platinum | 28518710-06 |
| • matt platinum | 28518710-06 |

Exploded assembly drawing



Order quantity

No.	Article number	Name	Installation quantity
1	09141009890	seal	1
2	092771004ff	rosette	1
3	09311104890	pin	1
4	092330026ff	nut	1
5	09141501090	ring	1
6	09160101490	ring	1
7	09230104890	back-flow preventer	1
8	092140016ff	connection	1
9	09141001590	seal	1
10	90120502700ff	casing (completely)	1

