

Date:

Client:

Project:

VOLA product: 132

**132**

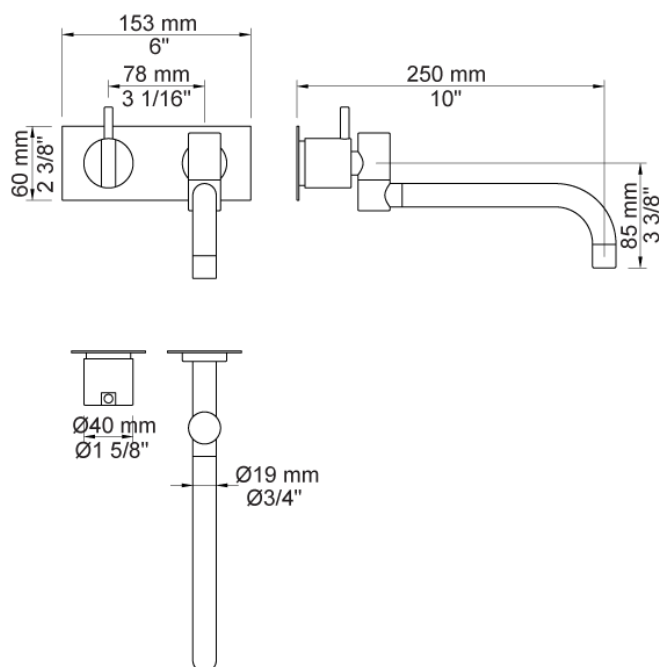
One-handle build-in mixer with ceramic disc technology.

132UP = Mixer 100.

132AP = Handle NR28, 250 mm double swivel spout 030, two-hole plate 60 x 153 mm 3002.

Flow

	Bar:	1,0	2,0	3,0	4,0	5,0
132	(l/min)	8,7	9,0	9,0	9,0	9,0

**Available in colours**

Color 02, Grey
 Color 04, Light blue
 Color 05, Orange
 Color 06, Light green
 Color 08, Yellow
 Color 09, Dark grey
 Color 12, Mocca
 Color 14, Bright red
 Color 15, Dark blue
 Color 16, Polished chrome
 Color 17, Gloss black
 Color 18, White
 Color 19, Natural brass
 Color 20, Brushed chrome
 Color 21, Carmine red
 Color 25, Pink
 Color 27, Matt black
 Color 40, Brushed stainless steel

Date:

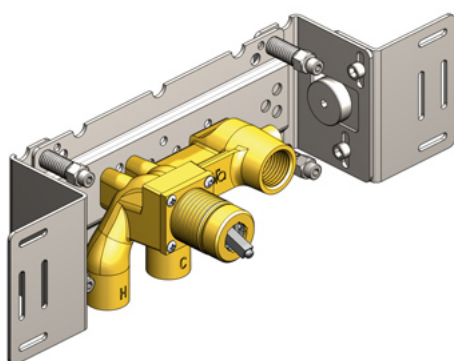
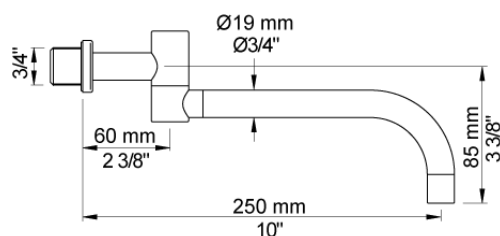
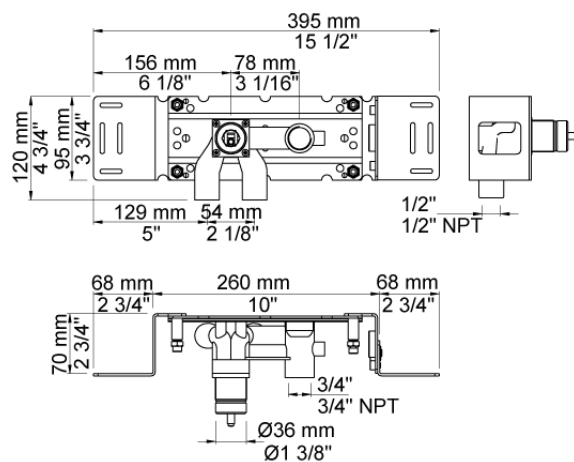
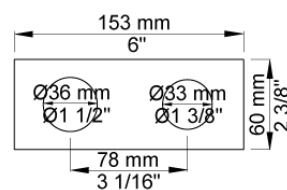
Client:

Project:

VOLA product: 132

**030**

250 mm double swivel spout with water saving aerator.

**100**One-handle build-in mixer with fixed outlet socket.
1/2" connection to copper, steel, iron or pex pipe work.**3002**Two-hole plate, 60 x 153 mm.
Holes Ø36 and Ø33 mm.

Date:

Client:

Project:

VOLA product: 132

**NR28**

Operating handle for 100, 200, 300, 400 incl. variants.
Ø40 mm.

