

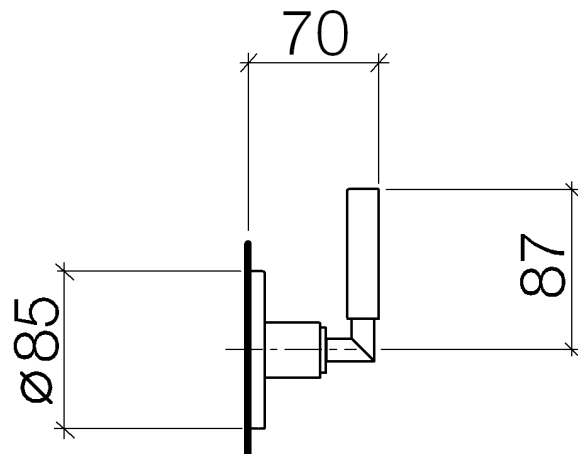


Product specifications

Exposed trim parts only, rough to be ordered separately

- Flange 3 3/8"

[ADA]





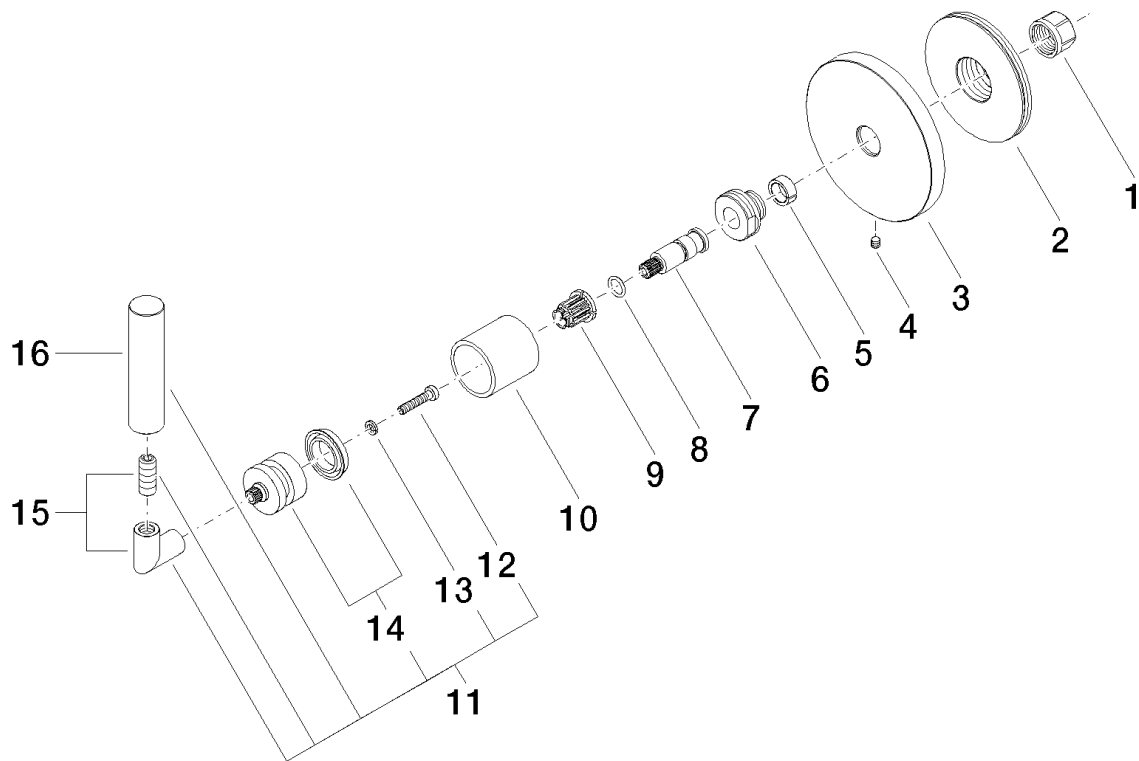
Surfaces

- chrome 36104882-00
- chrome 36104882-00
- matt platinum 36104882-06
- matt platinum 36104882-06
- platinum 36104882-08
- platinum 36104882-08
- matt white 36104882-10
- matt white 36104882-10
- matt black 36104882-33
- matt black 36104882-33

Accessories required

- Rough for two-way diverter; 35124970
- Rough for two-way diverter; 35124970
- Rough for three-way diverter; 35104970
- Rough for three-way diverter; 35104970

Exploded assembly drawing



Order quantity

No.	Article number	Name	Installation quantity
1	09233002390	nut	1
2	09210210990	cover	1
3	092789111ff	rosette	1
4	09311100790	pin	1
5	09141502090	ring	1
6	09240500290	nipple	1
7	09290602290	spindle	1
8	09141006090	seal	1
9	09121200290	fixing cap	1
10	092102144ff	sleeve	1
11	04208805200ff	handle	1
12	09303007590	screw	1
13	09301102990	disc	1
14	90121200700ff	base	1
15	04182002200ff	angle	1
16	092088052ff	handle	1