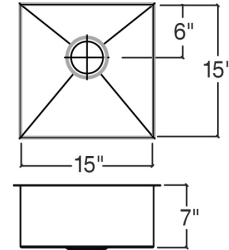


Project name: _____

Specifier: _____ Contractor: _____



Features

- Handcrafted in Canada using recycled American stainless steel
- Commercial grade - 16 ga material thickness
- Corrosion resistant 304 series stainless steel (18/10)
- Elegant no. 4 brushed finish (appliance finish)
- Highly efficient sound deadening pads
- Practical flat sink bottom and straight bowl sides
- Stylish and functional bowl bottom grooves
- Center 2" or 3-1/2" drain placement
- Limited lifetime warranty

Standards compliance

- ASME A112.19.3
- CSA B45.0
- CSA B45.4

Optional accessories

- Colander 205011
- Drain fitting 100085
- Drain fitting 100086

Sink dimensions

Model	Overall	Bowl	Depth	Cabinet Size*	Drain
003613	16" x 16 1/2"	15" x 15"	7"	21"	2"
003609	16" x 16 1/2"	15" x 15"	7"	21"	3 1/2"

* Cabinet Size is the Recommended Cabinet Size

Product specifications

Sink type to be undermount single bowl. Sink to be handcrafted from a single sheet of 16 ga stainless steel having 18/10 chrome/nickel content and a no.4 brushed finish. Sink to feature bowl bottom grooves, rear 2" drain placement and sound deadening pads. Sink overall dimensions to be 16" left-to-right and 16 1/2" front-to-back. Bowl dimensions to be 15" left-to-right and 15" front-to-back. Sink to feature 0mm radius corners. Sink to be Julien UrbanEdge® collection model 003613 with bowl depth of 7".

Warranty

Julien inc. offers a LIMITED LIFETIME WARRANTY on the fix components of its stainless steel sinks against defects of material and workmanship. For further details on our product warranty, please refer to our catalog or Web site.