



ELECTRIC TOWEL WARMERS INSTALLATION & OPERATING INSTRUCTIONS

948 Hercules Drive, Colchester, VT 05446 Phone: 800-698-9690 · Fax 802-654-7022

www.Mysoninc.com

CAUTION:

- | | |
|---|--|
| <ol style="list-style-type: none"> 1. Read this entire instruction manual thoroughly before beginning installation and save these instructions. 2. BE CERTAIN ELECTRICITY IS SHUT OFF AT THE MAIN PANEL BEFORE WIRING or servicing your Towel Warmer. 3. Your Myson Towel Warmer must be properly grounded. All wiring must be in accordance with the National Electric Codes and local codes and carried out by a licensed electrician. 4. Follow instructions accurately to make certain the Towel Warmer is properly attached to the wall. FAILURE TO FOLLOW THESE STEPS COULD RESULT IN PROBLEMS. 5. Do not use an abrasive or chlorine-based cleaner on the Towel Warmer. A mild detergent, used with a soft, damp cloth, will restore most units to their original luster. A soft, dry cloth may be used to polish. **Please make certain the unit is cold when it is cleaned. | <ol style="list-style-type: none"> 6. <i>This unit is not intended for use in a shower.</i> 7. To avoid a possible fire hazard, the Towel Warmer Tube that has the electric wiring affixed to it must remain in its intended position. DO NOT MOUNT THE UNIT HORIZONTALLY OR UPSIDE DOWN!
NOTE: Sticker denotes TOP of unit. 8. TO ENSURE FULL EFFICIENCY OF YOUR TOWEL WARMER, PLEASE FOLLOW ALL THE INSTRUCTIONS CAREFULLY. OBSERVING THE "CAUTION" NOTATIONS FOR EACH STEP. |
|---|--|

READ COMPLETELY BEFORE BEGINNING.

GENERAL: The Myson Electric Towel Warmer is permanently oil filled and has been designed to provide an all-year round service for warming and airing towels and articles of clothing; the larger models will take the chill off a normal sized room.

TOWEL WARMERS ARE HEAVY! WE RECOMMEND THAT TWO PEOPLE INSTALL THE TOWEL WARMER!

MYSON Electric Towel Warmers require 110 VAC. Ground Fault Circuit protection is required by most building codes; we recommend using a dedicated GFI for our Towel Warmers. Like all electric fixtures, there may be some restrictions on proximity to water sources; consult your Local Inspector. All electric models are UL/ETL approved with a back lit switch to indicate when the unit is ON. They are oil filled to provide a uniform heat to the full tube area. While these units are designed for continuous operation, most installations use a timer to control the ON/OFF Cycle.

STEP 1: INSPECT MYSON TOWEL WARMER

(Note: Replacement parts are available for purchase should a part become damaged or lost during installation.)

- A. Unpack the Myson Towel Warmer carefully to avoid any damage or loss of any part. When opening the box and unwrapping the Towel Warmer, be sure that the parts that come with the Towel Warmer, (i.e. – brackets, flanges, and #10 mounting screws), are not accidentally discarded.
- B. It is your responsibility to immediately inspect the Towel Warmer for any damage. Shipping damage should be reported immediately to your place of purchase.

- C. Check for enclosed Wire Encasement Kit (fig. 1) on the following Towel Warmer Lines: Angara, Ferlo (ECM), Lindi & Tamar.

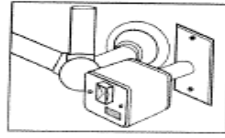


fig 1: Wire Encasement Kit

***Please note that the ERR & ECM models come with the Wire Encasement Kit box down, (at bottom of right vertical rail), whereas the EMR750, Classic, and Traditional lines come with the Wire Encasement Kit as shown in fig. 1, (box on right).**

Check for attached Discreet Wire Kit (fig. 2) on the following Towel Warmer Lines: Avonmore, Ferlo (ECMH), Fulda, Interlude & Jarua.

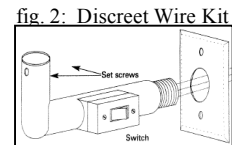


fig. 2: Discreet Wire Kit

Check for attached Tube Wire Kit (fig. 3) on the following Towel Warmer Lines: Awe, Bala, Buttermere, Dee, Inn, Salmon, Saxby, Thirlmere, Lekoro, Ullswater & Windemere.

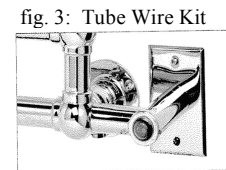


fig. 3: Tube Wire Kit

**IT IS YOUR RESPONSIBILITY TO IMMEDIATELY INSPECT FOR ANY DAMAGE.
SHIPPING DAMAGE SHOULD BE REPORTED IMMEDIATELY TO YOUR PLACE OF PURCHASE.**

STEP 2: INSTALLATION

(For The Lines That Come With The Wire Encasement Kit Shown in fig. 1: Angara, Ferlo(ERR, ECM& EMR750) & Tamar.)

- A. **Mount Wire Encasement Kit** to the back of the switch box with the provided screws, slipping wiring through the tube that returns to the wall.

⚠CAUTION: DO NOT TURN THE SWITCH BOX! DOING SO WILL CAUSE THE OIL SEAL TO BREAK!

- B. **Most MYSON Classic & Traditional Towel Warmers** have been designed with integral wall flanges. These will facilitate a permanent and secure mounting of the Towel Warmer to the wall. Make certain there is ample clearance on both sides of the Towel Warmer. The unit is supplied with the proper hardware for installation. Be sure wall construction is appropriate for hanging. **BACKING IS RECOMMENDED!**

1. Locate the model of the Towel Warmer being installed on the following page. Rough-in dimensions for a 2" x 4" standard electrical box are given for each model. Rough-in the box per dimensions given, providing 110 VAC on a dedicated 15 amp circuit to the box.
2. Align the Towel Warmer with the electric box; mount the top of the Towel Warmer loosely using the screws provided.
3. Follow the electrical connections per directions in Step 3 below.
4. The MYSON Towel Warmer should be fixed to the wall using the screws provided.

***PLEASE SEE PAGE 7 FOR MOUNTING INSTRUCTIONS FOR THE FOLLOWING MODELS: ERR, ECM, EMR, EINTH & ECMH**

****PLEASE SEE PAGE 8 FOR MOUNTING INSTRUCTIONS FOR THE FOLLOWING MODEL: EGAVH**

*****PLEASE SEE PAGE 9 FOR MOUNTING INSTRUCTIONS FOR THE FOLLOWING MODEL: EECOSH**

(For The Lines That Come With The Discreet Wire Kit Shown in fig. 2: Avonmore, Ferlo(ECMH), Fulda(EINTH) & Jarua.)

1. **Prior to hanging and connecting** the Towel Warmer, the 110 VAC on the dedicated 15 amp GFI circuit, must be roughed-in to a standard sized outlet box in the wall. The wire box should be positioned at the lower right corner of the Towel Warmer.
2. **At this point**, the mounting hardware should be located and fixed to the wall.
3. **The Discreet Wire Kit** will be turned to the inside when you receive the product. Loosen the two set screws and rotate the tube to a position 90 degrees to the wall. Re-tighten the set screws.

ΔCAUTION: FAILURE TO LOOSEN THE SCREWS BEFORE ROTATING THE TUBE WILL BREAK THE OIL SEAL!

4. Put the wires through the Wall Plate and fix the Wall Plate to the tube by tightening the large nut supplied with the kit.
5. Follow the electrical connections per directions in Step 3 below.

STEP 3: ELECTRICAL CONNECTIONS

ΔCAUTION: BE CERTAIN THAT ELECTRICITY IS TURNED OFF AT THE MAIN PANEL BEFORE WIRING IS DONE!

All wiring must conform to National and Local Codes which may vary by locale.

GENERAL: The MYSON Towel Warmer requires a dedicated GFI, 110VAC, 60 HZ power supply. Specific amperage is listed with the Towel Warmer dimensions. **IMPORTANT:** THIS APPLIANCE MUST BE GROUNDED!

- A. Electrical connections should be made as prescribed by the National Electric or Local Codes. The unit should be wired using 14 AWG or larger copper wire, and protected by a separate 15 amp circuit breaker.
- B. Make connections between Towel Warmer and house wiring using approved connectors to comply with National Electrical Codes. LIVE (black), NEUTRAL (white), and GROUND (green).

See Page 5 for **Wire Encasement Kit** Installation.

See Page 6 for **Discreet Wire Kit** Installation.

See Page ? for **Tube Wire Kit** Installation. (UNDER CONSTRUCTION)

- C. Energize Towel Warmer Circuit. Turn back-lit ON/OFF switch to the ON position to energize the heating element. Please allow 45 minutes to an hour for the Towel Warmer to come up to full heat, (140°F). **Note: Towel Warmer temperature may vary with the ambient temperature of the room.*

CAUTION: NO BARE WIRE OR WIRE STRANDS SHOULD BE VISIBLE AFTER MAKING CONNECTIONS.

IMPORTANT: THIS APPLIANCE MUST BE GROUNDED!

STEP 4: CONTROL OPTIONS

- A. **Manual Control:** Each unit has a UL/ETL approved ON/OFF switch, which is back lit for added safety and convenience.
- B. **Automatic Control:** A UL approved automatic or manual timer or thermostat may be used. Consult the manufacturer of these items for proper installation and connection to the Towel Warmer.

NOTE: All switches and control devices must be installed on the LOAD (black) side of the Towel Warmer circuit in compliance with the National Electrical Codes and Local Codes.

STEP 5: OPERATION & MAINTENANCE

Your electric MYSON Towel Warmer can safely and economically be left ON continuously without any detrimental effect either to the Towel Warmer or the articles on it.

However, when the Towel Warmer is ON, no more than two layers of towels or other similar fabrics should be draped over each rail. Although hot to the touch, the MYSON Towel Warmer is not hot enough to scorch or burn towels or other similar fabrics.

IMPORTANT: This appliance is intended for towels and similar fabrics that are washed in water. Fabrics that contain soap, laundry detergents, liquid fabric softeners or after bath oils residue may show what appear to be scorch marks. THIS IS SIMPLY THE DISCOLORATION OF THE RESIDUE. As stated, the Towel Warmer does not reach sufficient temperature to scorch fabrics.

Myson, INC. is not responsible for fabric discoloration due to laundry detergents, liquid fabric softeners, soap, or after bath oils.

REMINDER ON CLEANING YOUR MYSON TOWEL WARMER

Do not use an abrasive or chlorine-based cleaner on the Towel Warmer.

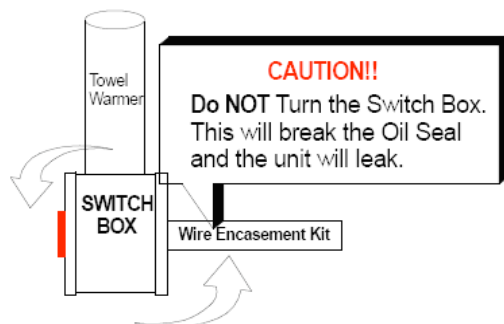
A mild detergent, (we recommend Flitz), used with a soft, damp cloth, will restore most units to their original luster.

A soft, dry cloth may be used to polish the Towel Warmer.

Please make certain the unit is cold when it is cleaned.

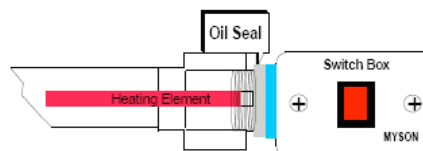


Wire Encasement INSTALLATION



CAUTION

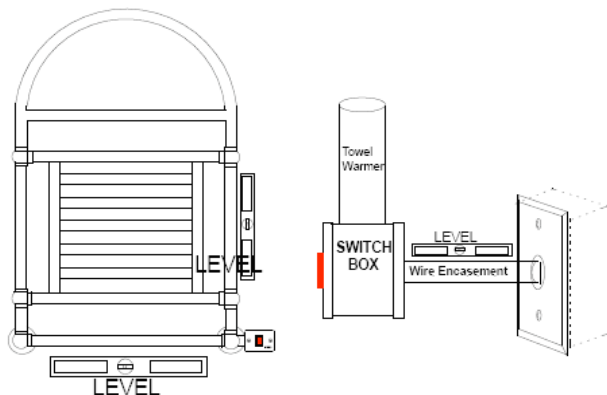
Towel Warmers can be heavy. Mounting a Towel Warmer takes more than 1 person to be done Safely and properly.



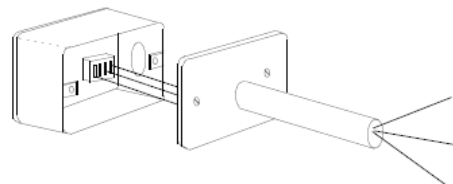
Step #1 Remove the back cover on the switch box.



Step #3 This part of the installation will require more than 1 person. Install wall plate on wall box and carefully position the towel warmer wire encasement kit tube in the wall plate hole. Use a level to assure the towel warmer is level and straight and the wire encasement kit is straight to the wall. Mark the hole locations on the mounting brackets and secure with the mounting screws provided with the kit.

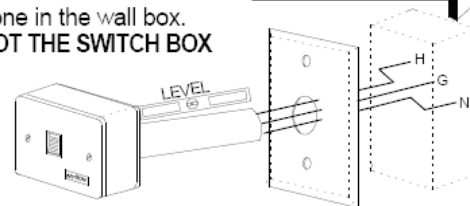


Step #2. Place the wires from the switch box through the wire encasement kit then then attach the wire encasement kit to the back of the switch.



Step #4
Wire terminations are done in the wall box.
NOT THE SWITCH BOX

Wire Terminations are in a Single Gang Box.



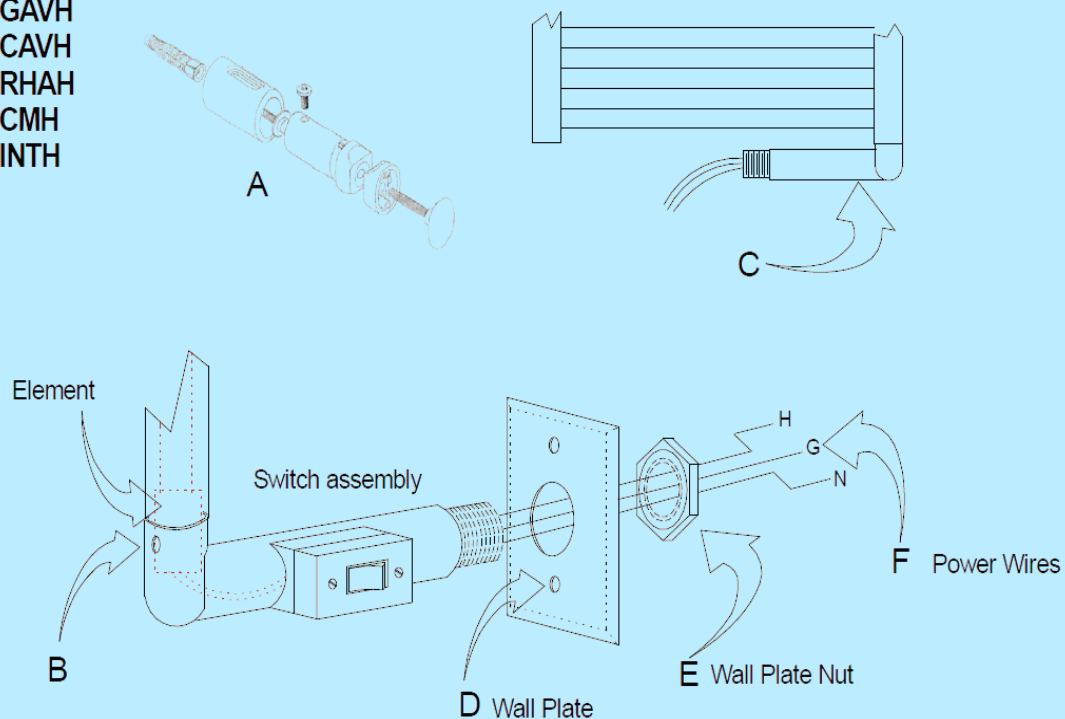


PTC DISCREET ELEMENT INSTALLATION

Note: All work should be done by a trained service professional.

The following models are equipped with the PTC discreet element:

EECOSH
EGAVH
ECAVH
ERHAH
ECMH
EINTH



NOTE: Make sure main power to the unit is disconnected.

NOTE: Do not unscrew the element, fluid may leak out.

- (A) Attach mounting hardware to wall in desired location.
- (B) Loosen set screws.
- (C) Rotate switch assembly clockwise to be perpendicular to the towel warmer.
- (D) Position wall plate over the switch assembly.
- (E) Tighten wall plate nut.
- (F) Connect wires in the junction box.

Secure the towel warmer to the mounting hardware (A) and attach the wall plate (D) to the junction box. Tighten set screws (B).

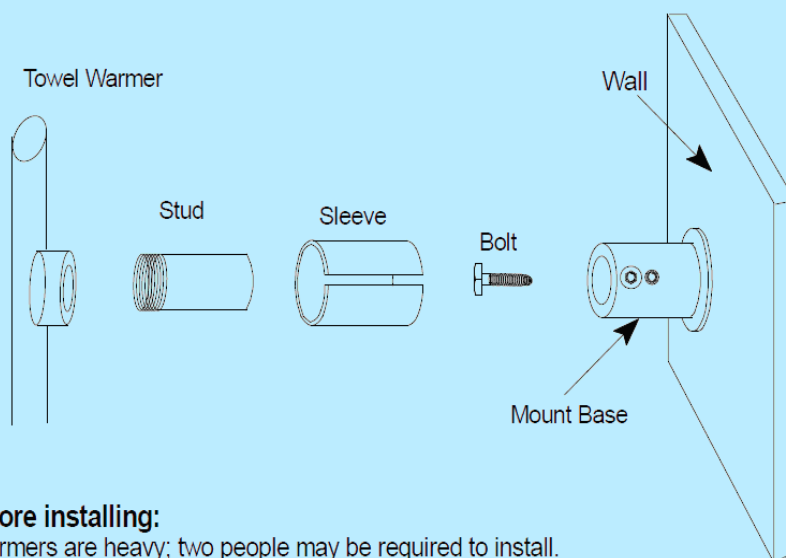
NOTE: The set screws will not necessarily line up with the flats on the element.



MYSON

FIXSIX Mounting Kit

Mounting Diagram for EINTH/ERR/EMR/ECMH/ECM Myson part number (FIXSIX)



NOTE: Before installing:

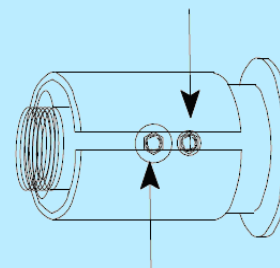
1. Towel Warmers are heavy; two people may be required to install.
2. Have adequate blocking for secure mounting to wall.

Installing the towel warmer:

NOTE: Map out the location of the towel warmer on the wall. The unit must be straight and level. MYSON has detailed drawings of the towel warmers available on our web site.

1. Secure the Mount Base to the wall with the mounting bolt.
2. Screw the Stud into the towel warmer.
3. Slide the sleeve on to the Mount Base.
4. Slide the towel warmer Stud into the Mount Base.
5. Adjust the towel warmer so that it is level and straight.
6. Secure the Mount Base set screw to hold the Stud in place.
7. Adjust the Sleeve to cover the exposed Stud attached to the towel warmer and tighten the Screw to secure the Sleeve in place.

Set screw for securing the Stud in the Mount Base

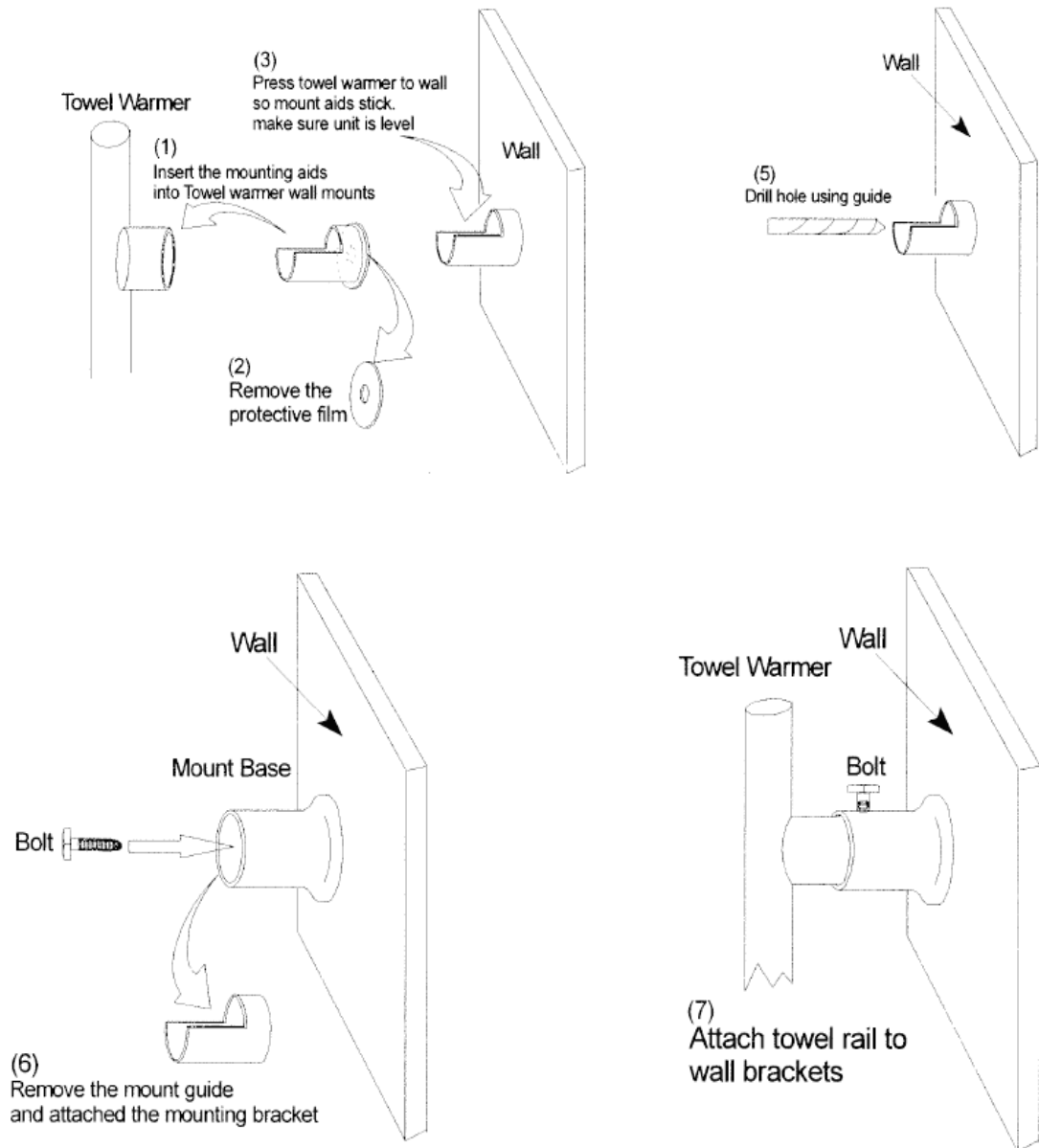


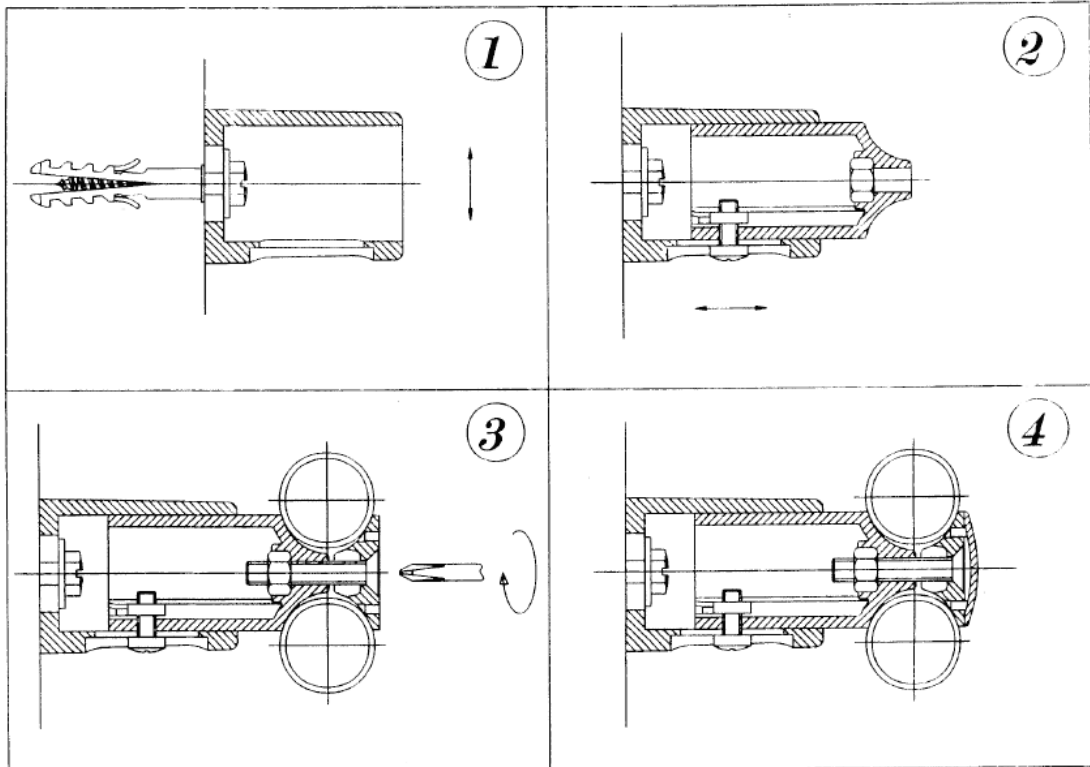
Screw for securing the Sleeve

* **NOTE:** The Interlude model insert studs have hooks that interface with the welded brackets on the towel warmer.

MYSON P/N: FIXINT

Mounting Diagram for ERHAH / EGAVH





F6021390

MOUNTING BRACKET COS/ECOS

