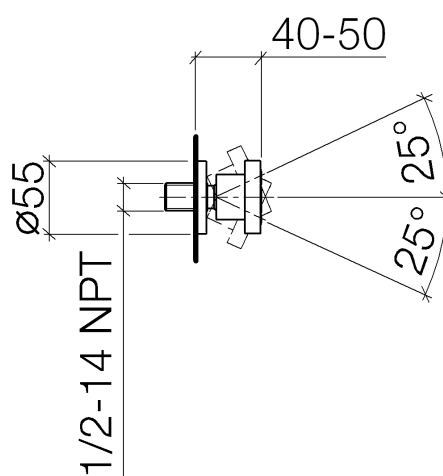




Product specifications

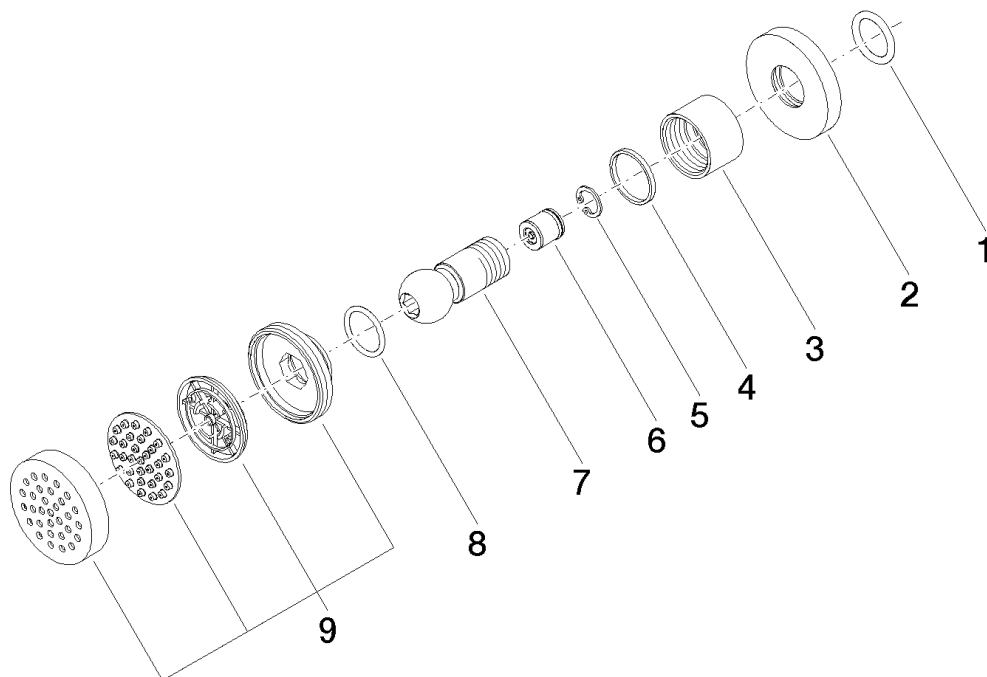
- Flange diameter 2 1/8"
- Descaling system
- 25 degree swivel in each direction
- Water flow rate limited to max. 1.32 gpm
- 1/2" connection



Surfaces

- | | |
|-----------------|-------------|
| • chrome | 28518979-00 |
| • chrome | 28518979-00 |
| • matt platinum | 28518979-06 |
| • matt platinum | 28518979-06 |

Exploded assembly drawing



Order quantity

No.	Article number	Name	Installation quantity
1	09141002690	seal	1
2	092722003ff	rosette	1
3	092330026ff	nut	1
4	09141501090	ring	1
5	09160101490	ring	1
6	09230104890	back-flow preventer	1
7	092140016ff	connection	1
8	09141001590	seal	1
9	90120502700ff	casing (completely)	1

