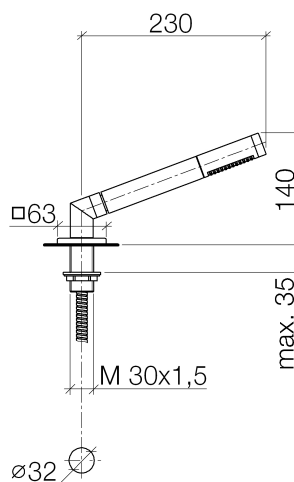




Product specifications

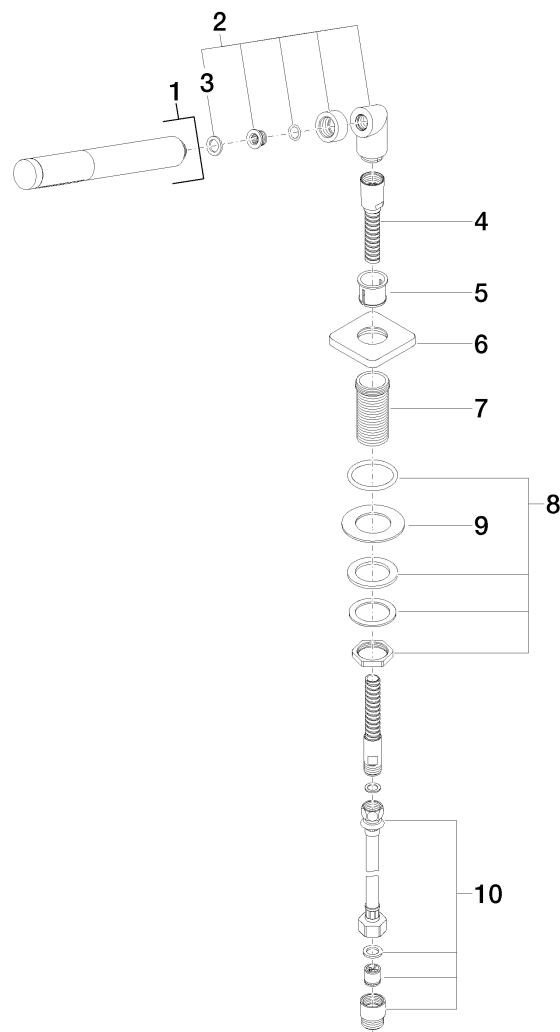
- Hand shower with descaling system and back flow preventer
- 1 1/4" hole diameter
- Metal shower hose 88 5/8", consisting of 1 pc. 19 5/8" chrome plated metal hose and 1 pc. 68 7/8" flex line
- Flange 2 1/2 x 2 1/2"
- 20° x 1/2" x 1/2" angle
- Shower hose guide
- Water flow rate limited to max. 2.38 gpm



Surfaces

- | | |
|-----------------|-------------|
| • chrome | 27702710-00 |
| • chrome | 27702710-00 |
| • matt platinum | 27702710-06 |
| • matt platinum | 27702710-06 |

Exploded assembly drawing



Order quantity

No.	Article number	Name	Installation quantity
1	28010979ff0010	shower	1
2	04240418700ff	nipple	1
3	09142000290	seal	1
4	28322970ff	hose	1
5	09184008590	sleeve	1
6	092771007ff	rosette	1
7	093001090-07	sleeve	1
8	0423100324690	fixing set	1
9	09301106090	disc	1
10	1250597090	hose	1

