

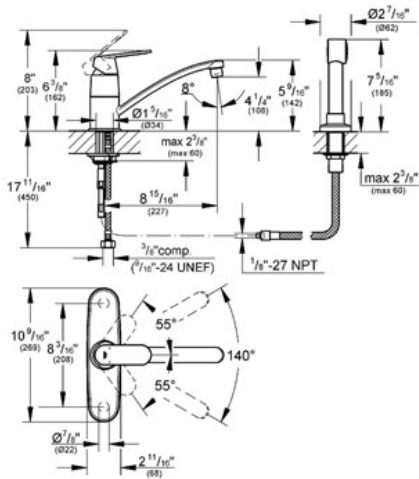
EUROSMART COSMOPOLITAN 1/2" Single-lever kitchen faucet

MODEL # 31353

Pure Freude an Wasser



GROHE America, Inc | 200 North Gary Avenue, Suite G, Roselle, IL 60172
Phone: +1 (800) 444-7643 | Fax: +1 (800) 225-2778 | us-customerservice@grohe.com



Product Description:
1/2" Single-lever kitchen faucet

Standard Specification:

- GROHE Starlight® finish
- GROHE SilkMove® ceramic cartridge
- Single hole installation
- Metal lever
- Swivel spout
- Swivel area 120°
- Volume control
- With side spray
- Includes 10" escutcheon
- Stainless steel braided flexible supplies
- Quick installation system
- Max Flow Rate 1.75 gpm (6.6 L/min)

Applicable Codes & Standards:

- Energy Policy Act of 1992
- NSF 61
- ASME A112.18.1/CSA B125.1

Color:

- 31353 000 chrome

