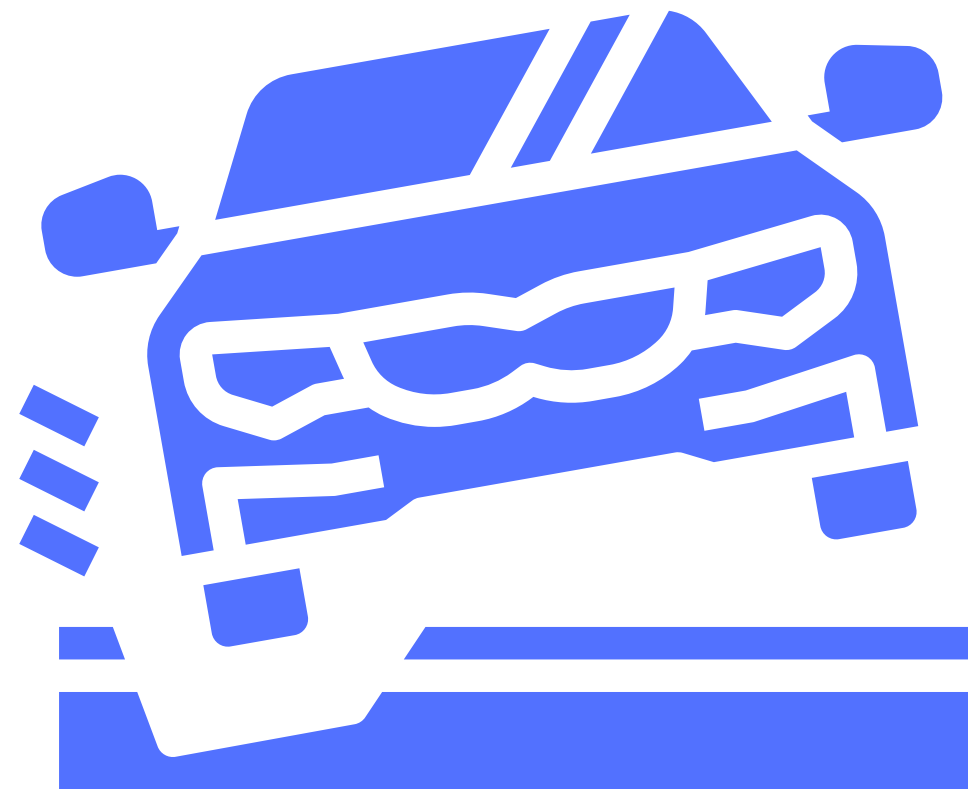


Pothole Index: statistics and survey data for roads in England



The following data was gathered through **Freedom of Information (FOI) requests**.

We made these to county councils across England and our **Quotezone.co.uk** analysts compiled the responses.

The results revealed a **40% year on year increase in reported potholes** and examined which areas of the country are worst affected.

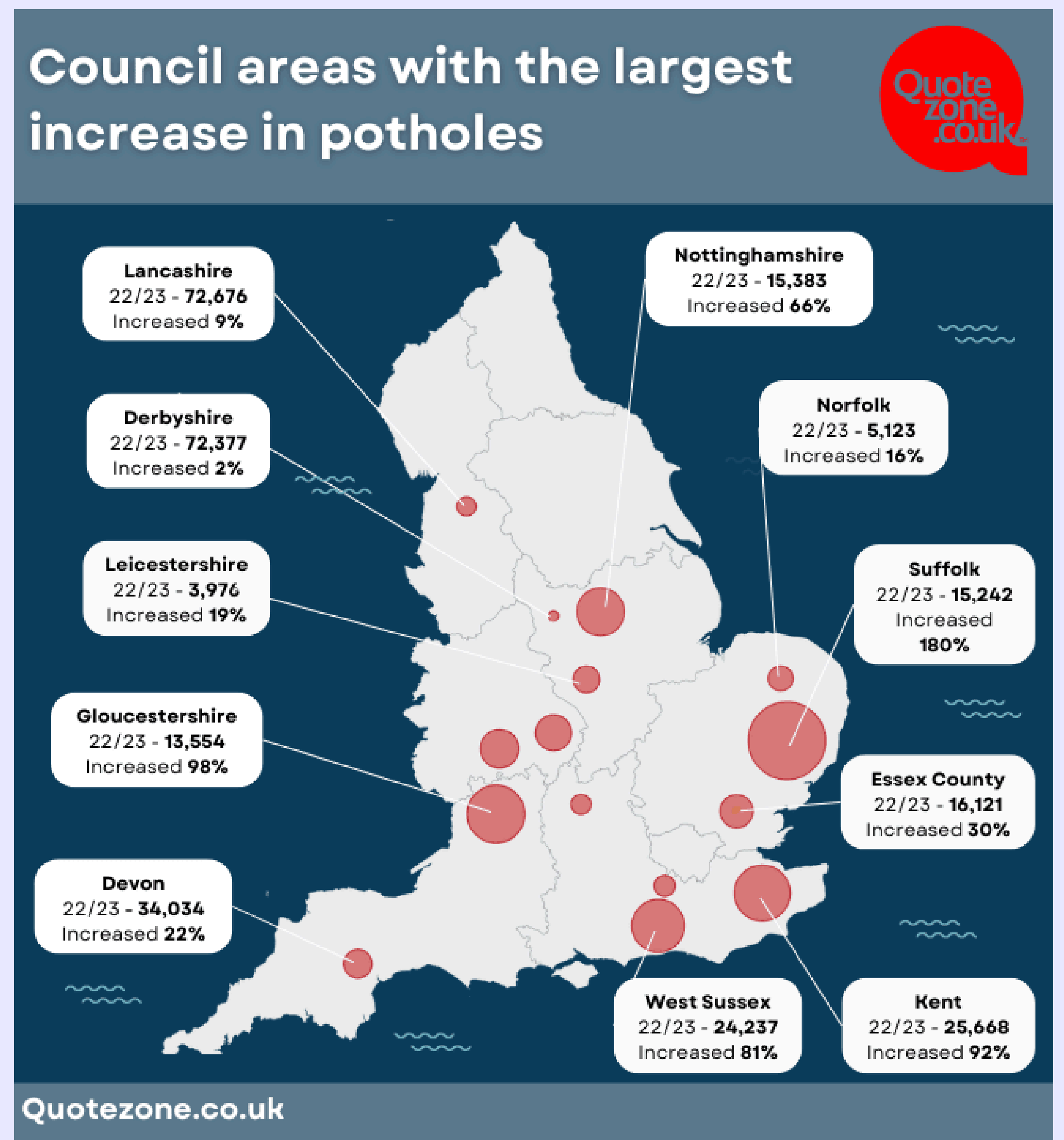
92% of UK drivers say their local areas are getting worse.*

Areas with Increasing Potholes

Council area	2021 – 2022	2022 – 2023	% Increase
Suffolk	5,444	15,242	180%
Gloucestershire	6,845	13,554	98%
Kent	13,392	25,668	92%
West Sussex	13,404	24,237	81%
Nottinghamshire	9,254	15,383	66%
Worcestershire	3,277	4,664	42%
Warwickshire	2,560	3,477	36%
Essex County	12,435	16,121	30%
Devon	27,787	34,034	22%
Leicestershire	3,338	3,976	19%
Norfolk	4,402	5,123	16%
Surrey	44,804	49,813	11%
Oxfordshire	24,254	26,575	10%
Lancashire	66,897	72,676	9%
Derbyshire	71,135	72,377	2%
Lincolnshire	12,517	12,357	-1.30%
Staffordshire	23,058	16,156	-30%
AVERAGE:	20,537	24,300	40%

Data obtained through a Freedom of Information (FOI) request, all council areas in England were asked for data, the following 17 councils responded. Due to variations in data collection methods across councils, some figures represent totals for the calendar year (e.g. January to December), while others are for the financial year (e.g. April to March) or other 12-month periods. However, all figures represent totals for a 12-month period within the specified years.

Pothole Increase %



Quotezone Survey Data

Do you think your local area is getting worse for potholes?	
Yes	92%
No	8%
Not applicable	1%
Did you / they claim on the car insurance to have it fixed or pay for it out of pocket?	
Paid to have the damage fixed	83%
Not applicable	11%
Claimed on the car insurance	6%
How long would you estimate it takes to fix potholes in your area?	
Some have never been fixed	29%
6 months +	15%
3 – 6 months	13%
Over a year	12%
4-6 weeks	7%
6-8 weeks	7%
2-4 weeks	6%
1-2 weeks	5%
Under a week	3%
Not applicable	2%

Do you think potholes are fixed quickly enough?	
No	96%
Yes	3%
Not applicable	1%
Do you ever report potholes, either to the local authorities or on your car navigation app?	
No	59%
Yes – to the local authorities	37%
Yes – on my car navigation app	3%
Not applicable	1%
What do you think needs done to fix the current pothole problem?	
More money invested in our roads	30%
Better quality materials to fix repairs	26%
A clearer reporting tool so the public can raise awareness of problem areas	16%
More staff employed to help and monitor the situation	12%
Specialist insurance for pothole only damage	5%
More guidance on how to handle potholes when behind the wheel	5%
Diversions put in place to avoid hazardous areas	4%
Not applicable / other	1%

*Quotezone.co.uk's findings are based on a randomised survey of 1,000 respondents across the UK during July 2024, which represents a margin of error of approximately 5% at a 95% confidence level.