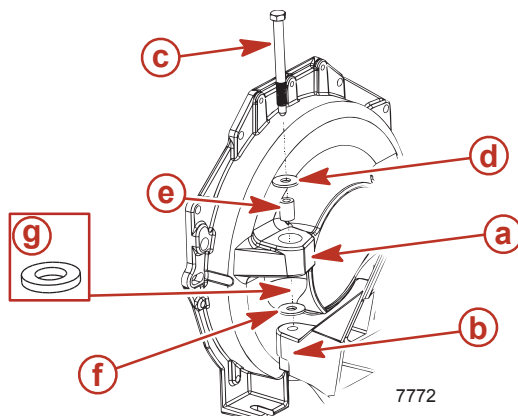
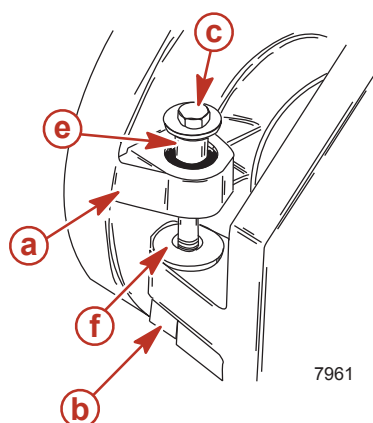


6. Install both rear engine mounting bolts and hardware and torque. Do not relieve hoist tension.



- a** - Rear engine mount
- b** - Inner transom plate mount
- c** - Bolt
- d** - Washer
- e** - Spacer
- f** - Fiber washer
- g** - Stainless steel washer (optional spacer kit)

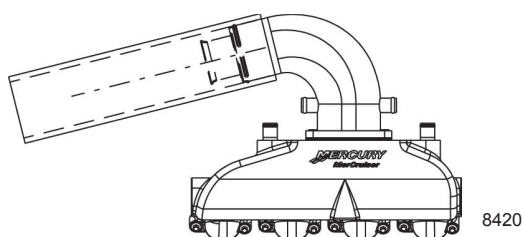
Description	Nm	lb. in.	lb. ft.
Rear engine mounting bolts	47		35

7. Loosen both adjusting nuts on front engine mounts to allow for adjustment during alignment.
8. Attach the front mounts to the stringers.
9. Remove the engine hoist.

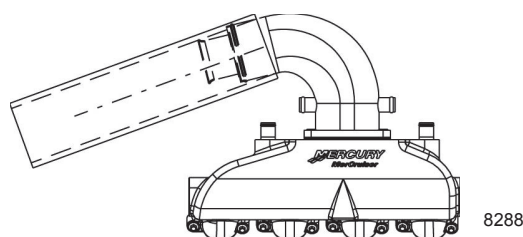
Exhaust System Hose / Tube Connection

NOTICE

Hot spots in exhaust hoses can damage hoses and cause leaks. Ensure that discharge water from the exhaust elbow flows without restriction through all hoses and fittings.



Correct alignment



Incorrect connection

IMPORTANT: Exhaust hoses/tubes should be secured at each connection with at least 2 hose clamps.