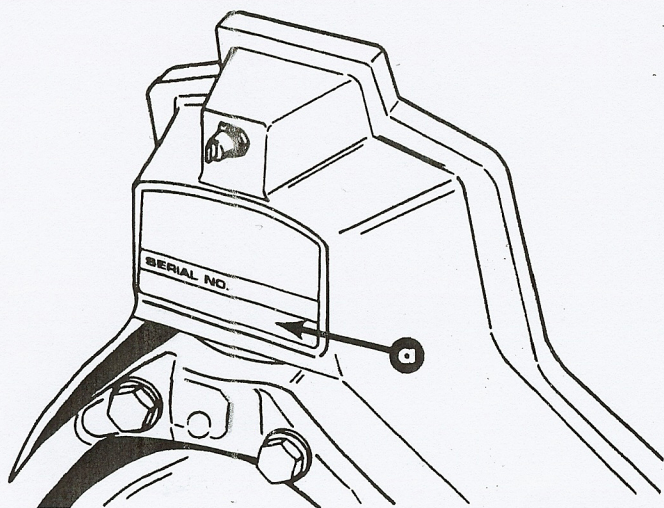


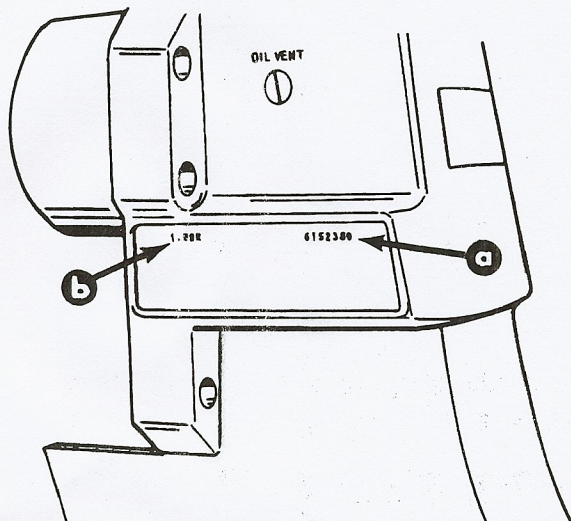
Serial Number Locations



23254

Transom Assembly Serial Number Location

a - Transom Assembly Serial Number



23254

Sterndrive Unit Serial Number Location – Port Decal

a - Sterndrive Unit Serial Number
b - Sterndrive Unit Gear Ratio

Hi-Performance Boating

Written by marine engineers, order Part No. 90-86168, entitled "Hi-Performance Boat Operation."

Sterndrive Unit 10-Hour Break-In Period (New or with Replacement Gears)

1. Avoid full throttle starts.
2. DO NOT operate at any one constant speed for extended periods of time.
3. DO NOT exceed 75% of full throttle during the first 5 hours. During the next 5 hours, operate at intermittent full throttle.
4. Drive unit should be shifted into forward gear a minimum of 10 times during break-in, with run-in time at moderate RPM after each shift.

Decal Application

Decal Removal

1. Mark decal location before removal to assure proper alignment of new decal.
2. Carefully soften decal and decal adhesive with a heat gun or heat blower while removing old decal.
3. Clean decal contact area with a 1:1 mixture of isopropyl alcohol and water.
4. Thoroughly dry decal contact area and check for a completely cleaned surface.

TEMPERATURE

IMPORTANT: Installation of vinyl decals should not be attempted while in direct sunlight. Air and surface temperature should be between 60°F (15°C) and 100°F (38°C) for best application.

SURFACE PREPARATION

IMPORTANT: Do not use a soap or any petroleum based solvents to clean application surface.

Decal Application

NOTE: Ensure area where decal will be applied is clean.

1. Remove backing from decal.
2. Apply to drive unit.
3. Carefully smooth decal on surface.