



ANNA

BLOM

Please contact artist for enquiries

annabloomingshell@gmail.com

www.bloomingshell.com

[@annabloomingshell](https://www.instagram.com/annabloomingshell)



RCA2022 degree show at Royal College of Art, London 2022

Please contact artist for enquiries

annabloomingshell@gmail.com

| www.bloomingshell.com

| [@annabloomingshell](https://www.instagram.com/annabloomingshell)

STATEMENT



HER SHOES

2022

Found object

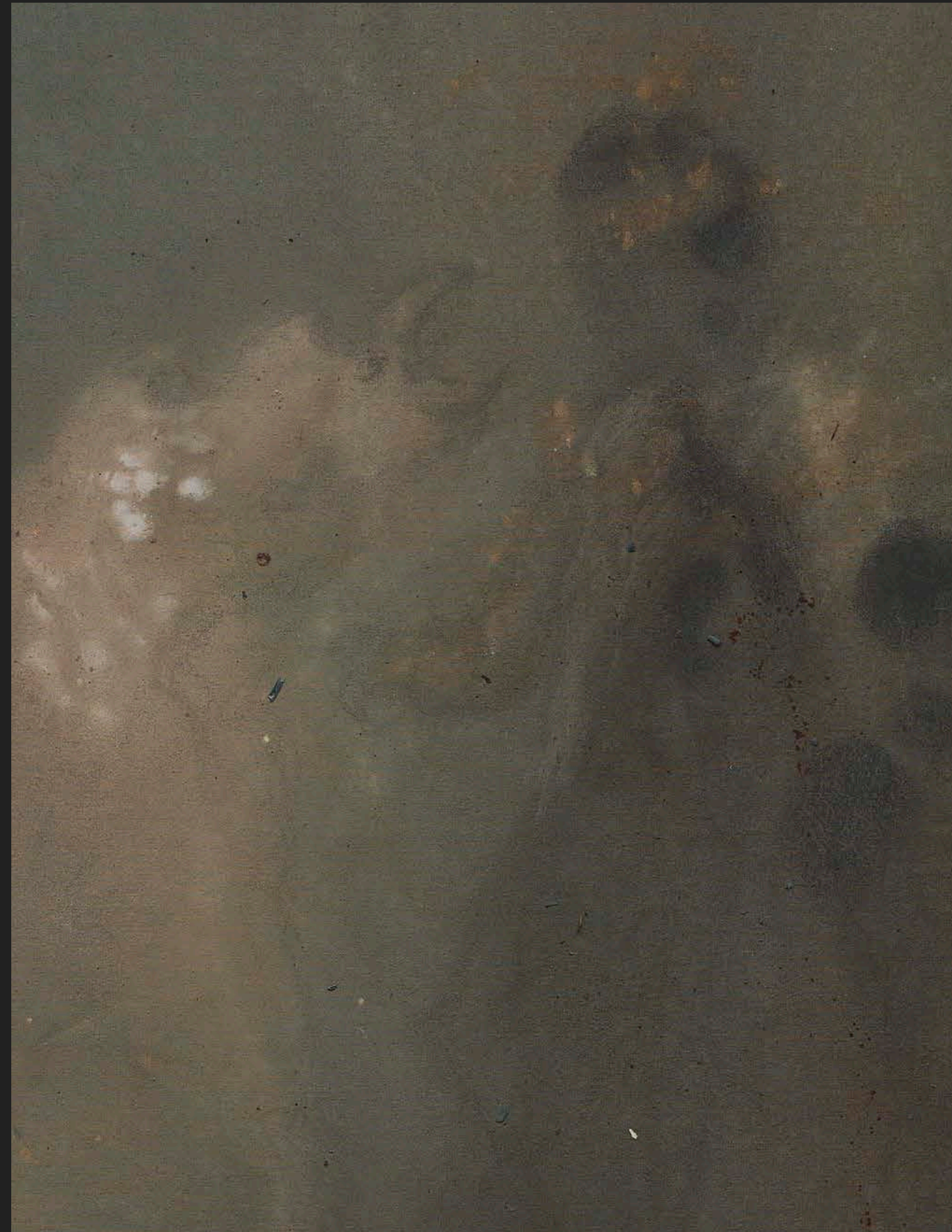
RCA2022 degree show, London

My work is personal, a cut of life and a continuous narrative of immediate surroundings. I strive to deconstruct the fragile details which provide the warp and weft, the baseline of our daily existence. With a diaristic methodology, I study nuances of isolated mundane moments, discovering the overlooked emotions and unseen objects that occupy our meticulously assembled environment.

I am driven by the need for an understanding of, and find comfort in, how we weave our existence together. By collecting sketches, photographs, found objects and white noise, I create an archive of micro situations that come together to form paintings. The stains on the canvas are layered interpretations of the liminal spaces we inhabit and explore how we connect, combine, and construct ourselves within them.

I compose my practice by sitting with fundamental daily shapes, whether they are objects, spaces, or emotions, wrestle with them and interrogate their life cycles, from conception to discarding.

These particulars, either emotional or physical, are given little appreciation but, in my opinion, have a powerful and undeniable influence on its participants. By lending these influences credence, they can provide us with resilience and courage in the nonsensical unpredictability of our ordinary lives.



ROARING AT OTHERS
2022
Acrylic, graphite,
situational debris on canvas
180x150cm



IT TURNED ON ME
2022
Acrylic, graphite, situational debris
on canvas, 90x70cm



TIME LINES
Safe House, London 2022

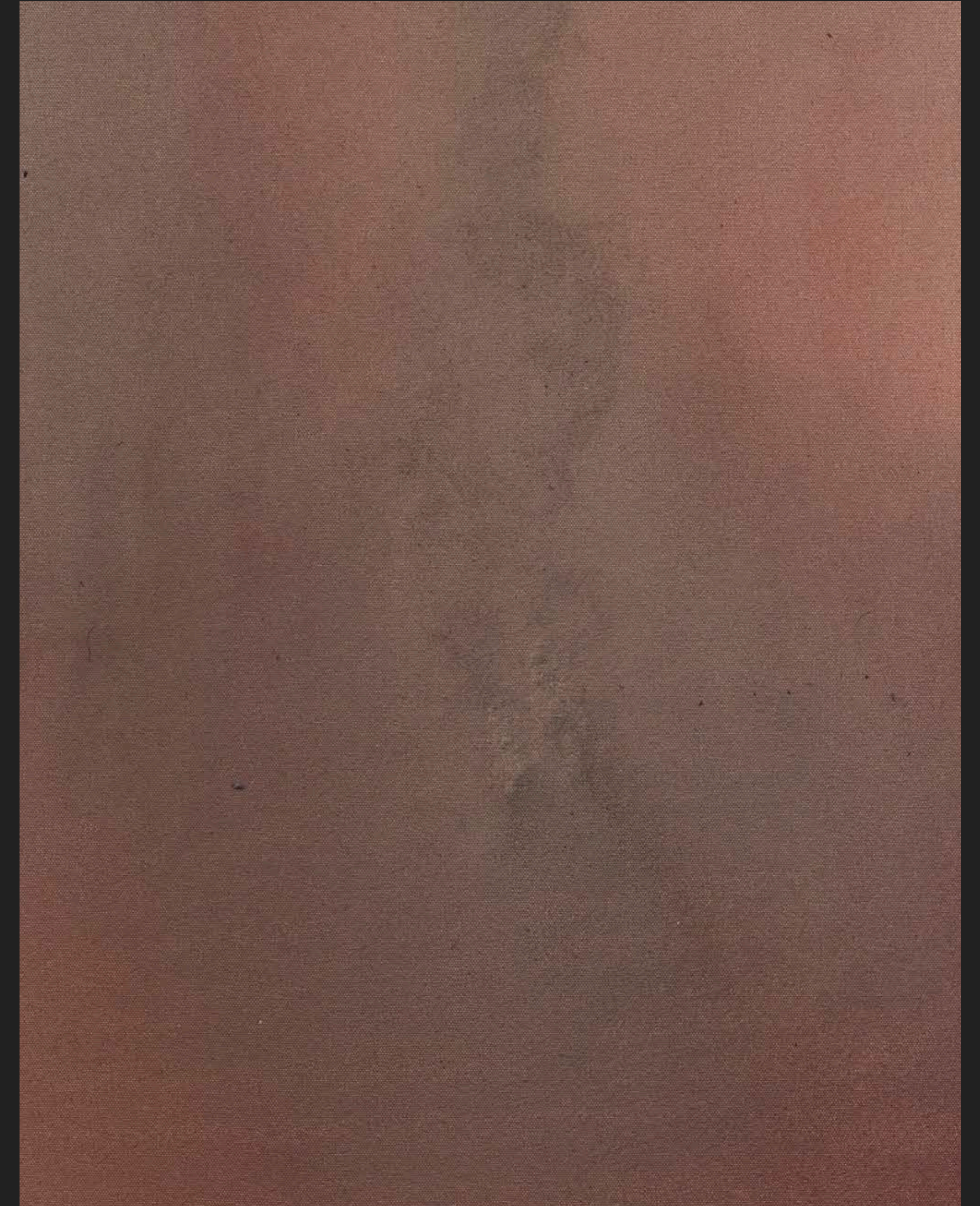
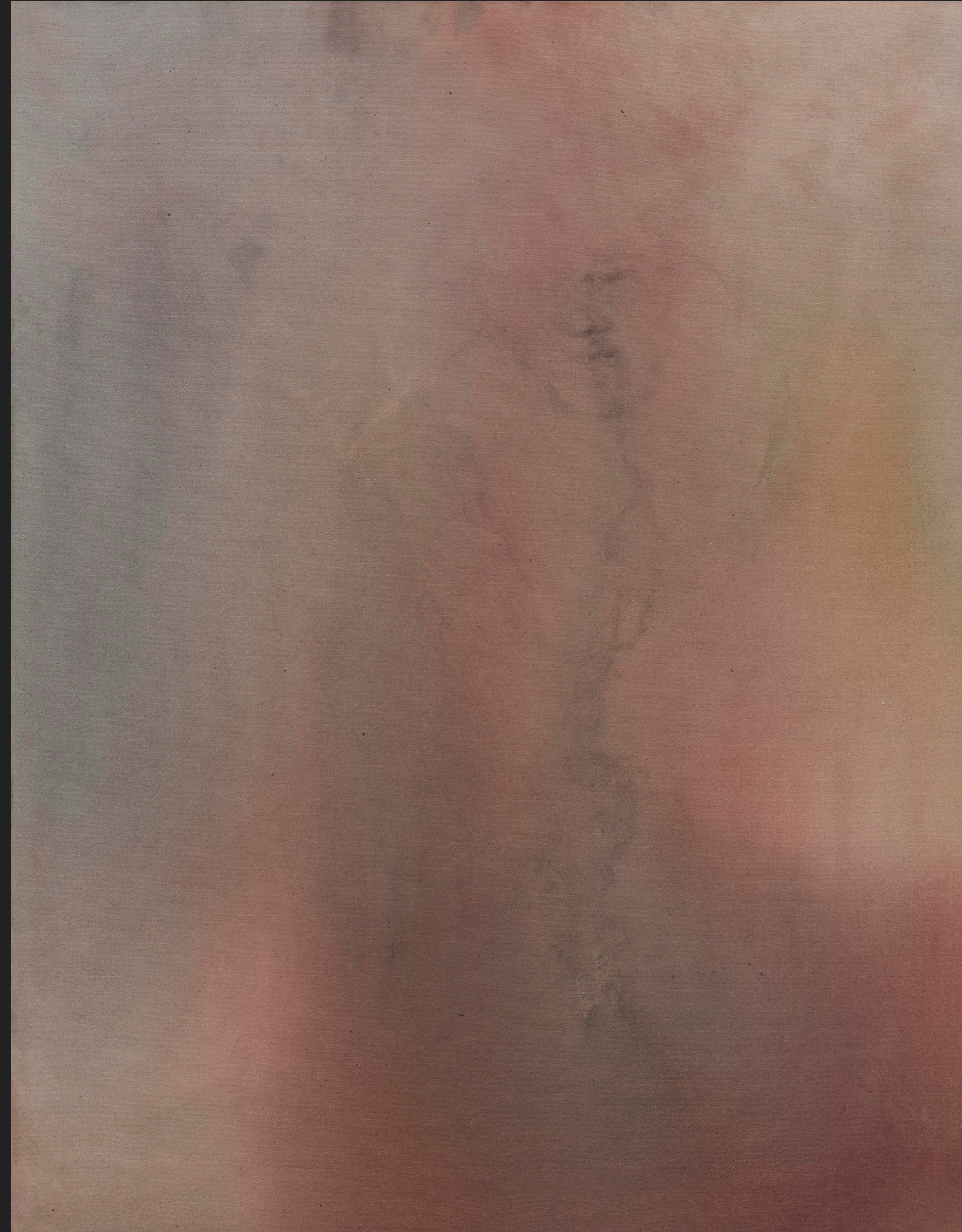
Please contact artist for enquiries

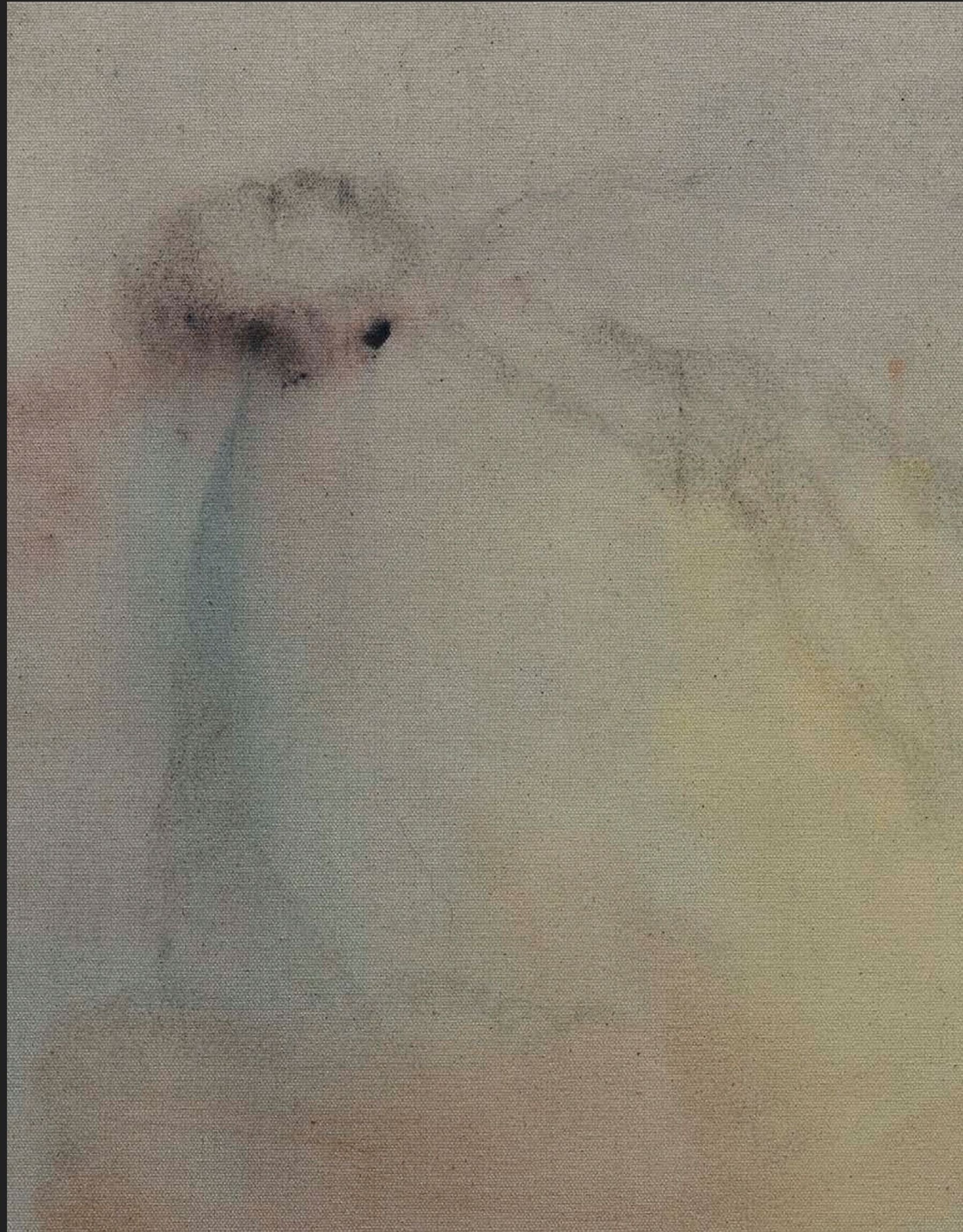
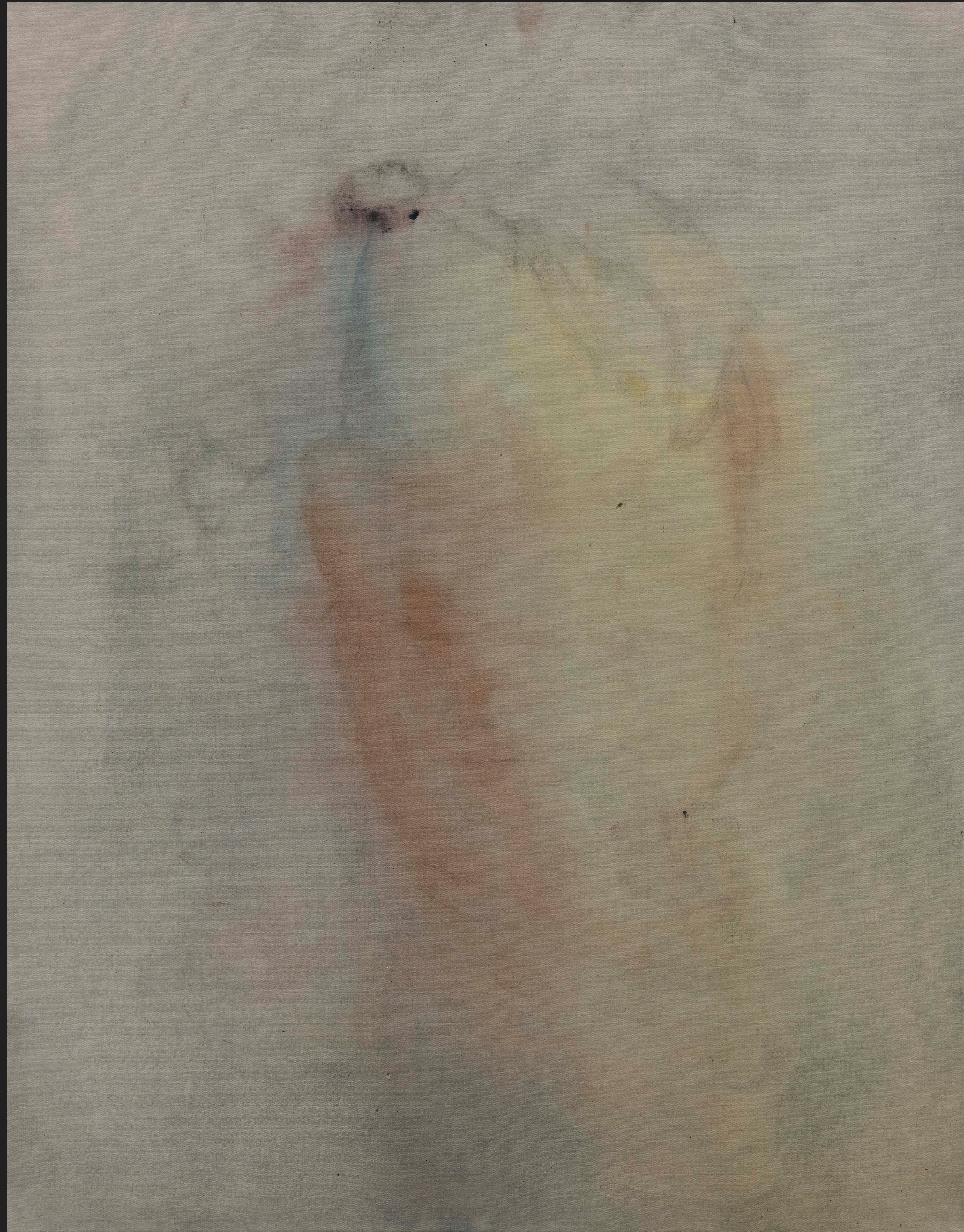
annabloominghell@gmail.com

| www.bloominghell.com

| [@annabloominghell](https://www.instagram.com/annabloominghell)

CINDER
2022
Acrylic, graphite,
situational debris on
canvas, 90x70cm





THREE PHASES
2022
Acrylic, graphite,
situational debris
on canvas, 90x70cm

PENUMBRAL ZONE
Gallery 46, London 2022

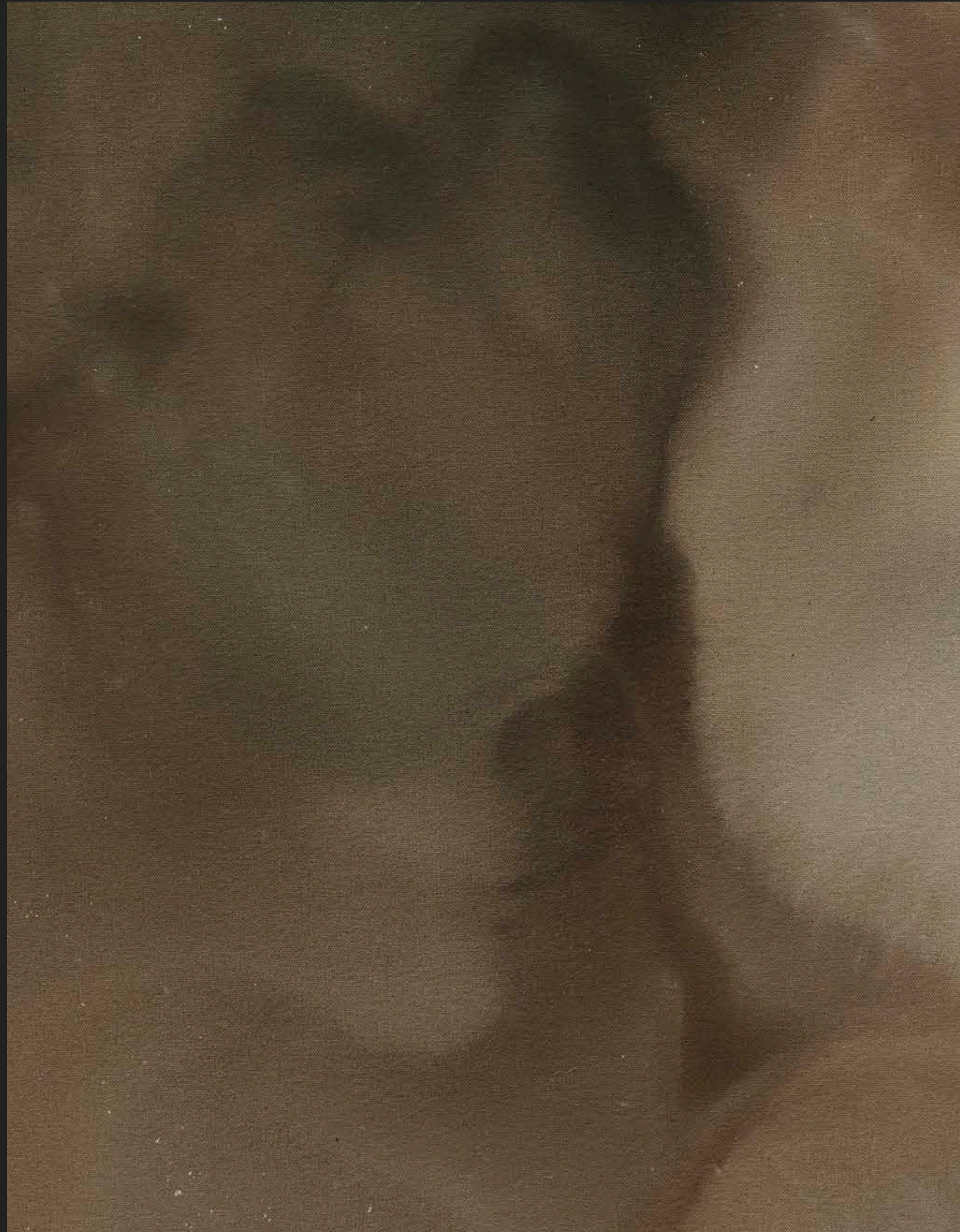


Please contact artist for enquiries

annabloomingshell@gmail.com

| www.bloomingshell.com

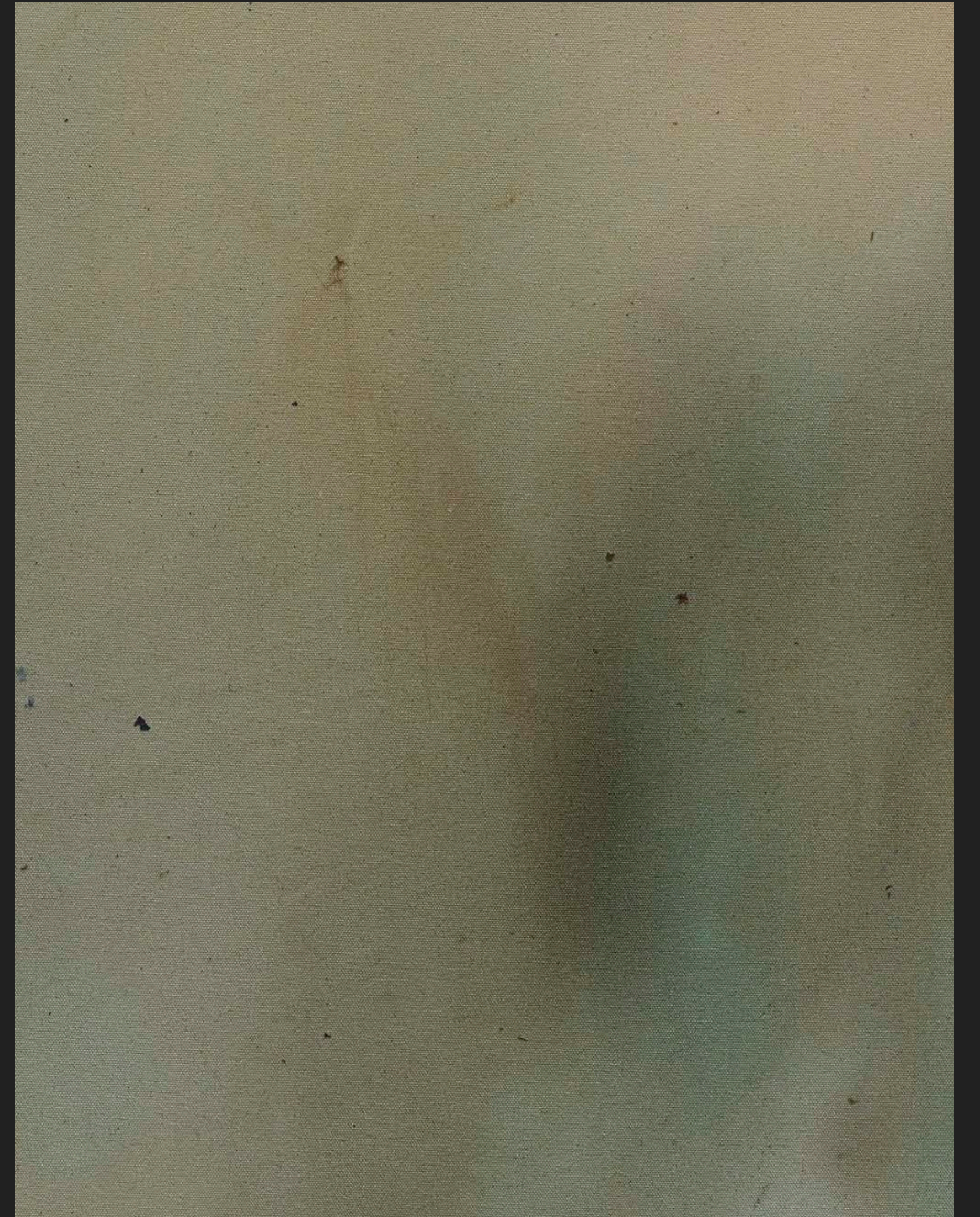
| [@annabloomingshell](https://www.instagram.com/annabloomingshell)



PERMISSION TO KEEP YOU
(PERIPHERAL III)
2022
Acrylic, graphite, situational
debris on canvas, 90x70cm

DEVOTED WARMTH
(PERIPHERAL I)
2022

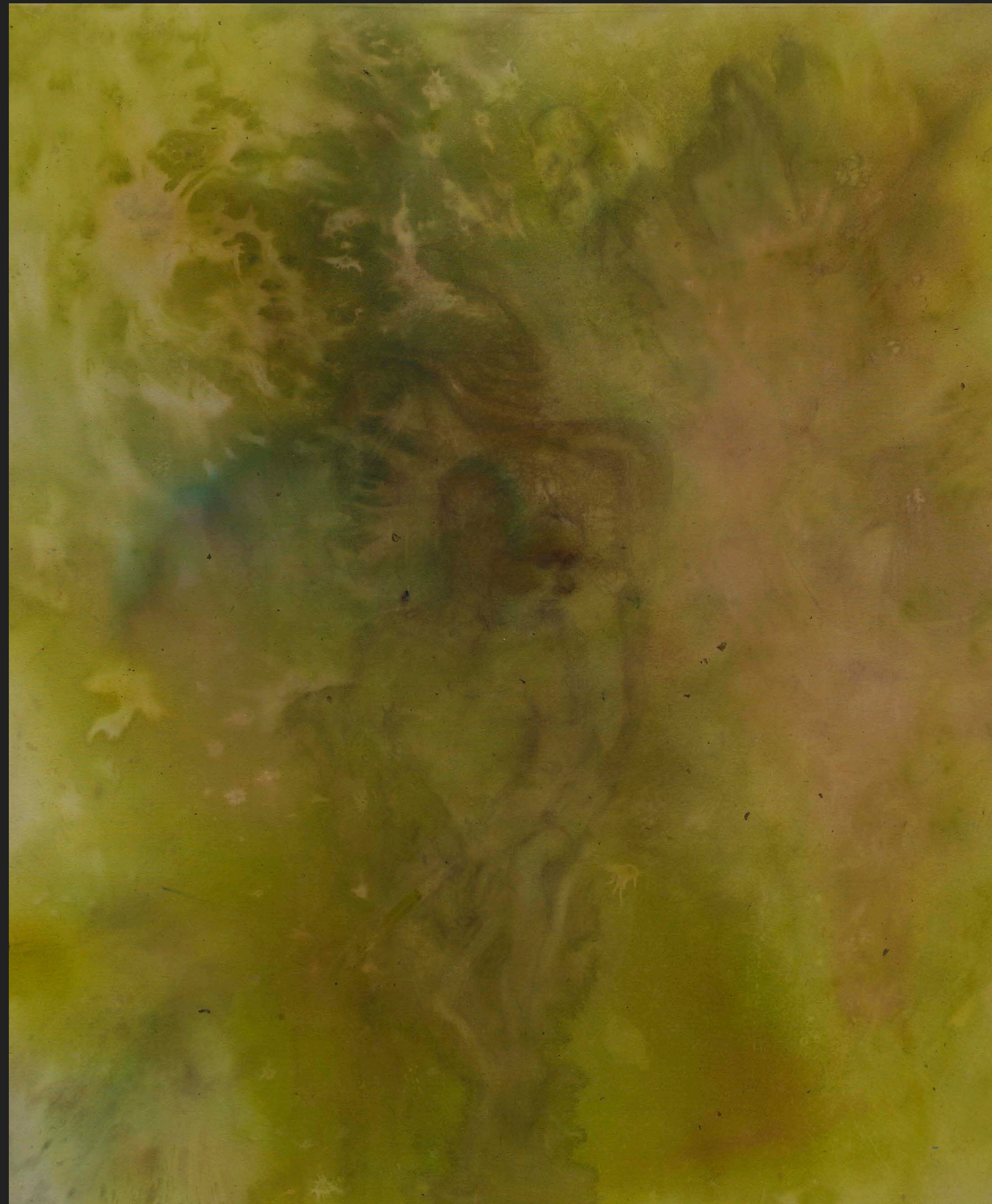
Acrylic, graphite, situational
debris on canvas, 90x70cm





WITHERING
2022
Acrylic, graphite,
situational debris on
canvas, 90x70cm

ABSENCE OF SPRING
2022
Acrylic, graphite, situational
debris on canvas, 180x150cm



ANNA BLOM CV

Anna Blom is a Swedish born, London based artist who recently completed a Master in Painting at the Royal College of Art. She holds a First-Class Honours Bachelor of Fine Art Painting from UAL Wimbledon College of Arts (2020) and has curated, led and participated in a number of group exhibitions and independent solo installations in the UK, such as 24 Cork Street and Copeland Gallery. Anna divides her practice between south London studio and Stockholm, where she works in an interdisciplinary manner combining painting, drawing, sound, words and found objects, in arrangements of a continuous narrative in a diaristic archival methodology.

PERSONAL INFO

Email annabloomingshell@gmail.com
Website www.bloomingshell.com
LinkedIn [Anna Blom LinkedIn](#)
Instagram [@annabloomingshell](#)

EDUCATION

2022 MA Painting
Royal College of Art, London

2020 BFA Painting [First Class Honours]
UAL Wimbledon College of Arts, London

1998 Commercial Art Business programme
Pace University, New York

PROFESSIONAL APPOINTMENTS

2011 ➤ Artist & Creative Consultant at BloomingHell

1998 - 2010 Commercial art buying for an eclectic mix of fashion & brands (see LinkedIn)

EXHIBITIONS

2022

TIMELINES, Group exhibition, Safe House 1 & 2 Copeland Gallery, London 23 March – 27 March
PENUMBRA ZONE, Group exhibition, Gallery 46, London 8 April – 14 April
RCA DEGREE SHOW, Group exhibition, Royal College of Art, London 25 June – 5 July
HOME, Group exhibition, Regency Townhouse, Hove 12 July – 17 July
ALUMNI UAL, Group exhibition, Chelsea College of Art, London 13 July – 17 July
RESIDUE, Duo exhibition, Orleans House Gallery, London 13 Oct - 27 Nov
GATHERING FUEL IN VACANT LOTS, Trio exhibition, London, TBC

2021

THE CEILING WITH A TRANQUIL EYE, Curated & led group exhibition, 24 Cork Street Gallery, London 15 July – 24 July
RCA WIP EXHIBITION, Online group exhibition, 29 January – 30 March

➤ 2020

UAL SHOWCASE, Online group exhibition, 28 July 2020 – 30 September, London 2020
AS LIFE LIVES ON, Solo exhibition, Barnes Common, London 25 May 2020
PENULTIMATUM, Group exhibition, Copeland Gallery, London 6 March - 8 March 2020
SAND PIT, Curated & led group exhibition, Lion House, London 10 May - 12 May 2019
EVERYDAY FORMS, Co-curated & led group exhibition, Four Corners Gallery, London 19 March - 23 March 2019
TRACES, Group exhibition, Central St Martins SU Project Space, London 22 November - 30 November 2018
LIFE, Co-curated group exhibition, Wimbledon College of Arts, London 16 May - 23 May 2018

COMMISSIONS / PUBLIC ART PROJECTS

‘Borggren’, 2021, London for Isabelle Borggren