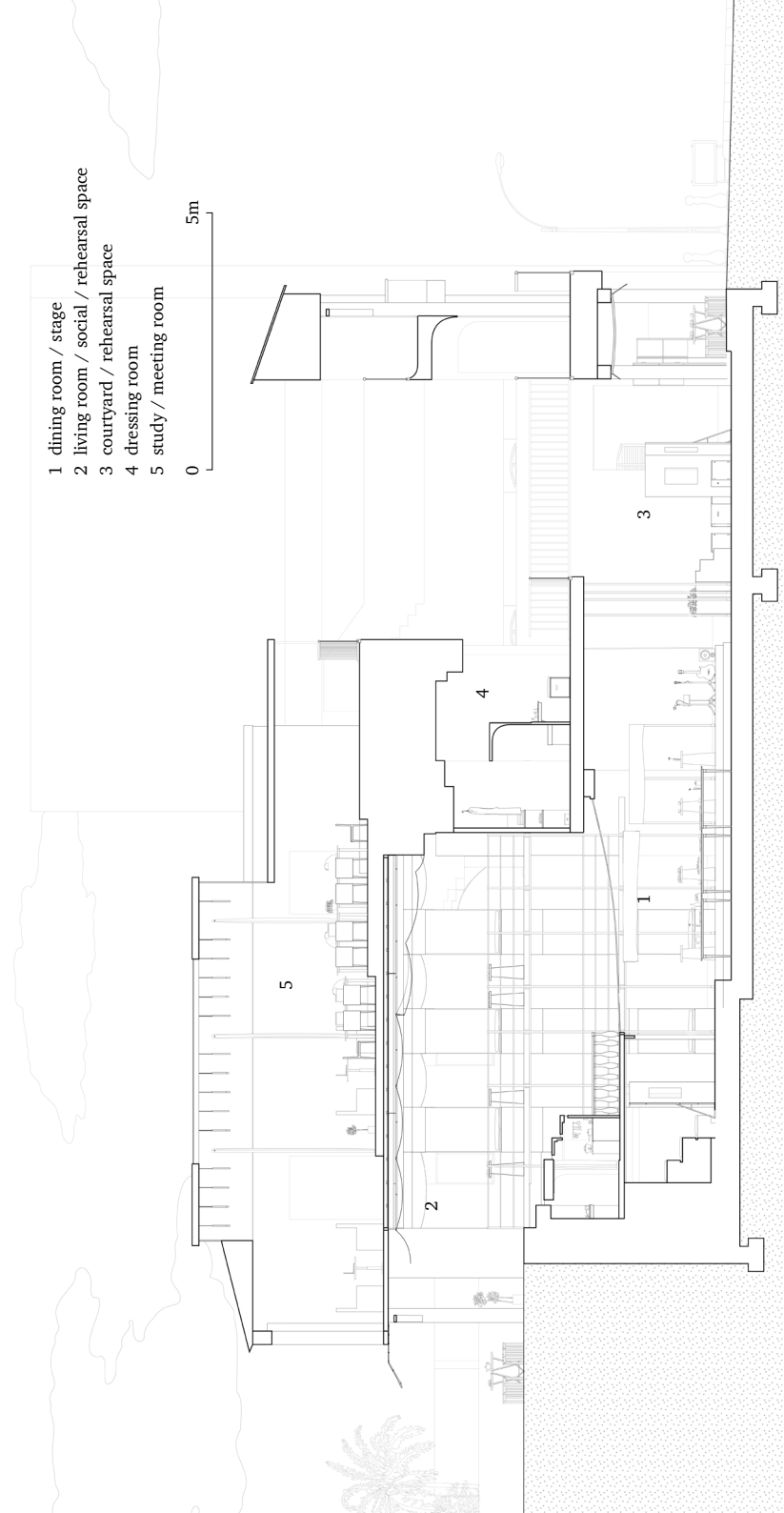


**Translating Home:  
seasonal inhabitancy**

## Contents

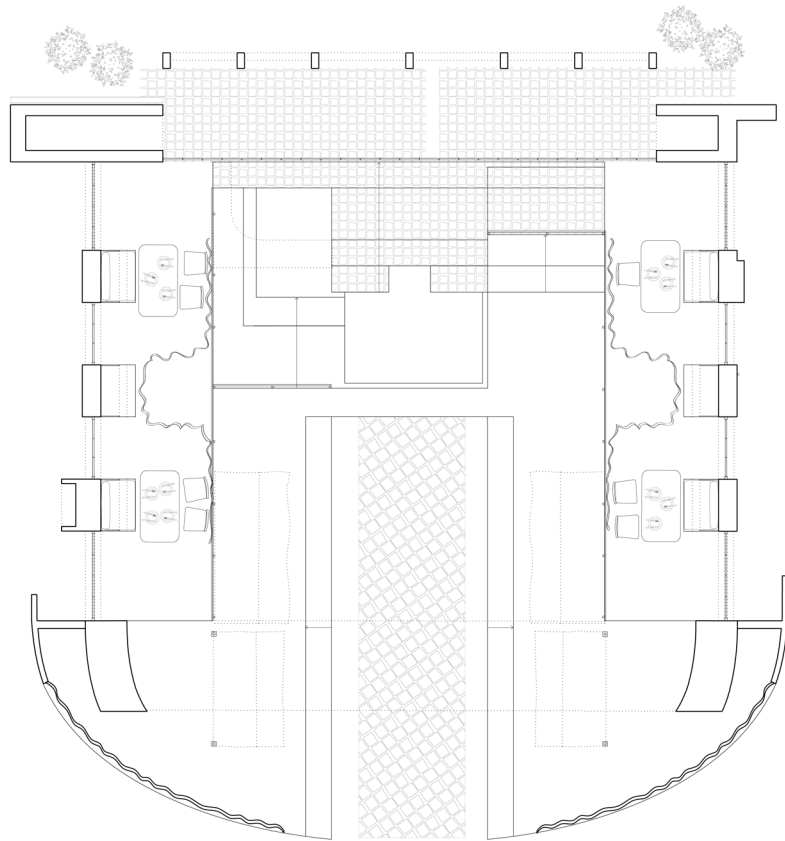
|  |    |
|--|----|
| Dining room / stage                    | 4  |
| Living room / social / rehearsal space | 10 |
| Courtyard / rehearsal space            | 16 |
| Dressing room                          | 22 |
| Study / meeting room                   | 28 |



Dining room / stage

Local inhabitants  
16 occupants

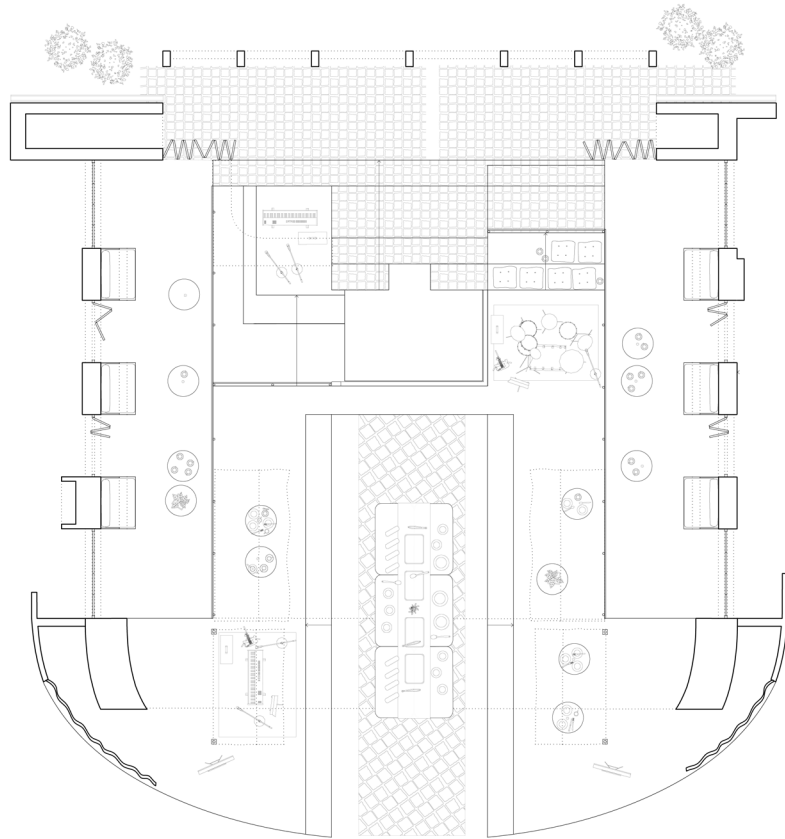
0 2m



Dining room / stage

Diaspora  
80 occupants

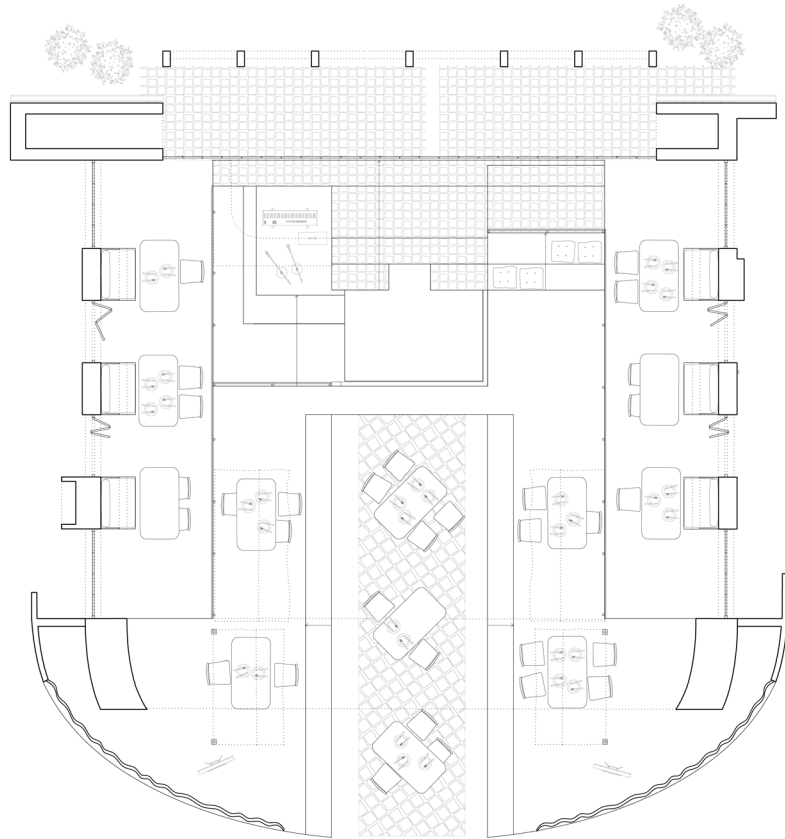
0 2m



Dining room / stage

Theatre performers  
40 occupants

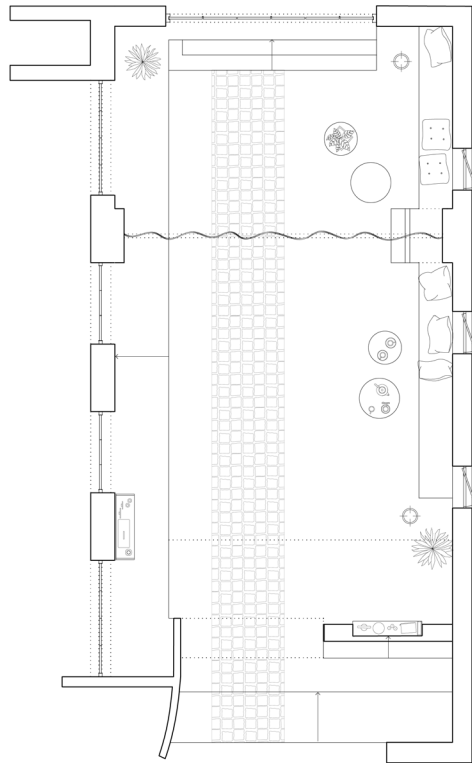
0 2m



Living room / social space / rehearsal space

Local inhabitants  
8 occupants

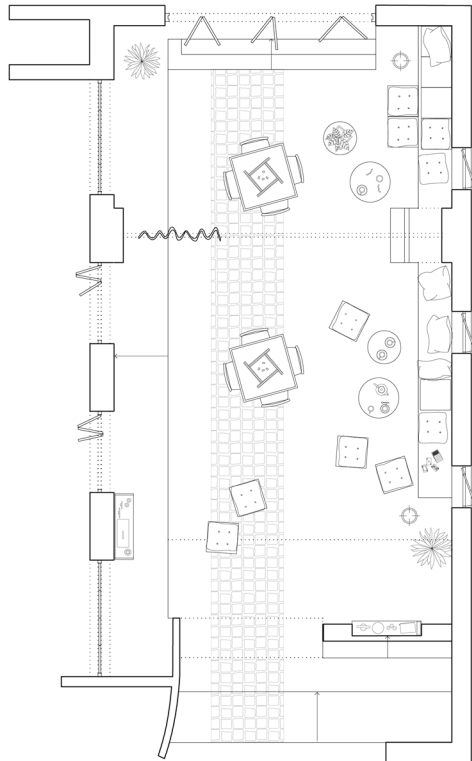
0 2m



Living room / social space / rehearsal space

Diaspora  
35 occupants

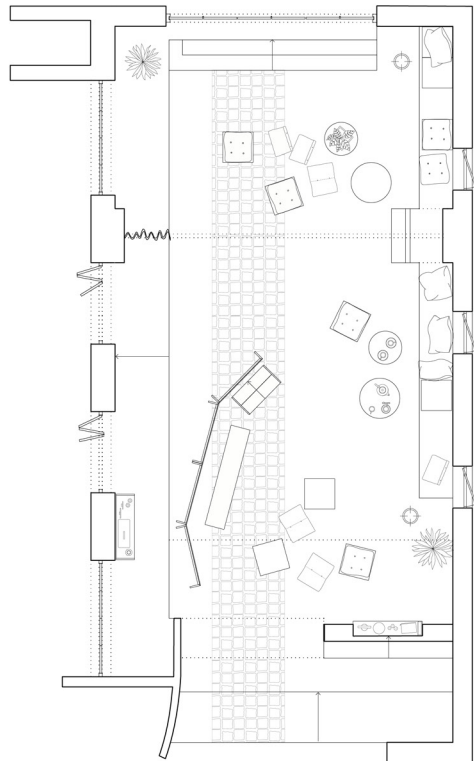
0 2m



Living room / social space / rehearsal space

Theatre performers  
16 occupants

0 2m



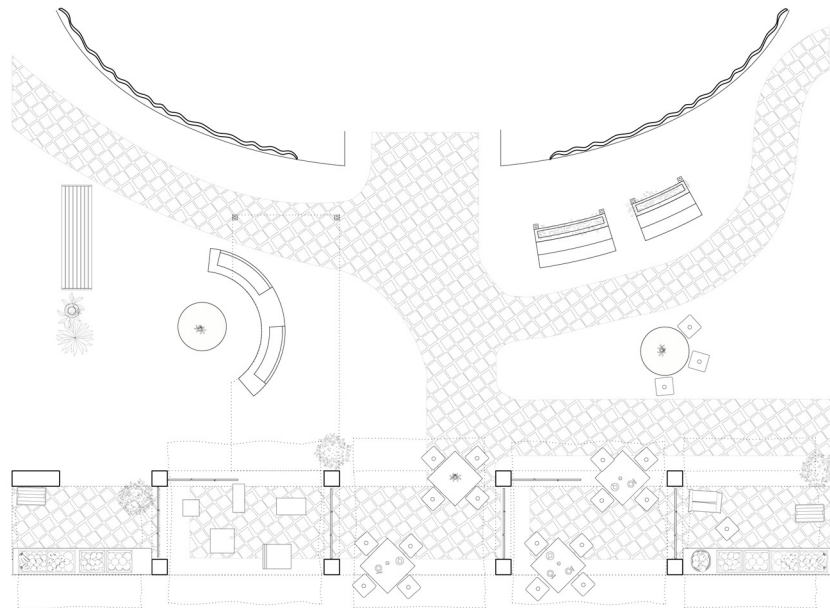


Courtyard / rehearsal space

Local inhabitants

14 occupants

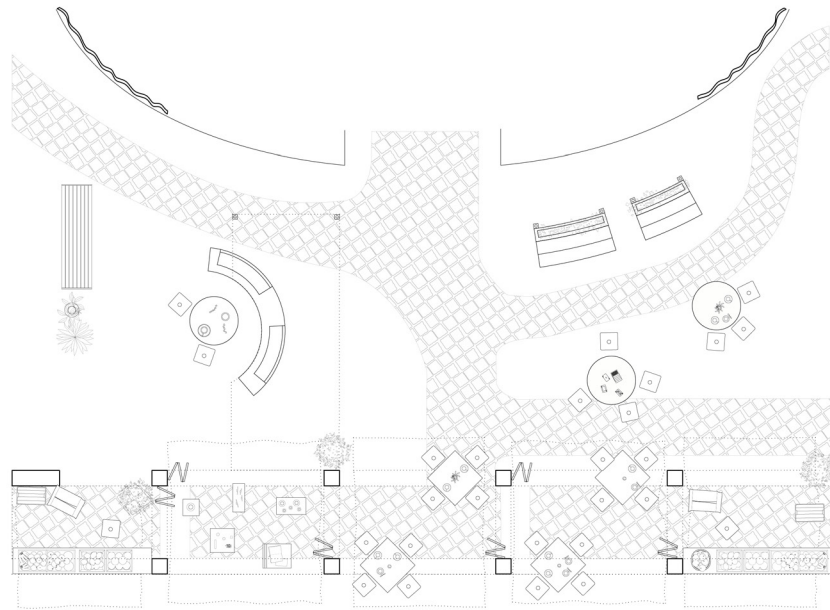
0 2m



Courtyard / rehearsal space

Diaspora  
18 occupants

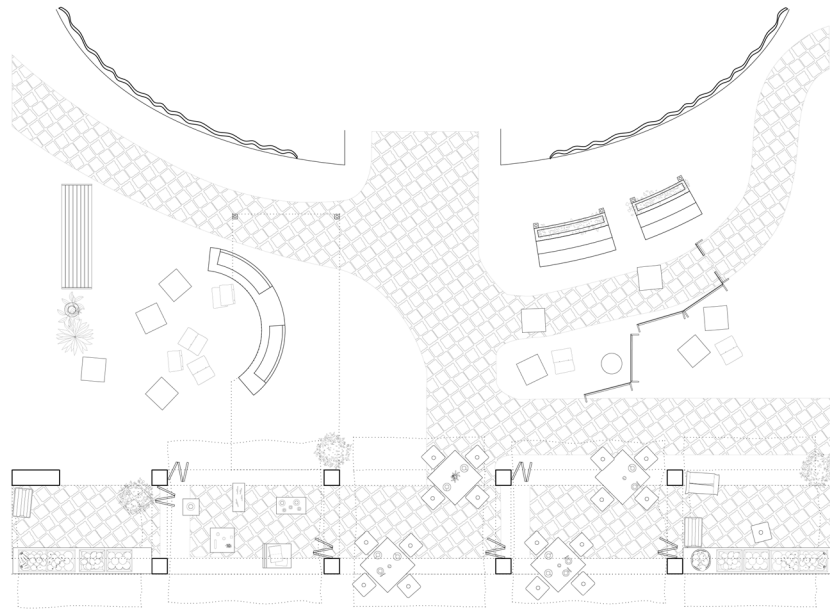
0 2m



Courtyard / rehearsal space

Theatre performers  
26 occupants

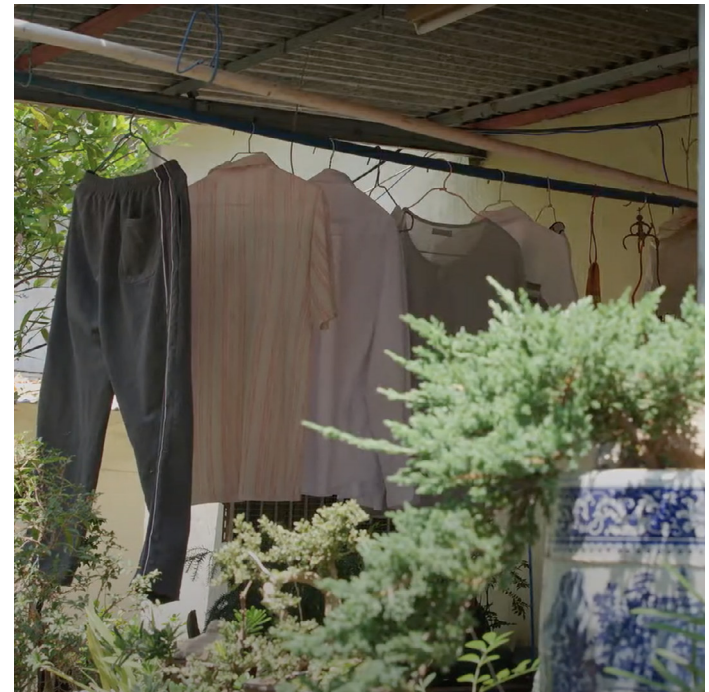
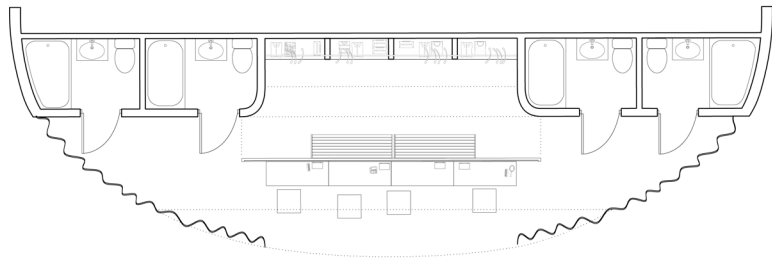
0 2m



Dressing room

Local inhabitants  
4 occupants

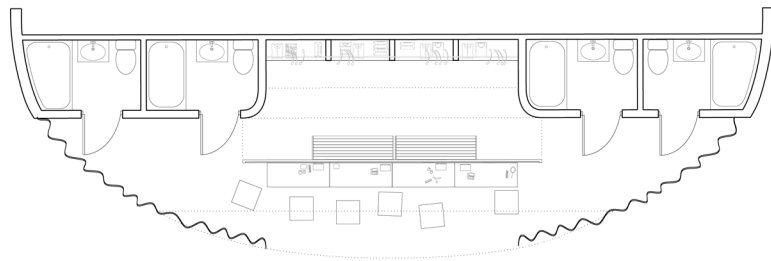
0 2m



Dressing room

Diaspora  
8 occupants

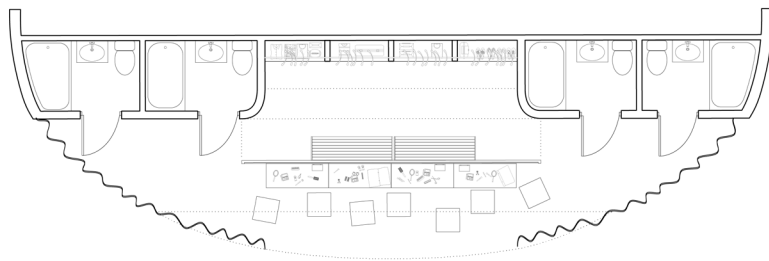
0 2m



Dressing room

Theatre performers  
16 occupants

0 2m

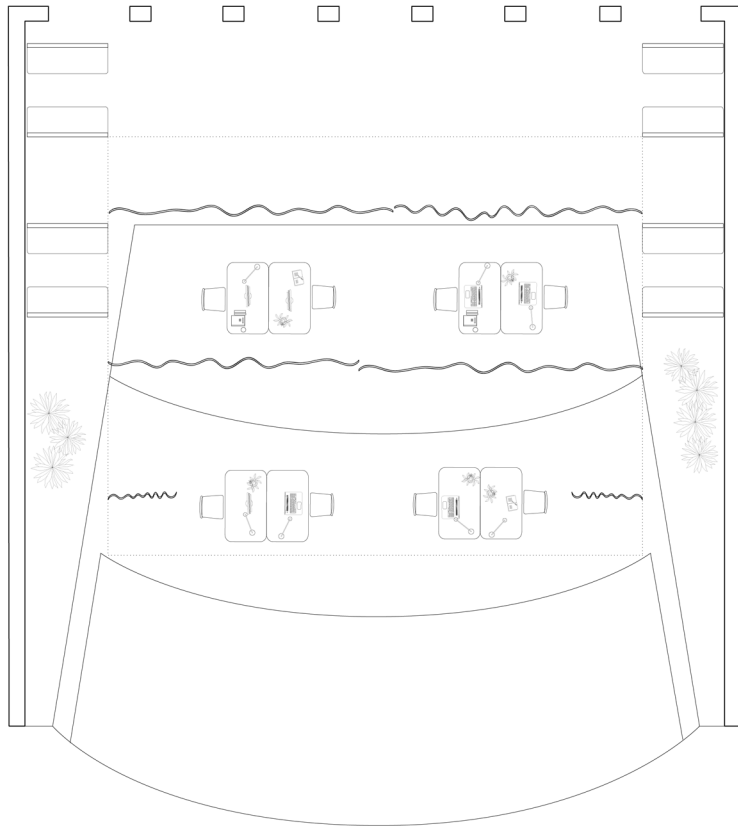


Study / meeting room

Local inhabitants

4 occupants

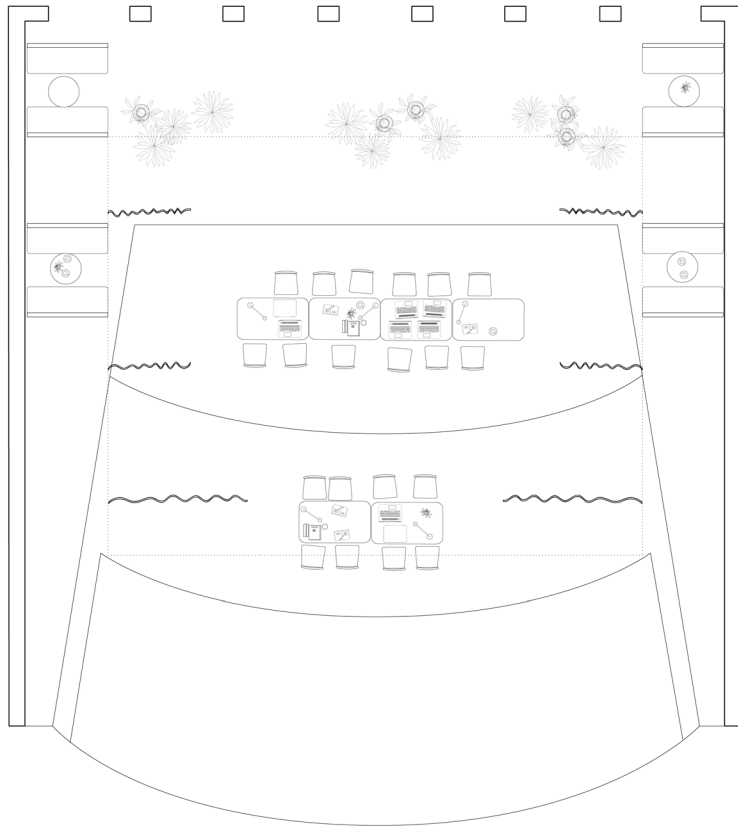
0 2m



Study / meeting room

Diaspora  
20 occupants

0 2m





Study / meeting room

Theatre performers  
10 occupants

0 2m

