

a LAB.

JIAHUI WANG /

INTERIOR DESIGN /





a LAB.

Introduce

Hello, we are 'A LAB', a temporary design studio run by students from the world-renowned Royal College of Art Interior Design MA programme in collaboration with Aberrant Architecture. We have turned this shop into an art studio for a week and we will explore how communal spaces in shopping centres could be transformed through art and creative thinking.

Using the Beacon centre as our case study we will carry out a series of design-focused workshops and turn our ideas into collages, sketches, and models. These ideas will be on display in the shop window for you to explore. At the end of the week, we will open our doors to you,

Participants:
Aberrant Architecture:
Kevin Haley
RCA Interior Design MA:
Yiqing Miao
Yingxi Qian
Jiahui Wang
Hang Zhang

PEOPLE OF THE A LAB



Yiqing Miao



Hang Zhang



Yingxi Qian



Jiahui Wang

PHOTOS OF THE A LAB

-



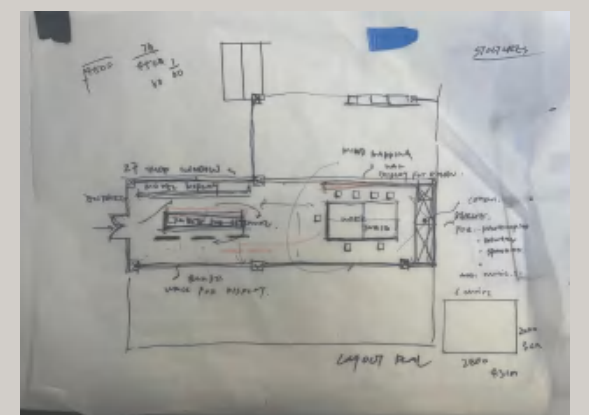
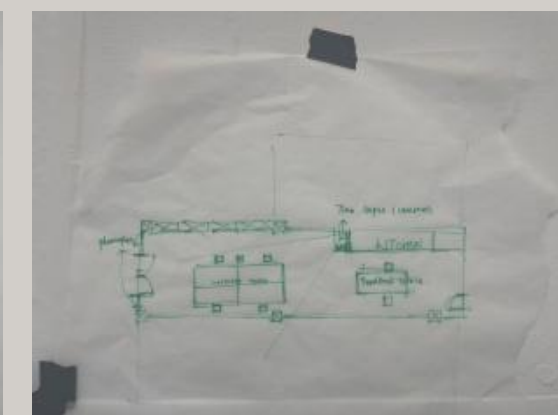
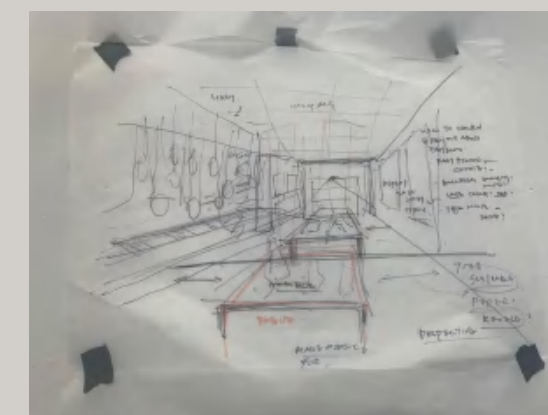
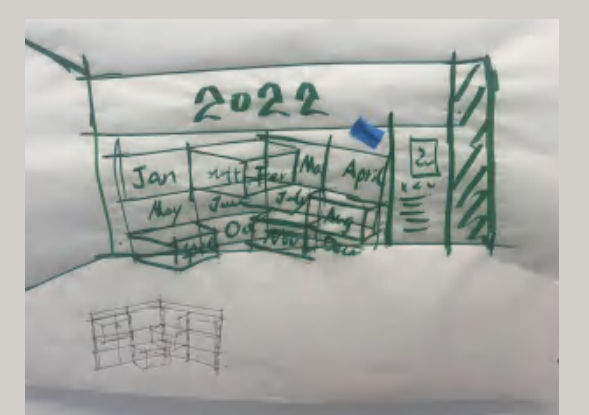
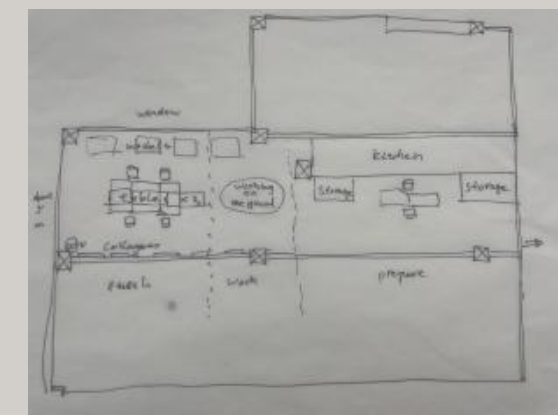
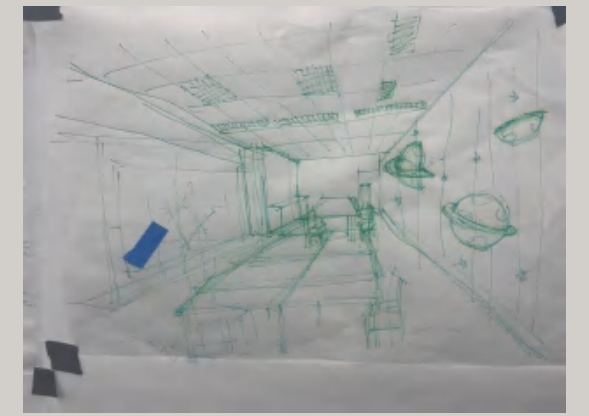
a LAB.
JOURNAL

BEFORE

®

SKETCH OF PLAN

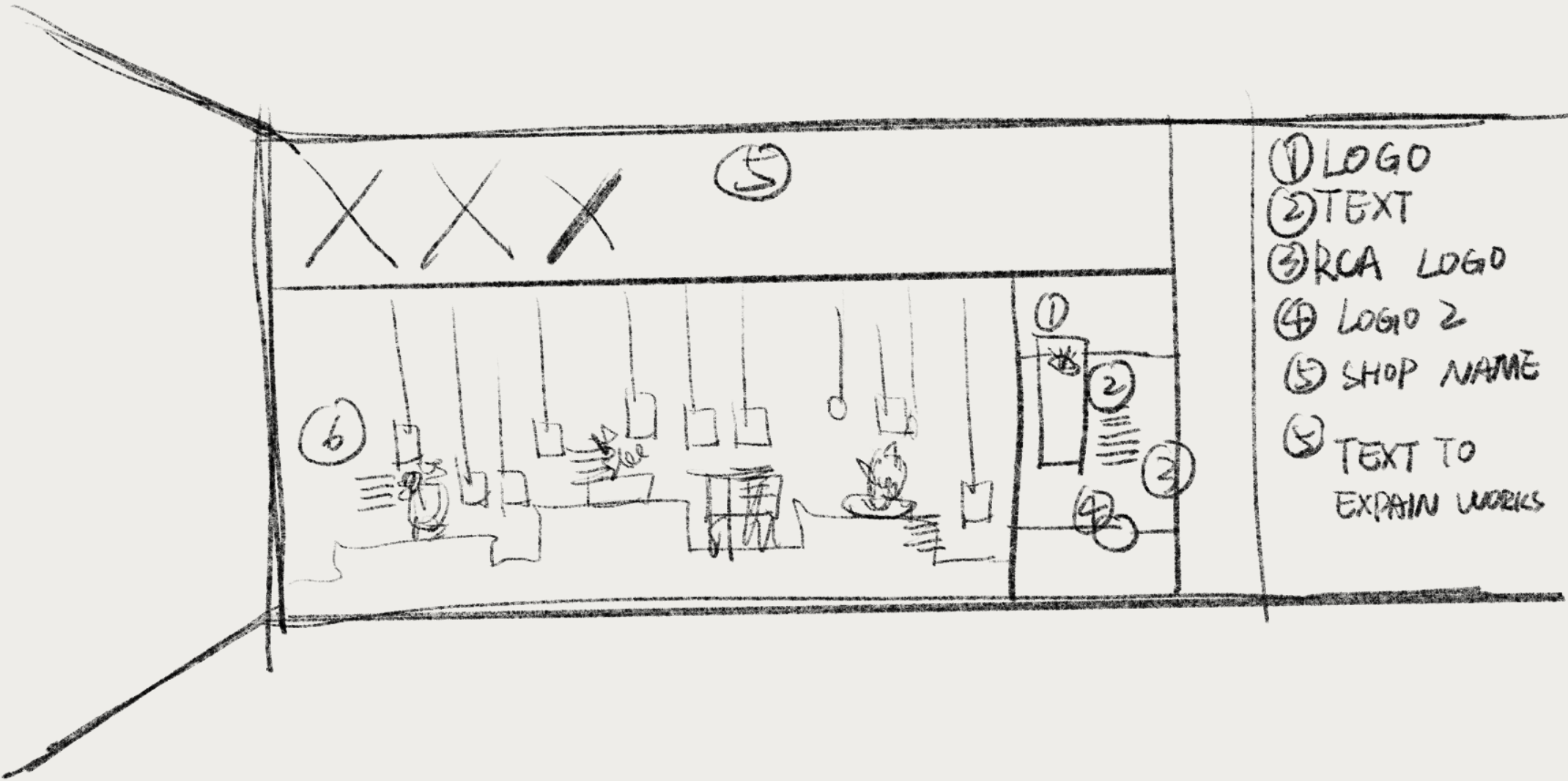
Led by Kevin, we each had to draw three plans at the same time, which had to include plan/elevation/and perspective views respectively. Afterwards a vote was taken to choose the scheme that everyone liked best.



SECTION

-

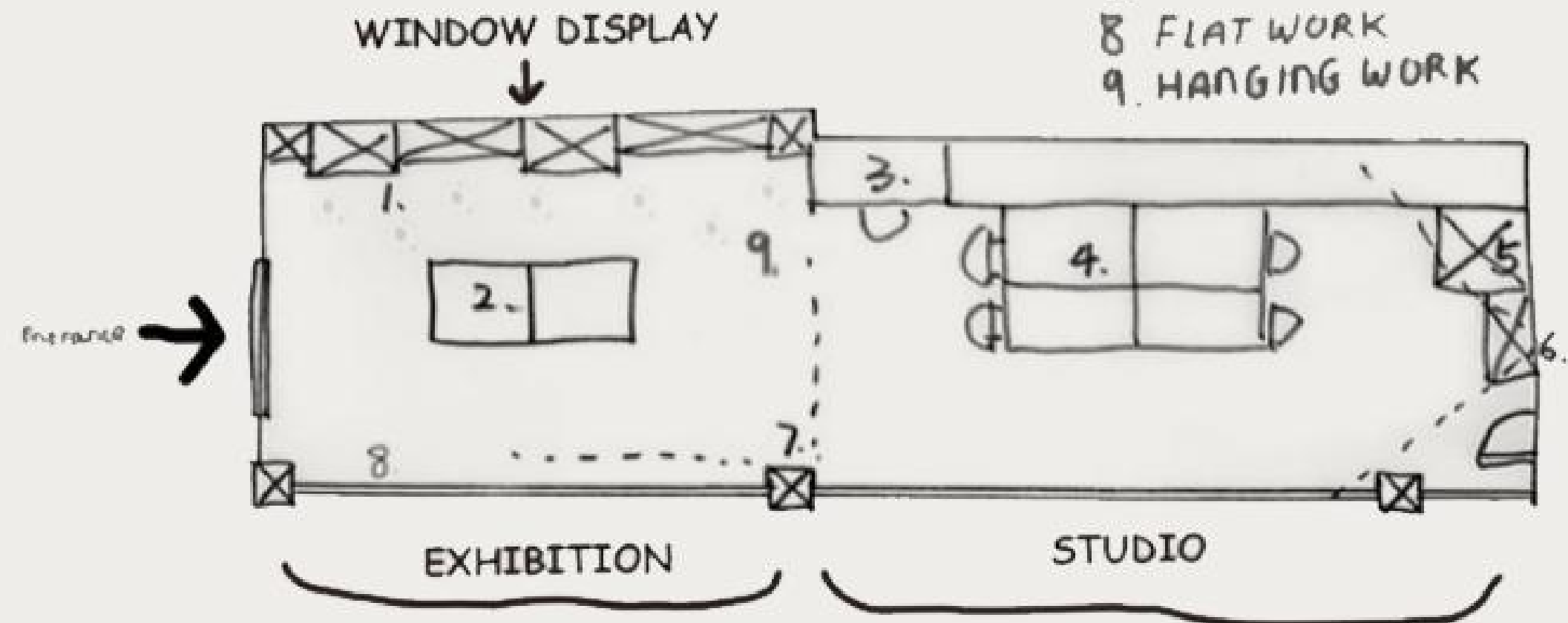
the layout was divided into two parts, one for the window display to the audience and the other as a working area for our workshops.



PLAN

-

1. MODELS
2. TABLES
3. KEVIN
4. WORKING TABLES
5. PRINTER
6. CAM
7. CAM
8. FLAT WORK
9. HANGING WORK



We put the studio workspace and exhibition area in front of , and provide other people to come to the workshop. Back of studio it is our own work area, we will carry out our project and get to know the local residents at the same time

_____LAB.

No Light Close Lab/Studio

a LAB.

Gravitation LAB.

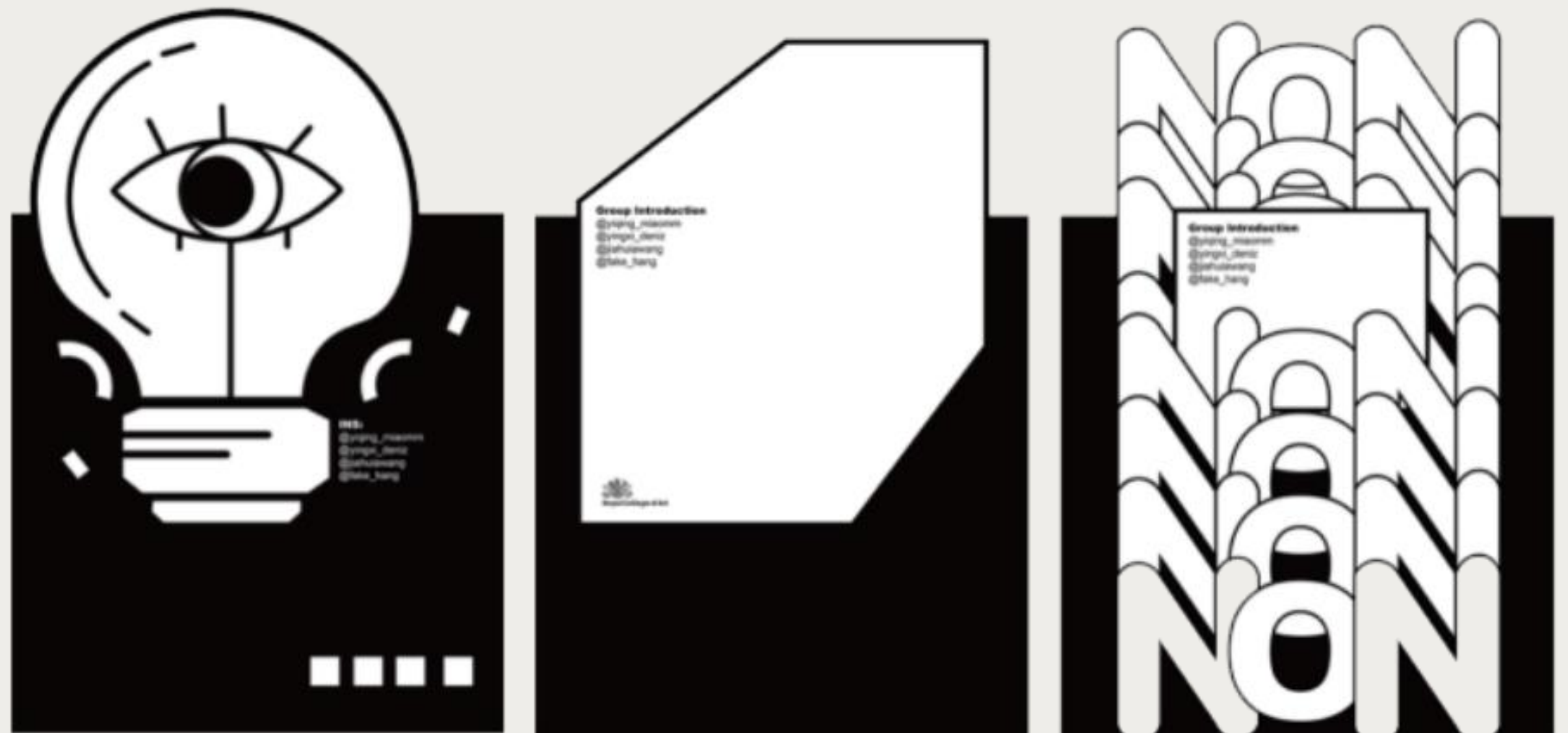
Talent LAB.

a LAB. NAME-

PANEL DESIGN

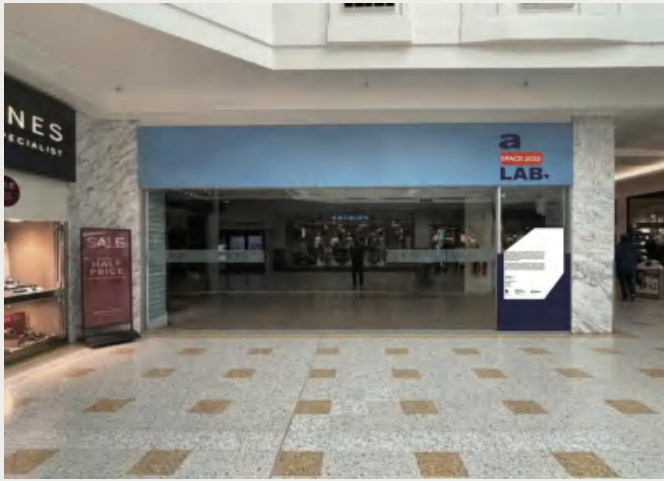
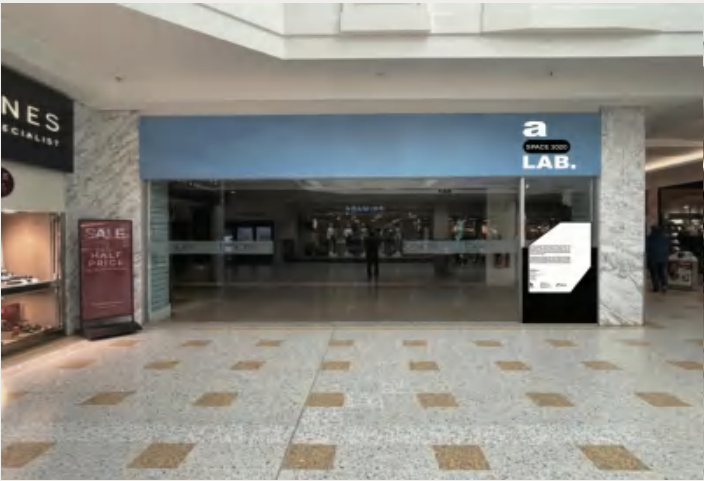
-

In the design of the exhibition board, the key words chosen were exploration, unknown, and experimentation. The exhibition board needs to give information to the viewer. To tell them clearly "what this is". Therefore, a clear visual impact is the best answer for the viewer.



ARTWORK FINAL

-



Hello, we are 'A LAB', a temporary design studio run by students from the world-renowned Royal College of Art Interior Design MA programme in collaboration with Aberrant Architecture. We have turned this shop into an art studio for a week and we will explore how communal spaces in shopping centres could be transformed through art and creative thinking.

Using the Beacon centre as our case study we will carry out a series of design-focused workshops and turn our ideas into collages, sketches, and models. These ideas will be on display in the shop window for you to explore. At the end of the week, we will open our doors to you, host an exhibition of our work and invite your feedback.

Participants:
Aberrant Architecture:
Kevin Haley

RCA Interior Design MA:
Yiqing Miao
Yingxi Qian
Jiahui Wang
Hang Zhang

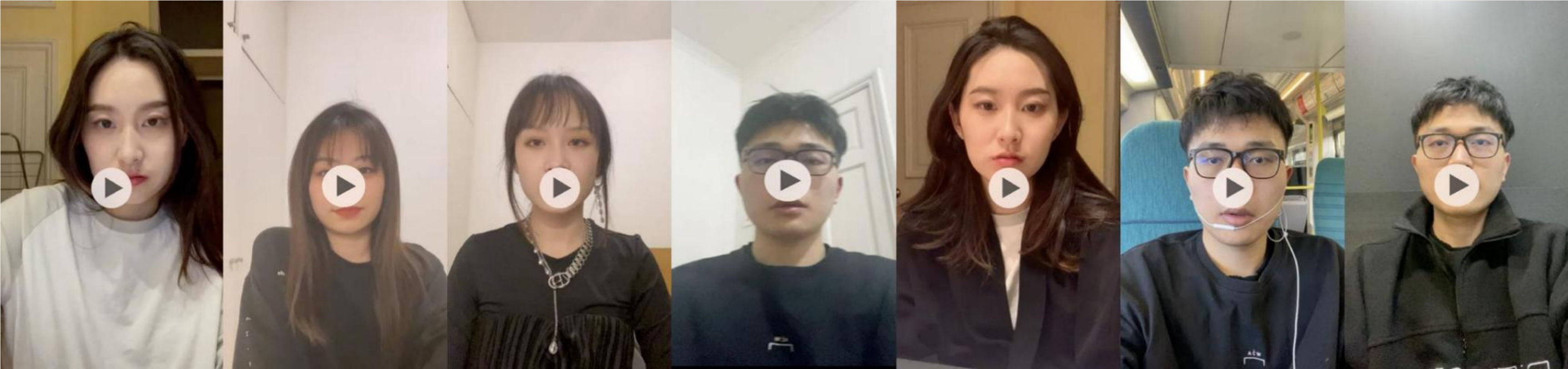


Aberrant
Architecture
@aberrant
www.aberrantarchitecture.com



Powered by GATF

INTERVIEWS



WORKSHOP SHEET



Introduction

14:00 - 14:10
- Introduction

Step 1

14:10 - 14:30
- Build First Level (Red) - Yiqing, Hang
- Cutting Top Platform - Yingxi, Jiahui

Step 2

14:30 - 15:00
- Build Second Level (Red) - Everyone

Step 3-4

15:00 - 15:30
- Placing the Platform - Everyone
- Placing Model C and D - Jiahui, Hang

Step 5

15:30 - 16:00
- Build Second Level (Black) - Everyone

Step 6

16:00 - 16:30
- Build third Level (Black) - Everyone

Step 7

16:30 - 17:00
- Build the fourth Level - Everyone

Step 8

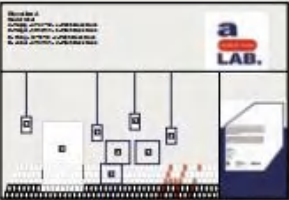
17:00 - 17:15
- Build Fifth Level - Yiqing
- Cutting Top Platform - Hang, Jiahui, Yingxi

Step 9

17:15 - 17:30
Placing the Platform - Everyone

Step 10-11

1. Placing Model A and B - Yingxi, Yiqing
2. Hanging Pitch Duck Booklet - Jiahui, Hang



Thursday
2022 - 02.01
14:00 - 18:00
Nonterior



COLLAGE WORKSHOP

Step 1

11:00 - 11:15

Find key words from your concept statement.

Step 2

11:15 - 12:00

Use designer website to find project images connect to them.

Step 3

12:00 - 12:30

Use photoshop to cut the parts you need from these images.

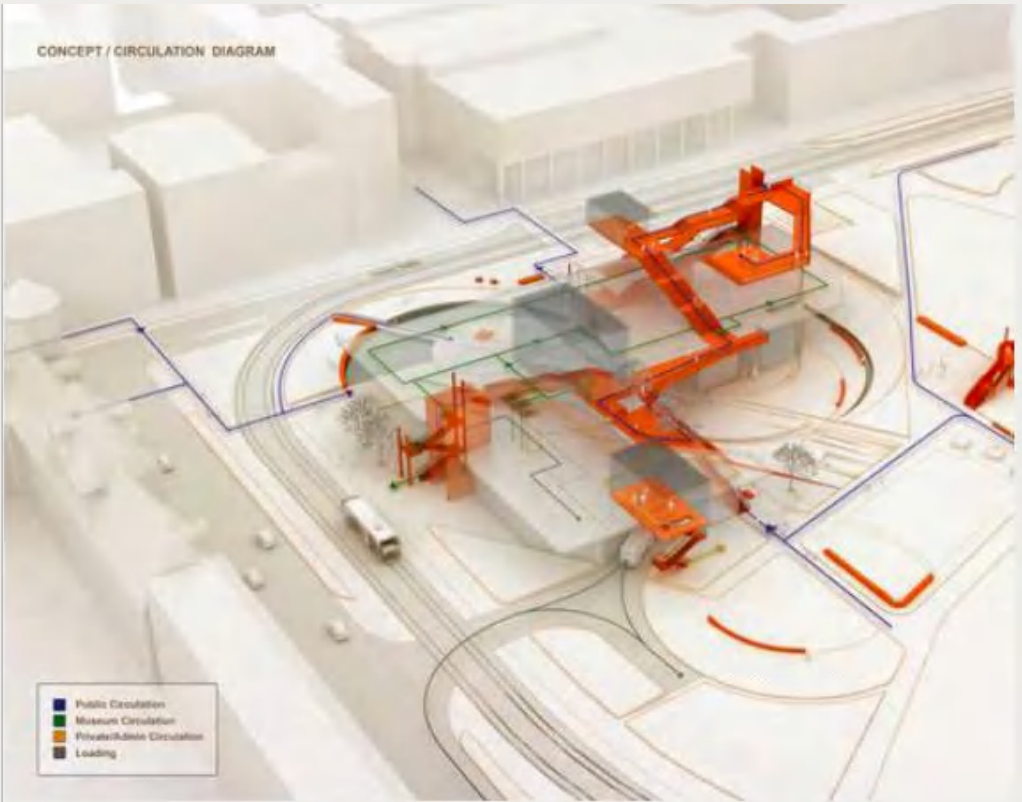
Step 4

12:30 - 13:00

Decide the size of each part and think about how they connect. Collaging them!

Tips

Designer website: pinterest, designboom, archdaily, dezeen, vice, pexels...



MODEL WORKSHOP

Step 1

14:00 - 14:30

Find your site, take photos and measurement.

Step 2

14:30 - 15:00

Prepare the figure you need think about what materials you will use and why. How you can use material to describe the light, sound, smell and mood.

Step 3

15:00 - 16:30

Focus on your own 1:50 site model.

Step 4

16:30 - 17:00

Make (a) small flag(s) to point out where is your site on the map.

Tips

Try to use your model to describe the space as clear as possible. What materials are using there? Where is the route? And make sure your model is clean with quality.

WORKSHOP SHEET

Program^{3rd}
Workshop

Yiqing Miao | Hang Zhang | Yingxi Qian | Jiahui Wang

Thursday
2022 - 02.03
11:00 - 13:00
Nonterior

Workshop 04

Step1
11:00 - 11:30
- Identify your building typologies
(Refer: https://en.wikipedia.org/wiki/List_of_building_types)
- List the space you need
(eg: tea room, display area, game hall, dance hall...)

Step2
11:30 - 12:00
- Search for plans online by building typologies you need.

Step3
12:00 - 13:00
- print plans
- Cut into different pieces
- Reassemble the fragments into a new plan collage plan x 3

Google

de zeen

A LAB

Thursday
2022 - 02.03
14:00 - 17:00
Nonterior

Scale^{3rd}
Workshop

Yiqing Miao | Hang Zhang | Yingxi Qian | Jiahui Wang

Workshop 04

Step1
14:00 - 14:30
- Find three sizes of planes online
(eg: 'S' 15m² / 'M' 100m² / 'L' 500m²)
- Build simple exterior walls for both sides of the plan

Step2
14:30 - 15:20
- Layout in an empty small space(S)
- Fold 'blocks' to differentiate spaces with colors

Step3
15:20 - 16:10
- Layout in an empty medium space(M)
- Fold 'blocks' to differentiate spaces with colors

Step4
16:10 - 17:00
- Layout in an empty large space(L)
- Fold 'blocks' to differentiate spaces with colors

Google

de zeen

Yiqing Miao
Hang Zhang
Yingxi Qian
Jiahui Wang

a LAB.
Nonterior

2022
02.04
Workshop 06

Material

&

Form

Step1 11:00-12:00
- Per person to go anywhere you want to be interested in something
Before buying, think about a user experience you want, whether the overall model is soft or hard, etc.

Step2 13:00-15:30
- Make Models
1. Using the plan from yesterday write down x3 or more problems your project will have to tackle.
2. Make x3 or more models to solve these problems.
3. Use form and material choices to tackle the problems

Step3 15:30-16:00
- Take Photos
Take 10 photos of each model at an angle to draw the line of people routes

Royal College of Art
Postgraduate Art & Design

a LAB.
JOURNAL

DAY 1

Setup studio、 Setup window display

Window Display –

Leader: Yiqing Miao

Set up a studio to show our model and prepare for more understanding of residence

2022.02.01



Introduction

14:00 - 14:10

- Introduction

Step 1

14:10 - 14:30

- Build First Level (Red) - Yiqing, Hang

- Cutting Top Platform - Yingxi, Jiahui

Step 2

14:30 - 15:00

- Build Second Level (Red) - Everyone

Step 3-4

15:00 - 15:30

- Placing the Platform - Everyone

- Placing Model C and D - Jiahui, Hang

Step 5

15:30 - 16:00

- Build Second Level (Black) - Everyone

Step 6

16:00 - 16:30

- Build third Level (Black) - Everyone

Step 7

16:30 - 17:00

- Build the fourth Level - Everyone

Step 8

17:00 - 17:15

- Build Fifth Level - Yiqing

- Cutting Top Platform - Hang, Jiahui, Yingxi

Step 9

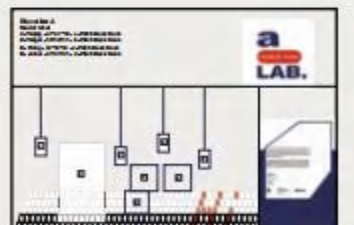
17:15 - 17:30

- Placing the Platform - Everyone

Step 10-11

1. Placing Model A and B - Yingxi, Yiqing

2. Hanging Pitch Duck Booklet - Jiahui, Hang



Thursday

2022 - 02.01

14:00 - 18:00

Nonterior

Timetable – Window Display

9:00 AM

Yiqing Miao, Hang

Tasks:

Transferring materials and models to the van

Jiahui Wang, Yingxi Qian,

Tasks:

Go to Eastbourne and set up studio in Beacon3

2:30 PM

The van, which was expected to arrive in Eastbourne at 12:00, was delayed by an hour before arriving at the Beacon Center.

We needed to go to Bay 4 in the mall to find a driver to pick up the goods. But it took half an hour but we couldn't find the driver. The driver got very angry and threatened us saying, "I'll leave if you don't come!"

Finally, with the help of the mall staff, we managed to find Bay 4 and get the important models and materials.

3:00 PM

Ready to start building the windows.

Before starting, I gave a short introduction. After that we started preparing to unpack all the packing boxes and put them on the table.

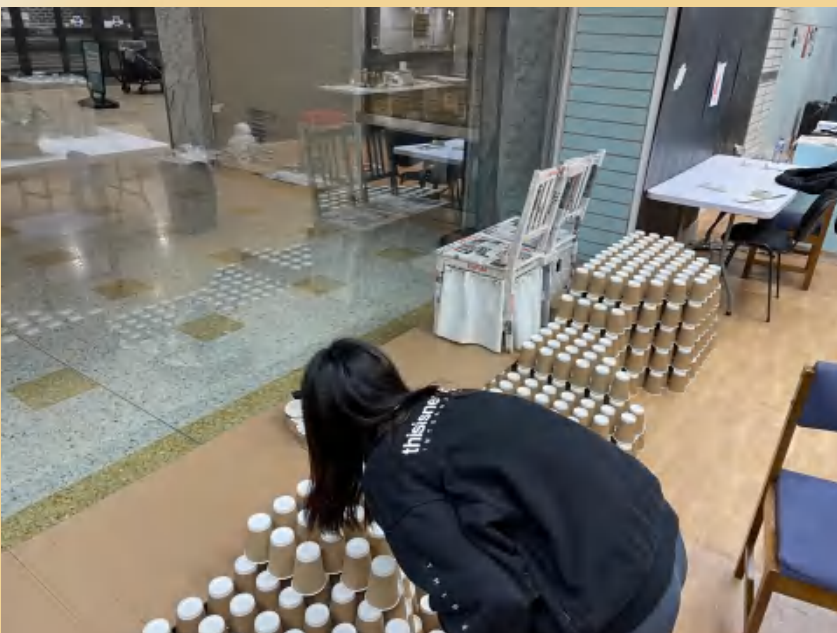
3:30 PM

Start to set up the exhibition

PROCESS OF DISPLAY

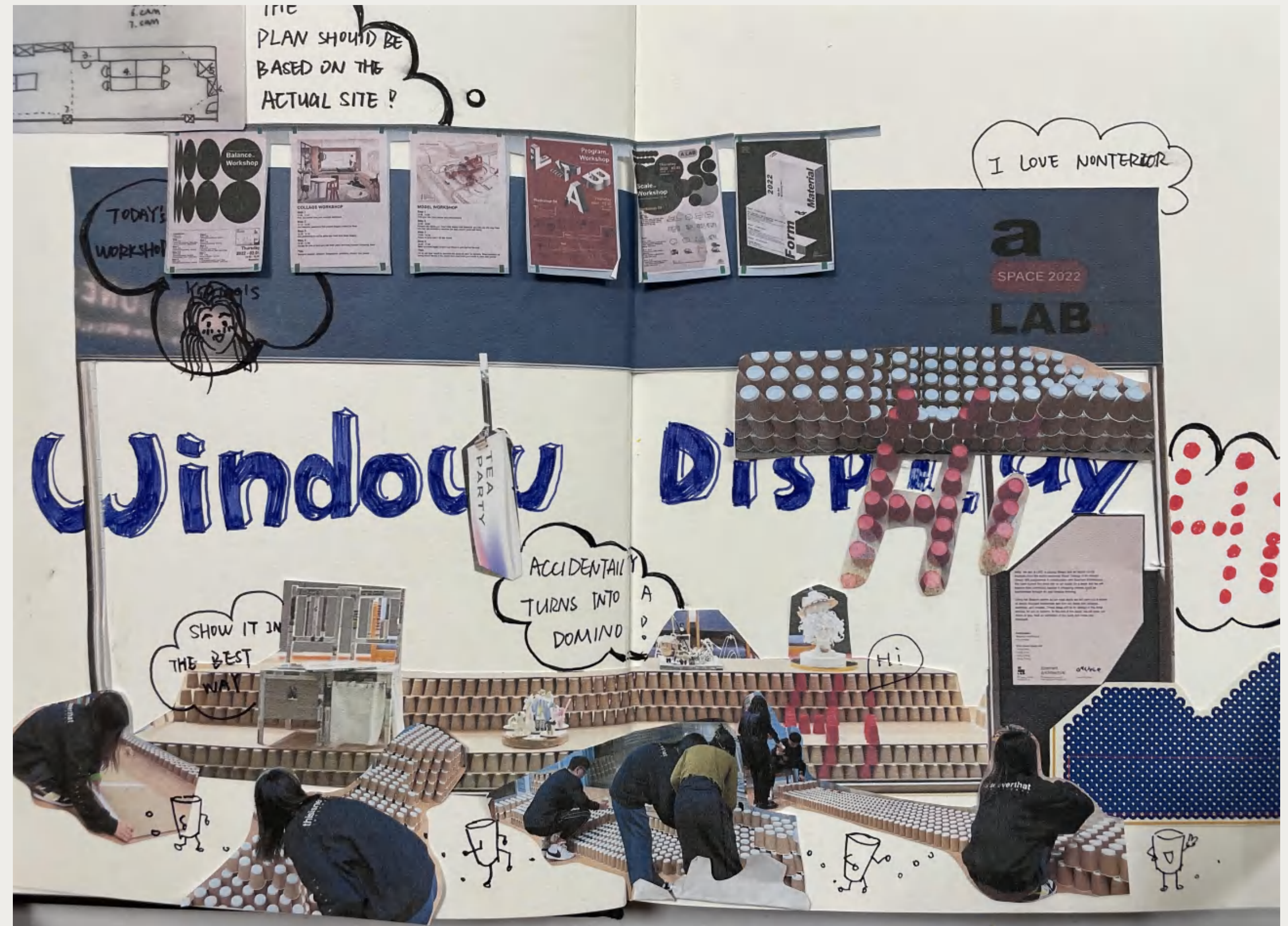
-

After many adjustments, we finally solved the problem and managed to make “Hi”. Finally, we hang the pitch deck booklet on the ceiling.



EXPERIENCE OF DISPLAY

-



Most of the time, it will not go according to the plan, but with the group of students, it will be done

12:00AM - Window Display End



DAY 2

Collage workshop、 Site workshop、 Interview、 Display

Collage&Site

Leader: Hang Zhang

Collage workshop、Site workshop、Interview、Display

2022.02.02



COLLAGE WORKSHOP

Step 1

11:00 - 11:15

Find key words from your concept statement.

Step 2

11:15 - 12:00

Use designer website to find project images connect to them.

Step 3

12:00 - 12:30

Use photoshop to cut the parts you need from these images.

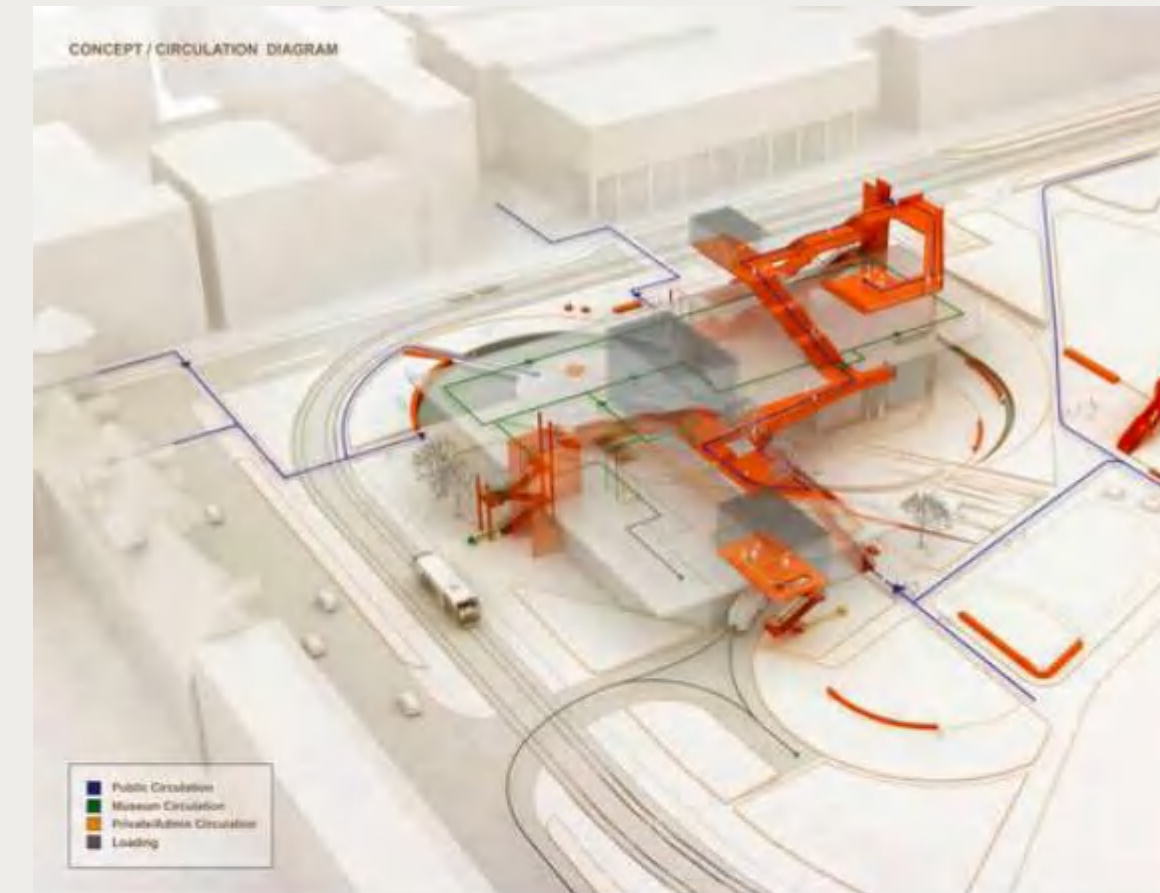
Step 4

12:30 - 13:00

Decide the size of each part and think about how they connect. Collaging them!

Tips

Designer website: pinterest, designboom, archdaily, dezeen, vice, pexels...



MODEL WORKSHOP

Step 1

14:00 - 14:30

Find your site, take photos and measurement.

Step 2

14:30 - 15:00

Prepare the figure you need think about what materials you will use and why. How you can use material to describe the light, sound, smell and mood.

Step 3

15:00 - 16:30

Focus on your own 1:50 site model.

Step 4

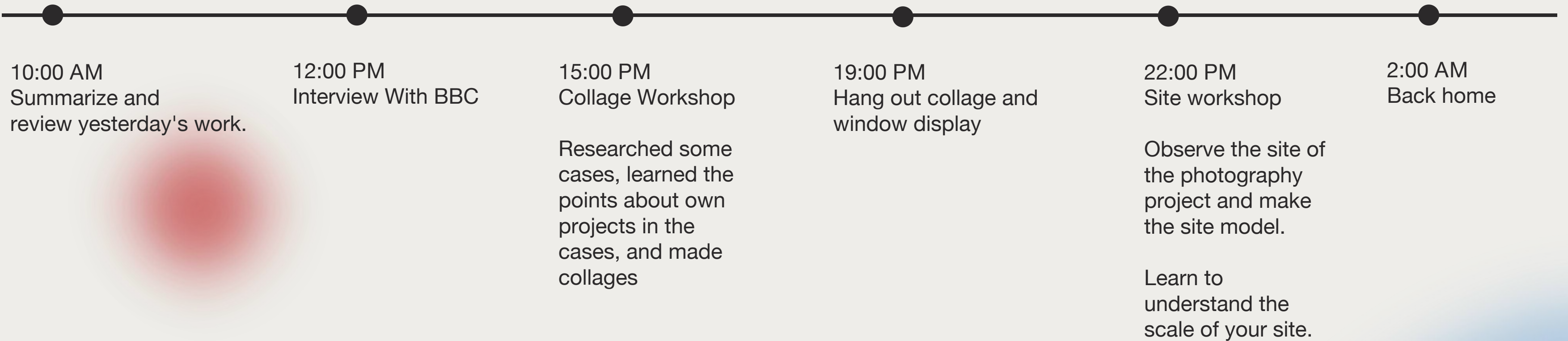
16:30 - 17:00

Make (a) small flag(s) to point out where is your site on the map.

Tips

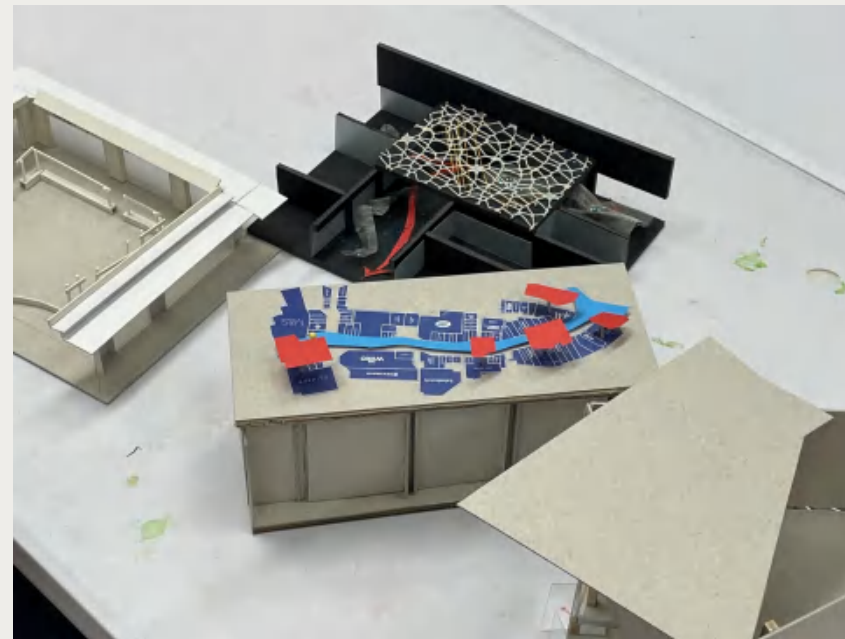
Try to use your model to describe the space as clear as possible. What materials are using there? Where is the route? And make sure your model is clean with quality.

Timetable – Day 2



PROCESS

We further developed our project by studying the case and the site. In my project, the site is square and surrounded by shops. When considering my project, we should also consider the shops around.



COLLAGE WORKSHOP

I've learned from case studies that there are communities that live together, that bringing older people and younger people together, reduces age segregation, promotes social development, has a lot of benefits, and also has a place of mutual education, where older people and younger people can learn from each other.



SITE WORKSHOP

-

We further developed our project by studying the case and the site. In my project, the site is square and surrounded by shops. When considering my project, we should also consider the shops around.



SITE WORKSHOP

Our projects are in every corner of the shopping mall. After a week's study, WE learn more about interior design in public space



INTERVIEW WITH BBC

-

Hang, as our representative, spoke with BBC to promote our activities



2:00AM - Window Display End



DAY 3

Plan workshop、Scale workshop

Scale&Plan

Leader: Yingxi Qian

Plan workshop、Scale workshop、Display

2022.02.03

Program^{3rd} Workshop
Yiqing Miao | Hang Zhang | Yingxi Qian | Jiahui Wang

Workshop 04
Thursday 2022 - 02.03
11:00 - 13:00
Nonterior

Step1
11:00 - 11:30
- Identify your building typologies (Refer: https://en.wikipedia.org/wiki/List_of_building_types)
- List the space you need (eg: tea room, display area, game hall, dance hall...)

Step2
11:30 - 12:00
- Search for plans online by building typologies you need.

Step3
12:00 - 13:00
- print plans
- Cut into different pieces
- Reassemble the fragments into a new plan collage plan « 3



A LAB

Thursday 2022 - 02.03
14:00 - 17:00
Nonterior

Scale^{3rd} Workshop
Yiqing Miao | Hang Zhang | Yingxi Qian | Jiahui Wang

Workshop 04

Step1
14:00 - 14:30
- Find three sizes of planes online (eg: 'S'15m²/'M'100m²/'L'500m²)
- Build simple exterior walls for both sides of the plan

Step2
14:30 - 15:20
- Layout in a empty small space(S)
- Fold 'blocks' to differentiate spaces with colors

15:20 - 16:10
- Layout in a empty medium space(M)
- Fold 'blocks' to differentiate spaces with colors

16:10 - 17:00
- Layout in a empty large space(L)
- Fold 'blocks' to differentiate spaces with colors

Tips:
- 'Blocks': Boxes
- Fold out the box with cardstock through the division of the area

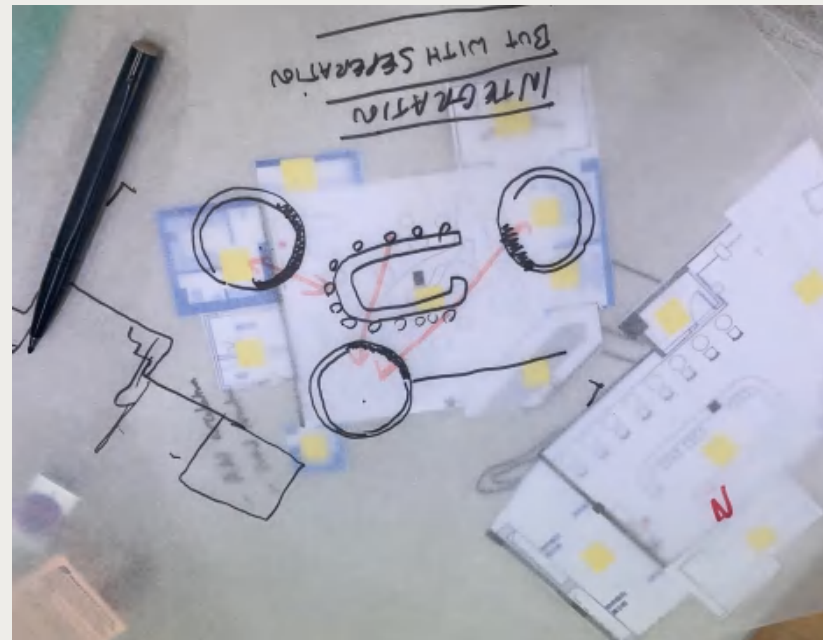


Timetable – Day 3

10:00 AM Summarize and review yesterday's work.	11:00 AM Plan workshop Define the type, function of the project. Find the floor plan of the type to which it belongs. Learn the functions and layout on the floor plan. Finally output the plan diagram of the project in a collage.	14:00-17:00 PM Ella leads the Y1 students in a workshop session on the other side of the studio. They collected items from the mall. Redefine the concept and add a lot of interesting models to the studio.	16:00 - 18:00PM Even though there was plenty of time today, there was still some delay and it was already 4:00 pm when we started the new workshop. Once we have determined the properties of the project, and have identified all the features. What needs to be considered now is the weight of each function in the space. Which functions are the most important and which are the second most important. We need to show all the information through a 3D model.	12:00 AM Back home
--	---	---	---	-----------------------

PROCESS

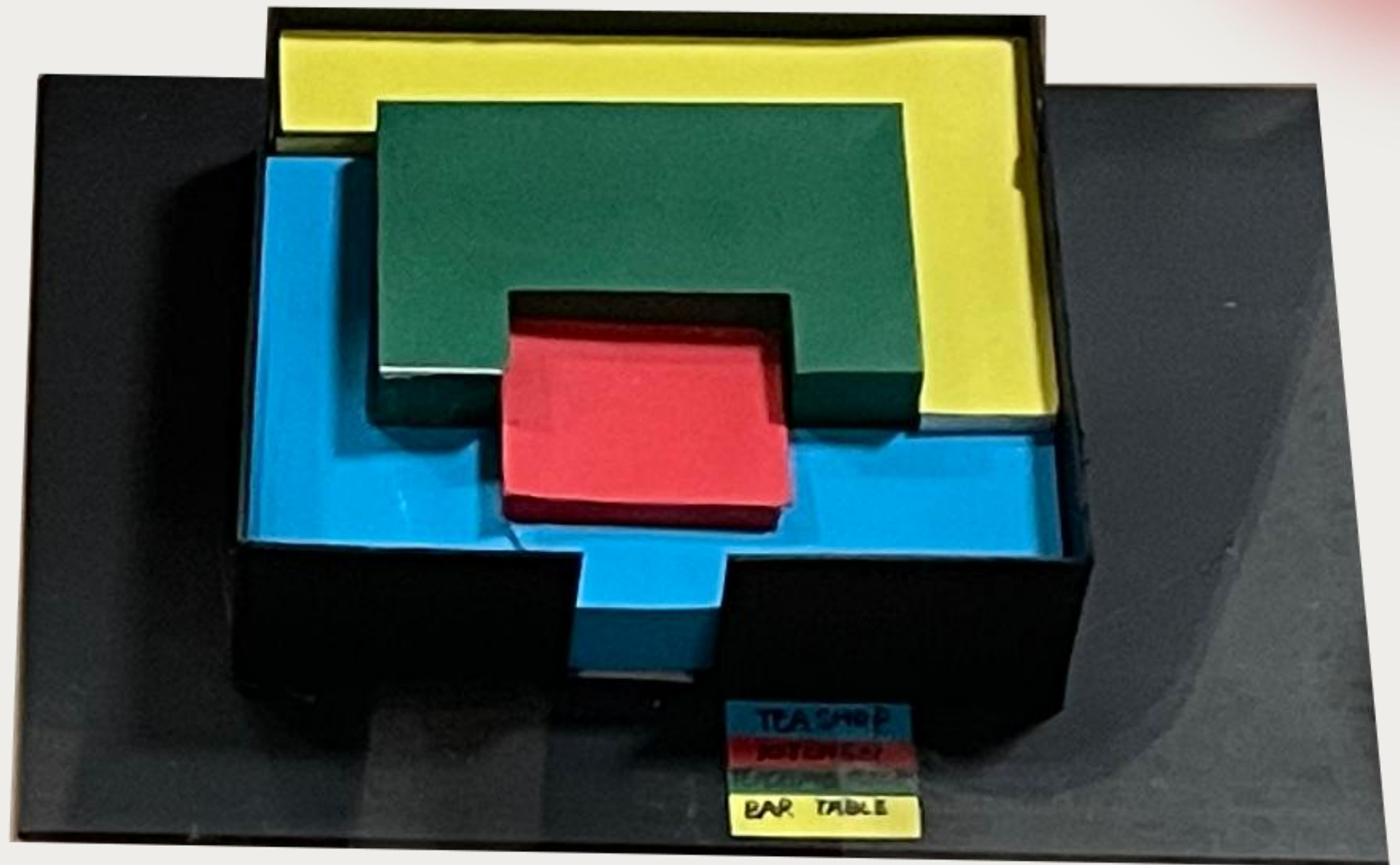
Through the study of plan and scale, we understand the function and layout on the plan. Finally output the planned items in the collage.



SCALE WORKSHOP

-

In the study of Scale, my project is divided into four parts, namely, Social Space, Kitchen, teaching Room and Tea Shop. And the model corresponds to the proportion of functions in space.



YEAR 1 JOIN THE WORKSHOP



Ella leads the Y1 students in a workshop session on the other side of the studio. They collected items from the mall. Redefine the concept and add a lot of interesting models to the studio.

YEAR 1 STUDENTS WORK DIASPLAY

-



12:00PM - Window Display End



DAY 4

Model workshop、Setup Exhibition、Public opening

Form&Material –

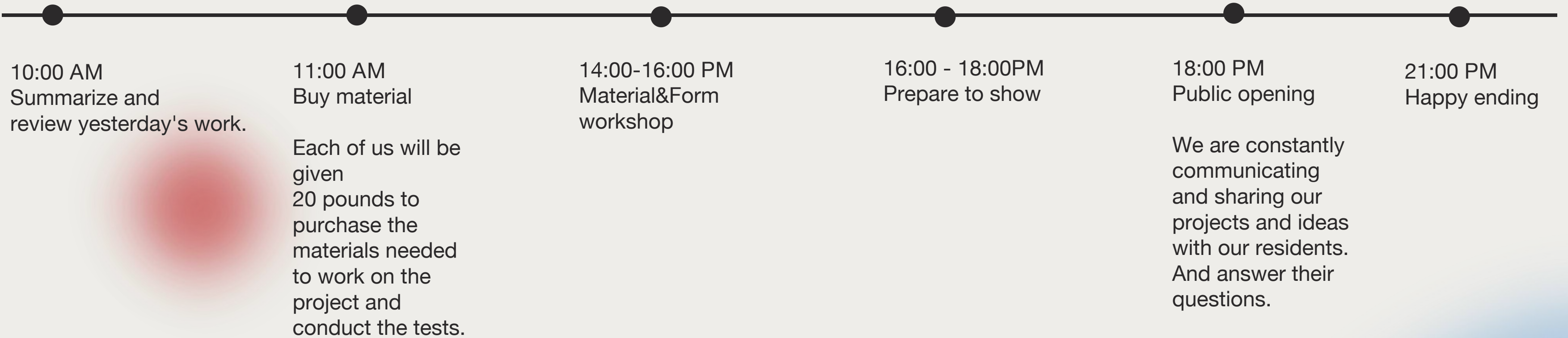
Leader: Jiahui Wang

To develop their own projects in materials and forms, using any material to make models, experimenting with the possibilities of various materials

2022.02.04



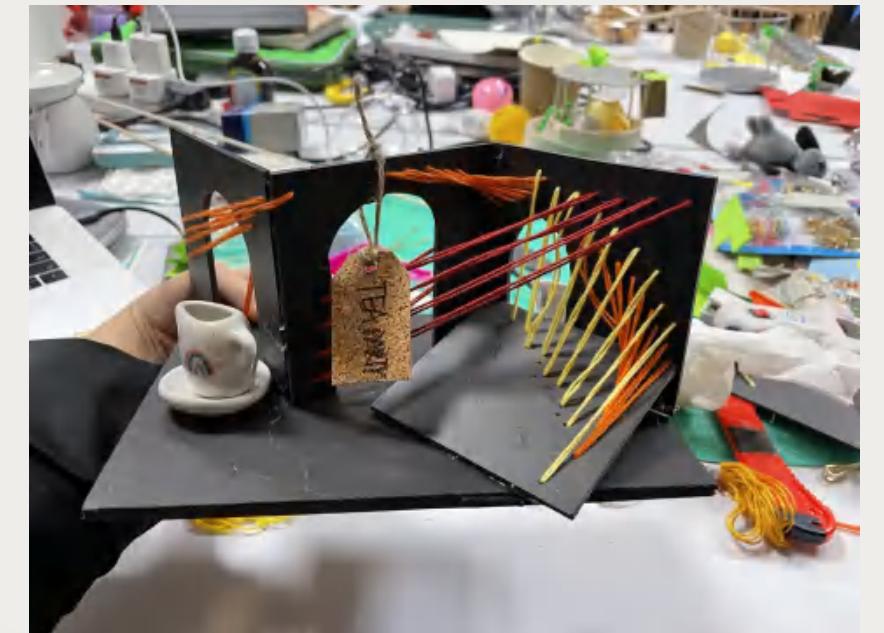
Timetable – Day 4



PROCESS

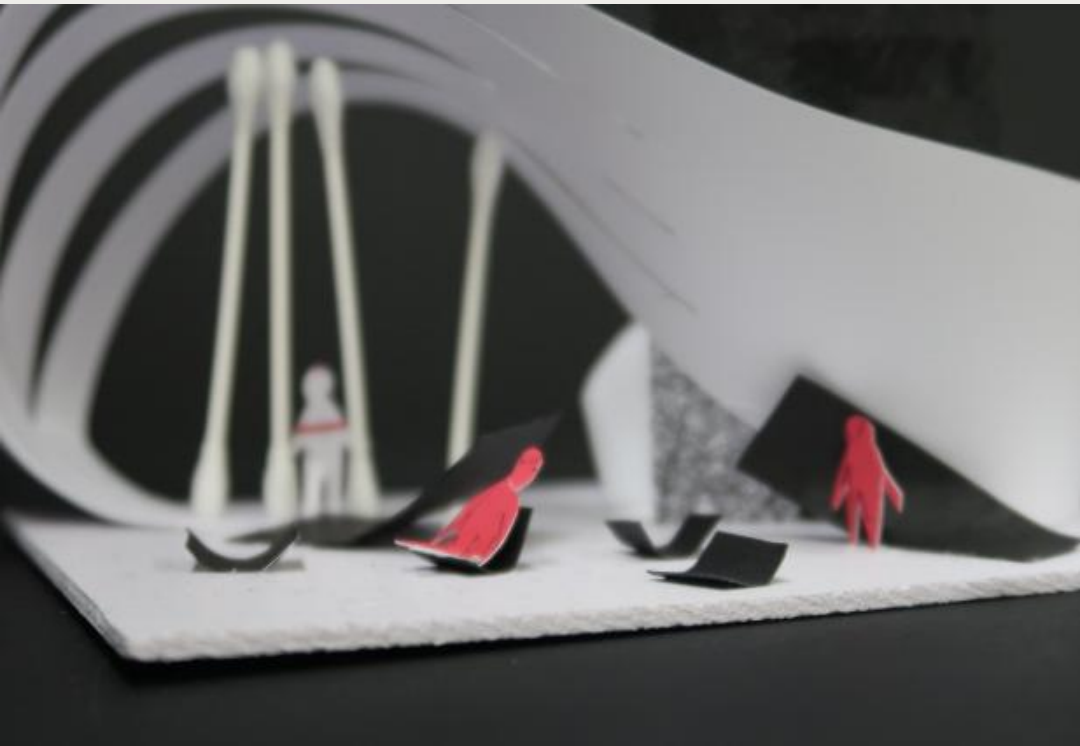
-

we will each make three narrative models to present each person's ideas about the materials.



MODEL WORKSHOP

-



a LAB.
JOURNAL

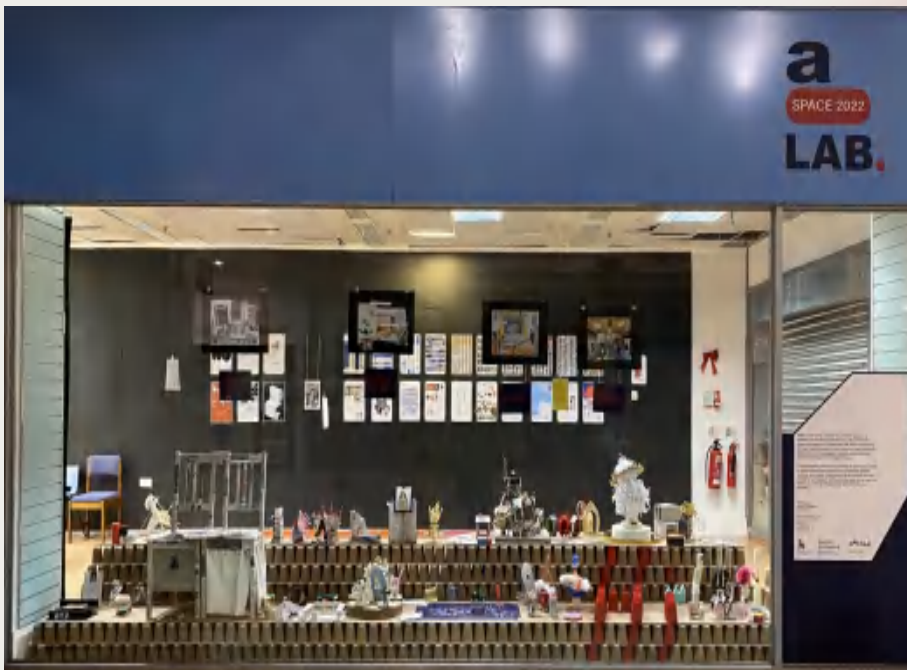
PUBLIC OPENING





THE GROWTH OF WORKSHOP

-



THE HAPPY MOMENTS

-



Watch the Spring
Festival Gala together



Record all our time



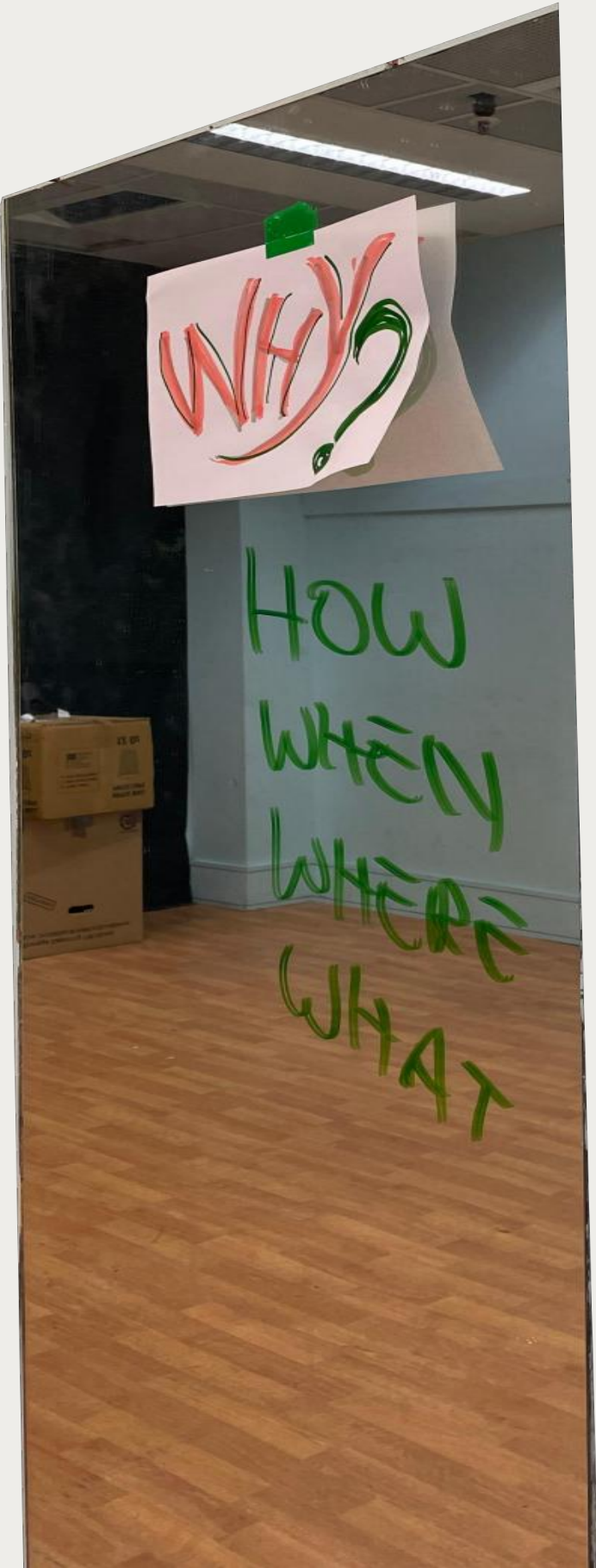
Daily leader exclusive bow



Sunset in Eastbourne

CLAUDIO SAID

-





“Thanks for all “
Nonterior forever



END –