

TEA PARTY

Vision

Re-imagine moments in the public realm of the Beacon Centre , which brings together young and old visitors by creating a space that provides mutually beneficial experiences. A space to share knowledge , exchange skills and gain a deeper understanding of one another.



Insights



#1 Community



Old people occupied the shades cafe in the Beacon Center , whilst younger people dominated the new part of the Center. There were limited spaces for both groups to mix.



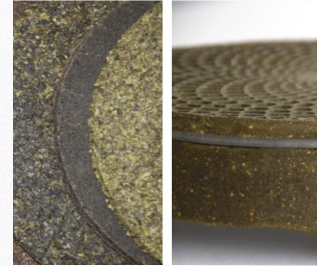
#2 Place



Tea parties organized by younger people are popping up in Eastbourne in under-the-radar, grassroots groups with a mission to make friends with older people.



#3 Sustainability



Around 6 million tons of tea leaves are wasted each year. Chinese designer Jiwei Zhou developed a pliable, clay-like material made from tea-waste using a biodegradable binding agent. The board can be CNC milled, sanded, or painted and makes use of the material's tea aroma.



Problems

#1 Age Segregation



"The UK is one of the most age-segregated countries, with communities and services often isolated by age and families increasingly fragmented. What we do know is that age segregation creates a lack of connection and trust and leads to fragmentation."

#2 Lack of Intergenerational communication



Officially named 'Eastbound' the affluent area has a median age of 71.1 years compared with a national average of 39.7 years.

#3 Bored



SAM, Local residents

"I didn't do much in Eastbound apart from walking past everything on the way to the gym."



Key Quotes & Trends

#1 AGE SEGREGATION

"There are undoubtedly many benefits to inter generational cohabitation. For old people, companionship is the most important thing. For young people, the most important thing is to relieve financial pressure. Everyone can meet new people, expand their circle of friends, and expand their knowledge at the same time"

OLIVIA GENTILE
"What is age segregation and why is it bad?"
PUBLISHED ON MAY 17, 2017
THE GRANDPARENT EFFECT

#2 BENEFIT OF CREATING JOURNIES

"Create a browsing route as an interior navigation that creates an interactive map of the exhibition space, manages visitor flow and helps construct the route."

Elvina Sharafutdinova
"The implementation of indoor navigation is the success of the exhibition? "
PUBLISHED ON DEC 01, 2020
"NAVIGINE "

#3 RECYCLING WASTE

*"Recycle and save resources
Recycling and saving energy
Recycling reduces waste in landfills
Recycling helps protect the environment"*

Dean Botham
"Why is recycling important?"
PUBLISHED ON APRIL 09, 2021
News



Key Quotes & Trends

#4 AGE INTEGRATION

"Young people aged 12 to 24 seemed the most isolated from other generations, with 61 per cent reporting that they knew a limited number of people they knew. Most young people (64 percent) say they are sometimes unsure how to talk to people much older or younger than them."

Karrie Jacobs
"Across generations living together_x0008_"
PUBLISHED ON April 23, 2019
Magazine 《STYLE》

#5 LONELY

"Eastbourne had the highest rate in the county for people reporting feeling "often or always" lonely, with 8.85 per cent. This was followed by Mid-Sussex where 7.9 per cent of residents reported experiencing severe loneliness."

Nicole Baddeley
"The loneliest places to live in Sussex"
PUBLISHED ON April 08, 2021
Article from online
<https://www.theargus.co.uk/news/19216695.loneliest-places-live-sussex/>

#6 BORED

"And they keep reminding me that the nightlife here is terrible. It doesn't seem like a particularly interesting place to be."

Hannah Evans
"What's it like being a young man in Britain's oldest town?"
PUBLISHED ON MAY 23, 2017
Article from online
<https://www.vice.com/en/article/nejmk7/what-its-like-to-be-a-young-person-in-the-oldest-town-in-the-uk>



Concept Idea Statement

Tea Party is a public realm intervention that combines tea and architecture, encouraging the idea that it is entirely normal for young and old to socialise and learn together. Building upon tea parties organised by younger people, which are popping up in under-the-radar, grassroots groups all over the UK with a mission to make friends with older people, visitors to the space inside the Beacon Centre become part of a social and learning cycle. Combining the typologies of a café and school, local young and old people get to teach whatever they fancy at organised 'Tea Parties' within a cafe space.



Concept Collage



Benefits



Mixed-age community, Copenhagen



The Intergenerational cooking

- Reducing age segregation by create a community of nurseries and nursing homes , people of all ages will live together, learning from each other and making progress together.
- Strengthen communication between the old and the young.Old people teach young people to cook by intergenerational cooking app.



Benefits



Tadashi Yoshimura Architects

- More activities, more flexible use of public space by the partition of wooden modules.



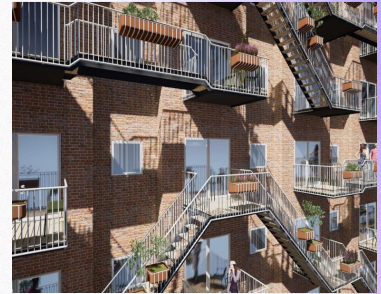
Benefits



Superblock of Saint Antoni by Leku Studio



Home Forest



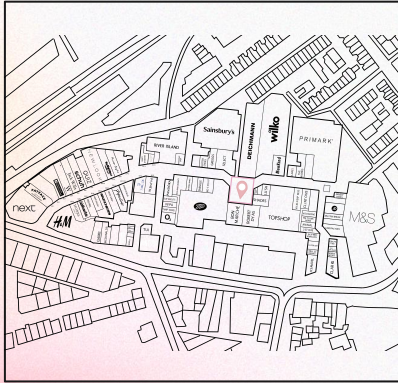
Community Balcony

- Create a friendly atmosphere that encourages people to linger. With bright yellow and simple shapes, it quickly catches the eye and divides the space to create a pleasant atmosphere.
- Reduce loneliness and protect your physical and mental health by creating a sense of the natural environment.
- Promote social interaction through balcony connectivity.



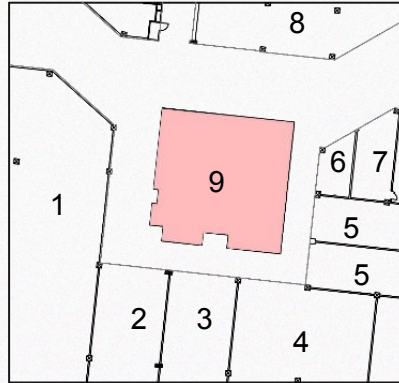
Site

PLAN



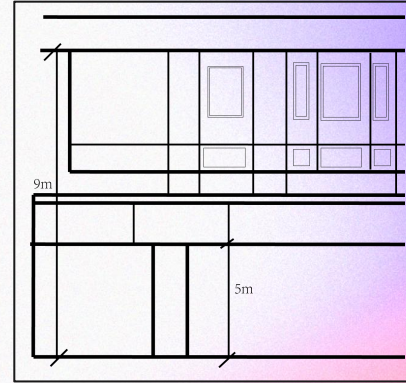
My project is located in the center of the Beacon Centre

LOCATION



1.Boots 2.Bon Marche 3.Robert Dyas
4.Top Shop 5.Shades 6.Perfume Shop
7.Lush 8.Deichmann 9. Vacant: 624sqm

SECTION



The height of the field is 9 meters



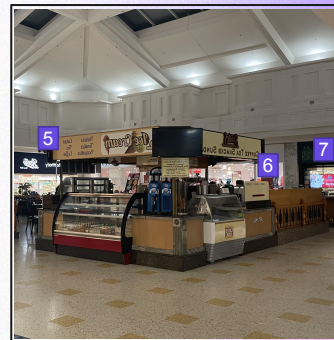
Site



1.Lush
2.Perfume Shop



3.Robert Dyas
4.Bon Marche



5.Boots
6.Warren James
7.Holland & Barratt



