

Across RCA

# AirAware Device

Across RCA

# Airy

Dual Hinge- portable air purifier that visualize the air quality

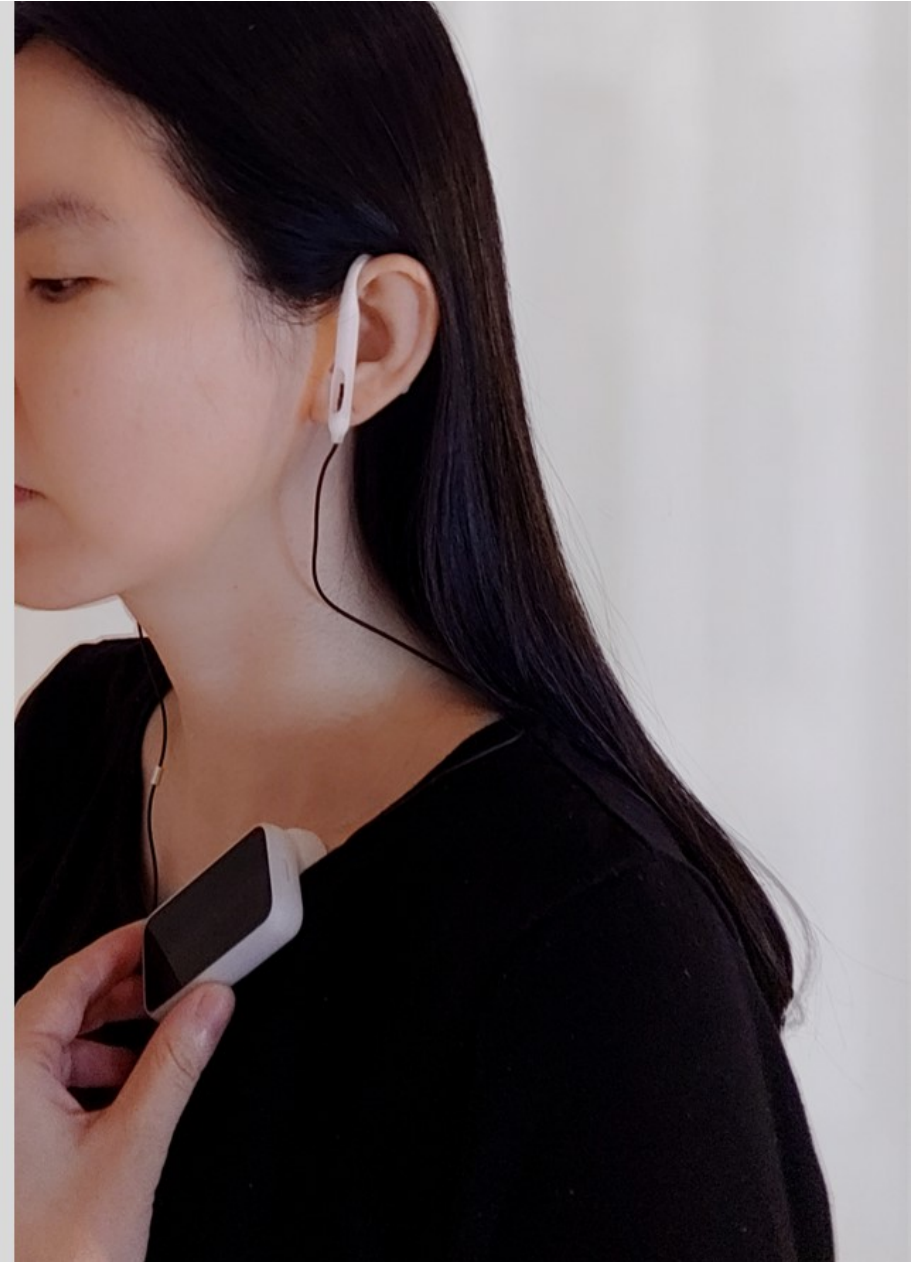


AcrossRCA

# Airy

Dual Hinge- portable air purifier that visualize the air quality

The hinge structure allows the air purifier and air quality sensor to be mounted together and can be implemented in a small size. As a folding device, it can be used by clipping it to the collar through an internal magnet.



AcrossRCA

# Airy

Dual Hinge- portable air purifier that visualize the air quality

The hinge structure allows the air purifier and air quality sensor to be mounted together and can be implemented in a small size. As a folding device, it can be used by clipping it to the collar through an internal magnet.



Checking air quality

# Airy

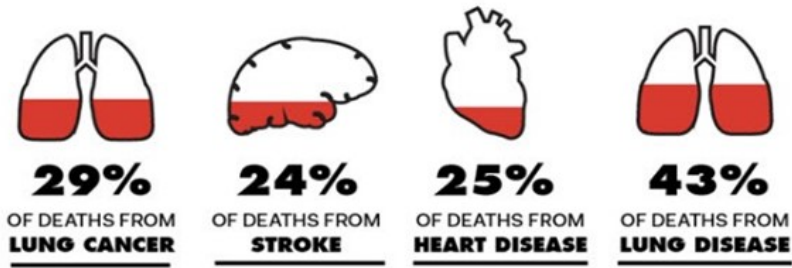
## PROBLEM TO SOLUTION

Since air circulates invisibly to the eye, This causes serious problem. For example, due to the installation of air purifiers in the wrong location, people can breathe dirty air accidentally which cause accidents that can even take lives.

### A | PROBLEM

# THE INVISIBLE KILLER

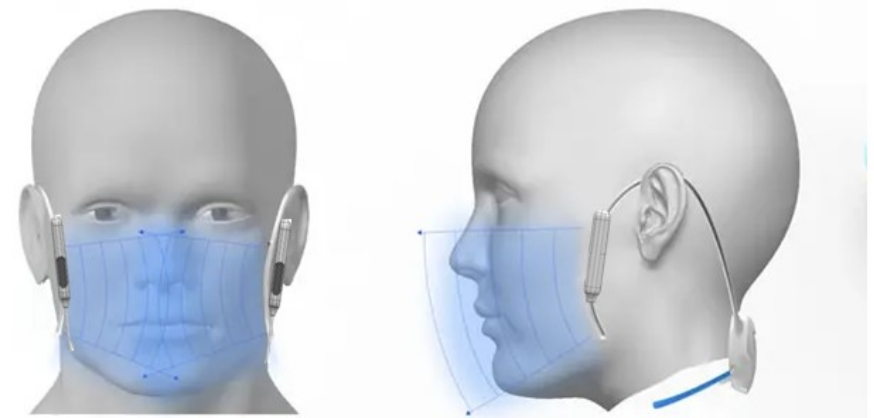
Air pollution may not always be visible, but it can be deadly.



### C | SOLUTION

Invisible to visible

By wearing it on the ear, Airy does not only provide clean air all the time, but also its air quality sensor informs the people about the air condition that they are currently breathing.

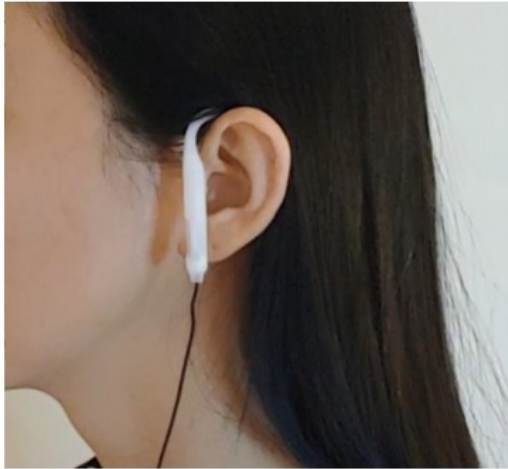


AcrossRCA

# Airy

## KEY FEATURES

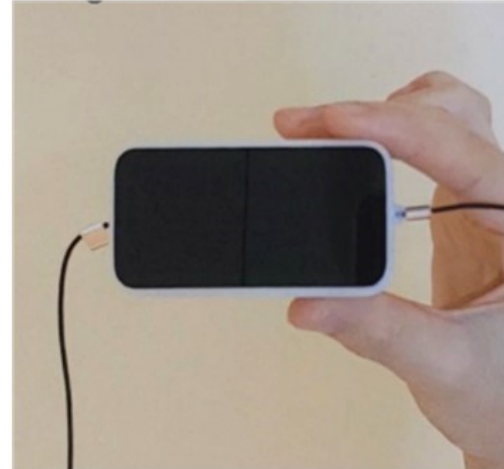
This ear wearable design allows a high ion generation rate within 15 cm.



Folding device can be used by clipping it to the collar.



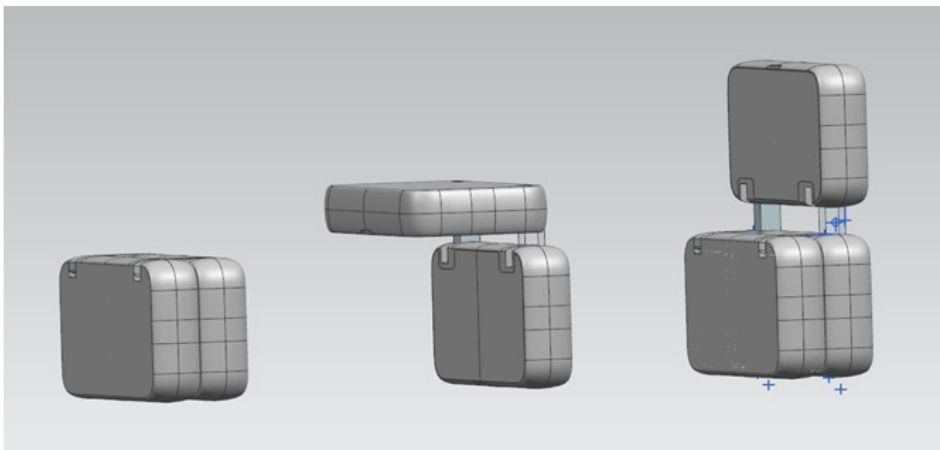
The remote control measures the air that people are currently breathing.



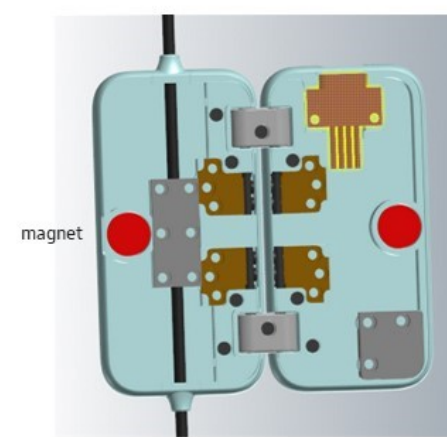
Ergonomic design allows stable air supplying by tracking movement



**A | OPERATION** There are No other products having portable air purifiers with hinge structures. The hinge structure allows the air purifier and air quality sensor to be mounted together and can be implemented in a small size.

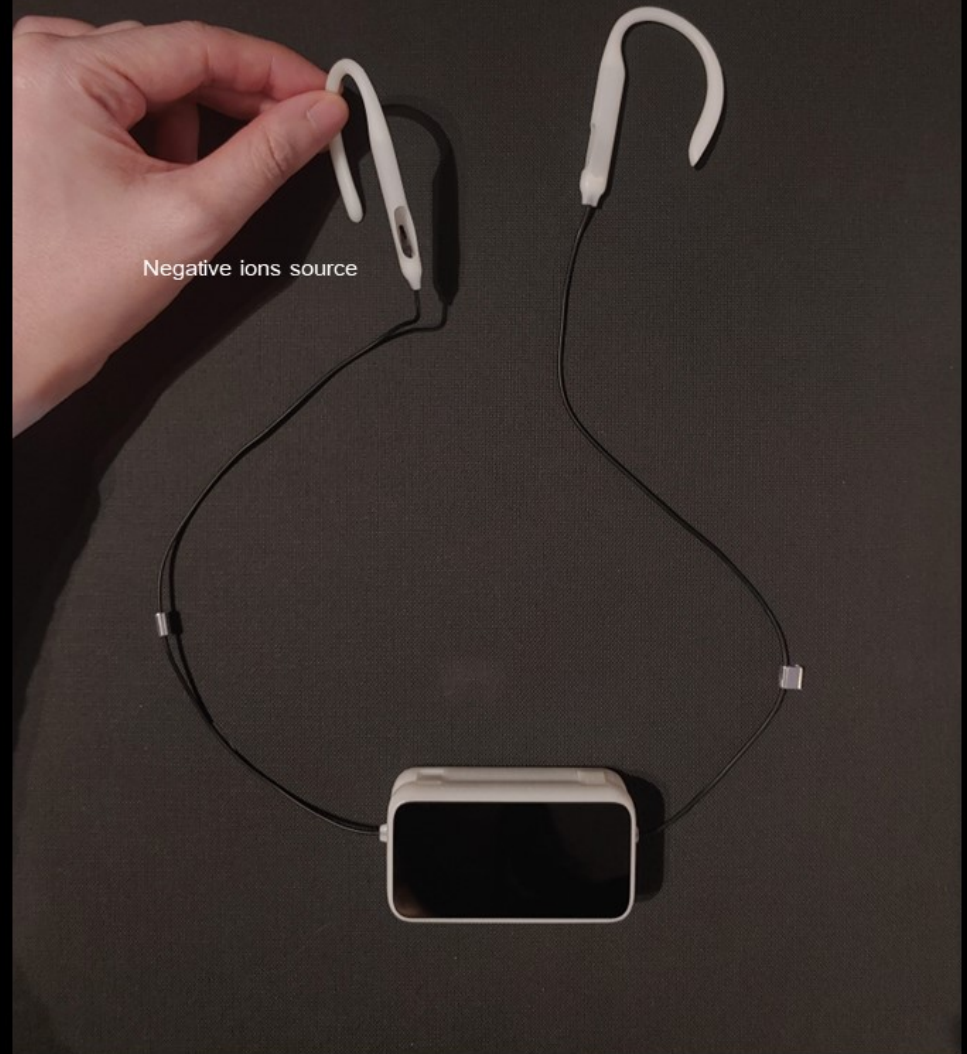


**B | STRUCTURE** Airy includes a characteristic internal magnetic structure to clip its body well.



AcrossRCA

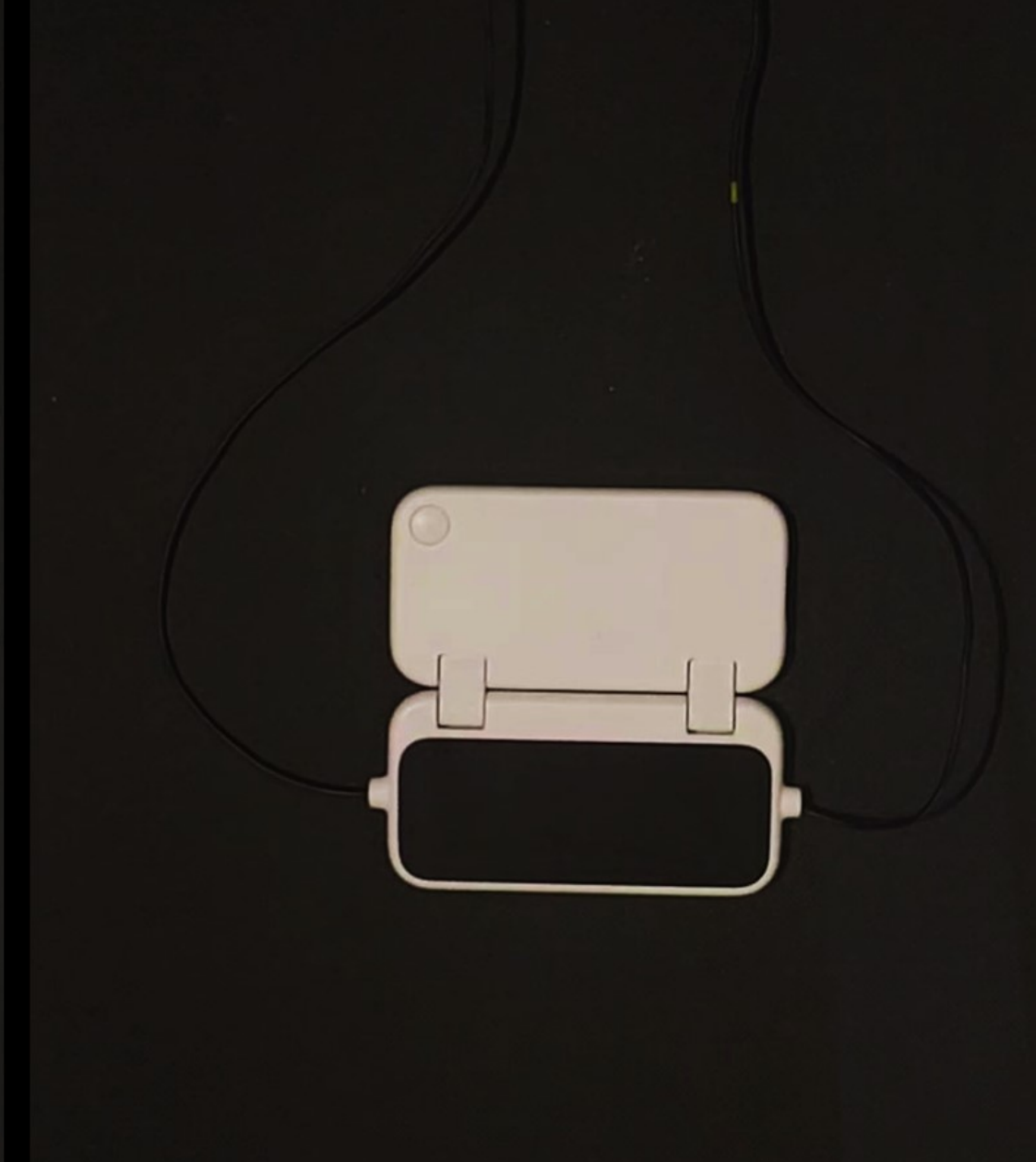
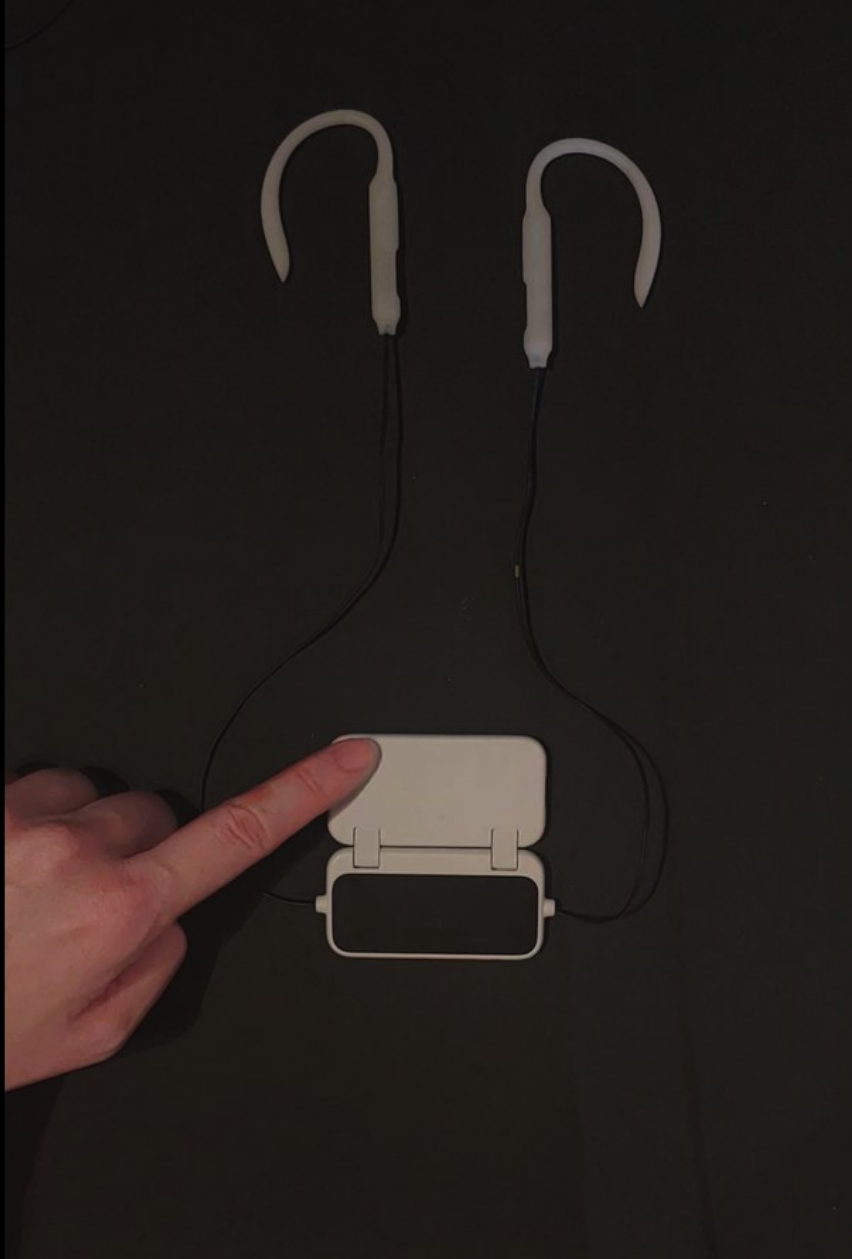
Airy



Negative ions source

AcrossRCA

Airy

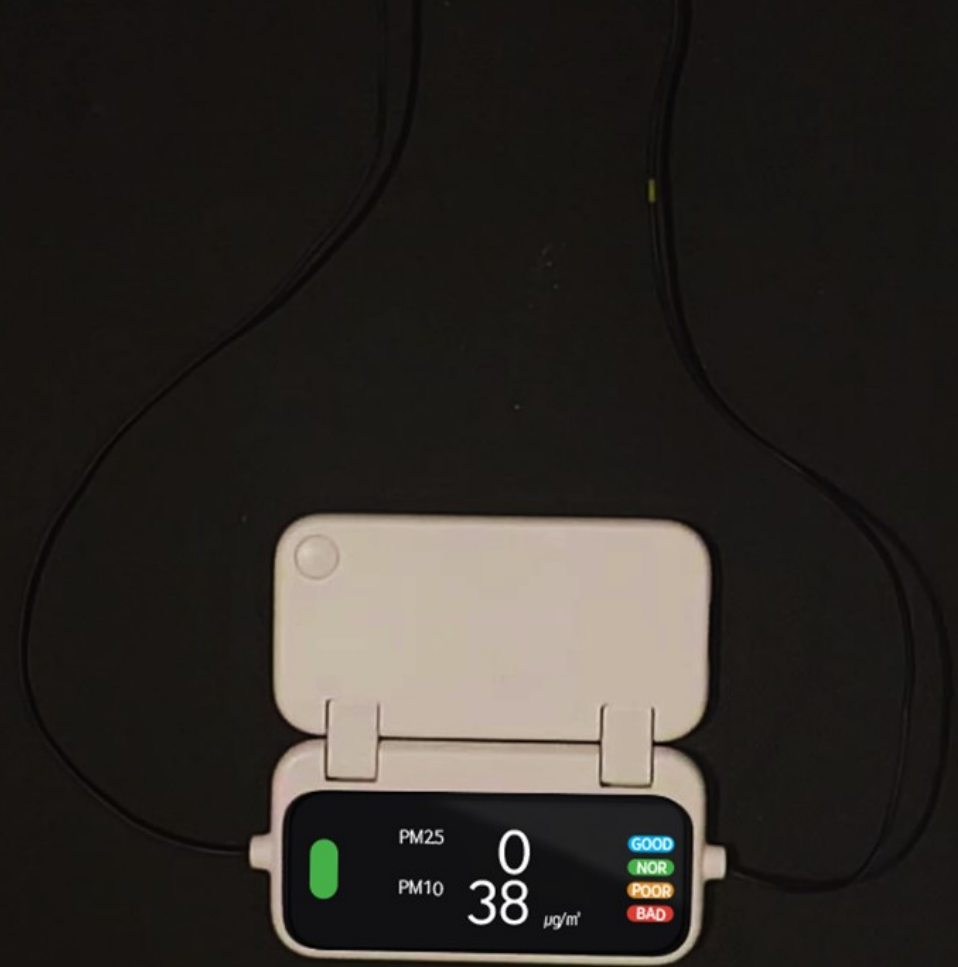




AcrossRCA

# Airy

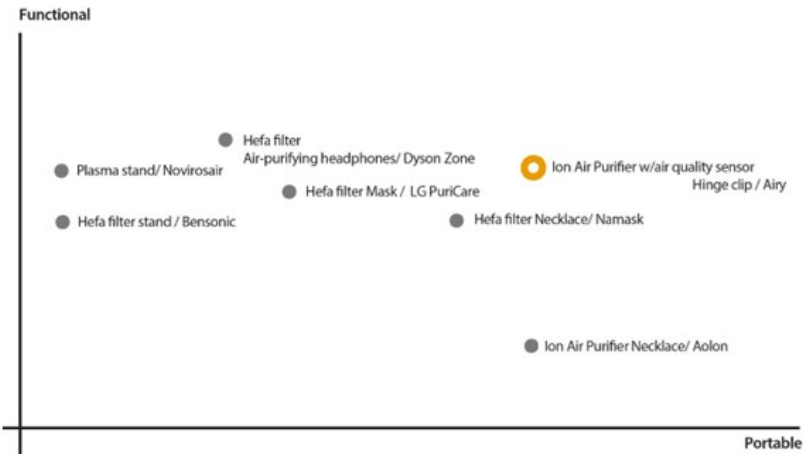
Air quality sensor included



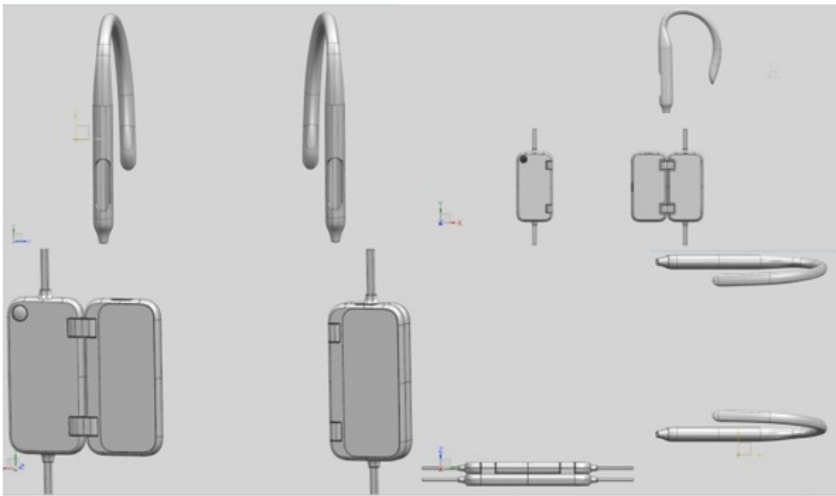
# Airy

## EXPRESSING THE IDEA

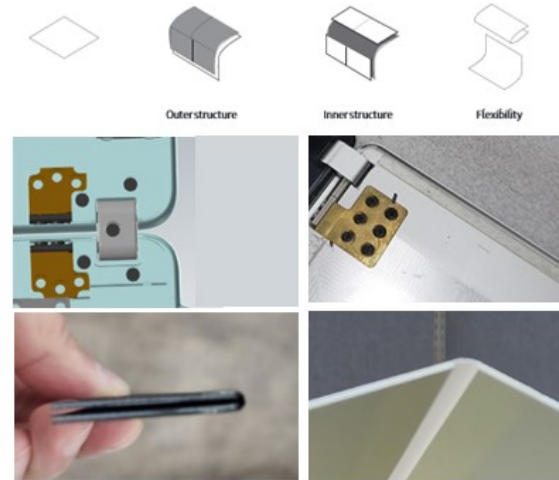
A | Perceptual map of portable air purifier



C | NX 3D



B | Idea sketch



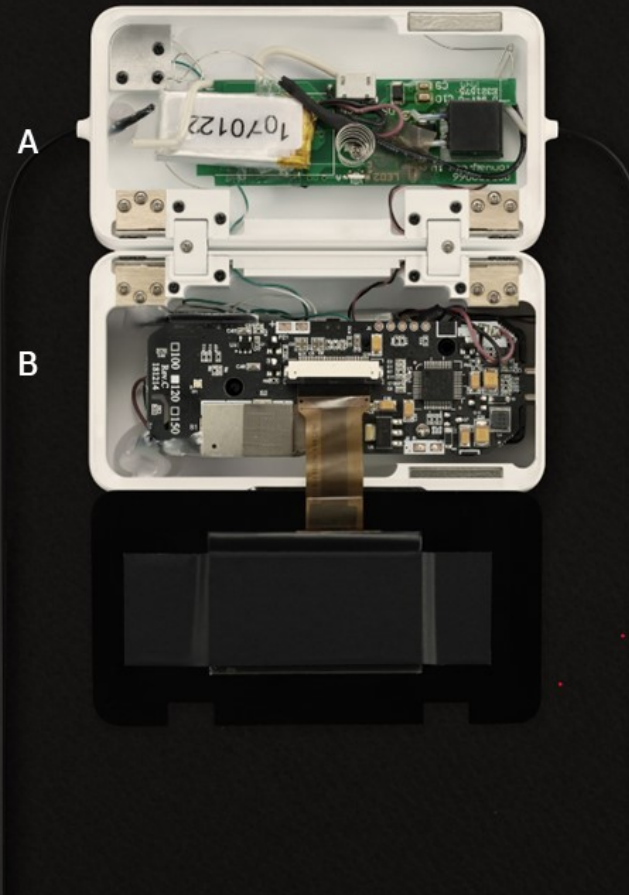
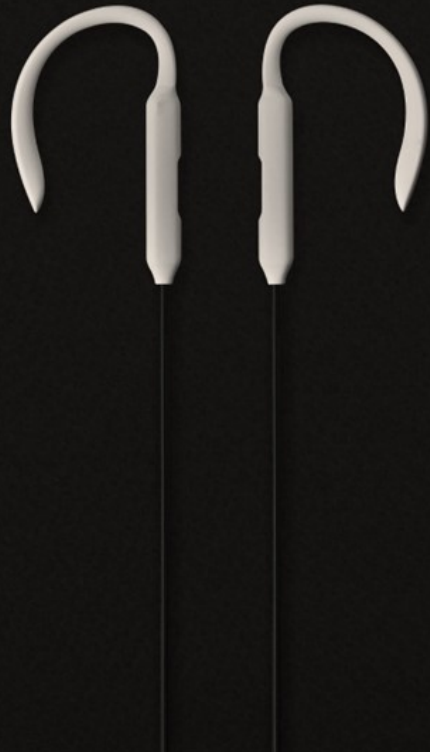
D | Design development



AcrossRCA

# Airy

WORKING PROTOTYPE

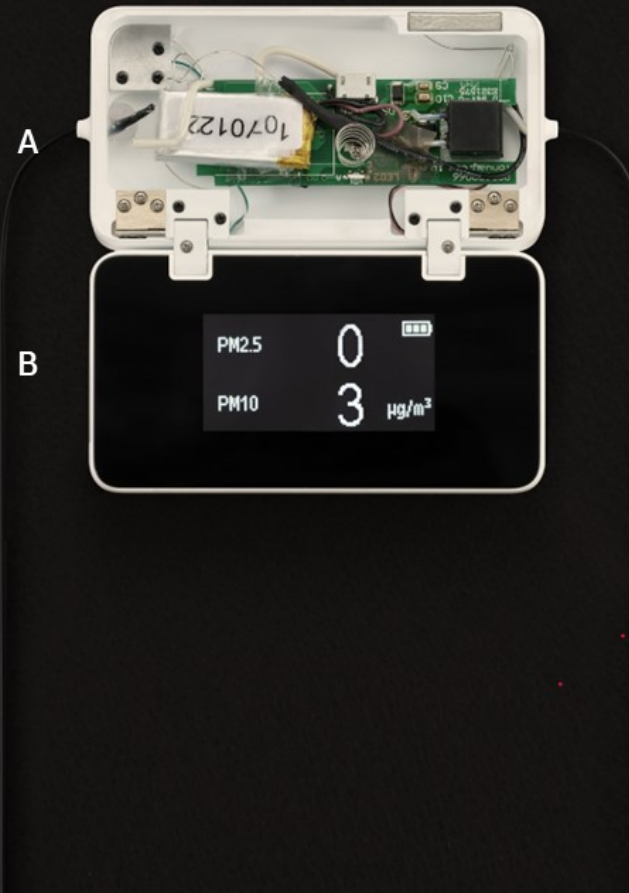


- A Ioniser PCB, Power key
- B Air quality sensor PCB, Display, Battery

AcrossRCA

# Airy

WORKING PROTOTYPE



A

B

PM2.5	0	■■■
PM10	3	µg/m <sup>3</sup>

- A Ioniser PCB, Power key
- B Air quality sensor PCB, Display, Battery

AcrossRCA

# Airy EXPERIMENTATION



AcrossRCA

# Airy EXPERIMENTATION

