



Visual Language of Data Centre

Data Symmetry (Digital 11B, Team5)

The AI data centre

-A digital brain that supports the new Internet era, a cyberlife

AI systems rely on massive computing power and specialized hardware facilities.

By configuring sever hardware into a particular structure, we aim to visualize the workings of a living system. This project will bring this digital system that supports our internet age to reality as a physical installation.

We aim to simulate the intricate mechanical core of an AI system by constructing a micro server system. The Data Centre is one part of the whole digital system, the vast number of algorithms, code and electricity are also the vital organs and blood that make up this cyber body.

Design of the living system

The analogy of AI server system to Organs

- **Hardware (Data Centre)**

- Physical Structure: In this analogy, the hardware of AI can be seen as its 'physical structure', providing the necessary support and power.

- **Software and Algorithms**

- Brain and Nervous System: The software and algorithms are akin to the brain and nervous system of a living being, responsible for processing information, making decisions, and learning.

- **Data**

- DNA and Genetic Information: Data can be considered the DNA of AI, guiding and influencing its behavior and learning processes.

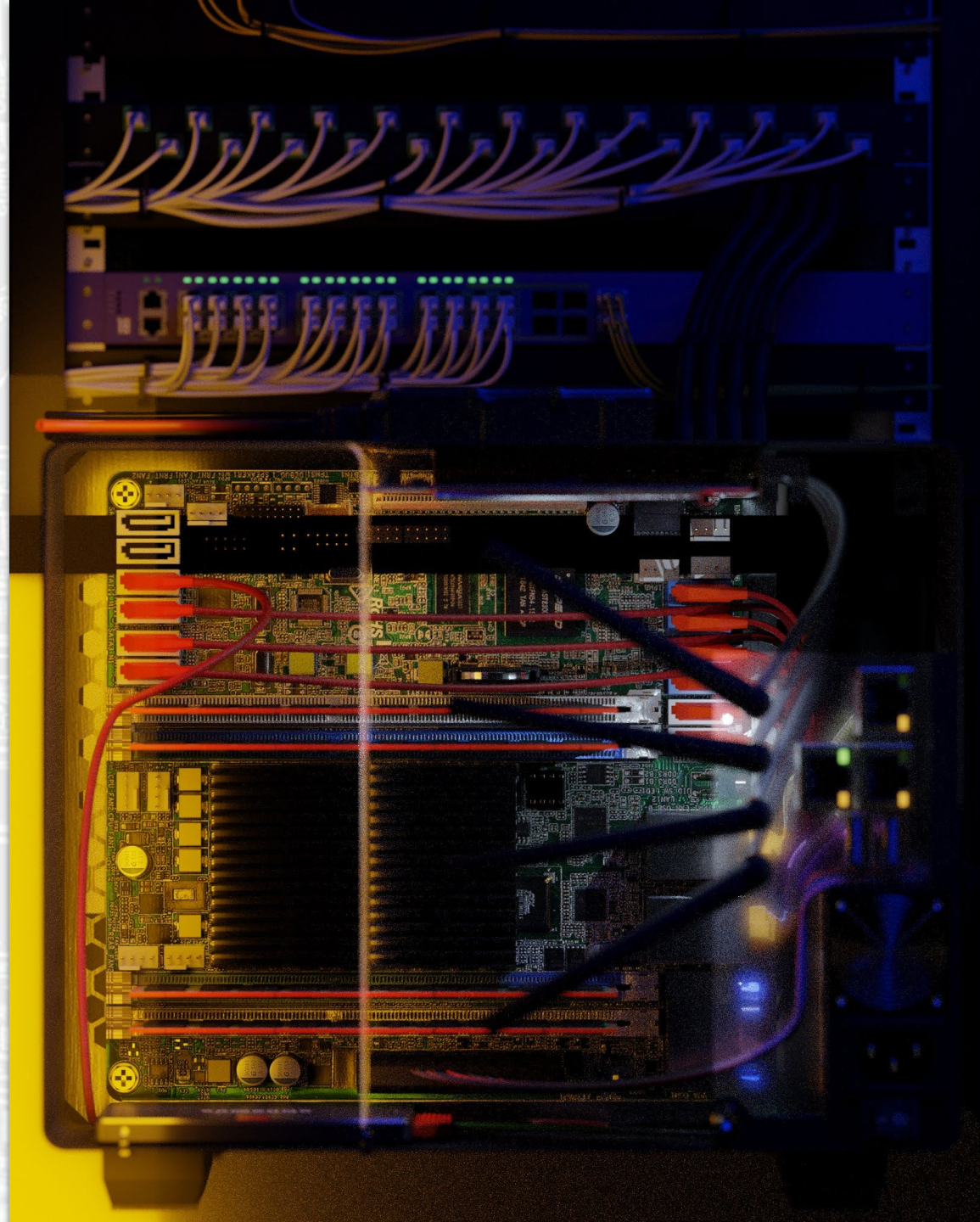
- **Sensors and Input Devices**

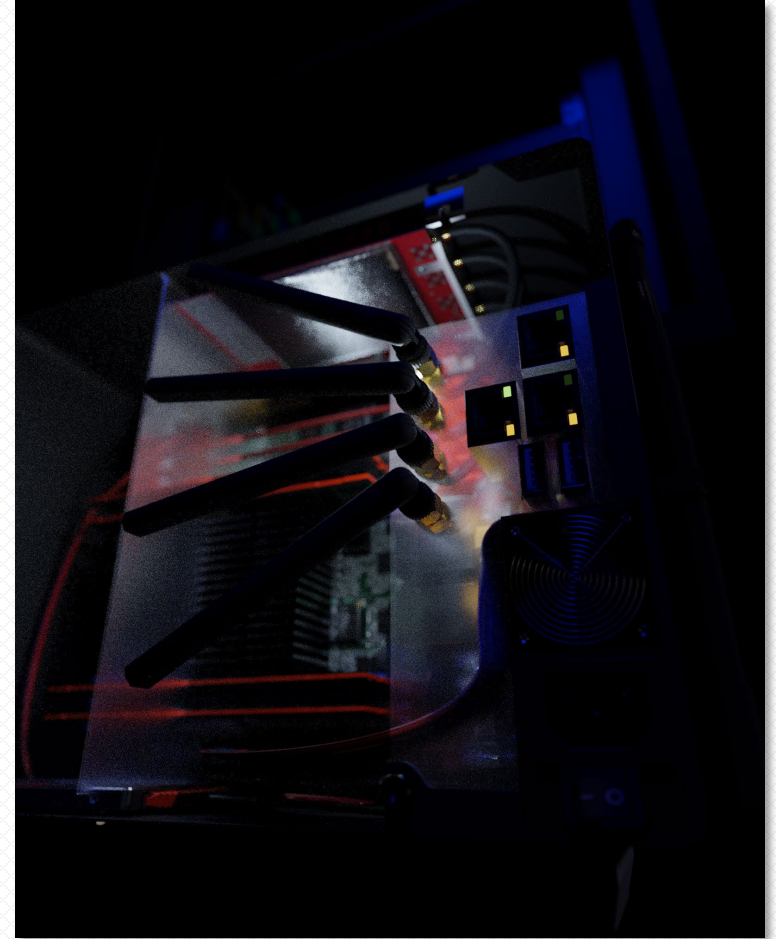
- Sensory Systems: Similar to the sensory systems of living beings, these devices enable AI to perceive and interact with its environment.

Visualization

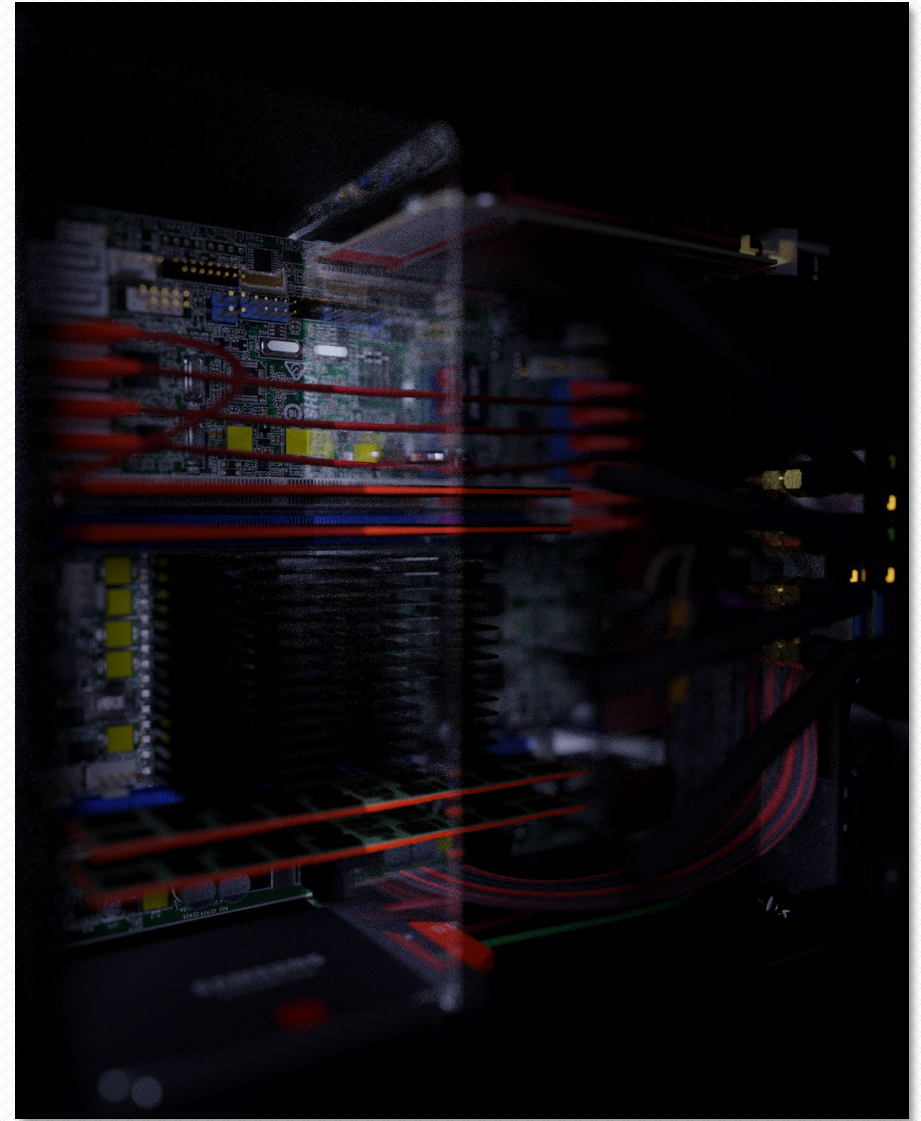
Rendered images

The model will be 3D printed and assembled into a small physical installation. We plan to build in lights and paint it and make this small model the physical brain of this mini digital system.





Rendered images



Rendered images

Visualization

The model for 3D printing

