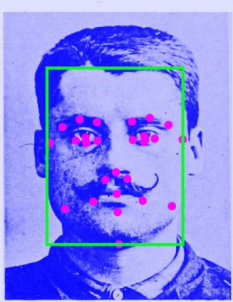




Mind Bond



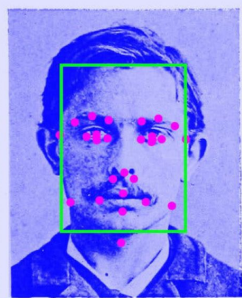
1. Nez de hauteur petite et de largeur petite.



2. Nez de hauteur petite et de largeur moyenne.



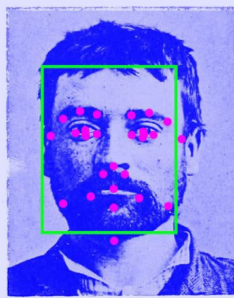
3. Nez de hauteur petite et de largeur grande.



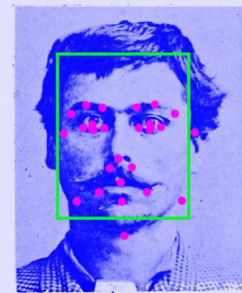
4. Nez de hauteur moyenne et de largeur petite.



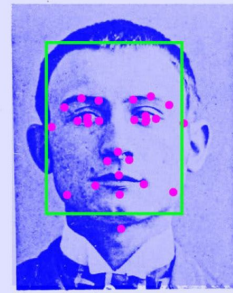
5. Nez de hauteur moyenne et de largeur moyenne.



6. Nez de hauteur moyenne et de largeur grande.



7. Nez de hauteur grande



8. Nez de hauteur grande



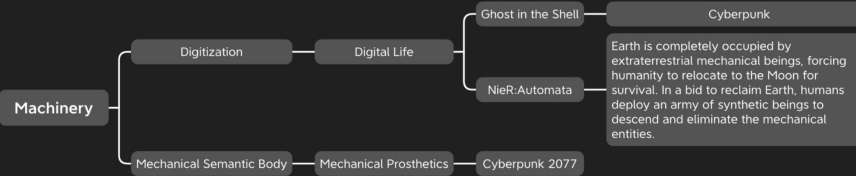
9. Nez de hauteur grande

THE WORLDVIEW BEGINS WITH CONTRADICTIONS AND CONFRONTATIONS. ENABLE OPPOSING SIDES TO COLLABORATE ON ONE THING.

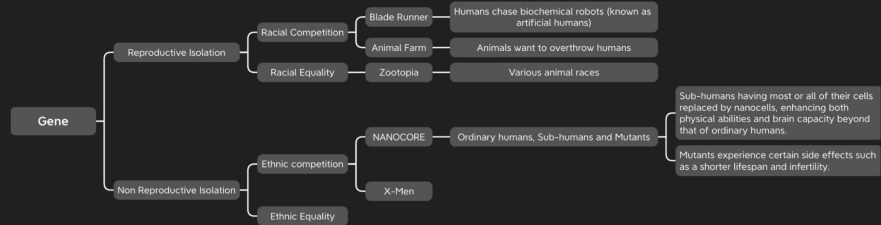
Artificial Intelligence Relates to Race. Problems with the current Identification system. The issues in world history are now entwined with artificial intelligence, influencing human life in a seemingly scientific and fair manner.

Fairness or Accuracy of the Identification System

MACHINERY



GENE



OTHERS





MindBond Worldview

In the near future, people's identity recognition will undergo radical changes in different contexts, such as surveillance and digital verification. Concerns about the fairness and accuracy of identification systems of the old era have led to the development of MindBond.

MindBond is a wearable device that collects brainwave data from users. This technology utilizes human brainwaves to identify individuals beyond physical characteristics and societal labels.

MindBond, an advanced artificial intelligence device, is the core of a significant evolution in biometric technology. The device can accurately read and interpret brainwave data. Its principle is to make each person's brainwave patterns unique and complex, like fingerprints. MindBond can capture rich information reflecting thoughts, preferences, memories, and even subconscious features. It's inspired by octopus in both visual and functional aspects, with three distinct modes that enable users to change their mode according to their own preferences.



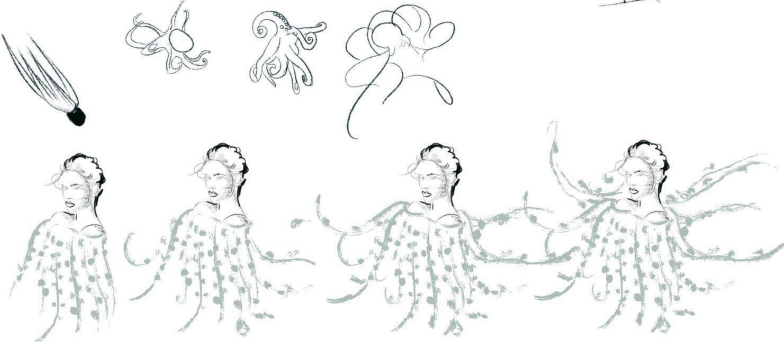
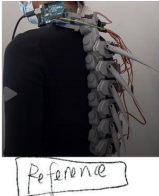
Future Wearable Device

In the envisioned future electronic world, it is a language-free world where humans have regressed to rely on biological signals for recognition and communication, living symbiotically with animals and plants.


Animal mimicry




Shrink → expand



Plant mimicry



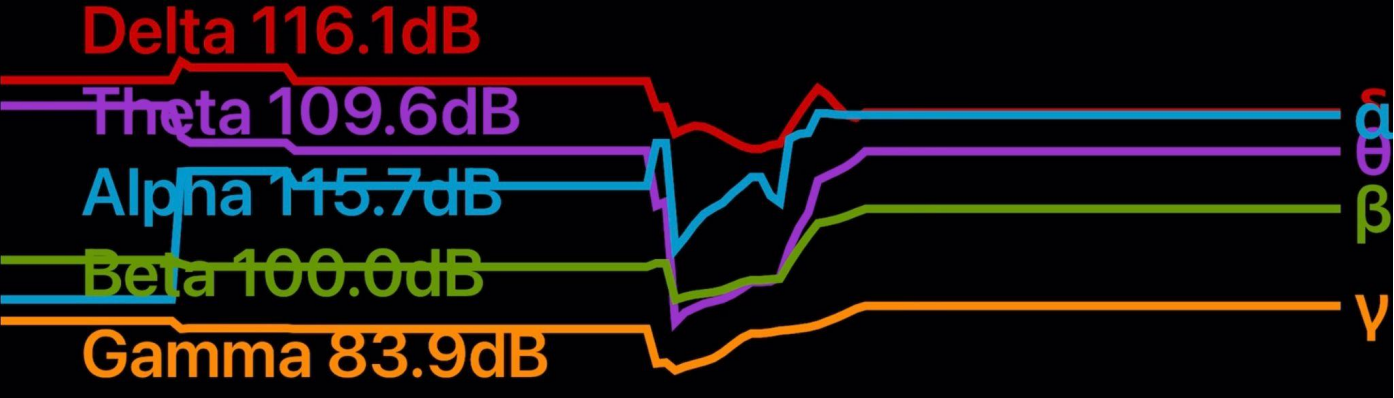
Fold → open



Brainwave Visualization



Brainwaves are special features that can be used for identity recognition.



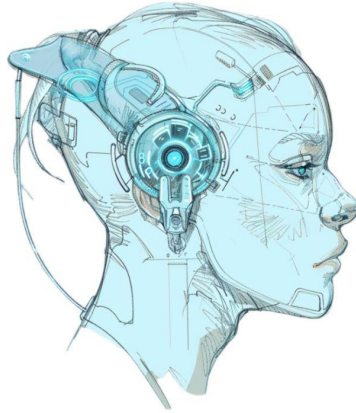
Brainwave Visualization



Concept & Design



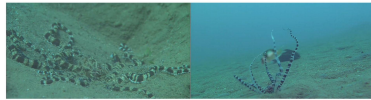
real-self.



hide type



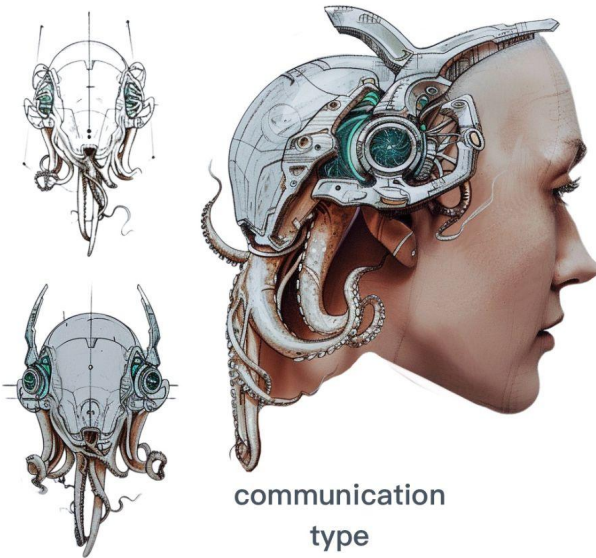
mind-style (mental)
communication type



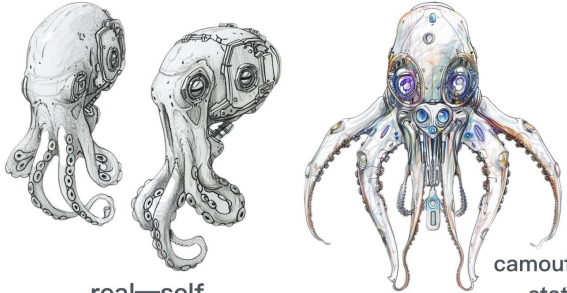
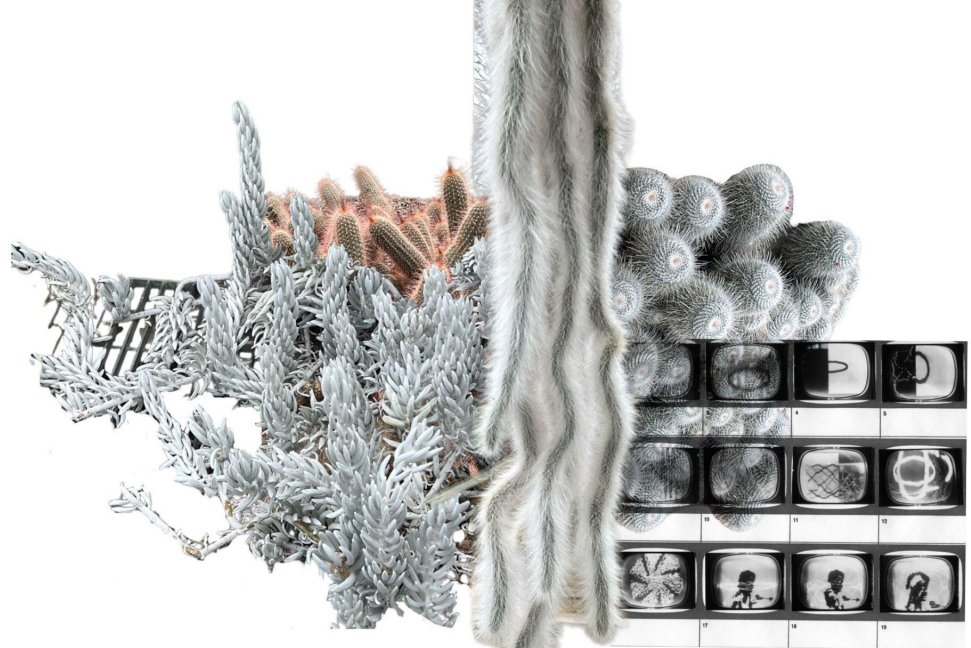
King Octopus M Batesian



Concept & Design



communication
type



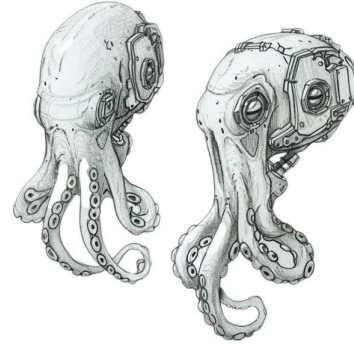
real—self

camouflage
state

In the future, cross-species communication could lead to equality and harmony, fostering peaceful coexistence on Earth.

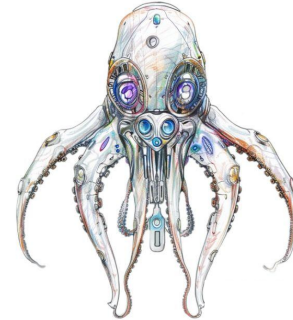
Real Self Mode

The first mode, “Real Self,” is used in the identification process. This mode captures and displays unique data from an individual’s brainwaves. It weaves thoughts, memories, and subconscious features into a comprehensive digital profile. It’s like a brain fingerprint, so everyone can be identified using this mode.



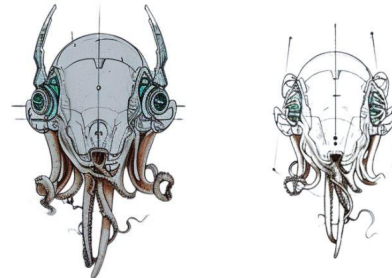
Hide Type Mode

However, this brainwave-based identity recognition system brought challenges and ethical considerations. It raised privacy concerns, fearing governments or businesses may abuse their privacy. Based on emphasizing privacy, MindBond provides a “Hide Type” mode, allowing individuals to protect their data. Just like octopuses can camouflage themselves, this mode will enable users to voluntarily share their information, providing more controllable solutions for those unwilling to disclose personal data at any time.



Mind Style Mode

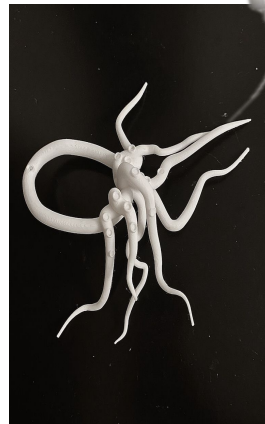
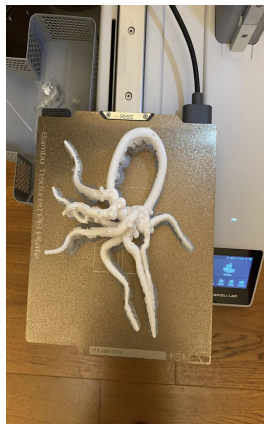
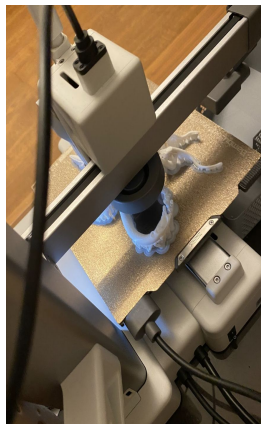
The last mode is the “Mind Style,” which transforms brainwave data into sound, promoting communication without needing vocal expression. The inspiration for this feature comes from the octopus’s ability to communicate through color changes and body posture. Individuals can share their thoughts without speaking by using the sound generated by brainwaves. “Mind Style” mode not only enhances communication between people but also transcends the boundaries of species.



1st. Version of Physical Device

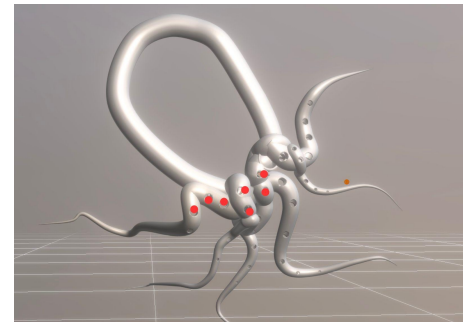


3D Modeling



Printing Process

1st. Version of Physical Device



Conclusion

In the future, MindBond will be a symbol of progress, providing a new way of identity verification and communication.

As humans continue to navigate in the field of technology,

MindBond has demonstrated the potential of technology to shape the future.

In the future, identity will be accepted in all complexities, and communication will become harmonious across species.

References

<https://zachblas.info/works/facial-weaponization-suite/>

<https://www.theguardian.com/world/2020/feb/01/privacy-campaigners-dazzle-camouflage-met-police-surveillance>

https://mediacatmagazine.co.uk/qa-cap_ables-rachele-didero-on-fashion-against-facial-recognition/

<https://www.nytimes.com/2019/07/10/opinion/facial-recognition-race.html>

https://docs.google.com/document/d/1rimyBrO30w3B4edw_08_Jw_S9lqaj5qkwcZ1-tSo0U4/edit?usp=sharing