

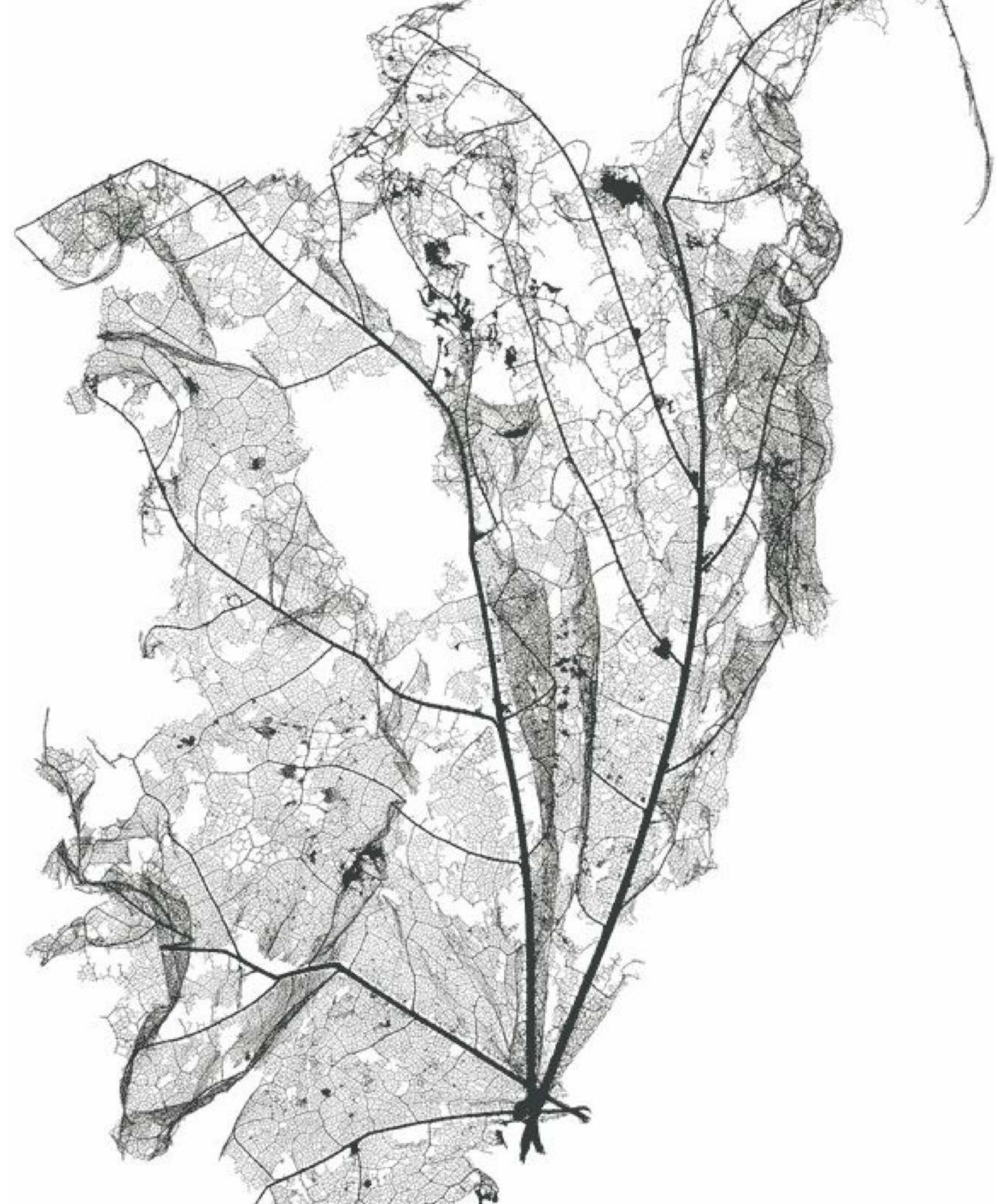
Our Behaviour Matters Nature

Brief

Plants (trees) play an essential role in the functioning of life on Earth. These are some of the benefits that people gain from natural systems. The daily existence of human beings is also directly influenced by trees. Trees shade and cool, clean the air, improve the soil, improve health and well being, increase property value and support wildlife, etc.

Unfortunately, the changing climate increases stressors that weaken tree resilience, disrupting forest structure and ecosystem services. Rising temperatures lead to more frequent droughts, wildfires, and invasive pest outbreaks, leading to the loss of tree species.

We hope that through a form of virtual artistic expression people will use senses to explore trees in a new way, people will be able to feel the urgent environmental pressure. Humans can support plant survival by making sustainable lifestyle decisions.

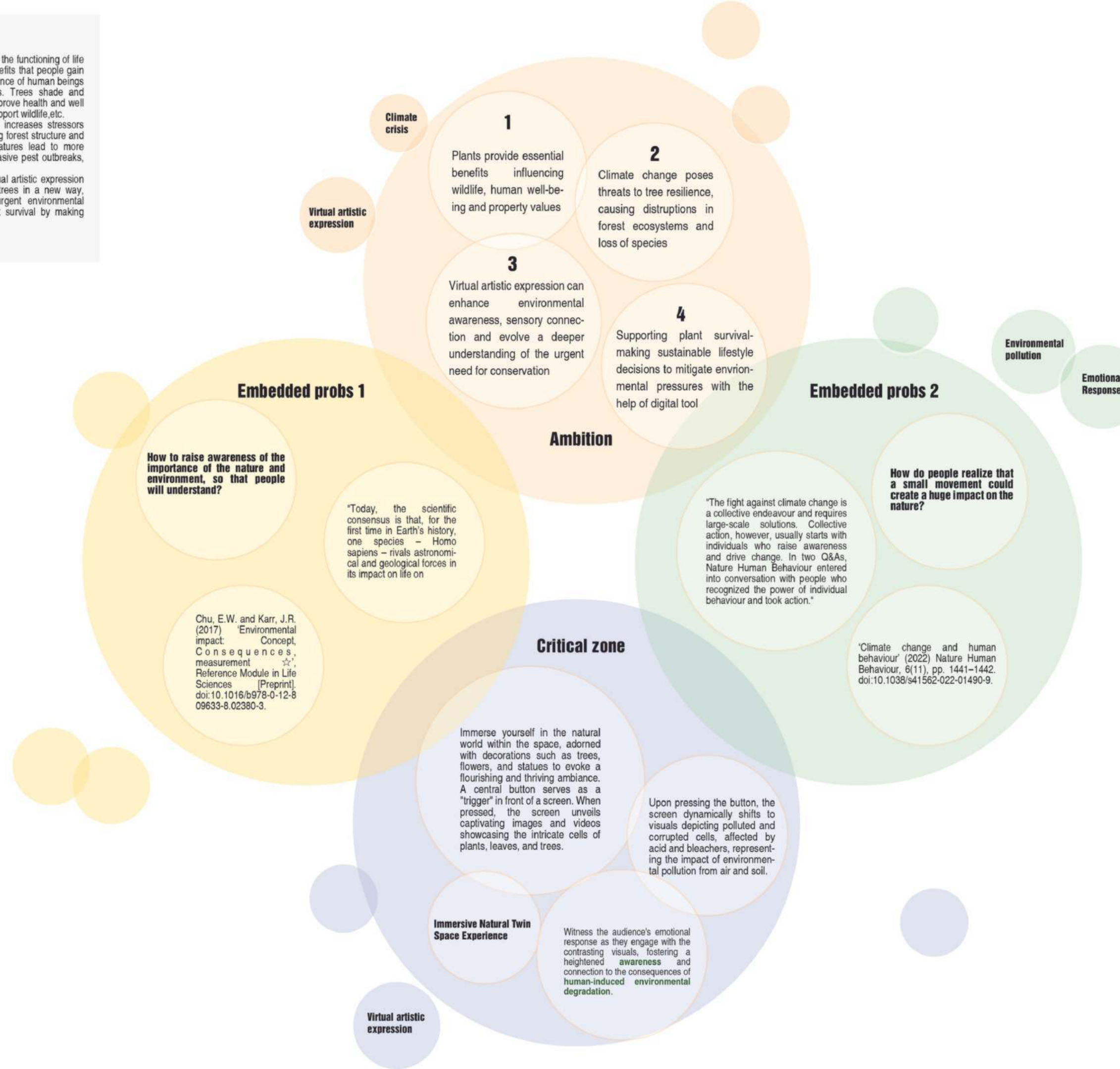


Overview

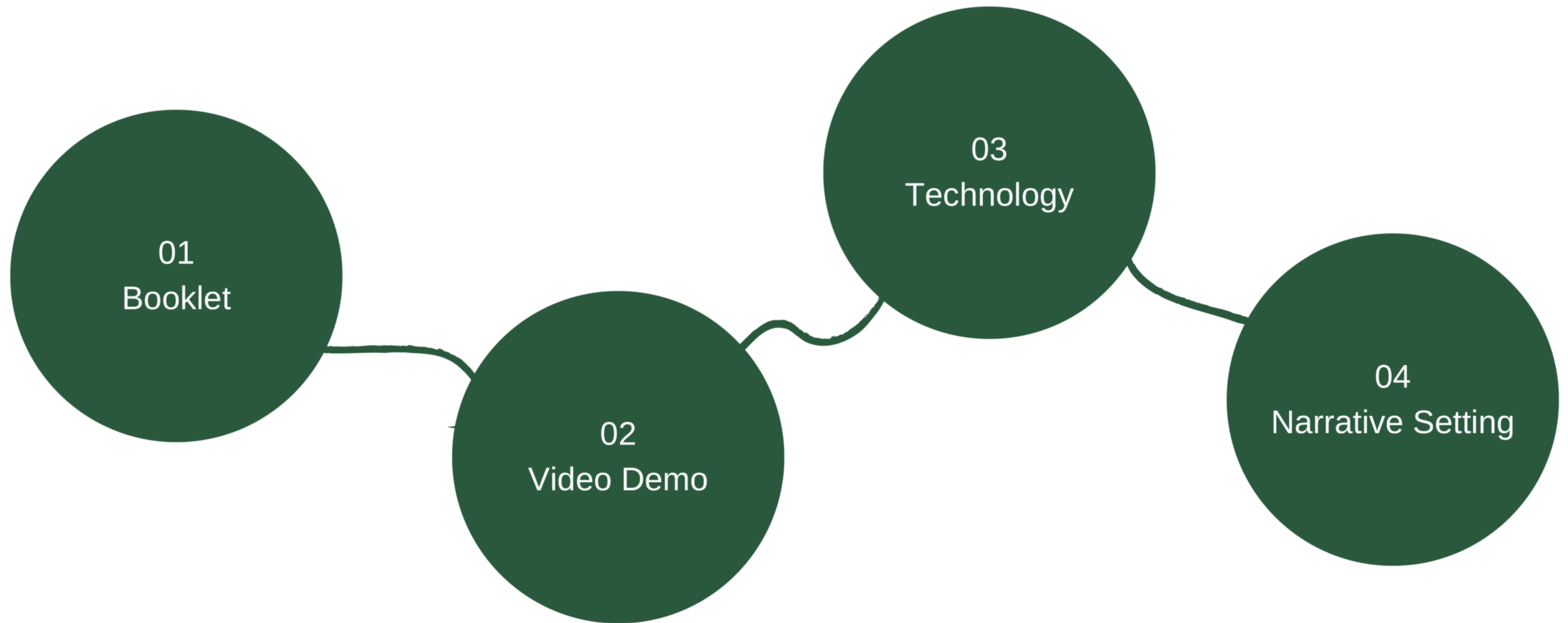
Plants(trees) play an essential role in the functioning of life on Earth. These are some of the benefits that people gain from natural systems. The daily existence of human beings is also directly influenced by trees. Trees shade and cool, clean the air, improve the soil, improve health and well-being, increase property value and support wildlife, etc.

Unfortunately, the changing climate increases stressors that weaken tree resilience, disrupting forest structure and ecosystem services. Rising temperatures lead to more frequent droughts, wildfires, and invasive pest outbreaks, leading to the loss of tree species.

We hope that through a form of virtual artistic expression people will use senses to explore trees in a new way, people will be able to feel the urgent environmental pressure. Humans can support plant survival by making sustainable lifestyle decisions.



Contents



A microscopic view of plant tissue, likely a cross-section of a stem or root, showing various cellular structures. The image is overlaid with a semi-transparent green filter. The text 'Booklet' is prominently displayed in white on the right side of the image.

Booklet

In addition to the interactive video installation, we produced exquisite booklets for this project, which enhances the expression of our consciousness through text and graphics, hoping to increase people's awareness of ecological protection.

3x booklet A5

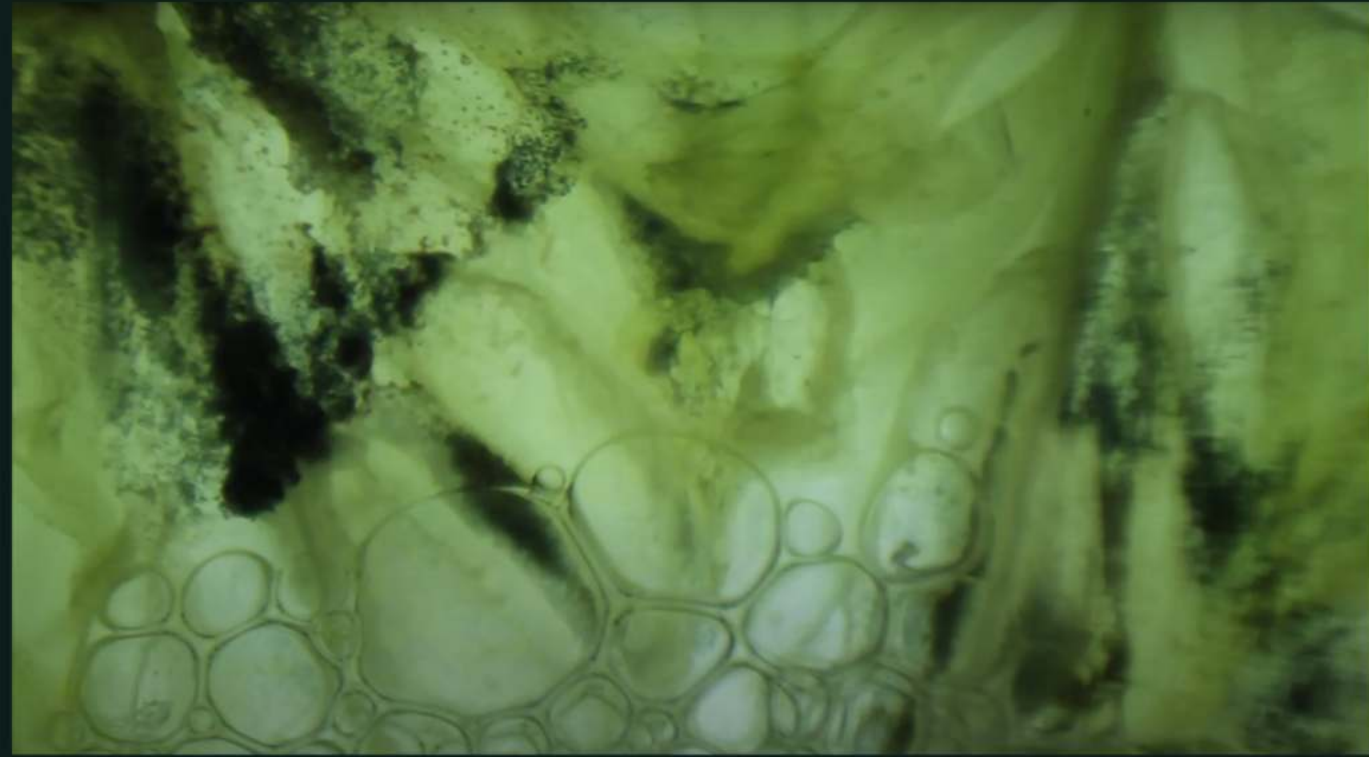


1x brochure

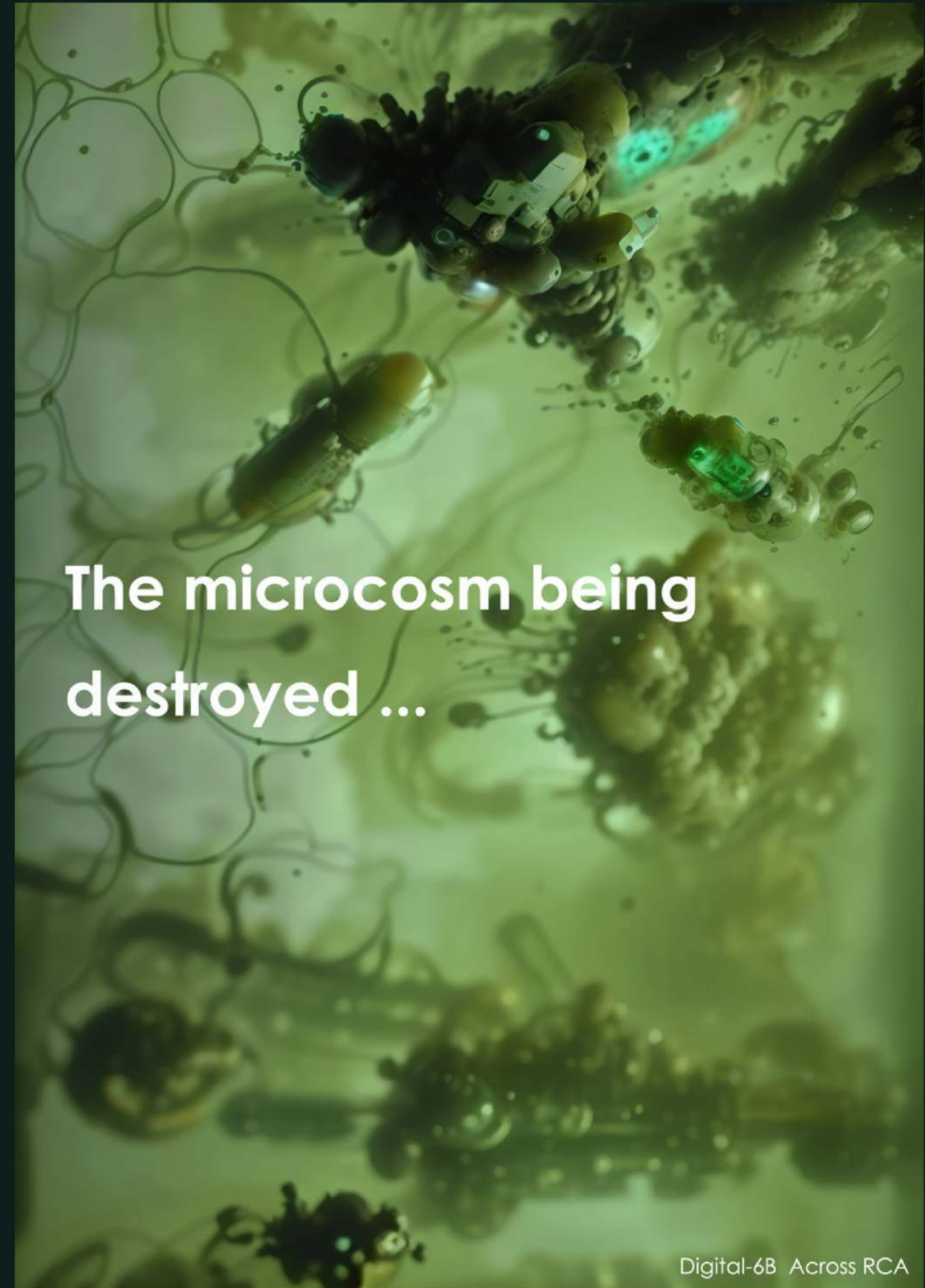


1x poster A1

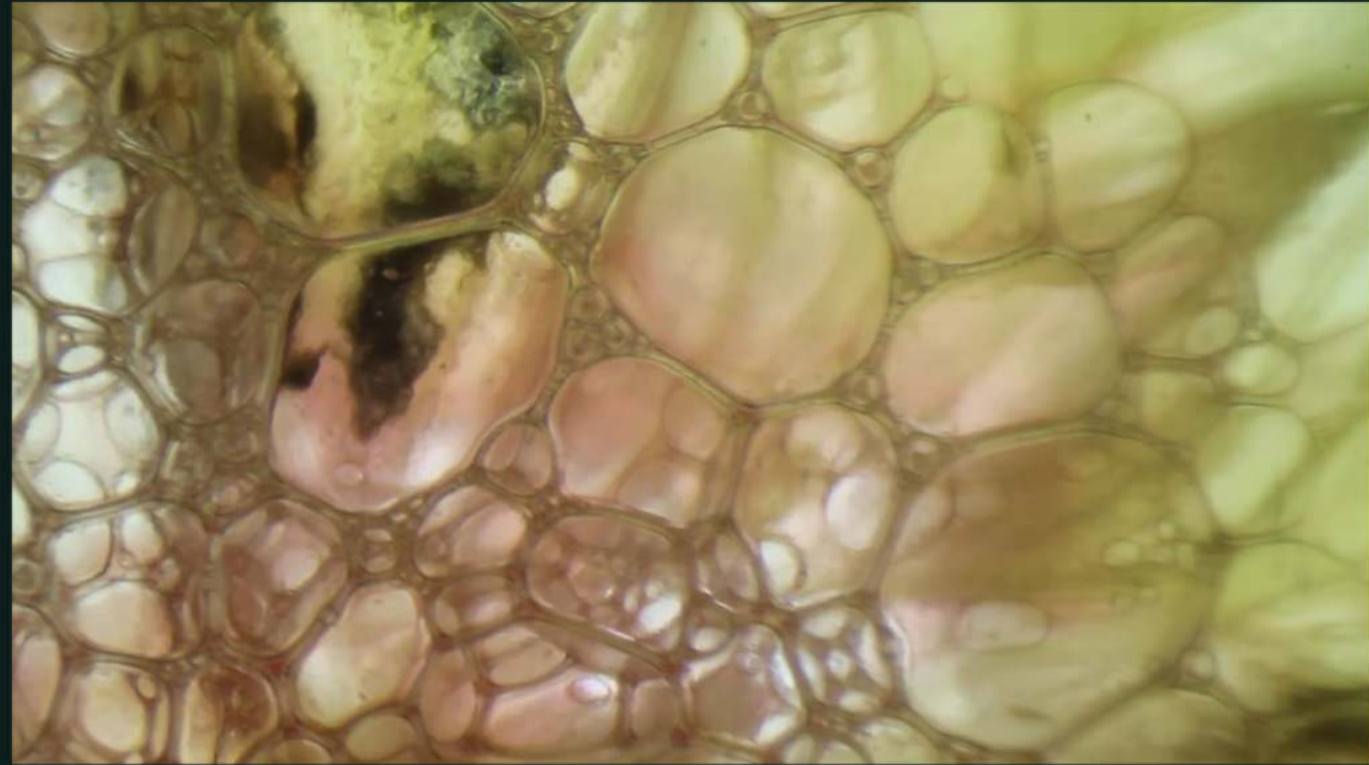




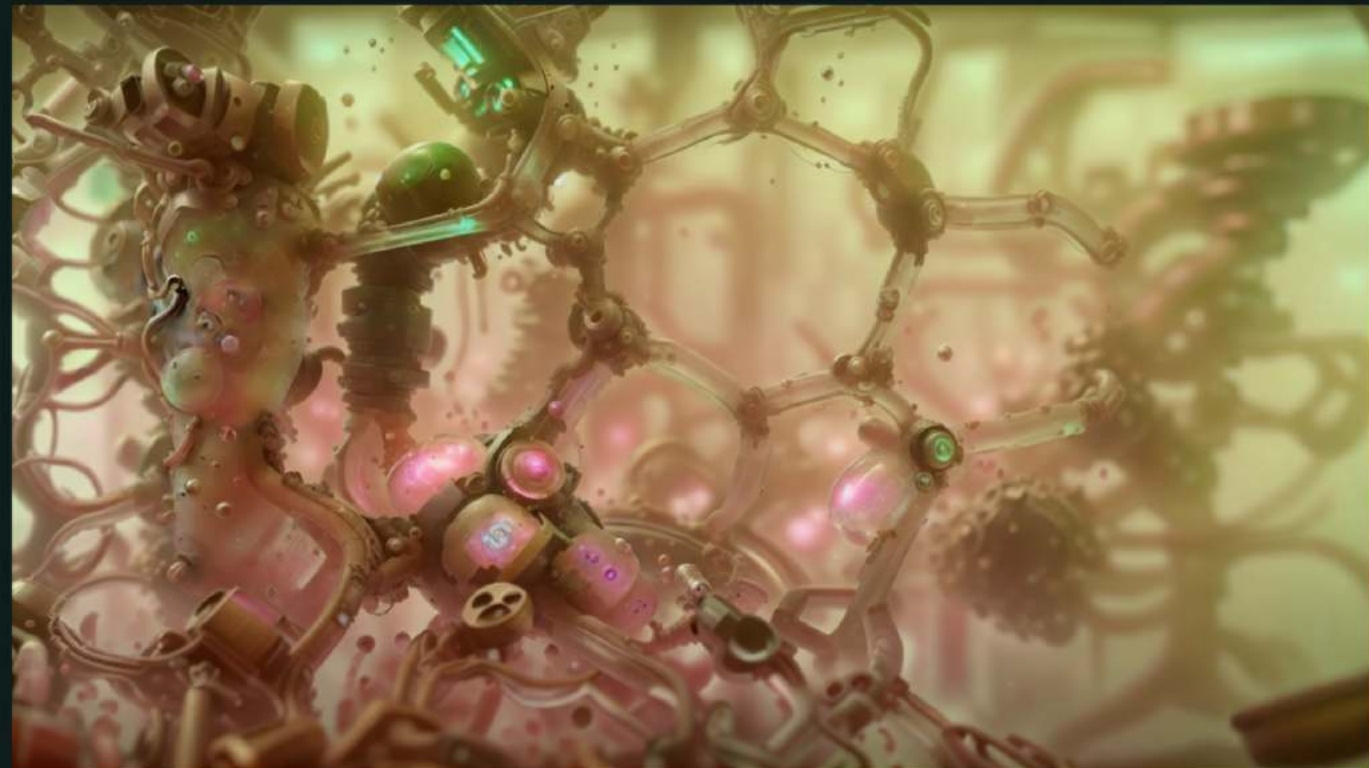
Destroyed cell by chemical reagent, <lora:CyberpunkWorld:1.3>
Steps: 20, Sampler: Euler a, CFG scale: 11.5, Seed: 1, Size: 1920x1080,
Model hash: fa1224c923, Model: icbinpICantBelievelts_seco, Denoising
strength: 0.2, Clip skip: 2, ENSD: 31337, Lora hashes: "CyberpunkWorld:
7be33eb2c197", Version: v1.3.2



**The microcosm being
destroyed ...**



Destroyed cell by chemical reagent, <lora:CyberpunkWorld:1.3>
Steps: 20, Sampler: DPM2 a, CFG scale: 11.5, Seed: 1, Size: 1920x1080,
Model hash: fa1224c923, Model: icbinpICantBelievelts_seco, Denoising
strength: 0.2, Clip skip: 2, ENSD: 31337, Lora hashes: "CyberpunkWorld:
7be33eb2c197", Version: v1.3.2



Our future in
the ecosystem

Digital-6B Across RCA



Destroyed cell by chemical reagent
Steps: 20, Sampler: Euler a, CFG scale: 11.5, Seed: 1, Size: 1080x1920,
Model hash: fa1224c923, Model: icbinpICantBelieveIts_seco, Denoising
strength: 0.5, Clip skip: 2, ENSD: 31337, Version: v1.3.2

A microscopic image of plant tissue, likely a cross-section of a stem or root. The image shows a large central cell with a prominent nucleus and nucleolus, surrounded by smaller cells. The cells are stained, showing various internal structures and colors. The overall appearance is that of a biological specimen under a microscope.

Video Demo

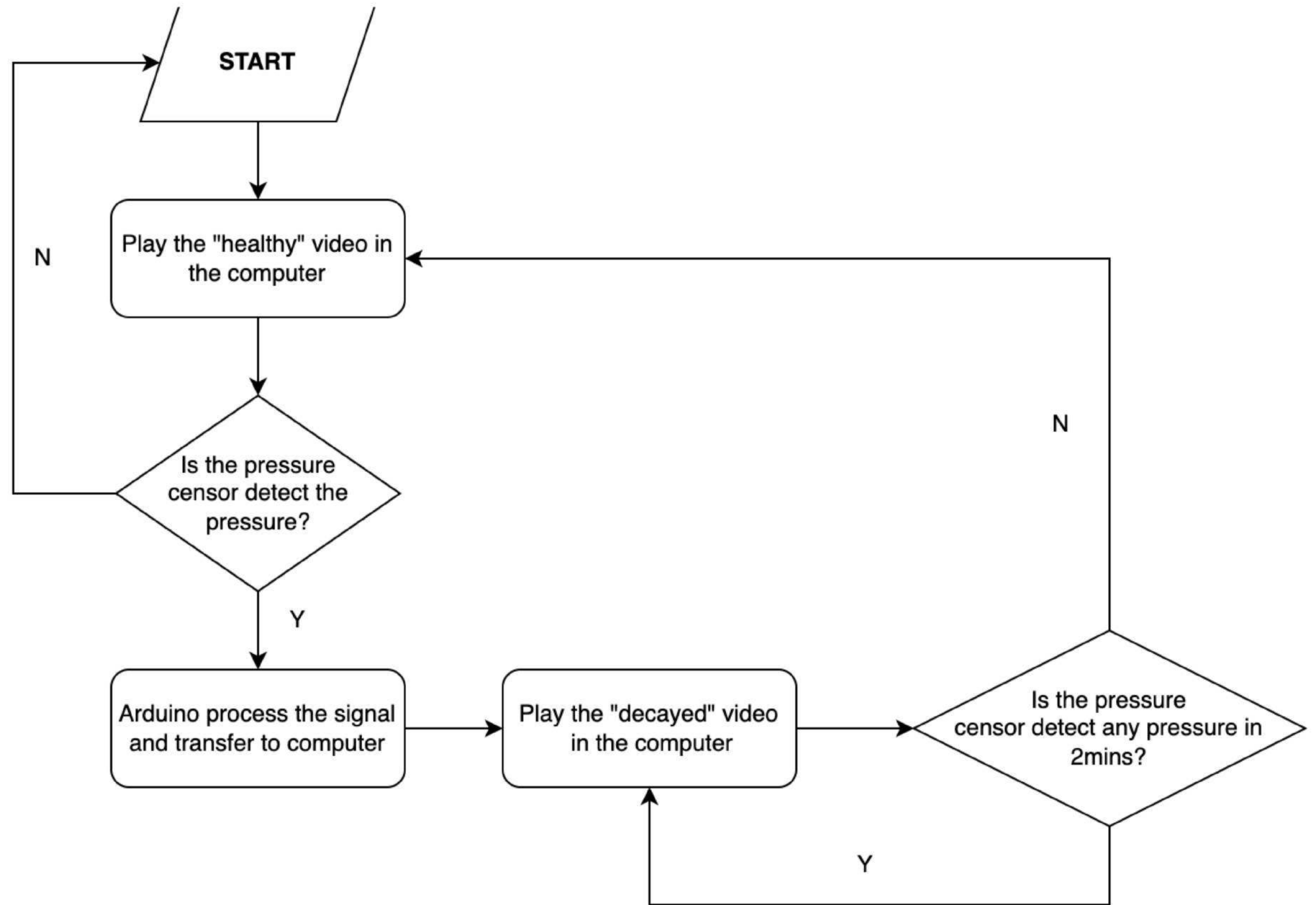


Technology

- Arduino, with pressure sensor;
- When the audience press the button in front of the screen, the “healthy” video will be switched to the “decayed” one;
- Arduino will process the signal and switch the video that playing on the computer;
- The video will return to the “healthy” one after 2mins

Demo of the code

```
5
6  Movie video1;
7  Movie video2;
8  boolean isVideo1Playing;
9
10 void setup() {
11     size(640, 480);
12     String portName = Serial.list()[0]; // 根据需要更改端口号
13     myPort = new Serial(this, portName, 9600);
14
15     video1 = new Movie(this, "video1.mp4");
16     video2 = new Movie(this, "video2.mp4");
17
18     isVideo1Playing = true;
19 }
20
21 void draw() {
22     if (myPort.available() > 0) {
23         buttonState = myPort.read() - '0'; // 将字符转换为整数
24         if (buttonState == 1) {
25             if (isVideo1Playing) {
26                 video1.play();
27                 video2.stop();
28                 isVideo1Playing = false;
29             } else {
30                 video1.stop();
31                 video2.play();
32                 isVideo1Playing = true;
33             }
34         }
35     }
36
37     if (isVideo1Playing) {
38         image(video1, 0, 0, width, height);
39     } else {
```



The background of the left half of the image is a dark, textured surface with vertical lines and small, colorful, glowing particles. The particles are primarily purple and blue, with some yellow and green. The overall effect is a sense of depth and movement, as if looking through a window or a screen.

Environment Setting



Scanned models of the surface texture of different tree species are first superimposed on each other in modelling software with negative shapes of tree cells, and then tiny touchable tree surface modules are printed.

What if we lose the trees?
How do we feel trees?



Decorations



Spiritless Trees 2100
1. 3D print



Combines geoscape, video and projection instruments live, attempts to explore the complex landscape where trees, topography, the anthropocene, ethics and cinema are intertwined in a geological ontology.

"Humans are the fundamental filler of the material, manifest world."

Trees as material, and trees as cinema, cells, traverse the boundaries between inside and outside, their scale shifting from individual cells to constitute the skin of the external boundaries of our bodies - from skin to the outer skin of hazmat suits, from bodies to walls, from indoors to outdoors, from the local to the global, and from the screen to the optic nerve.

Decorations

Generator: DEM Net Elevation API
Digital Elevation Model: FABDEM
Imagery: MapTiler CloudSat



Treescapemaking 2. 3D Scan



eluvium
Talk Amongst the Trees

Decorations

With Talk Amongst the Trees, Eluvium provides enough tension and variety. Throughout Talk Amongst the Trees, Cooper has it down when he aims for immersive warmth. Slightly darker tracks such as the quiet "Show Us Our Homes", with its anxious, distorted whine, retain a sense of relaxed contemplation.

The 10-minute opener "New Animals from the Air"-- with its billowy mass of backward guitar seeded with overdriven guitar patterns-- is the sort of thick sonic blanket that Windy & Carl used to tuck us under. In a similar vein, "Calm of the Light Cloud" fills available space with layers of glowing harmonics.

The boost is provided by a sense of cinematic grandeur. The 17-minute "Taken" is built from a series of strummed guitar chords, "Taken" becomes almost heroic. It's a big effect on an album consisting mostly of smaller, quieter ones.

Talk Amongst the Trees
3. Music



Future plan

Progress Check - Every week
Curating and Exhibition Planning
(Poster, Deco, etc.)
Video Editing
Brochure Revamping

Thank you