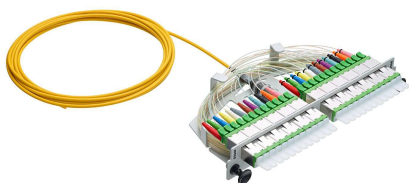


**Patch insert**

The Patch insert is a modular snap in solution for the several ODF-MODULE and other R&Mfoxs platforms. The Patch insert has been specifically designed to setup an optical network infrastructure. The Patch insert is used for splice solution in combination with the CombiMODULE or as a breakout solution in combination with the PatchMODULE.

**Technical data**

Criteria	Date / value	
Patch insert	Material	Steel 1.5 mm, powder coated
	Color	Light gray/RAL 7035
Patch insert	Weight net	0.4 kg
	Weight packed	0.6 kg
System pigtail fiber	Standard	G.652.D
Packaging size	H x W x D (mm)	50 x 225 x 195 (mm)

**Standards**

Standard	Description
IEC 61300-2-1, IEC 61300-2-9	Vibration- and shock testing operation conditions
IEC 60068-2-64, IEC 60068-2-7	Vibration- and shock testing transport
EN 60529	Housing protection
IEC 60068-2-2, IEC 60068-2-1	Climate testing
IEC 61300-2-22, IEC 61300-2-19	Change of temperature and damp heat

**Mechanical characteristics**

Criteria	Date / value
High stability and resistance	Steel construction

**Environmental characteristics**

Criteria	Date / value
Operation temperature	-25°C up to +70°C
Transport and store temperature	-40°C up to +85°C

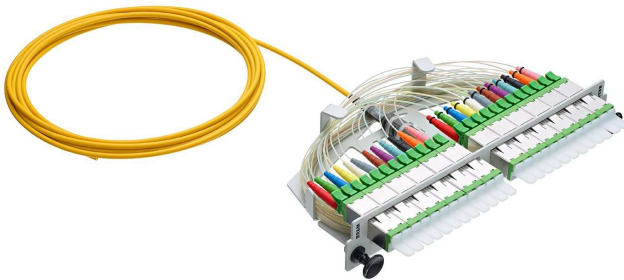
### Assembling variants

Patch insert	Description	Variant
Adapter type	numbers of system pigtail/fibers	splice-patch/breakout
12 x LC duplex	1/24	yes/yes
24 x LC duplex	2/48 (2x24)	yes/no
24 x SC simplex	1/24	yes/yes
12 x LSHRJ	1/24	yes/yes

<b>Mounting possibility</b>
CombiMODULE-ODF, PatchMODULE-ODF, Venus-FXXL, Street cabinet HD-CCC

### Patch insert variant

Patch insert splice-patch solution



Patch insert breakout solution

